

# MAST30SOEX

MASTER SERIES  
30" CONVECTION SPEED OVEN



Bring Italian design and precision into your kitchen with the Bertazzoni speed oven, engineered to install proud or flush in any type of kitchen cabinet.

Enjoy the flexibility of baking, broiling and microwaving in a single oven. Use each cooking mode independently or in combination for amazing results.

Prepare meals in up to half the time with the convection microwave mode, without compromising quality, aroma and taste.

Manage cooking modes, temperature and time with the highly intuitive touch-through-glass user interface.

Enjoy the convenience of soft-motion balanced doors and no-fingerprint stainless steel.

Designed with pride by Bertazzoni in Italy.

Industry leading 2 years parts and labor warranty.

## PRODUCT FEATURES

|                               |  |
|-------------------------------|--|
| Oven type                     | Combination electric convection and broiler with microwave                                   |
| Power rating (Rating at 240V) | Broiler: 1500 W<br>Convection: 1600 W  |
| Microwave power rating        | 1000 W   |
| Microwave power levels        | 200/400/600/800/1000   |
| Oven Volume                   | 1.34 cu.ft.  |
| Convection System             | 1 Fan  |
| User interface                | Touch LED display  |
| Auto cooking modes            | Yes  |
| Cooking modes                 | Broil, Convection, Convection broil, Convection microwave, Microwave, Microwave broil, Pizza |
| Special features              | Defrost by time, Defrost by weight, Light, Popcorn, Recipes, Timer                           |
| Shelf levels                  | 2  |
| Door hinges                   | Soft-motion  |
| Included accessories          | 1 glass turntable + 1 roasting trivet  |

## TECHNICAL SPECIFICATIONS

|                                 |  |
|---------------------------------|--|
| Electrical supply               | 240 V 60 HZ - 3850 W<br>16 Amp dedicated circuit |
| Power connection                | Metal conduit with 71" power cord                |
| Certification                   | CETLUS   |
| Warranty                        | 2 years parts & labor                            |
| Packaging dimensions and weight | W 33 1/2"<br>H 21 5/8"<br>D 26 3/8"<br>100.3 lbs |

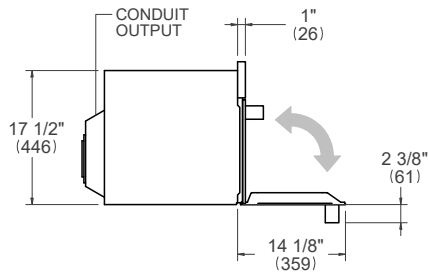
# MAST30SOEX

MASTER SERIES  
30" CONVECTION SPEED OVEN

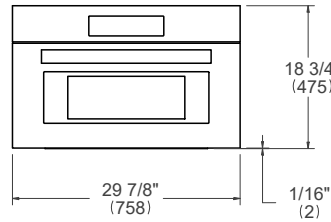


## PRODUCT DIMENSIONS

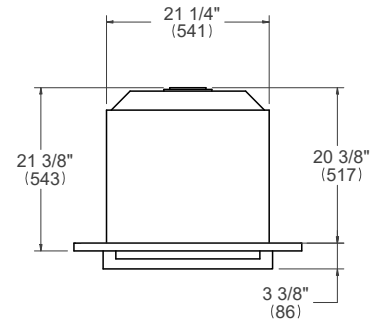
SIDE VIEW



FRONT VIEW

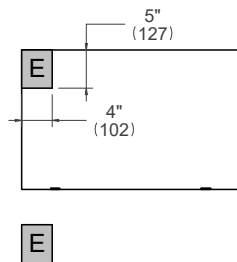


TOP VIEW



## ELECTRICAL CONNECTION

FRONT VIEW



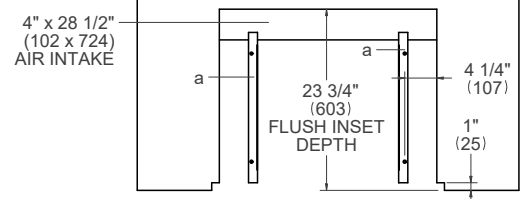
For single ovens installed into a wall cabinet, the electrical junction box may be located above, below to the left or right of the unit within reach of the power cord. Placement within the opening may require additional cabinet depth.

## INSTALLATION REQUIREMENTS

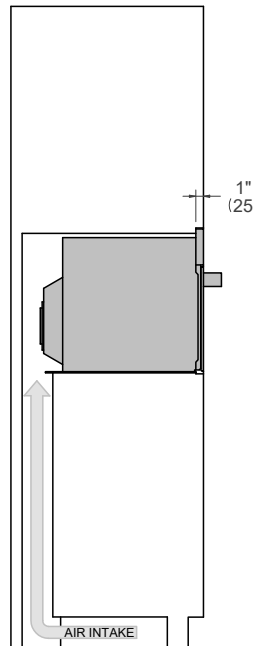
Minimum suggested load on cabinet base board is 110 lb (50 kg)

## CUTOUT DIMENSIONS

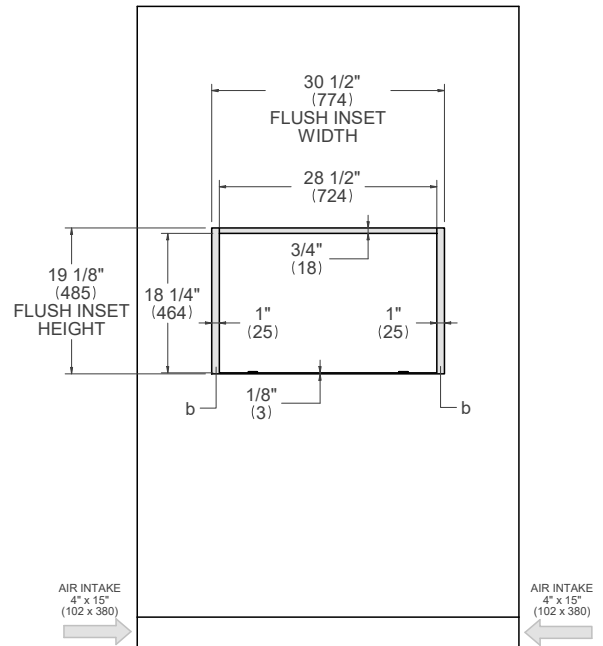
TOP VIEW



SIDE VIEW



FRONT VIEW



- (a) Spacers – Included with appliance
- (b) Visible Area – Match finish to outside cabinet panels

For installation of multiple products in combination, refer to the Design Guide at [us.bertazzoni.com](http://us.bertazzoni.com) or [ca.bertazzoni.com](http://ca.bertazzoni.com)