

INOVAAIR®

AirClean V20

Air Purifier



AirClean V20 Healthcare User Manual

Contents

| | |
|--|----|
| Important Safety Instructions | 3 |
| Introducing your InovaAir® AirClean system | 4 |
| How your AirClean system works | 5 |
| Positioning your AirClean system | 5 |
| System operation | 6 |
| Getting the most out of your AirClean system | 7 |
| Accessing the filters | 8 |
| When to replace the filters | 9 |
| Replacing filters | 10 |
| Ordering new filters | 10 |
| System warranty | 11 |



Important safety instructions

Please read these instructions before operating the InovaAir® System and keep for future reference.

To reduce the risk of fire, electric shock, or injury

1. Do not detach motor-outlet module until the system has been switched off.
2. Disconnect power, or unplug, before cleaning, performing any maintenance or replacing a filter.
3. Use caution when moving the air purifier to avoid injury. We advise removing the filters prior to lifting or transporting the system.
4. Do not operate unless all components are fully assembled, securely latched and in the upright position. Failure to do so may result in serious injury.
5. Leave a distance of at least 100mm between the appliance and the nearest wall to allow for adequate air circulation.
6. Always keep air intake and outlet of the unit unobstructed.
7. Do not use near water or moisture or the immediate surroundings of a bath, shower, or swimming pool.
8. Do not immerse the air purifier in water or any other liquid.
9. Do not let objects, or liquid, enter the product.
10. Do not handle any part of the appliance or plug with wet hands.
11. Do not install near any heat sources.
12. Do not operate this appliance if it has a damaged cord or plug, is not working correctly, or has been dropped.
13. Do not use this appliance if it has been damaged or submerged in water.
14. The appliance is not to be used by persons (including children) with reduced physical, sensory, or mental capabilities, or lack of experience and knowledge, unless they have been given supervision or instruction.
15. If the supply cord is damaged, it must be replaced with a new cord. Contact our support team for a replacement.
16. Keep power cord away from heated surfaces.
17. Refer all servicing to qualified InovaAir® service personal. Servicing is required when the product has been damaged in any way. Do not attempt to service this product yourself. Opening or removing covers may expose you to dangerous voltages or other hazards and may void warranty.
18. Unplug the air purifier during lightning storms or when unused for long periods.
19. Do not use this appliance as sole protection against harmful pollutants.
20. Do not use outdoors.
21. Keep the appliance away from flammable liquids, vapours, air fresheners and essential oils.
22. Do not use in explosive or flammable environments.
23. Use only on solid, horizontal, and stable surfaces.
24. Do not operate in high temperatures over 40°C

Introducing your InovaAir® AirClean system

Inside the V20 box, you will find the InovaAir® unit consisting:

- V20 System Case/Motor
- Filter Base Plate (detachable)
- Power Cable (located in base of box)
- V20 Pre-filter (pre-installed)
- V20 HEPA Filter (pre-installed)



Technostat™ high efficiency pre-filter.

Certified Medical-grade HEPA filter
99.97% @
0.3 microns
efficiency.

How your AirClean system works



A Air is drawn into the system through the sides of the unit.

B Air passes through the fine dust pre-filter.

C Air passes through the H13 HEPA filter which removes dust, allergens and sub-micron fine particle matter.

D The purified air is then returned to the room via the high air-flow diffuser.

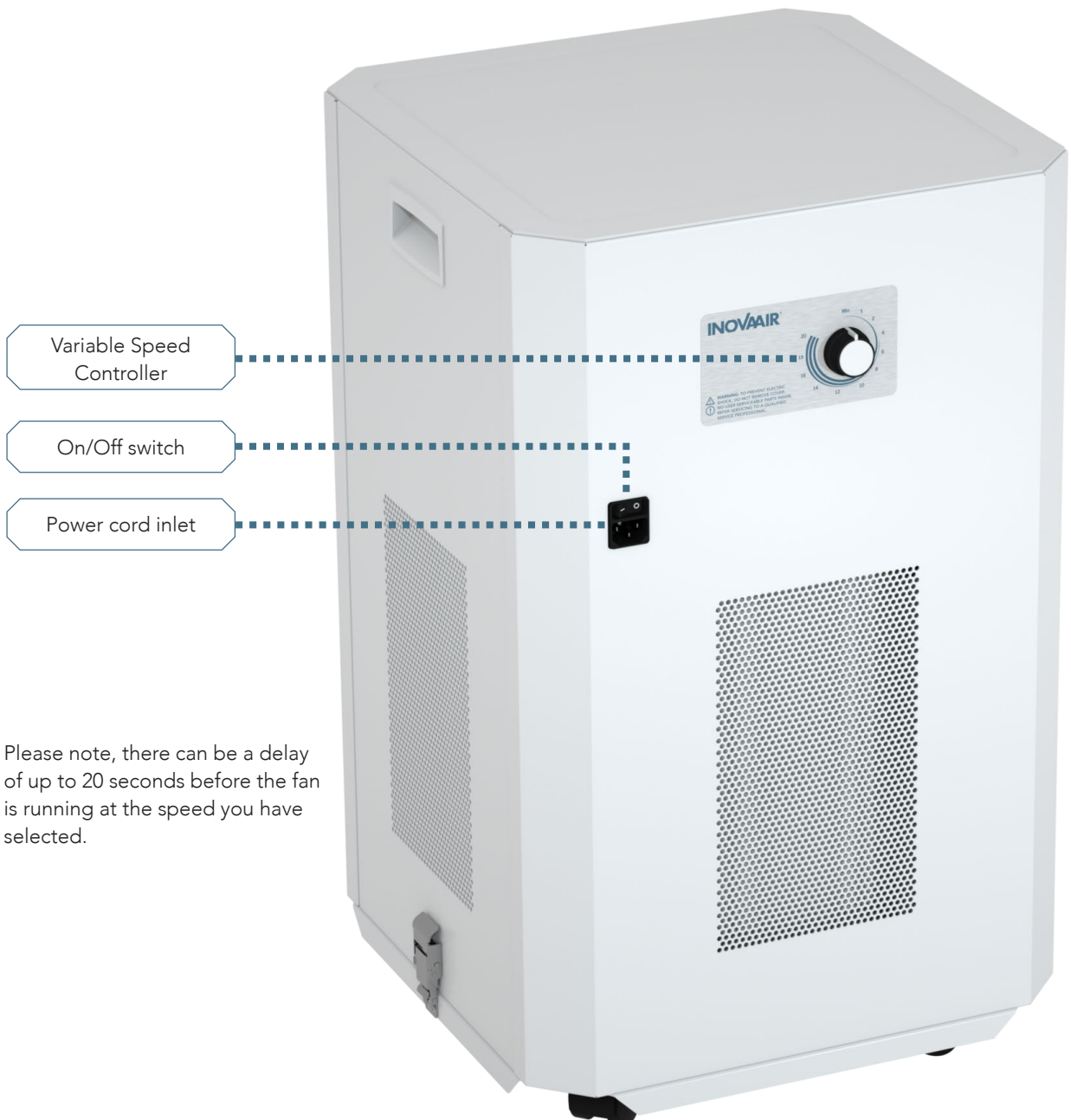
System operation

Speed Control

The system has a variable speed controller and uses an energy efficient European AC fan. Power consumption is relative to the selected speed.

| | | | | | | | | | | | |
|-----|-----|-----|-----|-----|-----|-----|-----|-----|-----|-----|--------------------------------|
| Min | 2 | 4 | 6 | 8 | 10 | 12 | 14 | 16 | 18 | 20 | Control position |
| 6 | 8 | 10 | 14 | 20 | 29 | 40 | 48 | 68 | 82 | 84 | Power Consumption (Watts) |
| 100 | 155 | 210 | 265 | 320 | 375 | 430 | 485 | 540 | 595 | 650 | Airflow (m ³ /hour) |

The higher the speed, the more times per hour the air in your living space will be cleaned, so it is recommended to run the system at the highest speed you are comfortable with. Higher fan speeds will generate higher sound levels.



Please note, there can be a delay of up to 20 seconds before the fan is running at the speed you have selected.

Getting the most out of your AirClean system

Operate the system 24/7.

As contaminants are always present in the air, for maximum effectiveness you should operate the system continuously. By switching the system off you are only allowing these contaminants to build up in the interim until it is switched back on. InovaAir systems are designed for optimal energy efficiency.

Enclose the area where you are operating the system.

Closing doors will allow the system will be much more effective as it will only be filtering air in the one room.

Operate at the highest speed practical

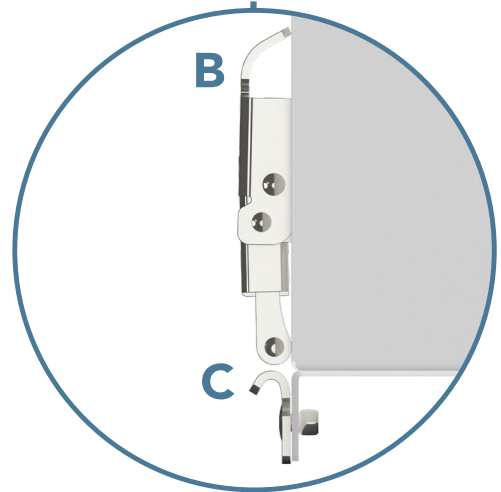
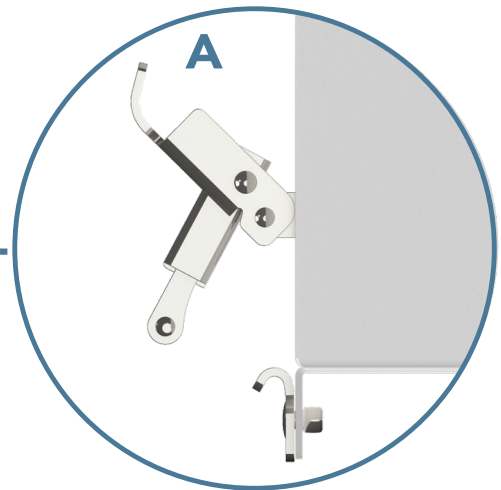
All InovaAir systems include variable speed controls and the speed should be varied depending on the room size, the level of air pollutants present, and the specific application. The higher the operating speed the more effective the system will be in reducing contaminants in the air.



Accessing the filters



1. Disconnect the power cord.
2. Ensure system is sitting on a flat and even surface.
3. Pull top of the latches (A) away from the main unit.
4. Push the latches back towards the main unit (B)
5. Ensure the latch clasps are clear of catches on the base (C).
6. Lift casing clear of base to access filters.



Recommended filter replacement intervals

| FILTER NAME | APPROXIMATE REPLACEMENT INTERVAL* |
|--------------------------|--|
| Pre-Filter (Wrap-around) | 3-6 months (continuous use) |
| H13 HEPA Filter | 3 years (continuous use) |

Filter life will vary based on levels of dust present and system proximity to major pollution sources each of which may lower any of the filter lifespans. InovaAir does not warranty consumable filter life.

When to replace the filters



Stage 1: Pre-filter

The pre-filter is the initial stage of filtration, filtering large dust particles right down to ultra-fine sub-micron particles as well as viruses and bacteria. It is made from a patented material used in respirators and face masks.

Dust levels in the ambient air will affect how long the pre-filter will last.

Pre-filters are white and will turn grey within 1-2 weeks of use, this is nothing to be concerned about and simply means the filter is doing its job.

In clinical settings, depending on the application and level of exposure to contaminants, the pre-filter should be replaced every 1-3 months.

Stage 2: Medical-grade HEPA filter

The H13 HEPA filter is designed to last 3 years under normal use. As with other filters, the environment in which it is used will determine the filter life.

The outside of the HEPA filter will change colour and turn dark grey when it needs replacing. Generally for the first two years of use, the filter will remain white and then gradually get darker in the final months of its life. Please note, the inside of the HEPA filter will always remain white so it is important to check the outside of the filter which is visible when the pre-filter is being changed.

When changing filters

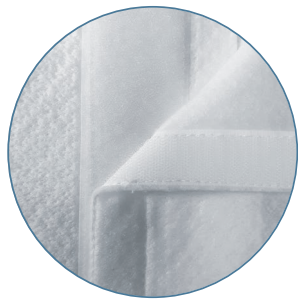
Turn off and unplug the system before unlatching system housing.

To reduce the risk of infection please follow your organisation's personal protective equipment (PPE) guidelines. This may include protective clothing, gloves, a mask or a respirator as the used filters may be extremely dirty, dusty or considered a biohazard if there has been any exposure to infection.

Remove filter and place in a large, sealable bag. Seal the bag closed. Discard the bagged filter in an outdoor waste container or contaminated waste receptacle if available.

Important: Do not attempt to vacuum the HEPA or Pre-filter as this will damage the fine filter fibres and reduce efficiency. Air intake vents on the sides of the system can be vacuumed with a HEPA grade vacuum, including the base plate which sits under the filters.

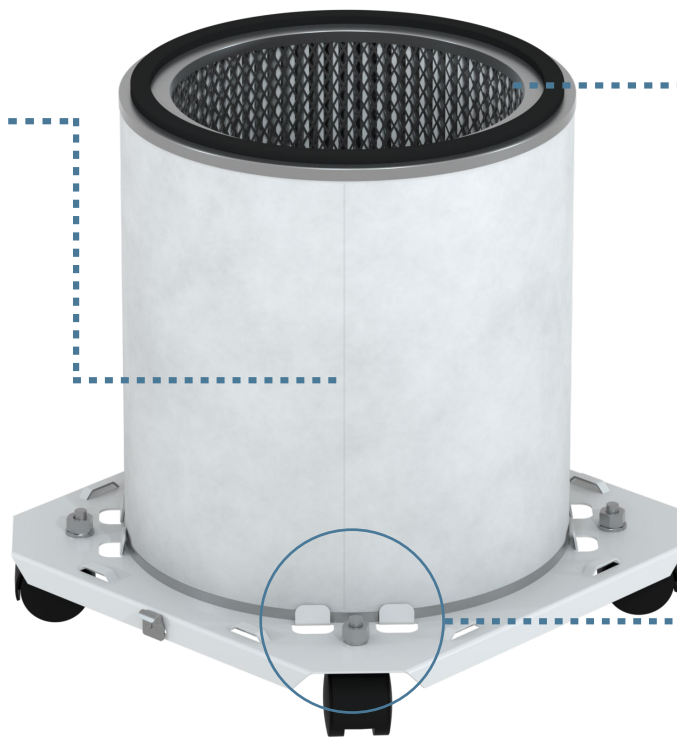
Replacing filters



The pre-filter is wrapped around the HEPA filter & fastened with Velcro.

Gently unwrap from the filter & replace with a new pre-filter.

Ensure pre-filter is installed so the 'fluffy' Velcro strip is facing outwards and is firmly fitted around the HEPA filter to avoid air bypassing the pre-filter.



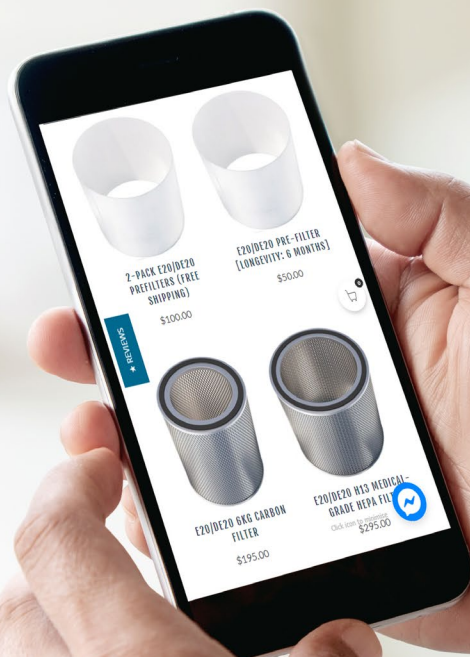
The HEPA filter can be lifted from the base and replaced when required.

Ensure the filter is positioned within the locators and sitting flat on the base.

Ordering new filters

Replacement filters can be ordered from the InovaAir website using the URL or QR code below.

www.inovairpurifiers.com.au/replacement-filters



Definitions

In this warranty:

“ACL” refers to the Australian Consumer Law. “Back to Base” means where delivery to and collection of your product from the Service Agent is your responsibility.

“Consumable” includes (without limitation) filters and pre-filters. “InovaAir® Australia” means InovaAir® Australia Pty Ltd ACN 103 549 435. “Factory Second” means a Product sold by InovaAir® Australia or any other authorised person as a ‘second’ meaning a product with a small imperfection that does not impede functioning. “Genuine” means manufactured by or on behalf of InovaAir® Australia. “Product” means a Genuine Product supplied new by InovaAir® Australia. “Purchase Date” means the date of first purchase from InovaAir® Australia or any other authorised person seller or distributor. “Any other authorised person” means a dealer, reseller or retailer of the Product. “Service Agent” means an authorized InovaAir® Australia service agent. “You” means the End User and “your” has a corresponding meaning.

Introduction

Subject to these conditions, InovaAir® Australia Pty Ltd offers this Warranty on a Product to which it's Back to Base service applies.

(1) This Warranty applies in addition to the conditions and warranties implied by the Act in relation to a Product.

(2) Any other authorized person who has sold a Product to you has acted as principal and has no authority to give any additional warranty or guarantee in relation to the Product on behalf of InovaAir® Australia.

(3) InovaAir® Australia will not be liable for any consequential loss, indirect or special damage arising from your use of the Product. In particular (but without limitation) InovaAir® Australia excludes any liability for actual or expected revenue loss or other loss.

NB. This exclusion is subject to any relevant Commonwealth or state law, which is intended to override such exclusions.

(4) In no event shall InovaAir® Australia, its agents, employees, or distributors be liable for special, incidental, consequential, or indirect damages.

(5) The provisions of this warranty supersede and are in lieu of any other warranty, whether express or implied, written or oral, including any warranty of merchantability or fitness for a particular purpose.

NB. This exclusion is subject to any relevant Commonwealth or state law, which is intended to override such exclusions.

(6) Maximum liability shall not exceed the actual purchase price paid for this product.

(7) This warranty is non-transferable.

(8) Should any of the conditions of the warranty be deemed unenforceable then same shall be severable from the balance of warranty conditions, which shall remain legally binding.

5 Year warranty

InovaAir® Australia warrants that your Product will be free from defects in materials or workmanship for five (5) year/s from your Purchase Date. Two (2) years in commercial applications).

At its discretion, InovaAir® Australia will repair or replace your Product, if it is found be defective. InovaAir® Australia will, if it deems the unit defective, either repair or replace the unit at its sole option (and, based on availability, may elect to replace the unit with an air purifier of similar function or value).

To make a Warranty claim, you must:

- First call InovaAir® Australia's Contact Centre on 1 300 137 244;
- Return the Product (if warranty service is required) in its original packaging (or suitable alternative) to a Service Agent, as discussed with the Contact Centre; and
- Provide a copy of your purchase receipt, to show that this Warranty applies to your Product at the date of your claim.

You are responsible for the cost of and risk in delivery of your Product to and its collection from the Service Agent.

Warranty application

This Warranty applies only:

- To a Product that is supplied new to You by InovaAir® Australia or by any other authorized person;
- If you use the Product for your own private or business purposes; and
- You have not bought the Product for resale.

Warranty exclusions

This Warranty will not apply if during the warranty period:

- A Product's serial number or any rating label is removed or changed in any way; This warranty shall immediately become void if the unit's serial number label is removed, altered, or is no longer clearly legible;
- A Product is repaired other than by a Service Agent;
- You use a Product contrary to any technical or operating environment or safety guidelines recommended in its user guide or manual;
- No fault found service calls where the perceived problem is explained within the Operating Manual or the trouble shooting section of the operating manual.
- This Warranty does not cover costs associated with delivery, handling, freighting or damage to product in transit.
- This Warranty does not apply to a Product's malfunction or failure resulting from:
 - Deliberate or accidental damage;
 - Rust or damage to paintwork, varnishes or seals caused by a corrosive atmosphere;
 - Vermin infestation;
 - Any modification by the purchaser which affects the reliability or performance of the unit, not attributable to faulty manufacture, parts and labour;
 - Where a unit is installed incorrectly by the purchaser or its servants agents employees or by unqualified persons;
 - Failure is due to improper installation or faulty installation;
 - Failure is due to improper maintenance by customer (refer to maintenance section of Operating Instructions);
 - Misuse, abuse or neglect;
 - Incorrect voltage or a power surge; or
 - Your use of any non-genuine Consumables parts accessories or interfacing;
 - Failure to remove or replace out of date or non-functioning filter.
- This warranty covers only manufacturing defects, and not normal wear and tear, including filters which are considered consumables.
- InovaAir® does not warrant the Product as a health safety device. The product is not a Medical Device or Therapeutic Device as defined by the Therapeutic Goods Act 1989.
- All exclusions as determined by InovaAir® Australia at its sole discretion.
- Filter life: InovaAir® does not warrant the useful life of filter consumables. The filter consumables working life will depend entirely on the environments in which it is used. In dusty environments filter life will be reduced. The Products and their filters are not intended to be used for dust extraction in industrial or commercial applications.

Non-genuine items

InovaAir® Australia advises that if you use non-Genuine Consumables, replacement parts or accessories, you may damage your Product and may void your warranty.

Australian Consumer Law

In addition to your rights under the InovaAir® guarantee, we also provide the following statement as required by the Australian Consumer Law: In Australia, your InovaAir® appliance comes with statutory guarantees that cannot be excluded under the Australian Consumer Law. You are entitled to a replacement or refund for a major failure and for compensation for any other reasonably foreseeable loss or damage. You are also entitled to have your InovaAir® appliance repaired or replaced if it fails to be of acceptable quality and the failure does not amount to a major failure.

AirClean V20

Air Purifier

INOVAAIR®



InovaAir Australia Pty Ltd
Unit 8, 1 Reliance Drive,
Tuggerah, NSW 2259 Australia

TEL: 1300 137 244

www.airclean.com.au