

PLEASE READ AND RETAIN THIS IMPORTANT INFORMATION FOR FUTURE USE.



Light & Sound Sleep Aid with Cry Sensor Technology

All sounds have an auto shut off after 30 minutes and enter Cry Sensor mode.

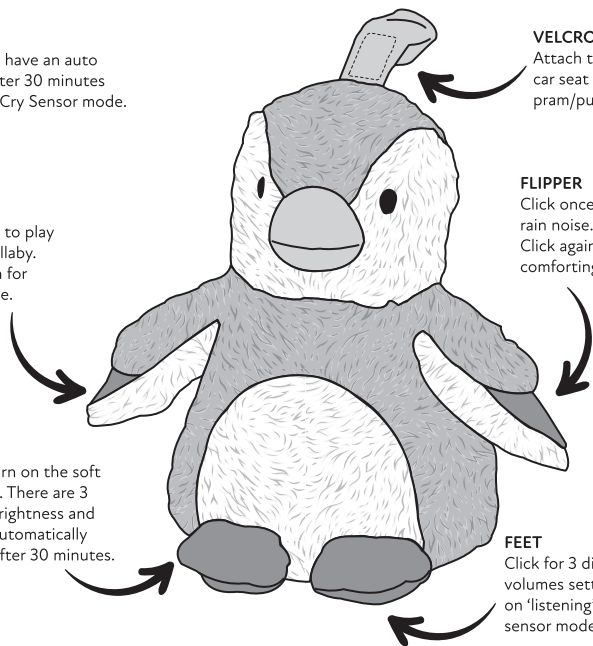
FLIPPER
Click once to play Brahms' lullaby. Click again for white noise.

FEET
Click to turn on the soft night light. There are 3 levels of brightness and the light automatically turns off after 30 minutes.

VELCRO LOOP
Attach to a cot, car seat or pram/pushchair.

FLIPPER
Click once for rain noise. Click again for comforting heartbeat.

FEET
Click for 3 different volumes settings or leave on 'listening' when in cry sensor mode.



To manually start the cry sensor mode, choose the sound you want to soothe your baby if they wake up then click the relevant flipper for 2 seconds. Cry Sensor will then be active for 3 hours. If no sound is detected in that time the unit will enter sleep mode.

START YOUR SLEEP AID

Your Penguin Cry Sensor Sleep Aid will come with the master power switch on the battery compartment in the off position. Insert 2 x AA 1.5v batteries. Open up the velcro fastening at the back and open up the battery compartment using a screwdriver in the correct orientation (see below) and close the compartment ensuring the screw is tightened. Slide the switch to the ON position and close the Velcro.

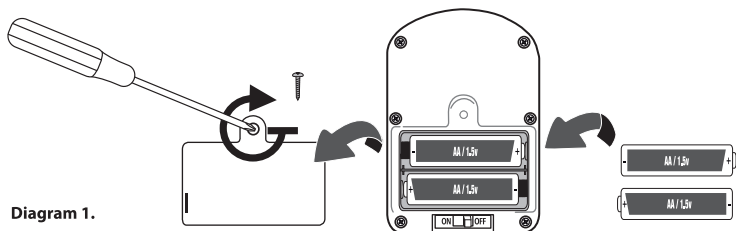


Diagram 1.

THE CRY SENSOR

The Cry Sensor works by listening out for noise and will automatically activate when it hears baby's cry or any sharp sounds which may disturb them.

HOW TO ACTIVATE

Press the right flipper and Brahms' lullaby will start to play. If you want the white noise then press the flipper again. The left flipper plays a rain noise or press again for a gentle heart beat. All the sounds come on using the lowest volume setting. You can then leave your choice playing for 30 minutes and it will automatically switch off and go into Cry Sensor listening mode. If it hears your little one it will activate on the last sound played for 30 minutes and will then enter the Cry Sensor listening mode again. This will continue if, within the three hours, it is activated.

If the Cry Sensor mode isn't activated for over 3 hours then the Cry Sensor will automatically switch off. You can also activate the Cry Sensor listening mode manually. When you have your chosen sound click and hold the flipper for 2 seconds and the Cry Sensor listening mode will be activated.

WARNING: KEEP AWAY FROM FIRE

Do not expose to extreme heat. Read the instructions before use. Soft toys should not be left in a baby's cot or crib. Please remove from a sleeping baby. Use under adult supervision.

REPLACING BATTERIES

The Cry Sensor Sleep Aid takes 2 x AA batteries. To replace the batteries, unscrew the battery cover on the side of the unit. Insert 2 x AA batteries ensuring that the polarity is in the correct position (see **diagram 1**).

BATTERIES NOT INCLUDED – TAKES 2 x AA 1.5V.

Do not mix old and new batteries or batteries of different types.
Do not mix alkaline, standard (carbon-zinc), or rechargeable (nickel-cadmium, lithium-ion) batteries.
Do not charge non-rechargeable batteries.
Insert batteries in the correct polarity position as indicated inside the battery compartment.
Never short circuit battery terminals.
Use only batteries of the same or equivalent type as recommended.
Remove batteries during long periods of non-use. Always remove exhausted batteries from product.
Dispose of batteries safely and properly.
Do not dispose of product in a fire. The batteries inside may exploded or leak.
Rechargeable batteries are to be removed before being charged.
Rechargeable batteries are only to be charged under adult supervision.
Do not submerge in water or other liquids.

IMPORTANT:

Always remember about your child's safety! Remember to check all parts of the product before using to detect any deficiencies or a potential danger for your child's safety and health.

ENVIRONMENTAL PROTECTION

Waste electrical products should not be disposed of with house hold waste. Please recycle where facilities exist. Check with your local authority for recycling advice.

PACKAGING MATERIALS:

Remove all packaging materials before use.

CARE INSTRUCTIONS: Wipe clean only. Air dry. Do not submerge in water or any other liquid. Do not bleach. Do not tumble dry. Do not iron. Do not dry clean.



© 2022 Luv n' care. Nuby TM and Nuby logo licensed to Luv n' care by Admar International
Product Design and all other TMs owned by or licensed to Luv n' care



DC PHARM Calle Filadofes, S/N - NAVE 3
Olesa de Montserrat,
08640 Barcelona, SPAIN



Form CWY_UK: 99839

Nuby UK LLP
13 Burford Way
Baldon Business Park
Baldon Colliery
Newcastle upon Tyne
NE35 9PZ
Freephone number:
0800 334 5844
enquiries@nuby-uk.com
www.nuby-uk.com
www.nuby.com
Made in China