

Nuby™

Digital Breast Pump



Instructions

Table of contents

Intended Use	1
Important Safety Information	3
Technical Data	3
Product Description	4
Preparing the Pump	5
Expression	6
Storing Breastmilk	7
Cleaning	8
Troubleshooting	9
Bottle & Teat Instructions	10
Guarantee	10

Key Features:

Easy to use and assemble, simple one-touch operation and digital display screen

Piston pump system, which mimics baby's natural sucking rhythm

2 Phased expression, stimulation to encourage milk let-down and expression

Expression suction and speed controls are separate, giving you a choice of 25 different combinations for control and comfort

Quiet design for discreet pumping

Closed system that help prevents the milk back-flowing into the air tube

Powered by A/C mains adaptor

Intended Use:

Expressing breastmilk to feed immediately or to store for later.

Relieving engorged breasts, a painful condition where the breast are overfull, which can possibly prevent a baby latching on easily to the breast.

BOTTLE & TEAT

For your child's safety and health **WARNING!**

- Continuous and prolonged sucking of fluids will cause decay.
- Always check food temperatures before feeding.
- Throw away at the first signs of damage or weakness.
- Keep components not in use out of the reach of children.
- Never attach to cords, ribbons, laces or loose parts of clothing. The child can be strangled.

Always use this product with adult supervision. Accidents have occurred when babies have been left alone with drinking equipment due to the baby falling or the product has become disassembled. Never use feeding teats as a soother. Tooth decay in young children can occur even when non-sweetened fluids are used. This can occur if the baby is allowed to use the bottle for long periods through the day and night, when saliva flow is reduced or if it is used as a soother. Heating in a microwave oven may produce localised high temperatures. Take extra care when microwave heating. Always stir heated food to ensure heat distribution and test the temperature before serving. When making up a feed, follow the formula milk manufacturer's instructions and allow the freshly boiled water to cool before pouring it into the bottle.

CLEANING

Before first use, clean the product. Before first use, disassemble and clean the product and then place the components in boiling water for 5 min. This is to ensure hygiene. Clean before each use. Always wash the product immediately after use. Before each subsequent use clean carefully to ensure hygiene. Wash in warm soapy water and rinse in clean water or use a dishwasher. Do not clean with solvents or harsh chemicals. Do not allow product to come into contact with oil based foods (e.g. oil/tomato based sauces) as staining will occur. Do not turn the teat inside out for cleaning. Damage could result. Use a teat brush. Suitable for all forms of sterilisation.

STORAGE & USE

Inspect before each use and pull the teat in all directions. Throw away at first signs of damage or weakness. Do not store in direct sunlight or near a source of heat. Do not store with or allow to come into contact with solvents or harsh chemicals. Not suitable for use in a conventional oven or a combination microwave oven with the grill feature switched on. Keep all components not in use out of reach with children. Do not leave a feeding teat in direct sunlight or heat, or leave in disinfectant (sterilising solution) for more than recommended, as this may weaken the teat. For safety and hygiene reasons it is recommended that the feeding teat is replaced at least 2 months. Do not heat in a microwave with the bottle sealed. Remove the teat, locking ring and dome. Bottle and teat complies with EN14350.

DUMMY

For your child's safety **WARNING!**

Inspect carefully before each use. Pull the dummy in all directions. Throw away at the first signs of damage or weakness. Only use dedicated soother holders tested to EN 12586. Never attach other ribbons or cords to a dummy, your child may be strangled by them. Do not leave a dummy in direct sunlight or near a source of heat, or leave in disinfectant ("sterilising solution") for longer than recommended, as this may weaken the teat.

CLEANING

Before first use place the dummy in boiling water for 5 minutes, allow to cool, and squeeze out any trapped water from the dummy. This is to ensure hygiene. Clean before each use. Wash in warm soapy water and rinse in clean water or use a dishwasher (top rack only). Remove any water that may have entered the teat by squeezing the teat. Do not clean with solvents or harsh chemicals. Suitable for all forms of sterilisation.

INSTRUCTIONS

Do not store in direct sunlight or near a source of heat. Do not store with or allow to come into contact with solvents or harsh chemicals. Never dip teat in sweet substances or medication, your child may get tooth decay. **REPLACE DUMMY AFTER ONE MONTH, FOR SAFETY AND HYGIENE REASONS.** In the event that the dummy becomes lodged in the mouth, DO NOT PANIC; it cannot be swallowed and is designed to cope with such an event. Remove from the mouth with care, as gently as possible. Complies with EN 1400.

3 Important safety information

Failure to follow these instructions/safety information can lead to danger from the device.

- Unplug the AC adapter from wall socket outlet when the pump is not in use.
- Do not leave Nuby Electric Digital Breast Pump unattended when plugged into a power source.
- Keep the device dry and do not immerse in water.
- Do not reach for an electrical device if it has fallen into water. Unplug immediately.
- Repairs must be conducted by authorised service agencies.

WARNING

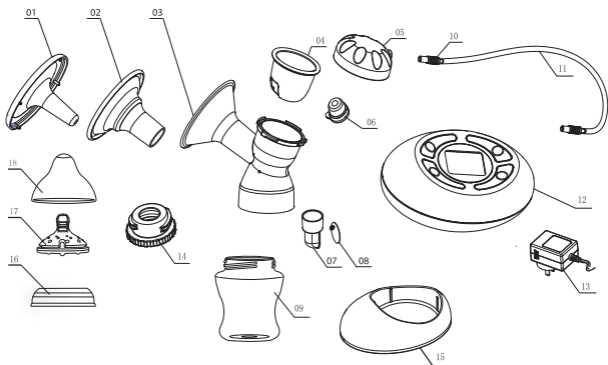
- This is a single user product. Use by more than one person may present a health risk.
- Supervision is required when the Nuby Electric Breast Pump is used in the vicinity of children.
- Use the Nuby Electric Breast Pump only for its intended use as described in this manual.
- Do not use the Nuby Electric Pump while sleeping or overly drowsy.
- Do not operate the Nuby Electric Pump if it is physically damaged or abused.
- Do not place the Nuby Electric Pump near any appliances generating a strong magnetic field.
- Do not place the Nuby Electric Breast Pump under direct sunlight.

Technical data

• Model	XN-2203HA/XH
• Power Adapter	Input 100~240V 50/60Hz, Output 9V / 1.6A
• Power Rating	12.6W
• Stimulation Speed	88T/min
• Stimulation Pressure	-0.016MPa (Max.), 3 levels vacuum
• Expression Speed	20~50T/min, 5 levels speed
• Expression Pressure	-0.026MPa (Max.), 5 levels vacuum
• Overall Noise	≤60dB(A)
• Timer	30 minutes
• Operating Conditions	5~40°C, RH≤90%
• Electric Shock Protection	AC adapter Class II, Host machine Class III

Product description

4



01 Dust Cover	x 1 PP	10 Tubing Connector	x 1 PP/TPE
02 Silicone Cushion	x 1 SIL	11 Tubing	x 1 SIL
03 Breast Shield Body	x 1 PP	12 Pump Motor	x 1
04 Diaphragm	x 1 SIL	13 A/C adapter	x 1
05 Cap	x 1 PP	14 Bottle Adaptor	x 1 PP
06 Cap Plug	x 1 SIL	15 Bottle Stand	x 1 PP
07 Valve Body	x 1 PP	16 Disc Collar	x 1 PP
08 Membrane	x 1 SIL	17 Slow Flow Teat	x 1 SIL
09 Wide Neck Bottle	x 1 PP	18 Teat Hood	x 1 PP

Additional: membrane 2pcs, tubing connector 1pc.

Preparing the pump

WARNING

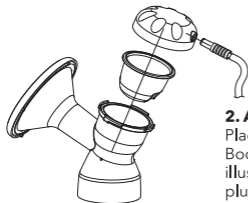
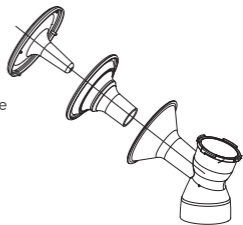
ONLY USE THE POWER ADAPTER SUPPLIED WITH THE NUBY ELECTRIC BREAST PUMP MAKE SURE THE POWER ADAPTER IS COMPATIBLE WITH THE POWER SOURCE.

Before each use, sterilise all parts that have direct contact with breast milk: Bottle, Silicone Cushion, Diaphragm, Cap, Cap Plug, Breast Shields Body, Valve Membrane and Valve Body, Bottle Adaptor.

Assembling Expression Collection Kit

1. Assembling the Breast Shield

Slot in the Silicone Cushion into Breast Shield Body and then slot in the Dust Cover to form the complete Breast Shield Combo.



2. Assembling the Diaphragm

Place the Diaphragm into the Main Breast Shield Body and follow by the Cap onto it as illustrated. Make sure the Cap Plug is plugged into the hole at the Cap and the Cap is tightened securely.

3. Assembling the Valve

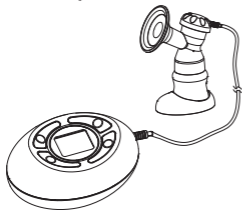
Place the Membrane onto Valve Body by pressing the Membrane into the installation hole as illustrated. Make sure the membrane is seated flat and tight with no visible gap. Mount the Valve Body to the Main Breast Shield Body securely as illustrated.



4. Assembling the Bottle and Bottle Stand

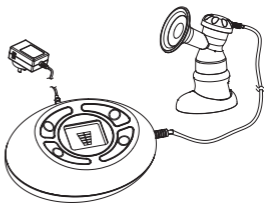
Screw the bottle into the connector at the Main Breast Shield Body and place it on the Bottle Stand.

Connecting Expression collection Kit and Pump motor



Connecting to Power Source

Plug the AC Adapter into the wall socket outlet. Attached the Power Cord to Pump motor as illustrated.



Connecting Tubing

Connect one end of the Tubing to Expression collection Kit and the other end to the Pump motor as illustrated.

Expression

Control Panel Description

Suction Control Button

Mode Button
Stimulation or
Expression



Speed Control Button

ON/OFF Button

1. Place the Breast Shield over your breast so that your nipple is properly centered in the funnel.
2. While the pump unit is connected to power source, press the ON/OFF button to switch on the device.
3. The Nuby Electric Breast Pump operates in two modes: Stimulation and Expression. Once the device is turned on, the timer will start and the pump will begin simultaneously in the Stimulation Mode at fixed speed (88T/min) for two minutes. The device will then move to the Expression Mode at Suction Level 2 with Speed Level 1 (factory default).
4. If your milk starts to flow earlier, press the MODE button to switch between Stimulation and Expression modes. Make sure the milk is flowing into the bottle properly. If you do not press the MODE button, the pump will automatically switch to Expression mode after 2 minutes.
5. Press the MODE button to switch between Stimulator and Expression modes.
6. To adjust the suction to your comfort level during pumping, press the SUCTION CONTROL button to increase the suction, or to decrease the suction.
7. To adjust the speed to your comfort level during pumping press the SPEED CONTROL button to increase the speed, or to decrease the speed.
8. Once you are finished pumping, switch off the breast pump, unplug the device, and disassemble the pump. Clean the device and accessories per the Cleaning Instruction. Close the bottle and store it for later use.

Storing breastmilk*

You can store breast milk in a sterilised container.

- In the fridge for up to 5 days at 4(°C) or lower.
- For 2 weeks in the ice compartment of a fridge.
- For up to 6 months in the freezer.

Breast milk that's been cooled in the fridge can be carried in a cool bag with ice packs for up to 24 hours.

Breastmilk must always be stored in a sterilised container. Always sterilise the breast pump before and after use.

Storing breast milk in small quantities will help to avoid waste. If you're freezing it, make sure you label and date it first.

Defrosting frozen breastmilk

If you have frozen your breastmilk, defrost it in the fridge before giving it to your baby. Once it is defrosted, use it straightaway. Don't refreeze milk once it has thawed.

Warming breastmilk

You can feed expressed milk straight from the fridge if your baby is happy to drink it cold. Or you can warm the milk to body temperature by placing the bottle in lukewarm water or use Nûby's Electric Bottle Warmer.

Once your baby has drunk from a bottle of breast milk it should be used within the hour and anything left over thrown away.

Don't use a microwave to heat up or defrost breastmilk as it can cause hot spots in the milk which can burn your baby's mouth.

*Correct as per NHS guidelines April 2017

Cleaning

Before using your Nuby Electric Digital Breast Pump, disassemble, wash and sterilise all parts of the Expression Collection Combo Kit.

Partially dry components may affect the operation of your Electric Breast Pump. Please ensure that all parts are completely dry before use.

Before Each Use:

- Wash your hands thoroughly with soap and warm water before handling the Nuby Electric Digital Breast Pump or any other attachments.
- Make sure the Nuby breast Pump is cleaned, sterilised and dried.
- Ensure the tubing is free from any liquid. Do NOT operate your Nuby Electric Breast Pump if any liquid is visible in the tubing. (See Tubing Cleaning Instructions on page 9).

General Cleaning Instructions:

- Set aside the tubing and tubing connector. Under the normal working conditions of the pump, the diaphragm would prevent the back-flow of milk.
- Therefore, these items do not need to be washed. In case of finding any liquid or liquid vapor inside the tubing, follow the Tubing Cleaning Instruction carefully before use.
- Wash the breast shield, diaphragm, valve and bottle in warm soapy water.
- Rinse in clean water. Then use a microwave, electric or cold water steriliser for sterilising the parts (according to the manufacturers instructions).
- Do NOT use solvents or abrasives.
- Rinse with hot, clean water.
- To clean the Electric Pump Base, wipe the Base with a damp cloth, using only water or water mixed with mild soap.

Tube Cleaning Instructions:

- Wipe the outside of the tubing with a clean, damp cloth. Avoid getting water or other fluids inside the tubing.
- If liquids are found inside tubing, rinse the tubing with clean hot water. Hang to AIR DRY COMPLETELY BEFORE USING. Do NOT insert any object into tubing.

Note: Before each use, visually inspect the individual components for cracks, chips, tears, discoloration or deterioration; as they may affect the efficiency of the Nuby Electric Digital Breast Pump. In the event that damage to the device is observed, please discontinue use until the parts have been replaced.

Troubleshooting

If there is low or no suction

- Check all connections if they are all properly attached at all connection points.
- Check the valve membrane if it is seated securely and flat on the valve body.
- Hold the breastshield, not the connector or bottle, while expressing.

Ensure the breastshield forms a complete seal around the breast.

For larger breasted women you can remove the soft horn insert and express with the hard horn only.

There should not be any water in the tubing.

All components must be completely dry.

The pump becomes wet

Unplug the mains adapter from the socket.

Switch off the pump.

Do not place the pump upside down. Control panel must point upwards.

Store the pump in a dry, warm place for 24 hours.

Note:

Do not expose the pump to direct sunlight.

Do not accelerate the drying process by use of heat.

The pump does not switch on

Check if the power cord is properly attached to the pump.

Check if the wall socket outlet is turned on.

Contact Nuby UK or return to the store where you purchased the pump.

For more advice, please contact us at:

Customer Care: 0800 334 5844 or enquiries@nuby-uk.com

Form CWY_UK: 67767



Guarantee

All Nuby Electrical Items are guaranteed for 12 months.
Please keep your receipt as proof of purchase.

For advice more advise, please contact us at:

Customer Care: 0800 334 5844 or enquiries@nuby-uk.com

EC REP

DC PHARM Calle Filadores, S/N - NAVE 3
Olesa de Montserrat, 08640 Barcelona, SPAIN

Nuby UK LLP, 13 Burford Way,
Boldon Business Park, Boldon Colliery
Newcastle, Tyne and Wear, NE35 9PZ
www.nuby-uk.com | www.nuby.com

67767雅智自动吸奶器说明书(nuby)铜板纸157g 过哑油 90*130mm

装订方式：骑马钉

设计稿日期：2021年5月15日