

WARRANTY

Nuby's RapidCool™ includes a one-year limited warranty against defects from the date of purchase. In the event of a malfunction or defect during the in-warranty period, Nuby™, at its discretion, will replace or repair the product under warranty. Upon receipt of the product and the proof of purchase with a valid date of purchase, the defective part will be immediately repaired or replaced and returned to you free of charge. Please send defective unit, proof of purchase with valid date of purchase, and a description of the problem you have encountered to:



Talbot's Family Products UK LLP
13 Burford Way
Baldon Business Park
Baldon Colliery
Newcastle upon Tyne
NE35 9PZ

Form CWY_UK: 30131
© 2022 Talbot's
Nuby & Nuby logo licensed to
Talbot's by Admar International.

Made in China

EC REP DC PHARM Calle Filadofes,
S/N - NAVE 3
Olesa de Montserrat, 08640
Barcelona, SPAIN



Note: This warranty does not cover a defect that has been caused by negligence, accident or improper use of the product.

Questions: Call 0800 334 5844 (UK only),
email enquiries@nuby-uk.com or visit www.nuby-uk.com



NUBY UK

Nuby™

RAPIDCOOL™

AT HOME OR ON-THE-GO

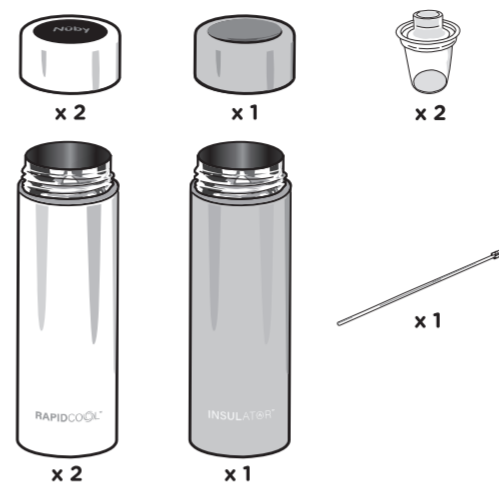


Instructions

RAPIDCOOL™

2 x White RapidCool™
1 x Grey Insulated Flask
2 x Milk Powder Dispensers

2 x White Digital Lids
1 x Grey Plain Lid
1 x Lid Cleaning Brush



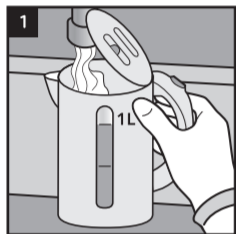
02

TABLE OF CONTENTS

RAPIDCOOL™	2-11
RAPIDCOOL™	02
PREPARATION	04
MAKING THE FEED	05-06
INSULATED FLASK - OUT & ABOUT	07
DIGITAL LID	07
COOLING TIMES	07
RAPIDCOOL™ RESET TIMES	08
CLEANING	09
STORAGE	10
WARNING!	10
DISPOSAL	10
NHS GUIDELINES	11
PRODUCT WARRANTY	12

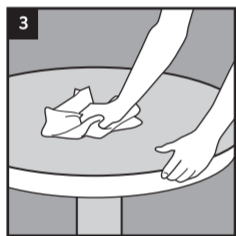
03

PREPARATION

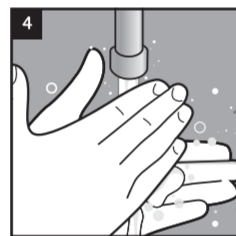


1. Fill the kettle with at least 1 litre of fresh tap water (do not use water that has been boiled before).

2. Boil the water. **Boiled water should be used immediately.** Take care when handling freshly boiled water.



3. Clean and disinfect the surface you are going to use.



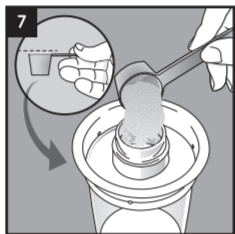
4. It's important that you wash your hands.

5. If you are using a cold-water steriliser, shake off any excess solution from the RapidCool™ bottle and the teat, or rinse them with cooled boiled water from the kettle (not tap water).

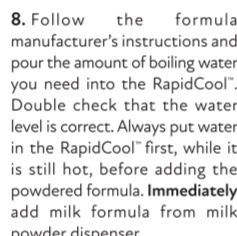
6. Stand the RapidCool™ on the cleaned, disinfected surface.

04

MAKING THE FEED



7. Loosely fill the scoop with formula powder, according to the manufacturer's instructions, then level it using either the flat edge of a clean, dry knife or the leveller provided. Different tins of formula come with different scoops. Make sure you only use the scoop that comes with the formula. Empty each levelled scoop into the milk powder dispenser provided.



8. Follow the formula manufacturer's instructions and pour the amount of boiling water you need into the RapidCool™. Double check that the water level is correct. Always put water in the RapidCool™ first, while it is still hot, before adding the powdered formula. **Immediately** add milk formula from milk powder dispenser.



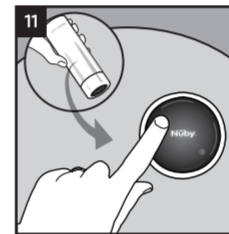
9. Screw the digital lid onto the RapidCool™, ensuring it is fully tightened.



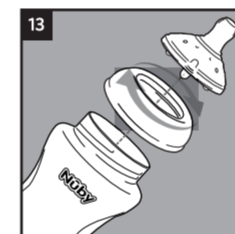
10. Shake the RapidCool™ well to ensure formula powder is fully dissolved.

05

11. Before dispensing into a bottle, invert the RapidCool™ and hold it in that position for a minimum of 5 seconds to allow the integrated thermometer to adjust to the milk temperature. Touch the circle on the digital screen to activate the Nuby logo.

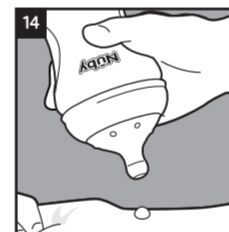


12. When the Nuby logo shows green, the feed is at the correct temperature to dispense. Empty the contents of the RapidCool™ into a clean, sterile bottle.



13. Fit teat into retaining ring, taking care to avoid unnecessary contact with teat nipple, and screw retaining ring onto the bottle base.

14. Test the temperature of the formula on the inside of your wrist before giving it to your baby. It should be body temperature, which means it should feel warm or cool, but not hot.



15. If there is any made-up formula left in the bottle after a feed, throw it away. Clean all parts thoroughly & sterilise immediately after feeding.

06

INSULATED FLASK - OUT & ABOUT

The Insulated Flask included in this kit enables feeding on the go. Simply attach the digital lid to the insulated flask and check the colour of Nuby logo. A red logo indicates that the water is still hot enough to make a feed safely. Pre-warm the Insulated Flask with boiling water to keep water hotter for longer.

DIGITAL LID

Activate the digital screen by touching the circle. This will show the Nuby logo in a specific colour. The table below describes what each colour represents:

RapidCool™

Green	Amber	Red
Feed has cooled to correct temperature and is ready to dispense.	Feed is too hot to dispense, please wait	Feed is too hot to dispense, please wait

Insulated Flask

Green	Amber	Red
Water temperature is too low	Water temperature is too low	Water temperature is hot enough to use

Under most circumstances, the digital lid will not show a red light when attached to the RapidCool™. This is because the RapidCool™ starts cooling water immediately and brings the water temperature below the range that would show a red light. When attached to the insulated flask - and where water is hot enough - the red light will show that the water is safe to use to make a feed.

07

COOLING TIMES

Cooling times should be used as a guide only. Always check food temperatures before feeding. Always follow formula powder manufacturer's instructions for making a feed.

Feed Size (ml)	Water Volume (oz)	Time to Cool (mins)
90	3	2
120	4	2
150	5	3
180	6	4
210	7	5
240	8	5

RAPIDCOOL™ RESET TIMES

Sterilisation/Cleaning Method	Reset Time*
UV Sterilisation**	3 hours
Cold Water Sterilisation**	3 hours
Steam Sterilisation	4 hours
Dishwashing Cleaning	3 hours

* when sterilised immediately after use

** these sterilisation methods do not generate heat and therefore do not activate the flask. If RapidCool™ is cool to the touch, it can be used immediately after these sterilisation methods.

RapidCool™ works by absorbing heat from hot liquids. After being exposed to heat, it will require a minimum of 3 hours before being ready to use again.

08

PRODUCT PARTS

	Silicone Seal	Milk Powder Dispenser	Plain Lid	Digital Lid	Insulated Flask	RapidCool Base
Steam Sterilisation	✓	✓	✓	✓	✓	✓
Microwave Steam Sterilisation	✓	✓	✗	✗	✓	✗
UV Sterilisation	✓	✓	✓	✓	✓	✓
Cold Water Sterilisation	✓	✓	✓	✓	✓	✓
Dishwasher Cleaning	✓	✓	✓	✗	✓	✓

CLEANING

STERILISATION & CLEANING METHODS

Do not expose digital lid to steam as this can cause malfunction. Do not submerge the digital lid for extended periods of time. Handwash in warm soapy water and dry thoroughly after.

09

STORAGE

- Do not store in direct sunlight or near a source of heat.
- Do not store with or allow to come into contact with solvents or harsh chemicals.
- Keep all components not in use out of reach of children.
- Do not leave in direct sunlight or heat, or leave in disinfectant ('sterilising solution') for longer than recommended as this may weaken the product.

WARNING!

- Adult use only.
- Inspect before use. Throw away at first signs of damage or weakness.
- Always stir heated food to ensure even heat distribution and test temperature before serving.
- Always check food temperatures before feeding.
- When making up a feed, follow the formula milk manufacturer's instructions.
- Please keep out of reach of children.
- Do not use in microwave oven.
- Do not use with any other liquid than water.
- Using RapidCool™ shortly after heating in any way may cause excessive external temperatures and risk of burns. Always allow RapidCool™ to reset before use and handling.
- Handle freshly boiled water carefully. Handle RapidCool™ carefully as the bottle base will heat up when in use. Do not prepare feed directly next to baby. Leave RapidCool™ to cool after steam sterilisation.

DISPOSAL

At end of life, dispose of whole product. Do not attempt to remove battery. Contact local waste authority for advice on disposing of electrical goods.

10

NHS GUIDELINES

Always prepare a feed to NHS guidelines

Preparing A Feed

Important – Ensure the RapidCool™, flask lid, feeding bottle and parts you plan to feed with have been cleaned and sterilised before use.

Planning To Travel Abroad?

<https://www.nhs.uk/common-health-questions/childrens-health/can-i-use-bottled-water-to-make-up-baby-formula-infant-formula/>

More Information

Find out more about bottle feeding (<https://www.nhs.uk/conditions/pregnancy-and-baby/bottle-feeding-advice/>) and answers to common questions about formula feeds (<https://www.nhs.uk/conditions/pregnancy-and-baby/infant-formula-questions/>).

11