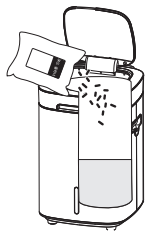


## How to use the Reencele

1



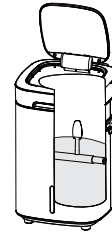
Unpack and pour all microorganism into the machine.

2



Evenly pour 50-60oz (1.5-1.8L) of clean water and close the top cover.

3



Wait 18-24 hours for microorganisms to activate.

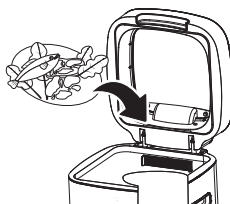
4



After 24 hours, start adding bread, cooked pasta, cooked rice, or any other protein-rich complex carbohydrates into the machine. If the decomposition process is smooth and effective, you may gradually increase food waste inputs.

※ For optimal results, we recommend starting with a wide variety of food waste. Foods high in protein and carbohydrates (like protein powder, brown rice, and animal products) will help boost the growth of microbes. A well balanced nutrient profile will keep them strong and active while ensuring a longer effective lifespan.

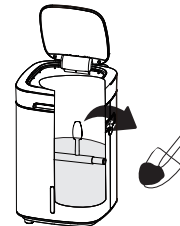
5



For the first month, use no more than 0.44 lb(200g) of dietary fiber. Cut all fruits and vegetables into small, bite-sized pieces before loading into the machine. When microorganisms reach full growth, they will be able to handle larger amounts of food waste.

※ DO NOT INSERT UNCHOPPED WATERMELON RINDS

6



Once the microorganism reaches the limit line, shovel it out and use as fertilizer. The mixture ratio between soil and decomposed organic matter is 4:1. At full growth, microorganisms can process up to 2.2 lb (1.0 kg) per day. The more time allowed for microbes to process the food waste, the better the quality of compost. Based on our data, Reencele yields high-grade compost in roughly 20 days.

\* We recommend maintaining an even variety of food waste for a healthy and effective microbial balance.

\*\* For diets that create less protein-rich food waste, such as vegan or vegetarian diets, it is advised to occasionally add a small amount of protein sources to keep an effective balance of microorganisms.

## What are the White Molds?

Reencele makes compost from leftover materials. During this process, some substances like lignin and glucose don't break down easily. But, white germs called actinomycetes help to break these substances down. When you see these white germs spreading across the surface of the compost, it means the compost is ready to use. Compost with enough of these germs can help plants grow and keep away harmful pathogens.

## Notes

- If the microorganism looks dry, make sure to pour enough water to make it moisturizing.
- If the microorganism gets overly wet, stop putting any food waste into the mixing chamber until it becomes dry.
- Maximum processing amount of food waste is 2.2lbs (1.0kg) per day. (when microorganism is at full-growth status)
- Microorganism is not edible. Make sure to prevent humans or pets from eating it.
- How to clean the machine : Gently clean the surrounding area of the top cover (or any contaminated area) and inner walls by using wet wipes or dish cloths.

## When the culture of microorganisms in food cleaner fails

### Bad Smell

Put one-two (Reencele)shovels of used coffee grounds, and push the "Dry" button for 3~5days.

### When it is overly wet

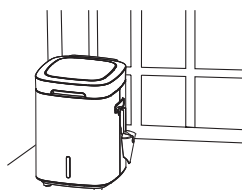
If the decomposing powder is too wet, make sure not to put any food waste until it becomes dry again (and push Dry button for 3~5days)

※Checking on the decomposing powder condition from time to time.

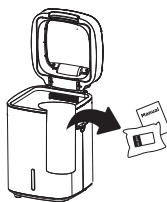
# Proper usage, Please keep the following instructions in mind!

(ver 23.02)

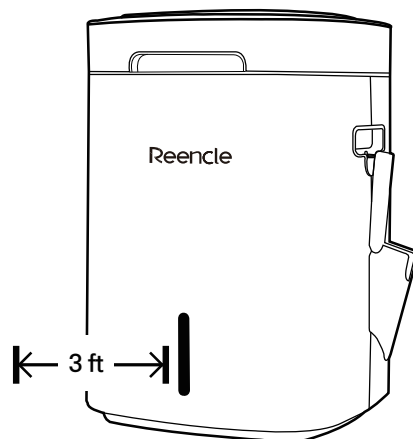
## 1. Be sure to check before installation!



Install in a well-ventilated area or a sub kitchen.  
(Do not install in an enclosed place.)



Make sure to take out  
the microorganism and other accessories.



Leave at least 3 ft space and do not place  
electronic device, magnetic material or  
reflective object in front of the sensor.

## 2. Cautions when using the machine

1. Never unplug or turn off the switch of a power board while operating the machine.
2. It is a normal symptom to have water drop from the (inner) top cover and inner walls after inputting food waste OR due to the temperature difference between inside and outside of ReeNcle.

## 3. Acceptable and unacceptable materials

**! Acceptable food waste** The machine can decompose anything that people can digest.



Fruits



Cheese



Meat, Fish



Noodles, Grains



Cookies, Bread



Cooked Egg

**! Slower decomposition (more than 24 hours)**



Pizza crust



Watermelon rind



Raw vegetables



Sausage / salami



Cabbage



Cucumber



Sweet-Corn



Peanut butter, Nutella



Coffee Grounds



Vegetable—stem, Root  
(water parsley, chives,  
root of spring onion)

※ Please make sure to cut the stems into small pieces to prevent entangling in the mixing rod

**! Unacceptable waste** Do not feed something hard and inedible for people. The kind of food waste could cause the failure of the machine.

**TIP** Food waste means something that can be eaten by animals. Let's identify general waste that we often confuse with food waste.



Bone  
(chicken, pork,  
beef bone)



Shell  
(seashells, abalone,  
crab, lobster)



Pit  
(persimmon, peach)



Solid shell  
(pomegranate, walnut)



Plastic bag, Plastic,  
Rubber



Medicine, Cigarette



Metal, Glass



Wooden chopsticks,  
Paper, Tape

## 4. Causes of failure and bad smell

### Do not overly input!

The optimal input amount of food waste is 1.5lbs(0.7kg)  
The maximum amount of food waste should not exceed 2.2lbs (1kg) per day.

When microorganism is at full-growth stage, food waste can be decomposed up to 1.5kg.



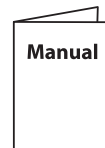
### Fiber!

Cut high-fiber vegetables (such as banana peel, watermelon rind and fresh vegetables) into pieces.



### Be well-informed of the usage!

Must read  
"how to use properly"



Manual

## 5. How to use ReeNcle-Compost for both indoor & outdoor plants

First and foremost, we recommend running ReeNcle without any additions (food wastes) for **48 hours** to make sure all organic wastes are fully decomposed. Or, filter out the clumps by running through a sifter or screener to collect fine compost for faster application.

### ▲ Avoid Overnutrition, Make a ReeMix!

The Compost should not be used alone and must be mixed with soil.  
The golden ratio for this nutrient-rich plant super food(ReeMix) is : **Compost(20%) and Soil(80%)**

### For Indoor Plant Pots

A little goes a long way!  
Just 1 tbsp(≈15g) of ReeMix would be more than enough for most plant pots.



### For Outdoor Plants and Gardens

Remember, the more mature the compost the better the outgrowth. Use your ReeMix as topsoil for your garden. Follow the ratio below to avoid overnutrition.

For every 1m<sup>2</sup>



Apply  
X 6  
ReeNcle Shovels  
of ReeMix

140g (≈ 5oz)