

## Class 66 Locomotive

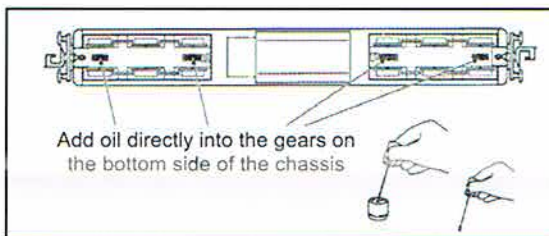
### IMPORTANT INSTRUCTIONS

Please read before using the model

The model requires **oiling before use**.

Apply a small quantity of light synthetic or machine oil into the gears. Your local model shop can advise of the exact oil to use. A suitable 'dropper' can be made by straightening a paper clip and sticking one end into a cork. This enables a small drop of oil to be 'picked up' and accurately applied. Please refer to the diagram.

The model should then be oiled after every 20 hours of use or 2-monthly intervals.



#### IMPORTANT NOTES:

Failure to lubricate may affect any warranty claim.

Please use caution when applying oil as some oils can cause damage to the plastic body.

If oil touches the body, immediately wipe off using a clean non-fluffy cloth.

The motor is a sealed and self-lubricating type. Do not attempt to oil any part of it, not even the armature shaft. If oil enters the motor it will damage the self-lubricating system.

Do not operate the model on track laid directly onto carpet as dust and fibres will impair the mechanism.

Do not leave the model in sunlight for long periods as the paint finish may deteriorate.

#### POWER TYPES (DC & DCC) and OPERATION:

The model is 'Fully DCC Ready'. It is fitted with a 6-pin socket pre-wired into the lighting system.

If you wish to operate the model using DCC, then carefully remove the body (it is a simple push-fit over the chassis). You will find a 'jumper plug chip' fitted to the circuit board. Remove the 'plug' and fit the DCC 6-pin chip of your choice. Remember to fit the chip the correct way up!

If you wish to run the model on standard DC - then do nothing. Our circuit board will automatically recognise you have a DC controller and will operate at normal DC requirements.

**IMPORTANT NOTE:** When using standard 12v DC power, it is important that you use an appropriate 'N' gauge controller as '00' controllers may not allow the measure of control required for our 'N' products.

**INSTALLING COUPLINGS:** The model includes an option of changing the standard 'Rapido' couplings for the supplied Buckeye couplings. To fit the Buckeye couplings simply pull the Rapido type out from the N.E.M. pocket and push the Buckeye into the pocket, ensuring the the slanted end of the coupling arm faces downwards.

**WARRANTY:** Dapol Ltd will remedy any defect or malfunction occurring with the locomotive during a period of six months from the date of purchase. This guarantee does not extend to defects or malfunctions caused by damage or unreasonable use, including failure to provide correct lubrication. If for any reason the model develops any fault within the warranty period the please return to the **Place of Purchase** with your **Proof of Purchase** (till receipt / credit card slip etc). Do **NOT** return it to Dapol Ltd. The seller will then return it to Dapol Ltd under their agreed returns policy.

**Without a suitable proof of purchase Dapol Ltd cannot guarantee to offer any warranty service.**

The Dapol warranty is given in addition to all legal rights of the purchaser under the 'Sale of Goods Act' and shall expire six months from the date of purchase. Dapol Ltd shall not be responsible for any consequential loss or damages arising in regard to any Dapol Ltd product.

**EUROPEAN REGULATIONS:** Dapol products conform to WEEE and RoHS requirements.

If you have a need to dispose of any electrical part, please do so correctly.





# Class 66 'Low Emission' Locomotive

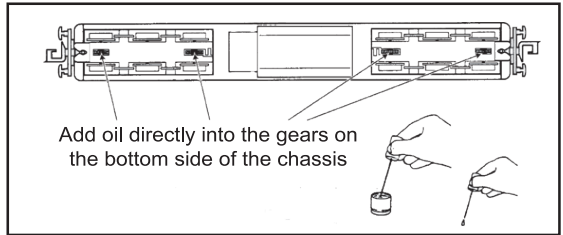
## IMPORTANT INSTRUCTIONS

### Please read before using the model

The model requires **oiling before use**.

Apply a small quantity of light synthetic or machine oil into the gears. Your local model shop can advise of the exact oil to use. A suitable 'dropper' can be made by straightening a paper clip and sticking one end into a cork. This enables a small drop of oil to be 'picked up' and accurately applied. Please refer to the diagram.

The model should then be oiled after every 20 hours of use or 2-monthly intervals.



#### **IMPORTANT NOTES:**

Failure to lubricate may affect any warranty claim.

Please use caution when applying oil as some oils can cause damage to the plastic body.

If oil touches the body, immediately wipe off using a clean non-fluffy cloth.

The motor is a sealed and self-lubricating type. Do not attempt to oil any part of it, not even the armature shaft. If oil enters the motor it will damage the self-lubricating system.

Do not operate the model on track laid directly onto carpet as dust and fibres will impair the mechanism.

Do not leave the model in sunlight for long periods as the paint finish may deteriorate.

#### **POWER TYPES (DC & DCC) and OPERATION:**

The model is 'Fully DCC Ready'. It is fitted with a 6-pin socket pre-wired into the lighting system.

If you wish to operate the model using DCC, then carefully remove the body (it is a simple push-fit over the chassis). You will find a 'jumper plug chip' fitted to the circuit board. Remove the 'plug' and fit the DCC 6-pin chip of your choice. Remember to fit the chip the correct way up!

If you wish to run the model on standard DC - then do nothing. Our circuit board will automatically recognise you have a DC controller and will operate at normal DC requirements.

**IMPORTANT NOTE:** When using standard 12v DC power, it is important that you use an appropriate 'N' gauge controller as '00' controllers may not allow the measure of control required for our 'N' products.

**INSTALLING COUPLINGS:** The model includes an option of changing the standard 'Rapido' couplings for the supplied Buckeye couplings. To fit the Buckeye couplings simply pull the Rapido type out from the N.E.M. pocket and push the Buckeye into the pocket, ensuring the the slanted end of the coupling arm faces downwards.

**WARRANTY:** Dapol Ltd will remedy any defect or malfunction occurring with the locomotive during a period of six months from the date of purchase. This guarantee does not extend to defects or malfunctions caused by damage or unreasonable use, including failure to provide correct lubrication. If for any reason the model develops any fault within the warranty period the please return to the **Place of Purchase** with your **Proof of Purchase** (till receipt / credit card slip etc). Do **NOT** return it to Dapol Ltd. The seller will then return it to Dapol Ltd under their agreed returns policy.

**Without a suitable proof of purchase Dapol Ltd cannot guarantee to offer any warranty service.**

The Dapol warranty is given in addition to all legal rights of the purchaser under the 'Sale of Goods Act' and shall expire six months from the date of purchase. Dapol Ltd shall not be responsible for any consequential loss or damages arising in regard to any Dapol Ltd product.

**EUROPEAN REGULATIONS:** Dapol products conform to WEEE and RoHS requirements.

If you have a need to dispose of any electrical part, please do so correctly.



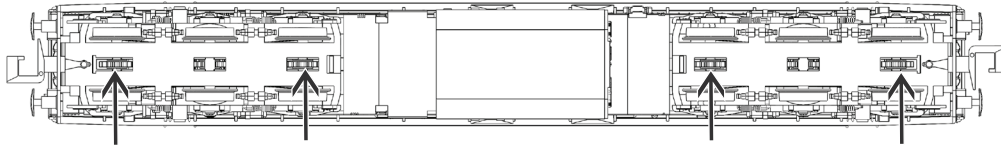
# Class 66

## IMPORTANT INSTRUCTIONS

Please read **BEFORE** using this model

### THIS MODEL NEEDS LIGHT OILING BEFORE USE:

Whilst this model has been lubricated at the manufacturing stage, it is required that you add a small amount of oil directly onto the exposed gears on the underside of both bogies. There are several brands of synthetic oil available on the market such as Dapoil, your local model shop will be able to advise you.

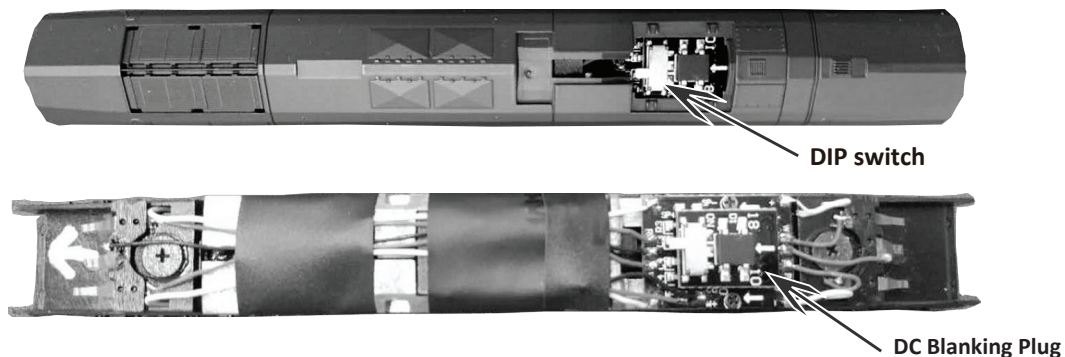


Normal Oiling points into exposed gears without removing body

Failure to oil may affect any warranty claim. Please use caution when applying oil as some types can cause damage to the plastic the model is made from. If oil touches the body then immediately wipe off using a non-fluffy cloth. No part of the motor requires lubrication. Do not operate the model on track that is laid onto carpet as the dust and fibres will impair the mechanism.

### DC OPERATION:

If you wish to run the model on standard DC – then do nothing. Our PCB will automatically recognise that you have DC controller and will allow operation at normal DC parameters. **Important Note:** This model should only be used with a DC controller designed for model railways rated at 12V DC nominal voltage. When (optionally) fitted with an appropriate DCC decoder it may also be used with a compatible DCC control system. The rear light switch is accessible by removing the exhaust port cover. You can turn the rear light off by pulling the DIP switch to the 'OFF' position.



DIP switch

DC Blanking Plug

### DCC OPERATION:

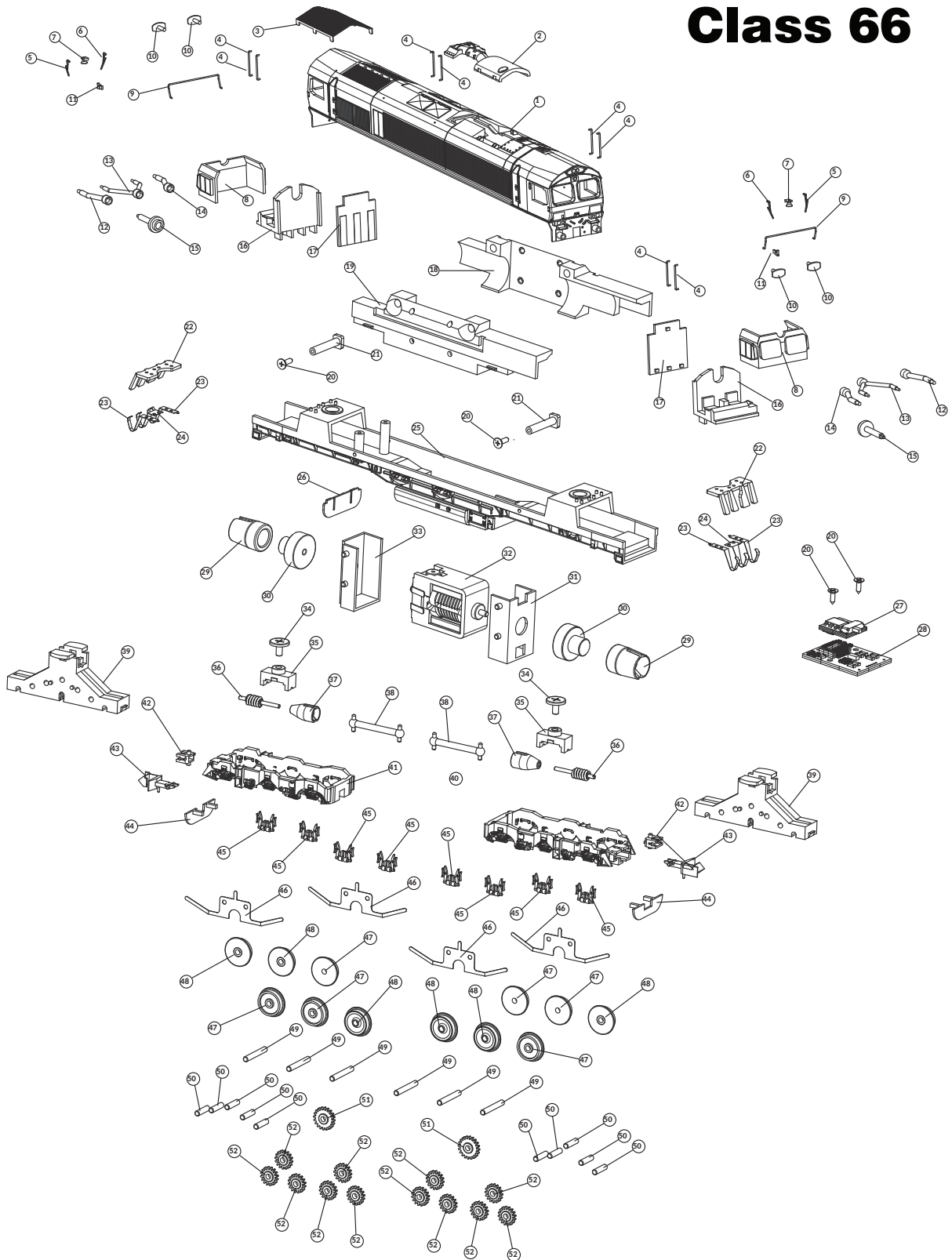
Our model is fully DCC ready. The model is fitted with a DCC board which features a Next 18 plug pre-fitted with a 'blanking plug'. Carefully remove the blanking plug and insert the decoder of your choice. Before converting to DCC please ensure that your decoder will fit the model, as some decoders are large and could have a thick protective outer shroud. To expose the PCB, simply pull the body away from the chassis using finger pressure. Fit your decoder and programme as normal. Reclip the body.

We have designed this model to have independent control of front and rear lamps. For best operation, we recommend a 4 function (or greater) decoder is fitted (for example a 6 function Dapol Imperium Next-18) to your model. If you have purchased the Dapol factory fitted decoder it has been fitted with a pre-programmed Imperium decoder (Please refer to separate DCC operation instructions supplied). If fitting a decoder (including a non-factory fitted Imperium) you will need to consult the decoder manual to correctly configure the decoder for operation of the locomotive lighting.

For reference, the model's lighting assignments are below:

Decoder output	Front light (FLf)	Rear Light (FLr)	AUX 1	AUX 2	AUX3	AUX 4
Lighting	Front white lamps	Front red lamps	Rear white lamps	Rear red lamps	No connection	No connection

# Class 66



## COUPLINGS:

The model comes supplied with standard 'Rapido' couplings fitted, these can be changed to the Buckeye couplings supplied separately with your model simply by gently pulling the existing coupling from the N.E.M. pocket and inserting the alternative coupling. Dapol's magnetic couplings can also be fitted.

**WARRANTY:** Please refer to separately provided warranty paperwork for details

## EUROPEAN REGULATIONS:

Dapol products conform to WEEE and RoHS requirements. If you have need to dispose of any electrical part, please do so correctly.

