

# dapol 00/H0 TRACKSIDE MODEL C009: DELTIC DIESEL



Made in the UK  
using recycled plastic

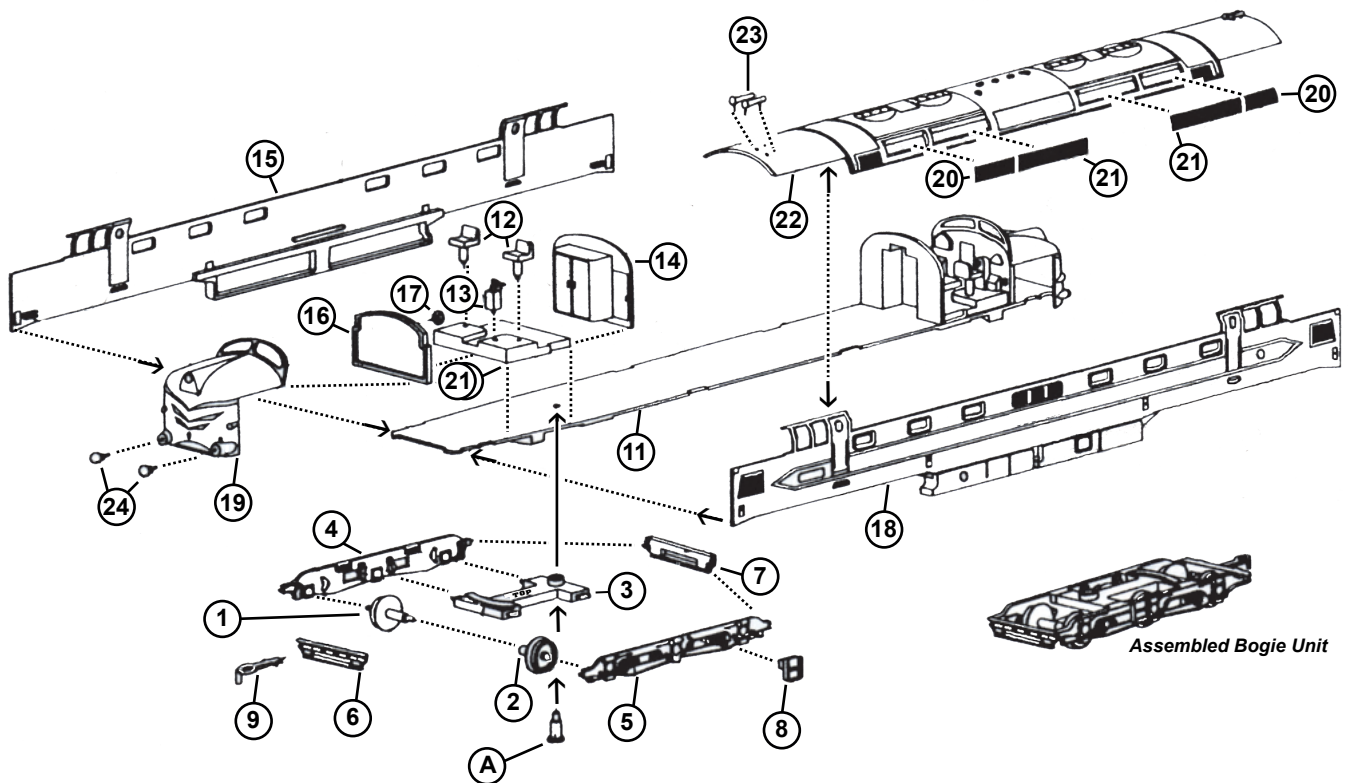


Not suitable for children under 14 years old

**Please Note** - The tools used to produce this model were made over 50 years ago. Over the period, changes have been made and it may be that reference numbers moulded into the plastic parts do not match the numbers used in these instructions. Therefore we advise you to FOLLOW the exploded diagram and instructions.

**ASSEMBLY INSTRUCTIONS:** It is recommended that the instructions and exploded view are studied, the various individual parts identified and that assembly is practised before cementing together. Some parts may best be painted and left to dry before attempting assembly.

- 1: Cement bogie wheel pin halves (1) and socket halves (2) together for all six complete axles. Check that wheels run true.
- 2: Cement bogie stretcher (3) to right hand bogie side frame (4).
- NOTE - Upper face of stretcher is marked "TOP".
- 3: Push stub axles of bogie wheels into the axle holes of bogie side frame.
- 4: Apply cement to tongues of bogie stretcher (3) and press left hand bogie side frame (5) into position. NOTE - Stub axles locate into axle holes on bogie side (5). Check that wheels rotate freely.
- 5: Apply cement to pins on front end of bogie side frames and press bogie front (6) into position.
- 6: Apply cement to pins on front end of bogie side frames and press bogie rear (7) into position.



- 7: Apply cement to holes in bogie side frames and press steps (8) into position.
- 8: Apply cement to slot in bogie front and press coupling (9) into position. **NOTE** - pin on end points downwards.
- 9: Assemble second bogie following operations 3 to 8.
- 10: Apply cement to locating pins on underside of cabin floors (10) and press into position at each end of footplate.
- 11: Apply cement to lugs on seats (12) and controller (13) and push into place on cabin floors (10).
- 12: Apply cement to rear faces of cabin floors and press rear bulkheads (14) into position. **NOTE** - Edges of rear bulkheads are flush with outside edges of footplate.
- 13: Apply cement to side edges of footplate and rear bulkheads and press body side (15) into place. **NOTE** - one side of footplate is marked "Side 15".
- 14: Apply cement to holes on control bulkheads (16) and press handbrake wheels (17) into place.
- 15: Apply cement to front face of cabin floors and to edges of control bulkheads which fit against body side (15). Press control bulkheads into position on footplate and bodyside. **NOTE** - The bottom edge of control bulkheads fit between location pins and front face of cabin floor.
- 16: Apply cement to remaining edges of footplate, rear bulkheads and control bulkheads and press remaining body side (18) into place.
- 17: Apply cement to front & top edges which are in front of the cab windows on body sides (15 & 18). Press body ends (19) into place.

- 18: Cement ventilators (20 & 21) into position on roof (22).
- 19: Apply cement to top edges of body sides and to front edges of roof. Press roof assembly into position on body sides and ends.
- 20: Cement horns (23) into position on roof.
- 21: Cement buffers (24) into position on body ends.
- 22: Apply cement to pivot pin holes on underside of footplate. Push bogie pivot pins (A) through pivot holes in bogie stretchers and into cemented holes. **NOTE** - the coupling on bogies is toward the body end.

**TRANSFER:** Place the 'DELTIC' transfer in warm water and allow the rear carrier sheet to separate from the transfer. Apply the transfer to the painted body in the position showing on the coloured image and allow to naturally dry.

**WARRANTY:** Parts can get bent during transit or by prolonged storage. However misshapen parts can be straightened by placing them in hot water to soften the plastic and then carefully manipulating them back into shape by finger pressure. Please be careful that the water does not cause harm to skin or fingers. In the event of parts being broken or missing, then you **MUST** return to the place of purchase (the seller). The seller will replace your kit and return the original kit to Dapol under their agreed contractual terms. Do **NOT** return to Dapol. Finally please note that Dapol does not keep individual parts for any kit.