

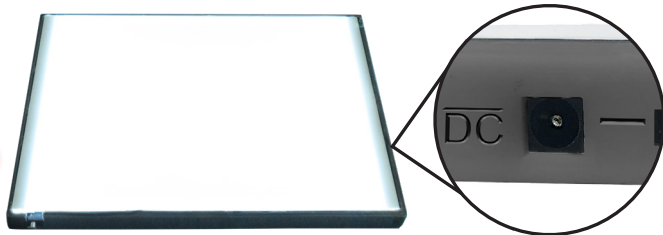
DF LIGHT PANEL

INSTRUCTIONS

Each set contains 1 **Master Light Panel** and a **Power Cord w/Transformer**.

Sets of 3 or more light panels additionally contain **Standard Light Panels** that connect to the Master Panel as well as **Connector Plugs** and **Extension Connector Cords**.

1.



Master Light Panel

Only the *Master Panel* includes a power port on the side of the panel, able to connect directly to the *Power Cord w/Transformer* and 4 connector ports (1 on each side). *Standard Panels* also contain 4 connector ports (see diagram on step 4).

2.

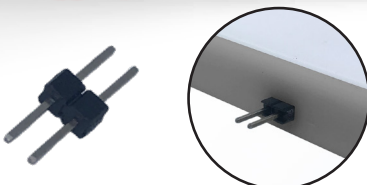


Power Cord w/Transformer

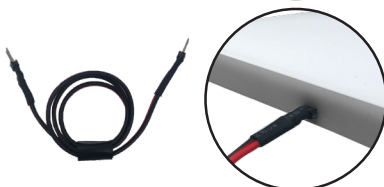
The *Power Cord* features a twist-dial control knob to turn the light feature on/off and to dim or brighten your *Master Panel* and all *Standard Panels* linked to the *Master Panel*.

3.

Connector Plug



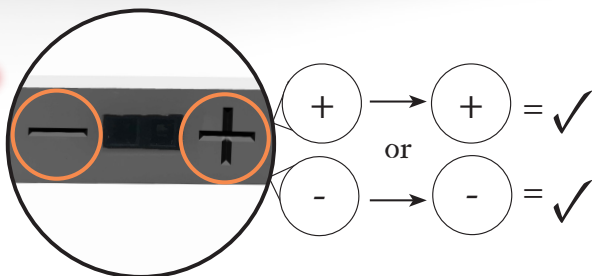
Extension Connector Cord



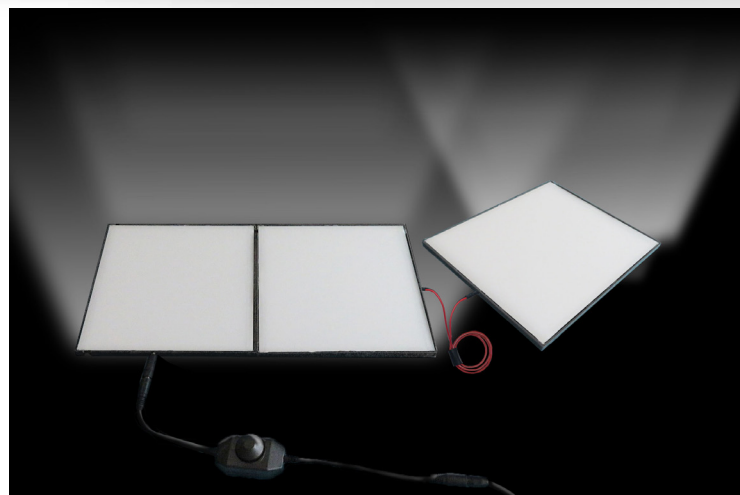
Standard Panels can be daisy-chained onto your *Master Panel* to create a light panel network using either:

- Connector Plugs* to create a continuous panel network or
- An *Extension Connector Cord* to create a break between light panels.

4.



To use a *Connector Plug*, insert the two-prong connector pins into any side port, then insert the other prong ends into a port **matching the “+” or “-”** of the corresponding *Light Panel*. For the *Extension Connector Cord*, choose a consistent color for “+” (**red**) and “-” (**black**) and only connect that color to that assigned polarity. Repeat to create a network of up to 9 panels.



(Three-panel set-up with *Master Light Panel*, *Power Cord*, and two *Standard Panels* linked with a *Connector Plug* and *Extension Connection Cord*)

To see a video on how to use the light panels, please visit <https://shop.dwarvenforge.com/pages/light-panel-instructions>