



Installation Instructions

RalliTEK Hidden Winch Mount - 2024 Crosstrek Wilderness

Suggested Tools:

- Metric Sockets, Wrenches, Ratchets
- Screw Drivers, Pliers
- Drill, Drill Bits, Razor Blade
- Jack, Jack Stands, Wheel Chocks

Safety Warnings:

- Always support the vehicle with jack stands before working underneath
- Use only the parts supplied by RalliTEK to install this kit
- Check ALL the fasteners for tightness before and after road testing the vehicle
- **Do not use an impact wrench with re-installing bolts as stripped threads may occur**

NOTICE

This product replaces the OEM bumper beam and is intended for off-road use only.

Never attempt to flat tow with the winch mount.

Exercise caution during installation and operation of this product to prevent harm or damage to equipment. Thoroughly read and understand all safety precautions and operating instructions before proceeding with the installation and operation of this product.

Fastener Size	Fastener Torque Value	
	ft-lbs (Lubricated) <small>*for use with Loc-Tite</small>	ft-lbs (Dry)
M4	2.4	2.7
M5	4.9	5.5
M6	8.3	9.4
M7	13.9	15.8
M8	20.2	22.9
M10	39.9	45.2
M12	69.6	78.9
M14	111.3	126

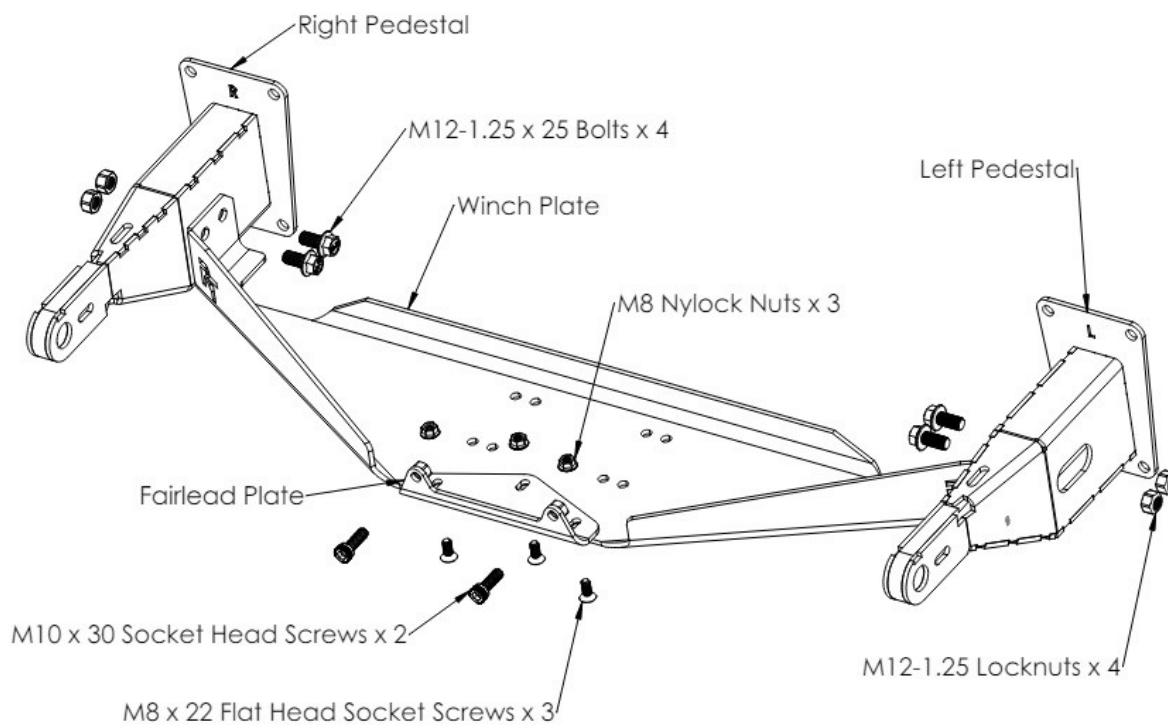


Installation Instructions

Do not operate winch or rig recovery points at angles greater than 15° off centerline.
Recovery points are not designed for shock loads.



Parts Overview





Installation Instructions

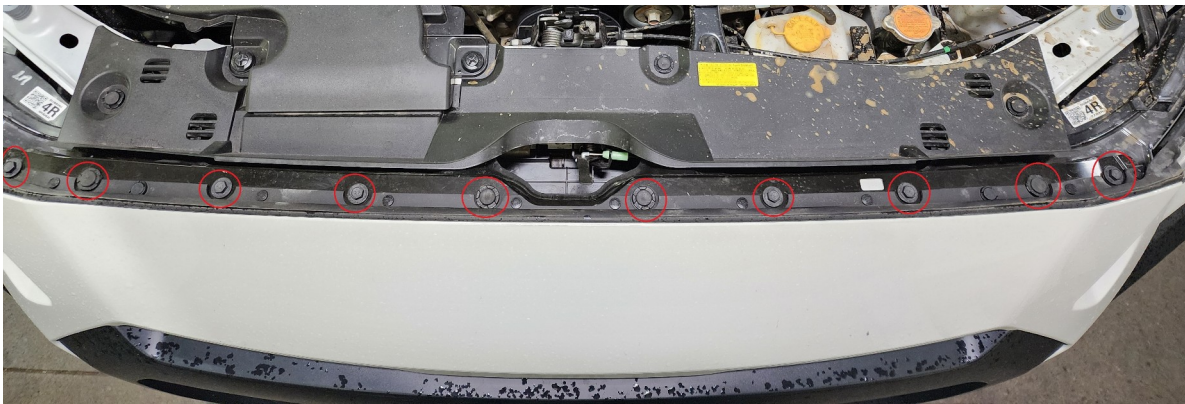
Installation

Unbolt and remove negative cable from battery

Remove engine under tray / skid plate (reference RTEK-100551 skid plate install instructions, if needed).

Remove clips and bolts retaining the front bumper, making sure to unplug both fog lights. Be sure to also remove clips along the bumper near the headlight and fender. With all bolts and clips removed, carefully pull bumper away from the vehicle at the fenders.

Optionally cover headlights and fenders with masking tape to help reduce the chance of scratches.

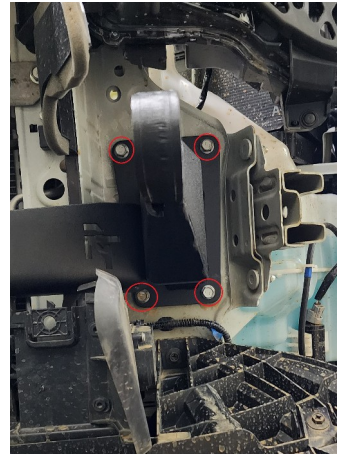
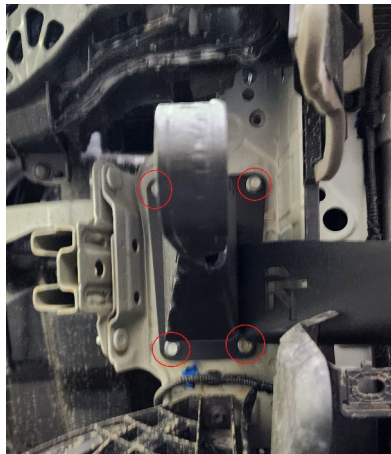




Installation Instructions

Remove front bumper beam by taking out the four bolts on each side, as well as the 2 bolts on the active grille shutters. Save factory hardware. Using factory hardware, loosely install L and R pedestals..

DO NOT UNPLUG THE ACTIVE GRILLE SHUTTER SYSTEM



Trim or remove rubber weather stripping on top of active grille shutter system to a height of approximately 1" shown by the top of the blue tape below.





Installation Instructions

Trim plastic and foam air ducting along both sides of radiator support as shown.



Loosely install fairlead plate to center plate. Bolt center plate to L & R pedestals and tighten the 8 bolts from the L & R pedestals to the car. Install winch per manufacturer instructions.

To reach back bolting locations of winch, it is easier to unbolt the active shutter system and slide the passenger side out as shown. It is ok to unplug the ambient temperature sensor on the passenger side of the vehicle. **Do not unplug the active shutter system motor on the drivers side.** Reinstall active shutter system after complete.





Installation Instructions

Remove grille by removing phillips head screws on the back side and unclipping from bumper. Use masking tape to protect bumper during layout and trim.



Test fit bumper, snug fairlead plate to the bumper, and tighten. Mark for trimming from back side of bumper though fairlead plate.





Installation Instructions

Remove bumper to install grille and final torque all fasteners.

Verify that winch is in gear.

Reinstall bumper, making sure to pass winch cable through the fairlead plate, plug in fog lights, install fairlead with supplied M10 socket head screws.

Install under tray / skid plate (reference RTEK-100551 skid plate install instructions if needed).

Reconnect battery.





Installation Instructions

RalliTEK Products Lifetime Warranty RalliTEK branded products are warranted to the original owner against manufacturing defects in materials and workmanship for the lifetime of the product.

If a RalliTEK branded product covered by this warranty fails due to a manufacturing defect, we will repair the product, without charge, or replace it at our discretion. This policy covers only original, unaltered, and unmodified materials and workmanship. This warranty does not cover damage caused by incorrect installation, accident, improper care, negligence, normal wear and tear, or the natural breakdown of colors and materials over extended time and use. Damage not covered under warranty may be repaired for a reasonable rate and a fee will be charged for return shipping.

For warranty evaluation, please contact RalliTEK Customer Service via phone **(503) 619.0055** or email support@rallitek.com to obtain a return authorization. Once this step has been completed, your product must be returned directly to the **RalliTEK Warranty Department, 13339 NE Airport Way, Suite 500, Portland, OR 97230**. All shipping to the Warranty Department must be pre-paid and insured. RalliTEK will not be liable for damaged or lost inbound packages.

NOTE:

- This warranty is only available within the United States or Canada
- This warranty does not cover products sold by RalliTEK that are not RalliTEK branded products
- This warranty gives you specific legal rights; you may have other rights, which vary from state to state

