


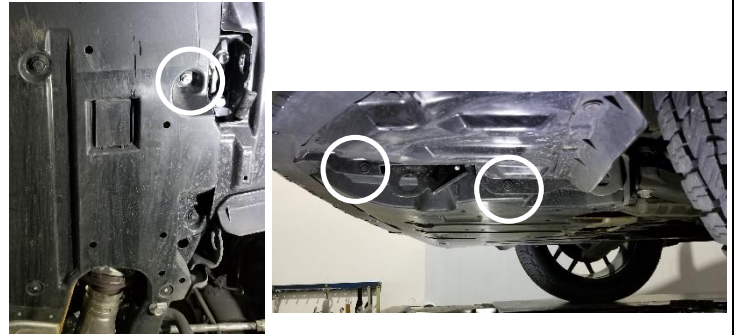
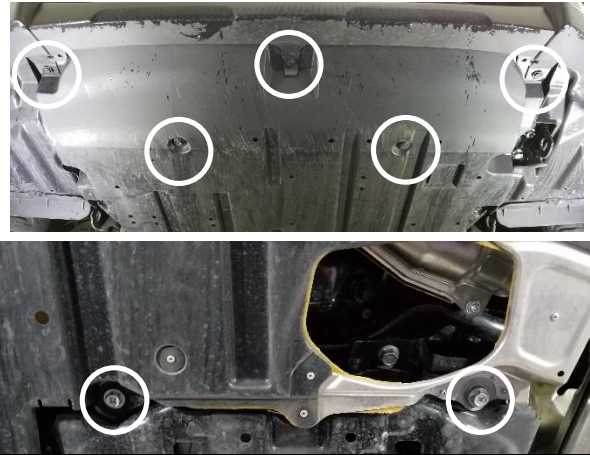


Installation Instructions

<p>Engine Skid Plate for Subaru Ascent PN: RTEK-100281</p>	
<p>Suggested tools</p>	<ul style="list-style-type: none">• Ramps or jack stands• Jack• Hand tools
<p>Safety Warnings</p>	<ul style="list-style-type: none">• Always support the vehicle with jack stands before working underneath• Use only the parts supplied by RalliTEK to install this kit• Check ALL the fasteners for tightness before and after road testing the vehicle• Do not use an air impact wrench with re-installing bolts as stripped threads may occur

REMOVAL OF FACTORY SPLASH GUARD

1. Remove the clips and bolts to remove the factory plastic splash guard



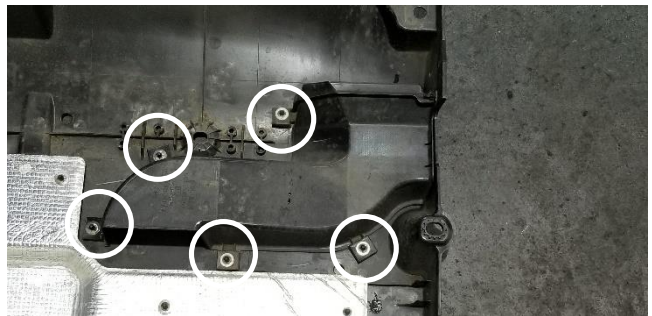
RalliTEK SKID PLATE INSTALLATION

2. Install the front mount as shown, reuse 2 of the plastic clips that were removed earlier.



3. Using a pair of wire cutters, remove the turbo air duct off of the factory splash guard.

NOTE: This step is a permanent modification to the plastic splash guard



4. Using the supplied M6 hardware, attach the turbo air duct to the RalliTEK skid plate

NOTE: Install the bolts to the skid plate before attaching the turbo air duct as shown



5. Using 2 of the supplied 60mm long M8 bolts, attach the front of the skid plate as shown, and then install the remaining 60mm long M8 bolts to the rear of the skid plate. Tighten all of the hardware once all 4 bolts are started.



6. Optional step, you can cut the front of the factory splash guard to fill in the gap between the bumper and the skid plate. Tape a line approximately as shown, cut the front of the splash guard off and reattach using the clips you removed earlier.



WARRANTY

One Year Limited Warranty

RalliTEK warrants to the original purchaser that the parts manufactured and/or sold by RalliTEK (the Product) is free from defects in material and workmanship under normal use. RalliTEK warrants that the Product will perform substantially in accordance with the specifications set forth in the documentation provided with it. The above express warranties are made for a period of the lesser of 12,000 miles or 12 months from the date the Product is installed in your vehicle.

Any improper use, operation beyond capacity, substitution of parts not approved by **RalliTEK** in writing, any alteration or repair by others, or any removal, defacing or altering of the identification shall void this warranty. There is no warranty on high-performance or race related parts due to the nature of usage.

The purchaser shall notify **RalliTEK** at 888-773-1212 of any defect within the warranty period no later than thirty (30) days after purchaser discovers the defect. Should any failure to conform to this warranty appear within the warranty period, RalliTEK shall, on notification, correct the nonconformity at its option, either by repairing any defective part, or by making available, FOB RalliTEK plant, a repaired or replacement part. The purchaser must insure any defective item being returned because RalliTEK does not assume risk of loss or damage while in transit. No payment or reimbursement shall be made for installation, removal, transportation or other charges. The remedies set forth in this instrument are exclusive, and the liability of RalliTEK with respect to any sale shall not exceed the price of the product on which the liability is based.

EXCEPT AS STATED OTHERWISE IN THIS WARRANTY, **RalliTEK** MAKES NO WARRANTIES, EXPRESS OR IMPLIED, INCLUDING WITHOUT LIMITATION, ANY WARRANTY OF MERCHANTABILITY OR FITNESS FOR A PARTICULAR PURPOSE. Some states do not allow limitations on how long an implied warranty lasts, so the above limitation may not apply to you. RalliTEK shall not in any case be liable for special, incidental, consequential, indirect, or other similar damages arising from any breach of these warranties even if RalliTEK or its agent has been advised of the possibility of such damages. Some states do not allow the exclusion or limitation of incidental or consequential damages so the above limitation or exclusion may not apply to you.

This warranty is governed by the laws of the State of Oregon.

