




# Installation Instructions

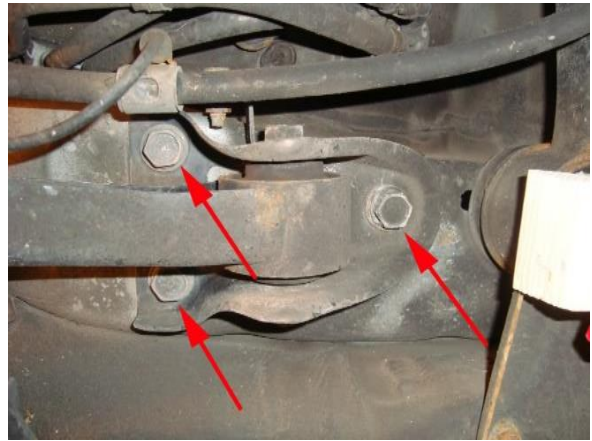
<p><b>RalliTEK Adjustable Trailing Arm Bracket</b></p> <p><b>PN: RTEK-100142</b></p>	 <p>The image shows a blue metal trailing arm bracket with a RalliTEK logo on its side. Above the bracket is the RalliTEK logo in a stylized font.</p>
<p><b>Suggested tools</b></p>	<ul style="list-style-type: none"><li>• Ramps or jack stands</li><li>• Jack</li><li>• Hand tools</li></ul>
<p><b>Safety Warnings</b></p>	<ul style="list-style-type: none"><li>• Always support the vehicle with jack stands before working underneath</li><li>• Use only the parts supplied by RalliTEK to install this kit</li><li>• Check ALL the fasteners for tightness before and after road testing the vehicle</li><li>• Do not use an air impact wrench with re-installing bolts as stripped threads may occur</li></ul>

## REMOVAL OF FACTORY TRAILING ARM BRACKET

1. Remove the emergency brake cable from the trailing arm bracket and loosen the bolt for the trailing arm.



2. Remove the 3 bolts that hold the trailing arm bracket to the chassis. Retain the bolts for step 3.



## INSTALL RALLITEK TRAILING ARM BRACKET

3. Using the factory bolts, install the RalliTEK trailing arm bracket. Make sure you do not tighten the bolts until all 3 are threaded in.
  - a. Torque bolts to 85 ft-lbs



4. Reinstall trailing arm into the appropriate hole in the bracket, see picture for trailing arm location



5. Install the supplied bolt, spacer and nut for the emergency brake cable in the appropriate hole.



6. Set the car on the ground and torque the trailing arm bolt to 66 ft-lbs  
- Move to the other side and repeat the above steps

## WARRANTY

### **One Year Limited Warranty**

**RalliTEK** warrants to the original purchaser that the parts manufactured and/or sold by RalliTEK (the product) is free from defects in material and workmanship under normal use. RalliTEK warrants that the product will perform substantially in accordance with the specifications set forth in the documentation provided with it. The above express warranties are made for a period of the lesser of 12,000 miles or 12 months from the date the product is installed in your vehicle.

Any improper use, operation beyond capacity, substitution of parts not approved by **RalliTEK** in writing, any alteration or repair by others, or any removal, defacing or altering of the identification shall void this warranty. There is no warranty on high-performance or race related parts due to the nature of usage.

The purchaser shall notify **RalliTEK** at 888-773-1212 of any defect within the warranty period no later than thirty (30) days after purchaser discovers the defect. Should any failure to conform to this warranty appear within the warranty period, RalliTEK shall, on notification, correct the nonconformity at its option, either by repairing any defective part, or by making available, FOB RalliTEK plant, a repaired or replacement part. The purchaser must insure any defective item being returned because RalliTEK does not assume risk of loss or damage while in transit. No payment or reimbursement shall be made for installation, removal, transportation or other charges. The remedies set forth in this instrument are exclusive, and the liability of RalliTEK with respect to any sale shall not exceed the price of the product on which the liability is based.

EXCEPT AS STATED OTHERWISE IN THIS WARRANTY, **RalliTEK** MAKES NO WARRANTIES, EXPRESSED OR IMPLIED, INCLUDING WITHOUT LIMITATION, ANY WARRANTY OF MERCHANTABILITY OR FITNESS FOR A PARTICULAR PURPOSE. Some states do not allow limitations on how long an implied warranty lasts, so the above limitation may not apply to you. RalliTEK shall not in any case be liable for special, incidental, consequential, indirect, or other similar damages arising from any breach of these warranties even if RalliTEK or its agent has been advised of the possibility of such damages. Some states do not allow the exclusion or limitation of incidental or consequential damages so the above limitation or exclusion may not apply to you.

This warranty is governed by the laws of the State of Oregon.

