



Installation Instructions

RalliTEK Rear Strut Extension

Suggested Tools:

- Metric Sockets, Wrenches, Ratchets
- Screw Drivers, Pliers
- Jack, Jack Stands, Wheel Chocks

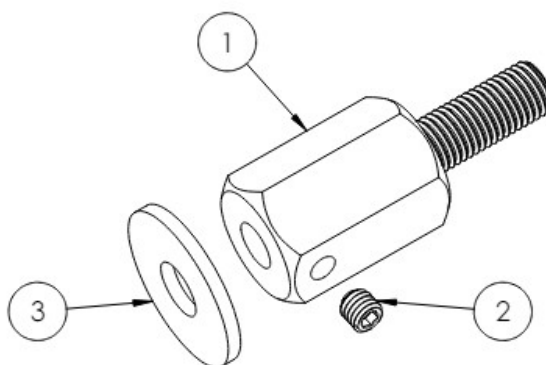
Safety Warnings:

- Always support the vehicle with jack stands before working underneath
- Use only the parts supplied by RalliTEK to install this kit
- Check ALL the fasteners for tightness before and after road testing the vehicle
- **Do not use an impact wrench with re-installing bolts as stripped threads may occur**

Fastener Size	Fastener Torque Value	
	ft-lbs (Lubricated) <small>*for use with Loc-Tite</small>	ft-lbs (Dry)
M6	5.7	7.13
M10	14.72	18.4
M12	17.92	22.4

Parts Overview

ITEM NO.	PART NUMBER
1	Rear Strut Extension
2	M6x1mm Cup Point Set Screw
3	Fender Washer





Installation Instructions

Remove the rear struts from the vehicle

- Remove the springs from the struts
- Slide the bump stop and dust cover below shock shaft shoulder

Install the Multi-Link Rear Shock Shaft Extension in the order below

- Install the supplied washer onto the shoulder
- Apply the supplied loc-tite to the threads of the shock shaft
- Thread the shock shaft extension onto the shock shaft and tighten
- Tighten supplied M6 set screw
- Push the bump stop back on to the shoulder and reassemble the strut (cycling the strut tends to seat everything where it needs to be)

NOTE: The easiest way to achieve proper torque from strut extension to shock, is to pad vice grips with a shop rag and clamp on the top most portion of the shock shaft.

Reinstall the rear struts into the vehicle, it may be more difficult during installation as the strut is now longer than it was before





Installation Instructions

RalliTEK Products Lifetime Warranty RalliTEK branded products are warranted to the original owner against manufacturing defects in materials and workmanship for the lifetime of the product.

If a RalliTEK branded product covered by this warranty fails due to a manufacturing defect, we will repair the product, without charge, or replace it at our discretion. This policy covers only original, unaltered, and unmodified materials and workmanship. This warranty does not cover damage caused by incorrect installation, accident, improper care, negligence, normal wear and tear, or the natural breakdown of colors and materials over extended time and use. Damage not covered under warranty may be repaired for a reasonable rate and a fee will be charged for return shipping.

For warranty evaluation, please contact RalliTEK Customer Service via phone **(503) 619.0055** or email info@RalliTEK.com to obtain a return authorization. Once this step has been completed, your product must be returned directly to the **RalliTEK Warranty Department, 13339 NE Airport Way, Suite 500, Portland, OR 97230**. All shipping to the Warranty Department must be pre-paid and insured. RalliTEK will not be liable for damaged or lost inbound packages.

NOTE:

- This warranty is only available within the United States or Canada
- This warranty does not cover products sold by RalliTEK that are not RalliTEK branded products
- This warranty gives you specific legal rights; you may have other rights, which vary from state to state

