



Installation Instructions

RalliTEK Rear Subframe Drop Kit



Suggested Tools:

- Metric Sockets, Wrenches, Ratchets
- Jack, Jack Stands, Wheel Chocks

Safety Warnings:

- Always support the vehicle with jack stands before working underneath
- Use only the parts supplied by RalliTEK to install this kit
- Check ALL the fasteners for tightness before and after road testing the vehicle
- **Do not use an impact wrench when re-installing bolts as stripped threads may occur**

NOTICE

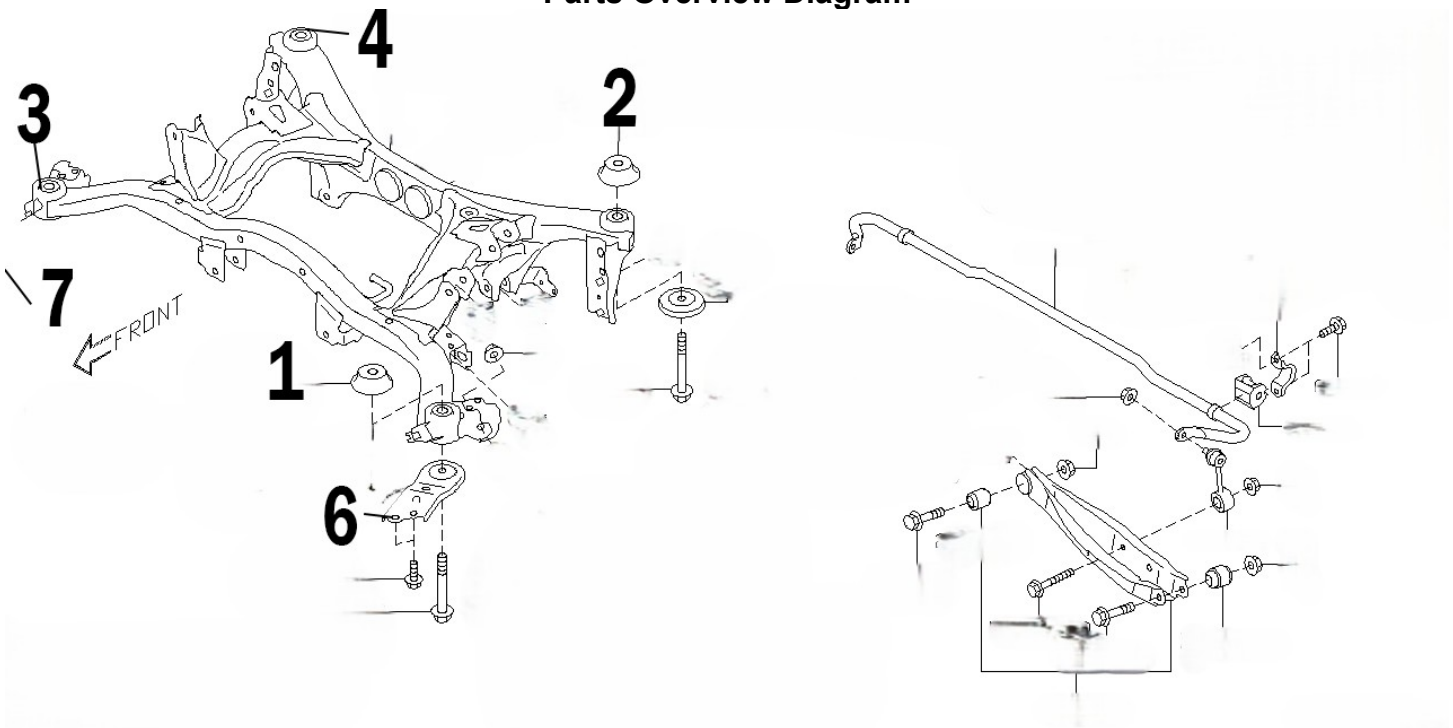
Exercise caution during installation and operation of this product to prevent harm or damage to equipment. Thoroughly read and understand all safety precautions and operating instructions before proceeding with the installation and operation of this product.

Fastener Size	Fastener Torque Value	
	ft-lbs (Lubricated) <small>*for use with Loc-Tite</small>	ft-lbs (Dry)
M4	2.4	2.7
M5	4.9	5.5
M6	8.3	9.4
M7	13.9	15.8
M8	20.2	22.9
M10	39.9	45.2
M12	69.6	78.9
M14	111.3	126




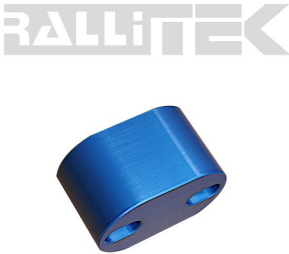


Installation Instructions

Parts Overview Diagram





Installation Instructions

Part	Diagram Reference #	Qty	Picture
Subframe Spacer	1, 2, 3, 4	4	
Subframe Spacer	6, 7	2	
Brake Line Extension	Not Shown	2	
Subframe Spacer Bolt	Bolt For Spacer 1, 2, 3, 4	4	
Subframe Spacer Bolt	Bolt for Spacer 6, 7	4	
Brake Line Extension Bolt	Bolt for Brake Line Extension	2	
Brake Line Extension Nut	Nut for Brake Line Extension	2	



Installation Instructions

Installation

Jack up the vehicle and support with jack stands. Use the parking brake and a wheel chock to prevent the vehicle from rolling. Use a 19mm socket and breaker bar to remove rear wheels. Remove rear wheels from vehicle.

Unbolt rear brake line bracket bolt from the rear knuckle so the brake line is free from the knuckle.



Remove the two bolts at the front of the rear subframe on each side. These are located in front of the rear wheel well. Shown in 6 and 7 in diagram.





Installation Instructions

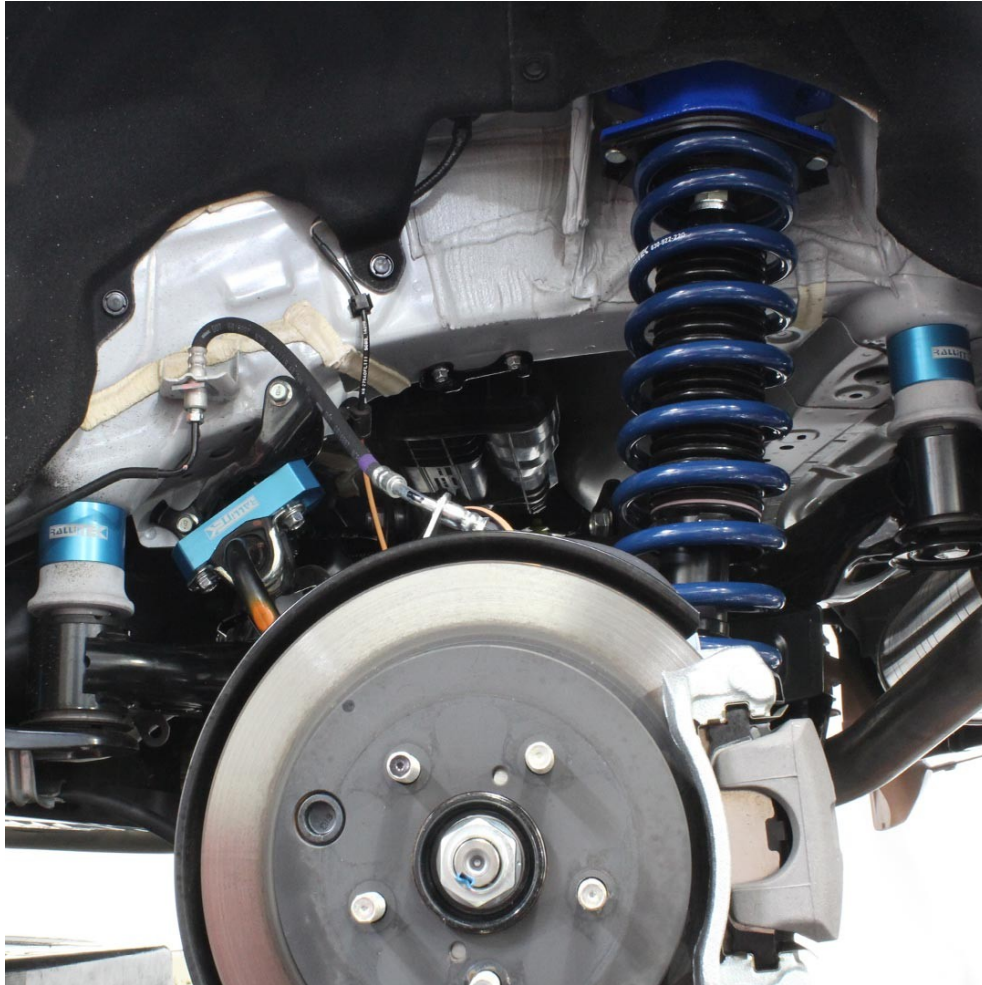
Using a 19mm socket, loosen one main subframe bolt at a time and replace the bolt with RalliTEK M14 subframe bolts (1,2,3,4 in diagram). Install these bolts loosely (about 4-5 turns) in order to support the weight of the subframe (pictured below).





Installation Instructions

After installation of RalliTEK subframe bolts, install the spacers one at a time. Starting with 1 and then repeating with 2, 3, and 4 in the diagram, work your way around each one--loosening one bolt at a time and installing the spacer and corresponding bolt back onto the vehicle. Only one bolt should be removed from the subframe at a time. The RalliTEK subframe spacers will go on top of the white/gray OEM spacers, if you have them on your vehicle (pictured below).





Installation Instructions

Install the support spacers shown in 6 and 7 of diagram.



Tighten and torque all subframe bolts one at a time, working your way around each one to insure the rear subframe is pushed up and back into place. Torque specs below:

Main Subframe Bolts – 107 ft/lbs
Support Subframe Bolts – 52 ft/lbs

Install the brake line extensions onto the rear knuckle. Use the factory bolt to install the bracket onto the knuckle and then the supplied M8 bolts and nuts to install the brake line onto the RalliTEK bracket (pictured below).

Ensure the brake line does not rub the knuckle, upper control arm, or wheel after install of the bracket. We recommend tilting the bracket toward the inside of the vehicle to ensure proper clearance of the bracket.

Torque bolts to 15 ft/lbs.





Installation Instructions

Re-install rear wheels and lug nuts. Torque to 89 ft/lbs.

Lower vehicle onto ground with the full weight of the vehicle on the suspension.

Oftentimes, after working on suspension components, an un-torque and re-torque procedure should be completed to reduce suspension binding. If you need to do this, loosen the bolts with the full weight of the vehicle on the suspension. Roll the car forward and then back a few feet at a time, then re-torque to spec.

The vehicle will need to be realigned after installing this product. Please adhere to OEM specifications for alignment.



Installation Instructions

RalliTEK Products Lifetime Warranty

RalliTEK branded products are warranted to the original owner against manufacturing defects in materials and workmanship for the lifetime of the product.

If a RalliTEK branded product covered by this warranty fails due to a manufacturing defect, we will repair the product, without charge, or replace it at our discretion. This policy covers only original, unaltered, and unmodified materials and workmanship. This warranty does not cover damage caused by incorrect installation, accident, improper care, negligence, normal wear and tear, or the natural breakdown of colors and materials over extended time and use. Damage not covered under warranty may be repaired for a reasonable rate and a fee will be charged for return shipping.

For warranty evaluation, please contact RalliTEK Customer Service via phone **(503) 619.0055** or email info@rallitek.com to obtain a return authorization. Once this step has been completed, your product must be returned directly to the **RalliTEK Warranty Department, 13339 NE Airport Way, Suite 500, Portland, OR 97230**. All shipping to the Warranty Department must be pre-paid and insured. RalliTEK will not be liable for damaged or lost inbound packages.

NOTE:

- This warranty is only available within the United States or Canada
- This warranty does not cover products sold by RalliTEK that are not RalliTEK branded products
- This warranty gives you specific legal rights; you may have other rights, which vary from state to state

