

WARNINGS

EXT
RACING SHOX

WARNINGS

1. For the original purchaser, EXT guarantees their shock absorber systems are free from manufacturing defects for the period of two (2) years from the date of the original EXT product retail purchase from an authorized EXT dealer or from an EXT authorized Original Equipment Manufacturer where EXT suspension is included as original equipment on a purchased vehicle, consistent 99/44/EC decree. This limited warranty requires that the EXT suspension product is used under normal conditions and properly maintained as specified by EXT. This limited warranty is only applicable to EXT suspension products purchased new from an authorized EXT source and is made only to the original retail owner (consumer) of the new EXT suspension product and is not transferable to subsequent owners. Should it be determined, by EXT in its sole and final discretion, that an EXT suspension product is covered by this limited warranty, it will be repaired or replaced, by a comparable model, at EXT's sole option, which shall be conclusive and binding. **THIS IS THE SOLE AND EXCLUSIVE REMEDY UNDER THIS LIMITED WARRANTY. ANY AND ALL OTHER REMEDIES AND DAMAGES THAT MAY OTHERWISE BE APPLICABLE UNDER THIS LIMITED WARRANTY ARE EXCLUDED, INCLUDING, BUT NOT LIMITED TO: REMOVAL OR INSTALLATION COSTS; INCIDENTAL, CONSEQUENTIAL OR PUNITIVE DAMAGES.**

2. This limited warranty does not apply to ordinary service, normal wear and tear, malfunctions or failures that result from abuse, neglect, improper assembly, alteration or modification, improper or unauthorized repair or maintenance, crash, accident or collision, or other abnormal, excessive or improper use. **THIS IS THE ONLY WARRANTY MADE BY EXT ON ITS SUSPENSION PRODUCTS AND COMPONENTS, AND THERE ARE NO WARRANTIES WHICH EXTEND BEYOND THE DESCRIPTION HEREIN. ANY WARRANTIES THAT MAY OTHERWISE BE IMPLIED BY LAW INCLUDING, BUT NOT LIMITED TO, ANY IMPLIED WARRANTY OF MERCHANTABILITY OR FITNESS FOR A PARTICULAR PURPOSE ARE GENERALLY AND SPECIFICALLY DISCLAIMED.**

3. The EXT REA MX is specifically designed for EMX use on specified vehicles. Any unauthorized use or fitment voids the EXT limited warranty and may result in failure of the suspension, which may cause property damage, **SERIOUS INJURY or DEATH.** The REA MX is supplied with a spring specifically installed to accommodate gross vehicle weight and rider experience; riders of different weights and experience other than that specified may require a different spring and shall consult an EXT service center to ensure proper application. Do not modify any part of the REA MX, all components are precisely designed to work as a system.

4. Always use EXT Racing Shox original parts for fitment and service. Use of other parts or self-built ones voids the EXT warranty and could cause structural failure. Always rely on authorized EXT service centers for service. Shock absorber contains pressurized gas. Do not open shock absorber damper, service or modify the REA MX.

5. Before every ride, inspect your vehicle and the shock absorber for signs of overheating, leakage, cracks and defects. If you notice faults with EXT products, immediately report them to an EXT service center or EXT Italy.

6. The product limited warranty shall only be valid if the EXT product has been operated and maintained in accordance with recommendations in the user manual (downloadable from the link below). Please read and ensure you understand the information in the user manual and other technical documents related to this product. Because an improperly installed EXT product can be extremely dangerous, we recommended having you EXT product installed by a qualified mechanic.



REBUILD SERVICE INTERVALS

PROFESSIONAL RACING SERVICE RIDING

Every 25 hours riding or 3 months

GENERAL RECREATIONAL RIDING

Every 50 hours riding or 6 months of use.



It is mandatory to use the EV2S oil and original seals



SCAN THE QR CODE TO DOWNLOAD THE COMPLETE USER MANUAL

If you can't download it, please visit the related product page on EXT website

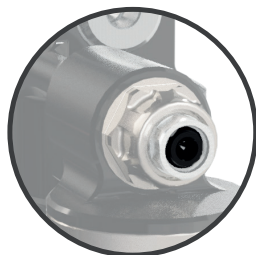


REAR AX

MAXIMUM CLICKS 23

LOW SPEED COMPRESSION

Low speed compression primarily dissipates smaller forces, like those from braking or accelerating. Increase low speed compression damping by turning the center black adjuster clockwise with a 5 mm Allen key.



MAXIMUM CLICKS 21

HIGH SPEED COMPRESSION

High speed compression primarily dissipates larger forces, like those from impacts or drops. Increase high speed compression damping by turning the nickel-colored hex nut clockwise with a 14 mm wrench (or socket).



MAXIMUM CLICKS 13

HYDRAULIC BUMP-STOP CONTROL

Hydraulic bump stop control activates an additional compression damping circuit in the last 15% of travel to dissipate very large forces. Increase hydraulic bump stop damping by turning the black adjuster located on top of the compression valve clockwise with a 4 mm Allen key.



MAXIMUM CLICKS 20

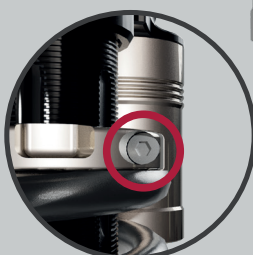
REBOUND


Rebound dissipates return force throughout the stroke. Increase rebound damping by turning the adjuster placed adjacent to the lower shock eyelet with a 5 mm Allen key.



SPRING PRELOAD

Adjustable by screwing or unscrewing the preload ring. Then secure the screw on the preload ring with a 4 mm Allen key.



 ▶ Max spring preload 10 mm

