



Distributed by:
Novarossi Marine USA

Website: www.novarossi.us

Email: sales@novarossi.us



2017



CONTENTS

To-Be.91 Direct Drive.....	4 - 5
To-Be.67 Direct Drive.....	6 - 7
To-Be.46	8 - 9
To-Be.46 OUT-BOARD.....	10 - 11
To-Be.46 Direct Drive.....	12 - 13
MITO.21M.....	14 - 15
KEEP.21M.....	16 -17
KEEP.21M Direct Drive.....	18-19
KEEP.21M OUT-BOARD.....	20-21
3.5 cc engines.....	22-23
2.1 cc engines.....	24
2.5 cc engines.....	25
4.66 cc engines.....	25
Sport Competition Engines LINE.....	26-27
Glowplugs	28
Manifold.....	29
Tuned Pipes.....	30
Oils.....	31
Accessories.....	32-35
Gadgets.....	36-42

NOVAROSS!



NOVAROSSİ



This new edition of our catalogue comes at a time of advanced technology and is a testimony to our commitment for advances in the world market of radio control.

Our industrial and technical processes are done through professional qualifying means, which for years leads the highest reputation for quality of products and so giving confidence in Novarossi World.

Fierce Competition in the world market, along with constantly changing economic environment, increases our determination and ambition to find answers to increasingly complex questions.

A glance of the company headquarters provides a clear understanding about changes NOVAROSSİ WORLD has faced.

With this understanding, we show the difference from what it was only 10 years ago, for structure, members and international relations.

Going forward with experience and evolution, we prepare to meet the twenty-first century in a significant and realistic way, taking on a central concept of "Made in Italy" quality.

Elisa Rossi

Reproducing, in whole or part, of any text, photograph or illustration contained in this publication without the written permission of NOVAROSSİ S.R.L. is strictly prohibited.
All rights reserved.

FACTORY

15 CC MARINE ENGINE



Displacement	15 cc
Max Power R.P.M.	26.500
Practical Range	-
Bore x Stroke (mm.)	26,30 x 27,55
Sleeve n. ports	8
Rear Ball Bearing (Ball Type)	STEEL
Front Ball Bearing (Ball Type)	STEEL
Carburettor Type	13 mm - ROTARY
Carburettor Material	ALUMINIUM
Carburettor Adjustment	MAX SEPARATED
Glowplugs	G6TF
Exhaust Type	REAR
Weight	902 g

Spec Tech

top
engines

TO-BC.91
DIRECT DRIVE



The sleeve has 8 transfer ports. The special shape and positioning of the ports, improve the internal fluid-dynamics to obtain the maximum possible performance. The piston is CNC lightened.



The crankshaft is grinded to increase the mixture flow and has a special shape to reduce turbulences inside the crankcase. The balancing is done by two inserts made of tungsten alloy and the inlet has a silicon filling to reduce the weight of the crankshaft to improve acceleration.



Cooling caps 90°, thread M5 (optional).



The inner shape of the gasket has a special shape. These gaskets use a special rubber that is more resistant to high temperatures.



Special aluminium carburettor easy to set with max needle detached.

Manifolds and Pipes Recommended



40494
Polished manifold for .67/.91 curved 10° with cooling.



40493
Polished manifold for .67/.91 curved 10° without cooling.



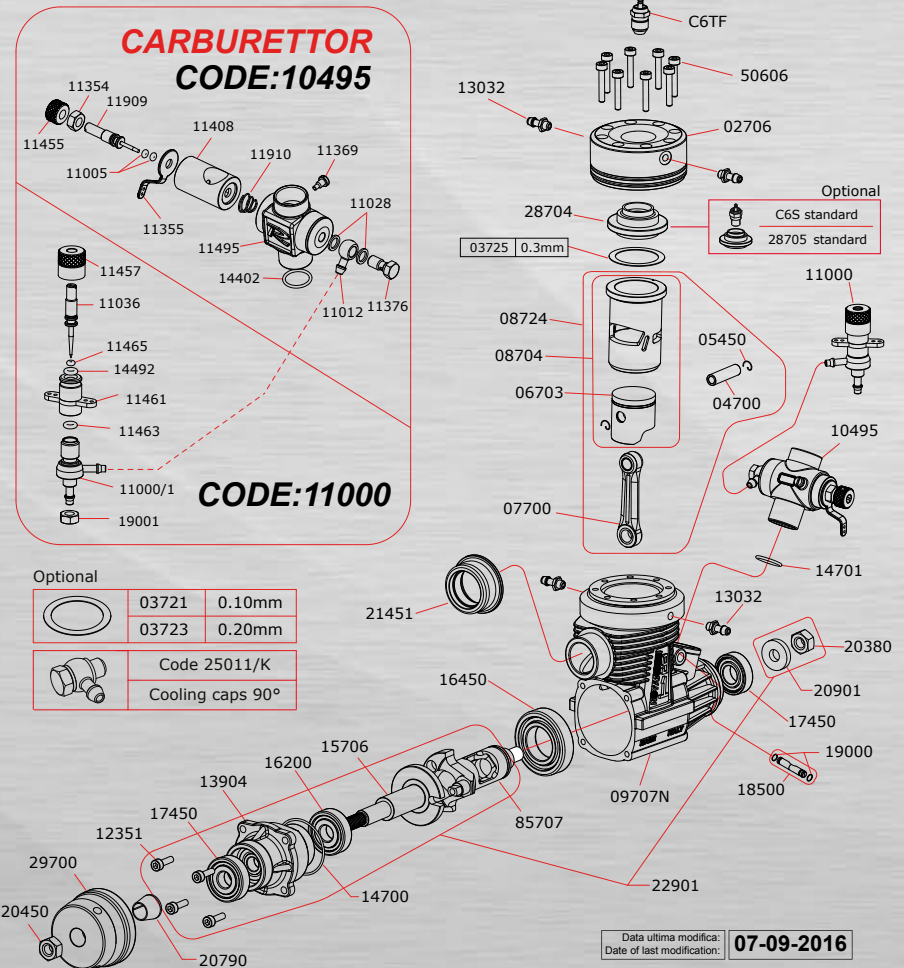
50496
Tuned pipe without silencer, with cooling.



50494
Tuned pipe without silencer, without cooling, 38mm less than 50495-50496.



Exploded View



11 CC MARINE ENGINE



Displacement	11 cc
Max Power R.P.M.	-
Practical Range	-
Bore x Stroke (mm.)	24 x 24
Sleeve n. ports	8
Rear Ball Bearing (Ball Type)	STEEL
Front Ball Bearing (Ball Type)	STEEL
Carburettor Type	12,2 mm - ROTARY
Carburettor Material	ALUMINIUM
Carburettor Adjustment	MAX SEPARATED
Glowplugs	C6TF
Exhaust Type	REAR
Weight	888 g

Spec Tech



TO-BC.67 DIRECT DRIVE



The sleeve has 8 transfer ports. The special shape and positioning of the ports, improve the internal fluid-dynamics to obtain the maximum possible performance. The piston is CNC lightened.



The crankshaft is grinded to increase the mixture flow and has a special shape to reduce turbulences inside the crankcase. The balancing is done by two inserts made of tungsten alloy and the inlet has a silicon filling to reduce the weight of the crankshaft to improve acceleration.



Cooling caps 90°, thread M5 (optional).



The inner shape of the gasket has a special shape. These gaskets use a special rubber that is more resistant to high temperatures.



Special aluminium carburettor easy to set with max needle detached.

Manifolds and Pipes Recommended



40494
Polished manifold for .67/.91 curved 10° with cooling.



40493
Polished manifold for .67/.91 curved 10° without cooling.



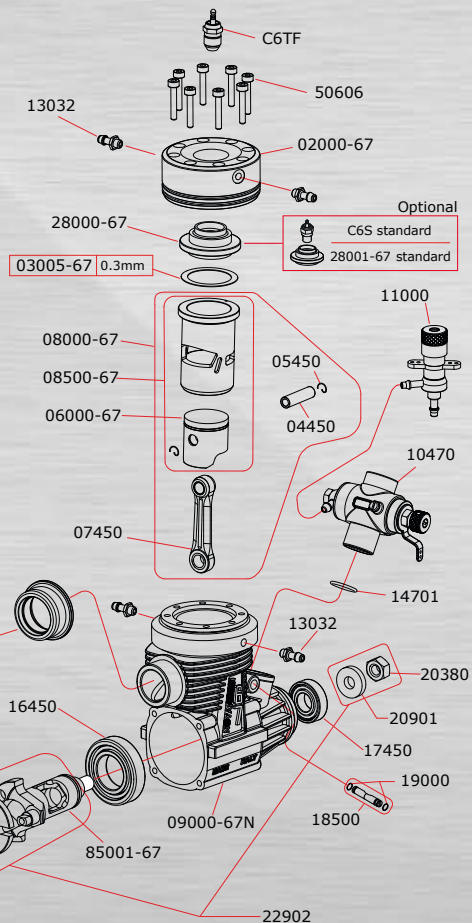
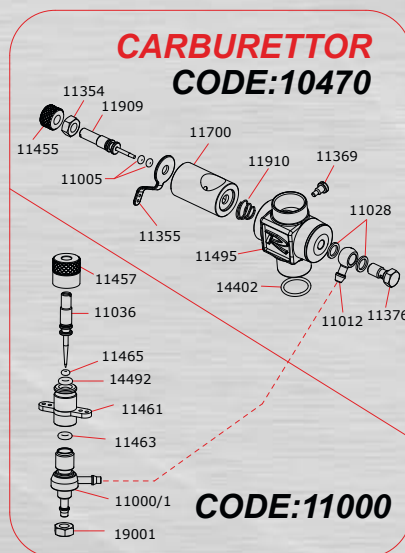
50496
Tuned pipe without silencer, with cooling.



50494
Tuned pipe without silencer, without cooling, 38mm less than 50495-50496.



Exploded View



Optional

	Code 25011/K
	Cooling caps 90°
	03001-67 0.10mm
	03003-67 0.20mm

TO-BE 67 DD



Data ultima modifica:
Date of last modification: **15-11-2016**

7.5 CC MARINE ENGINE

Also available with rear steel ball bearing (To-BE.46/A) and with standard glowplug

Also available with HEAD LESS COOLING



Displacement	7,50 cc
Max Power R.P.M.	29.800
Practical Range	3.000 - 31.800
Bore x Stroke (mm.)	20,85 x 21,94
Sleeve n. ports	9
Rear Ball Bearing (Ball Type)	CERAMIC
Front Ball Bearing (Ball Type)	STEEL
Carburettor Type	9 mm - ROTARY
Carburettor Material	ALUMINIUM
Carburettor Adjustment	MAX SEPARATED
Glowplugs	C6TGF
Exhaust Type	REAR
Weight	491 g

Spec Tech



TO-BE.46



The sleeve has 9 transfer ports. The special shape and positioning of the ports, improve the internal fluid-dynamics to obtain the maximum possible performance. The piston is CNC lightened.



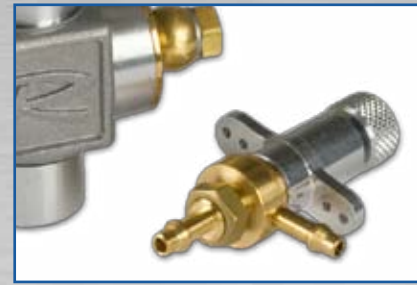
The crankshaft is grinded to increase the mixture flow and has a special shape to reduce turbulences inside the crankcase. The balancing is done by two inserts made of tungsten alloy and the inlet has a silicon filling to reduce the weight of the crankshaft to improve acceleration.



The conrod is made from a superlight aluminum which has been checked ultrasonic. The specific form of the conrod creates little turbulence inside the engine while running.



The inner shape of the gasket has a special shape. These gaskets use a special rubber that is more resistant to high temperatures.



Special aluminium carburettor easy to set with max needle detached.

Manifolds and Pipes Recommended



40900
Manifold with cooling for 7,5cc TOP engines.



40901
Manifold with cooling for 7,5cc TOP engines 180°



40902
Manifold for 7,5cc TOP engines 180°



40904
Polished manifold R46 curved 15°.



40905
Polished manifold R46 curved 5°.



40903
Polished manifold R46 curved 90°.



50900
Silenced tuned pipe for 7,5cc TOP engines.



50901
Tuned pipe for 7,5cc TOP engines.

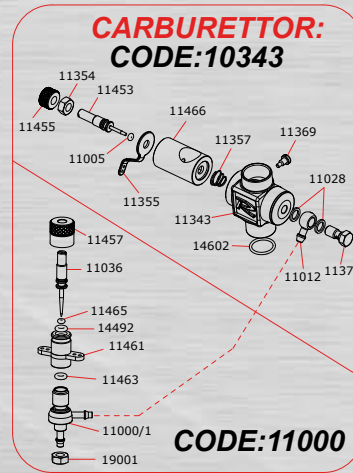


50902
Super silenced tuned pipe with cooling.

To-Be.46

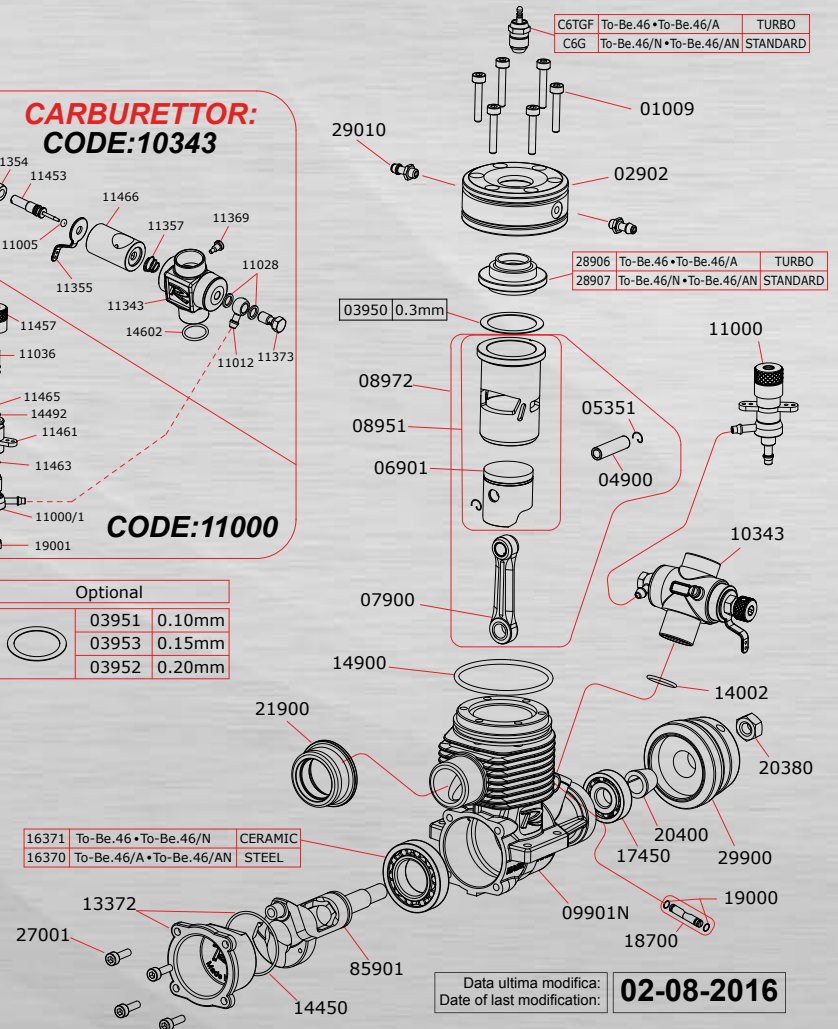


Exploded View



Optional		
	03951	0.10mm
	03953	0.15mm
	03952	0.20mm

16371	To-Be.46 • To-Be.46/N	CERAMIC
16370	To-Be.46/A • To-Be.46/AN	STEEL



Data ultima modifica:
Date of last modification: **02-08-2016**

7.5 CC MARINE ENGINE

Also available



Also available
with HEAD LESS COOLING

Displacement	7,50 cc
Max Power R.P.M.	30.100
Practical Range	3.000 - 31.800
Bore x Stroke (mm.)	20,85 x 21,94
Sleeve n. ports	9
Rear Ball Bearing (Ball Type)	CERAMIC
Front Ball Bearing (Ball Type)	CERAMIC
Carburettor Type	11 mm - ROTARY
Carburettor Material	ALUMINIUM
Carburettor Adjustment	ON-BOARD
Glowplugs	C6TGF
Exhaust Type	REAR
Weight	549 g

Spec Tech



TO-BC.46 OUT-BOARD



The sleeve has 9 transfer ports. The special shape and positioning of the ports, improve the internal fluid-dynamics to obtain the maximum possible performance. The piston is CNC lightened.

The crankshaft is grinded to increase the mixture flow and has a special shape to reduce turbulences inside the crankcase. The balancing is done by two inserts made of tungsten alloy and the inlet has a silicon filling to reduce the weight of the crankshaft to improve acceleration.

The conrod is made from a superlight aluminum which has been checked ultrasonic. The specific form of the conrod creates little turbulence inside the engine while running.

The inner shape of the gasket has a special shape. These gaskets use a special rubber that is more resistant to high temperatures.

Photo Gallery

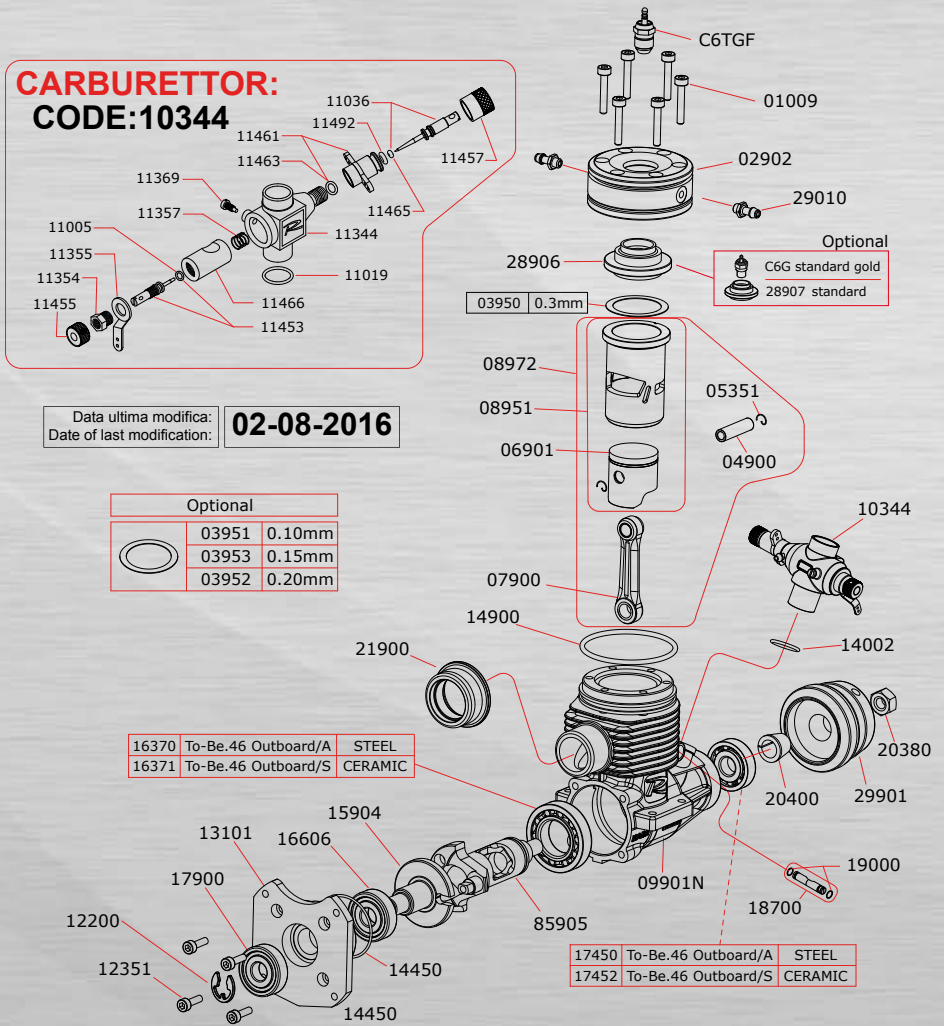


To-Be.46 OUTBOARD



Exploded View

**CARBURETTOR:
CODE:10344**



Data ultima modifica: **02-08-2016**
Date of last modification:

Optional		
	03951	0.10mm
	03953	0.15mm
	03952	0.20mm

7,5 cc MARINE ENGINE



Also available
with HEAD LESS
COOLING



Displacement	7,50 cc
Max Power R.P.M.	29.800
Practical Range	3.000 - 31.800
Bore x Stroke (mm.)	20,85 x 21,94
Sleeve n. ports	9
Rear Ball Bearing (Ball Type)	CERAMIC
Front Ball Bearing (Ball Type)	STEEL
Carburettor Type	11 mm - ROTARY
Carburettor Material	ALUMINIUM
Carburettor Adjustment	MAX SEPARATED
Glowplugs	C6TGF
Exhaust Type	REAR
Weight	491 g

Spec Tech



TO-BC.46 DIRECT DRIVE



The sleeve has 9 transfer ports. The special shape and positioning of the ports, improve the internal fluid-dynamics to obtain the maximum possible performance. The piston is CNC lightened.



The crankshaft is grinded to increase the mixture flow and has a special shape to reduce turbulences inside the crankcase. The balancing is done by two inserts made of tungsten alloy and the inlet has a silicon filling to reduce the weight of the crankshaft to improve acceleration.



The conrod is made from a superlight aluminum which has been checked ultrasonic. The specific form of the conrod creates little turbulence inside the engine while running.



The inner shape of the gasket has a special shape. These gaskets use a special rubber that is more resistant to high temperatures.



Special components for permitted the engine use in direct drive.

Manifolds and Pipes Recommended



40900
Manifold with cooling for 7,5cc TOP engines.



40901
Manifold with cooling for 7,5cc TOP engines 180°



40902
Manifold for 7,5cc TOP engines 180°



40904
Polished manifold R46 curved 15°.



40905
Polished manifold R46 curved 5°.



40903
Polished manifold R46 curved 90°.



50900
Silenced tuned pipe for 7,5cc TOP engines.



50901
Tuned pipe for 7,5cc TOP engines.

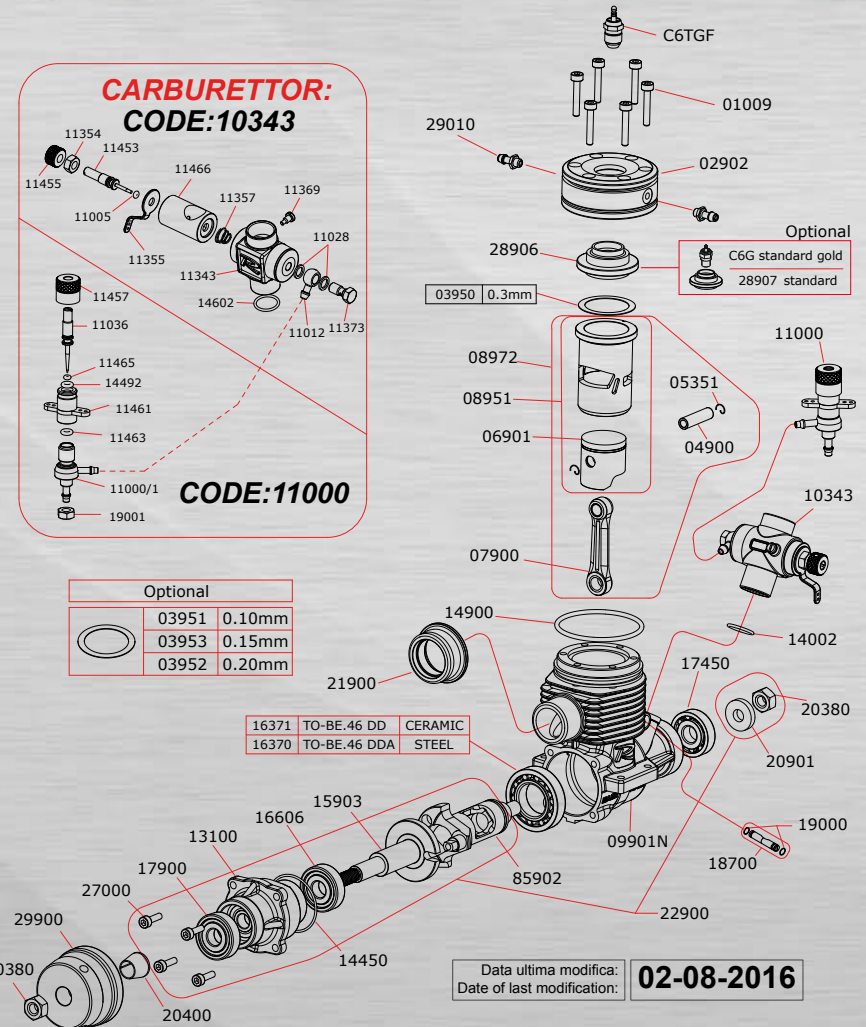


50902
Super silenced tuned pipe with cooling.

TO-BE-46 DIRECT DRIVE



Exploded View



Mitg

3,5 CC EXTRA LONG STROKE MARINE ENGINE



Displacement	3,50 cc
Max Power R.P.M.	41.500
Practical Range	6.000 - 44.000
Bore x Stroke (mm.)	15,88 x 17,60
Sleeve n. ports	9
Rear Ball Bearing (Ball Type)	CERAMIC
Front Ball Bearing (Ball Type)	ceramic
Carburettor Type	9 mm - ROTARY
Carburettor Material	ALUMINIUM
Carburettor Adjustment	ON-BOARD
Glowplugs	C8TGTB
Exhaust Type	REAR
Weight	318 g

Spec Tech



MITO.21M



The sleeve has 9 transfer ports and an exhaust with booster ports. The special shape and positioning of the ports, covered by a patent, improve the internal fluid-dynamics to obtain the maximum possible performance.



The crankshaft is grinded to increase the mixture flow and has a special shape to reduce turbulences inside the crankcase. The balancing is done by 3 inserts made of tungsten alloy and the inlet has a silicon filling to reduce the weight of the crankshaft to improve acceleration.



The rear ball bearing has high quality ceramic balls to minimize wear and inertia to improve acceleration and fuel consumption.



The shifted carburetor grants a better mixture flow inside through the crankcase's intake. This gives the engine an improved fuel efficiency and a better power curve.



In MITO.21M we continue to use the Novarossi's International Patent. This new technology links a new crankcase's manufacturing process and a new main ball bearing.

Manifolds and Pipes Recommended



40040
Sanded Manifold for 3,5cc - 4,66cc engines.



40041
Polished manifold for 3,5/4,66cc engines.



40042
Polished Marine curved 180°.



40043
Watercooled manifold polished and conic for TOP 3,5cc engines.



C.20.23
Polished manifold curved 90° for 3,5/4,66cc engines.



C.20.23A
Sanded Manifold curved 90° for 3,5/4,66cc engines.



50040
Tuned pipe without silencer for 3,5cc engines.



50054
Tuned pipe super silenced with cooling for 3,5cc marine engines.



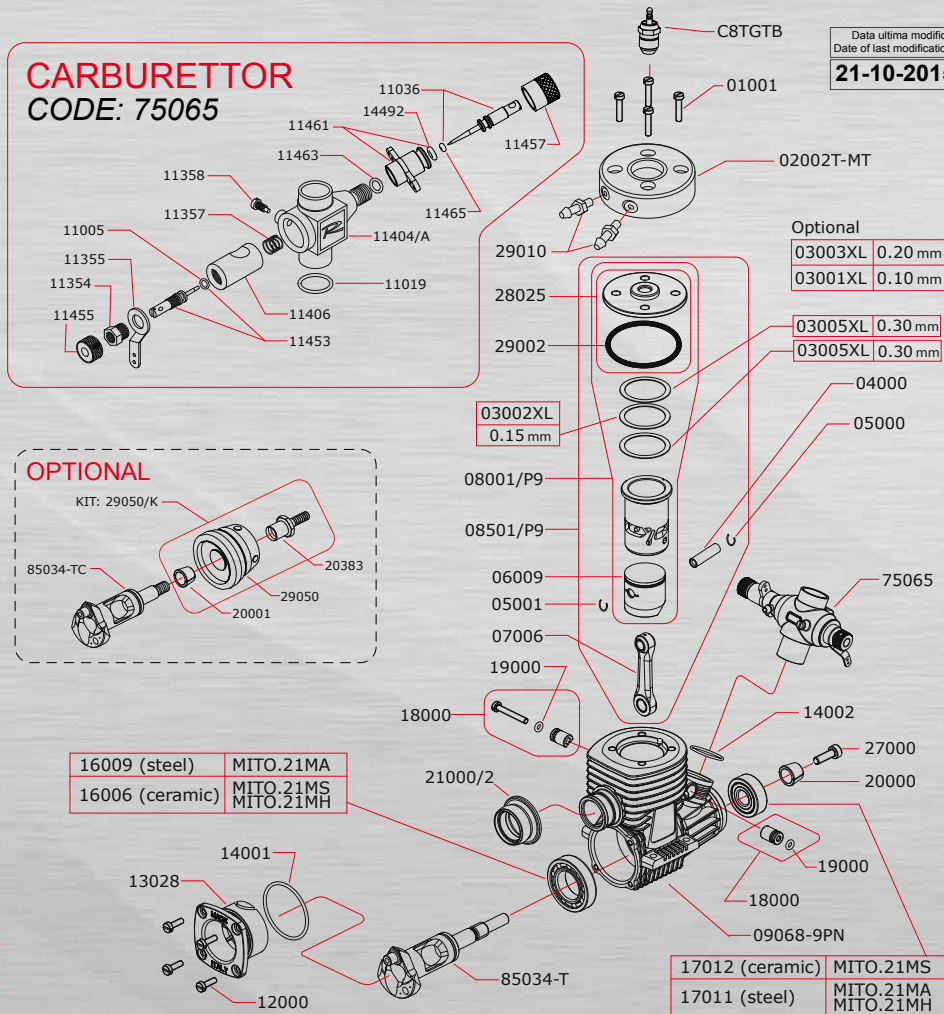
50042
Super silenced tuned-pipe for 3,5cc engines.



50050
Silenced Tuned pipe for 3,5cc TOP engines.

Exploded View

CARBURETTOR CODE: 75065



MITO.21M



3,5 CC EXTRA LONG STROKE MARINE ENGINE



Also available



Displacement	3,50 cc
Max Power R.P.M.	42.800
Practical Range	6.000 - 44.000
Bore x Stroke (mm.)	15,88 x 17,60
Sleeve n. ports	9
Rear Ball Bearing (Ball Type)	CERAMIC
Front Ball Bearing (Ball Type)	STEEL
Carburettor Type	9 mm - ROTARY
Carburettor Material	ALUMINIUM
Carburettor Adjustment	ON-BOARD
Glowplugs	G8TGH
Exhaust Type	REAR
Weight	350 g

Spec Tech



KEEP.21M



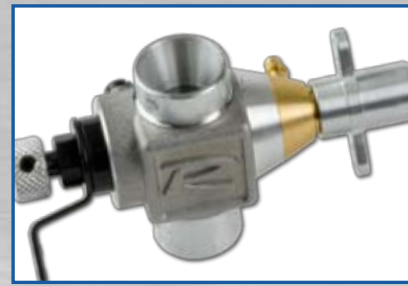
The sleeve has 9 transfer ports and an exhaust with booster ports. The special shape and positioning of the ports, covered by a patent, improve the internal fluid-dynamics to obtain the maximum possible performance.



The crankshaft is grinded to increase the mixture flow and has a special shape to reduce turbulences inside the crankcase. The balancing is done by 3 inserts made of tungsten alloy and the inlet has a silicon filling to reduce the weight of the crankshaft to improve acceleration.



The rear ball bearing has high quality ceramic balls to minimize wear and inertia to improve acceleration and fuel consumption.



This engine comes with a carburettor that enables on-board mixture adjustments.



The rear cover presents a round shape to optimize the filling and reducing the dead spaces. The steel plate reduced friction and expands the lifespan of the conrod.

Manifolds and Pipes Recommended



40040
Sanded Manifold for 3,5cc - 4,66cc engines.



40041
Polished manifold for 3,5/4,66cc engines.



40042
Polished Marine curved 180°.



40043
Watercooled manifold polished and conic for TOP 3,5cc engines.



C.20.23
Polished manifold curved 90° for 3,5/4,66cc engines.



C.20.23A
Sanded Manifold curved 90° for 3,5/4,66cc engines.



50040
Tuned pipe without silencer for 3,5cc engines.



50041
Tuned pipe with silencer for 3,5cc engines.



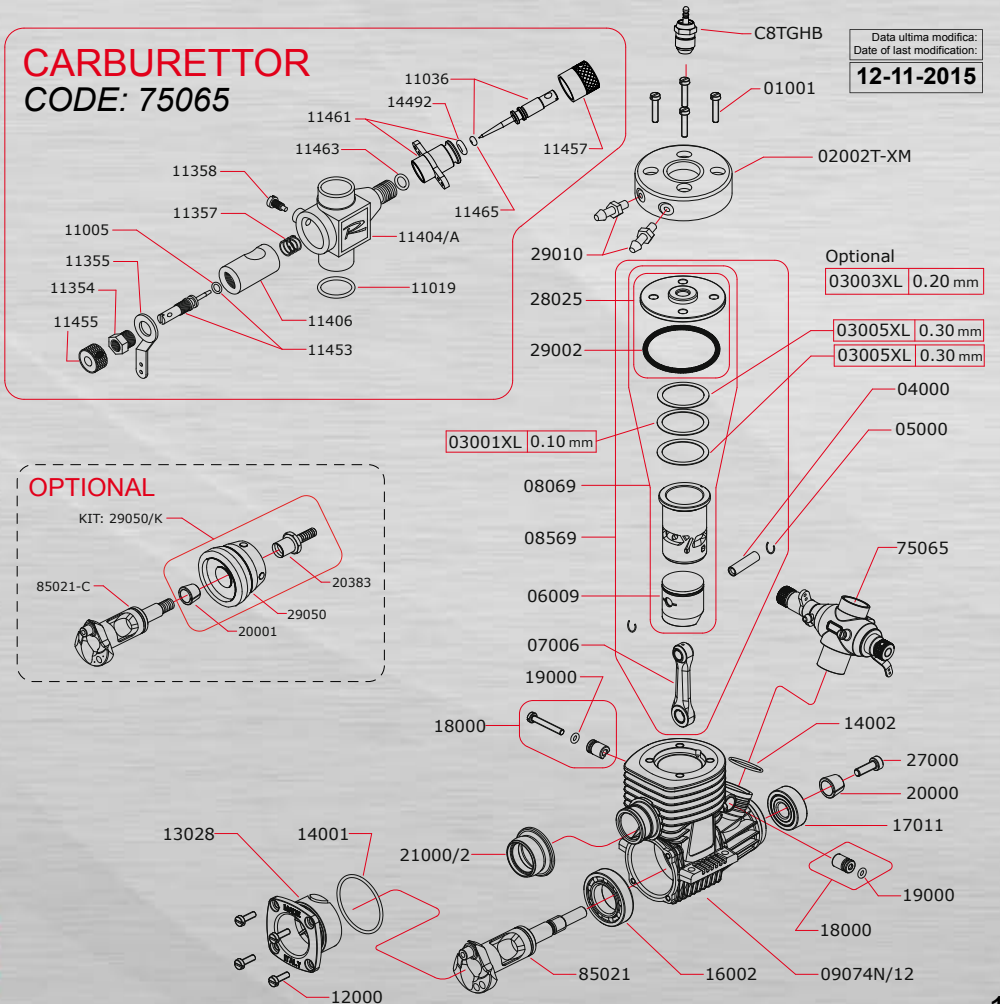
50042
Super silenced tuned-pipe for 3,5cc engines.



50050
Silenced Tuned pipe for 3,5cc TOP engines.

Exploded View

CARBURETTOR CODE: 75065



KEEP.ZIM



3,5cc MARINE ENGINE



Displacement	3,50 cc
Max Power R.P.M.	/
Practical Range	/
Bore x Stroke (mm.)	15,88 x 17,60
Sleeve n. ports	9
Rear Ball Bearing (Ball Type)	CERAMIC
Front Ball Bearing (Ball Type)	STEEL
Carburettor Type	9 mm - ROTARY
Carburettor Material	ALUMINIUM
Carburettor Adjustment	ON-BOARD
Glowplugs	C8TGH
Exhaust Type	REAR
Weight	407 g

Spec Tech



KEEP-21M DIRECT DRIVE



The sleeve has 9 transfer ports and an exhaust with booster ports. The special shape and positioning of the ports, covered by a patent, improve the internal fluid-dynamics to obtain the maximum possible performance.



The crankshaft is grinded to increase the mixture flow and has a special shape to reduce turbulences inside the crankcase. The balancing is done by 3 inserts made of tungsten alloy and the inlet has a silicon filling to reduce the weight of the crankshaft to improve acceleration.



The rear ball bearing has high quality ceramic balls to minimize wear and inertia to improve acceleration and fuel consumption.



The conrod is made from a superlight aluminum which has been checked ultrasonic. The specific form of the conrod creates little turbulence inside the engine while running.



Kit Direct Drive.

Manifolds and Pipes Recommended



40043
Polished manifold 15°, conical, with cooling.



40045
Polished manifold 5°, conical, with cooling.

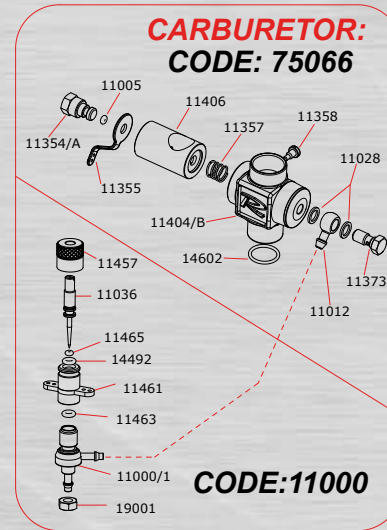


40046
Polished manifold 5°, conical.

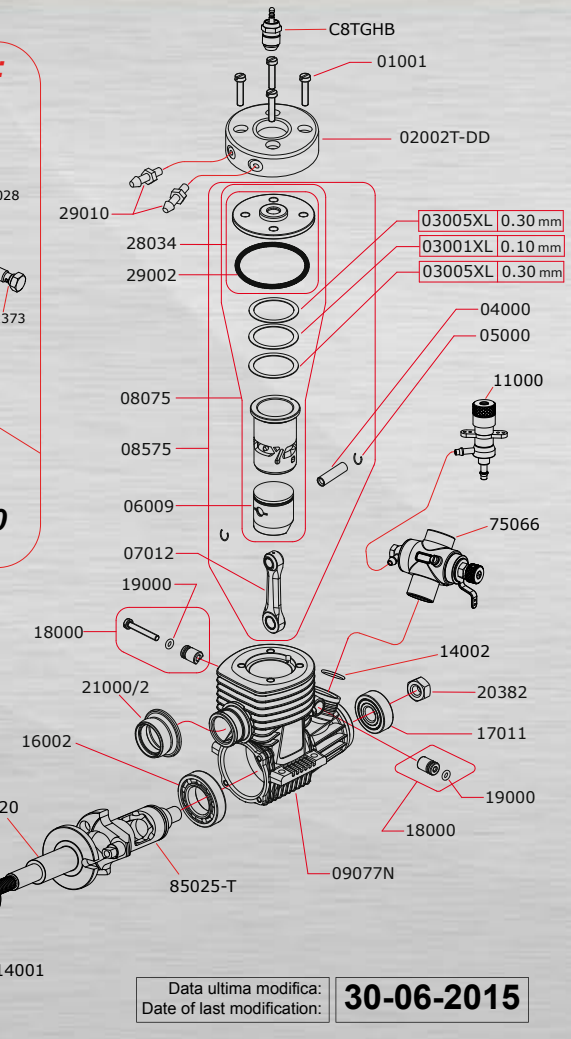


50050
Silenced Tuned pipe for 3,5cc TOP engines.

Exploded View



- Optional
- 03003XL 0.20mm
- Also available:
- C7G standard gold
 - 28035 standard



Data ultima modifica:
Date of last modification: **30-06-2015**

KEEP.ZIM-DD



3,5 CC MARINE ENGINE



Also available

Displacement	3,50 cc
Max Power R.P.M.	42.800
Practical Range	6.000 - 44.000
Bore x Stroke (mm.)	15,88 x 17,60
Sleeve n. ports	9
Rear Ball Bearing (Ball Type)	CERAMIC
Front Ball Bearing (Ball Type)	STEEL
Carburettor Type	9 mm - ROTARY
Carburettor Material	ALUMINIUM
Carburettor Adjustment	ON-BOARD
Glowplugs	C8TG8
Exhaust Type	REAR
Weight	430 g

Spec Tech

KEEP-21M OUT-BOARD





The sleeve has 9 transfer ports and an exhaust with booster ports. The special shape and positioning of the ports, covered by a patent, improve the internal fluid-dynamics to obtain the maximum possible performance.

The crankshaft is grinded to increase the mixture flow and has a special shape to reduce turbulences inside the crankcase. The balancing is done by 3 inserts made of tungsten alloy and the inlet has a silicon filling to reduce the weight of the crankshaft to improve acceleration.

The rear ball bearing has high quality ceramic balls to minimize wear and inertia to improve acceleration and fuel consumption.

This engine comes with a carburettor that enables on-board mixture adjustments.

Innovative head for out-board engines with air & water cooling.

Manifolds and Pipes Recommended



40044
Marine manifold for 3,5cc out-board engines.

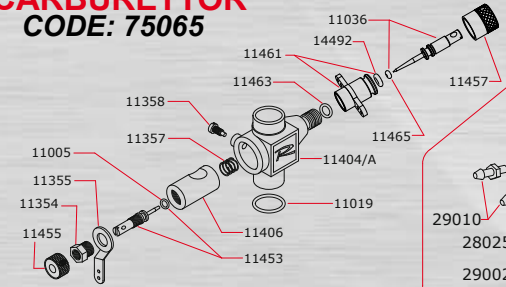


KEEP.21M OUT-BOARD

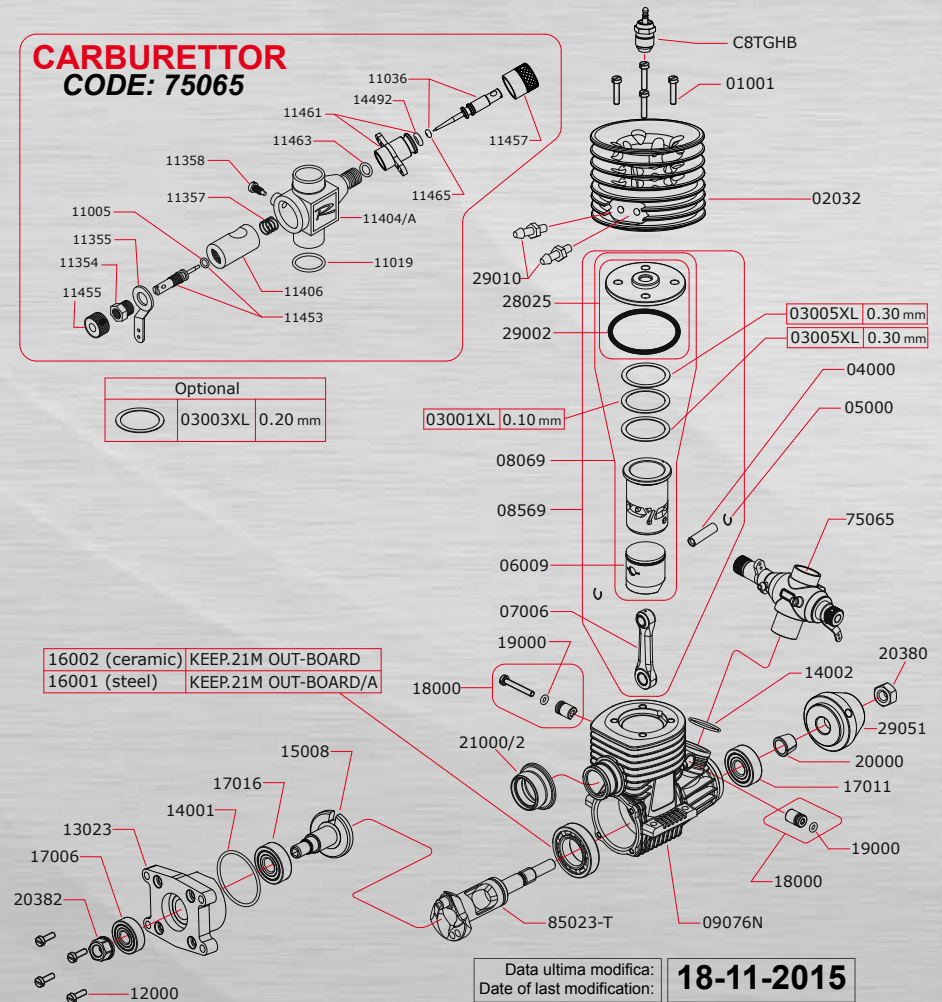


Exploded View

CARBURETTOR CODE: 75065



Optional	
	03003XL 0.20 mm



16002 (ceramic)	KEEP.21M OUT-BOARD
16001 (steel)	KEEP.21M OUT-BOARD/A

Data ultima modifica:
Date of last modification: **18-11-2015**

Tech Specs

Displacement	3,50 cc
Max Power R.P.M.	35.000
Practical Range	6.000 - 40.700
Bore x Stroke (mm.)	15,88 x 17,60
Sleeve n. ports	7
Rear Ball Bearing (Ball Type)	STELL
Front Ball Bearing (Ball Type)	STEEL
Carburettor Type	9 mm - ROTARY
Carburettor Material	ALUMINIUM
Carburettor Adjustment	ON-BOARD
Glowplugs	C6G
Exhaust Type	REAR
Weight	350 g

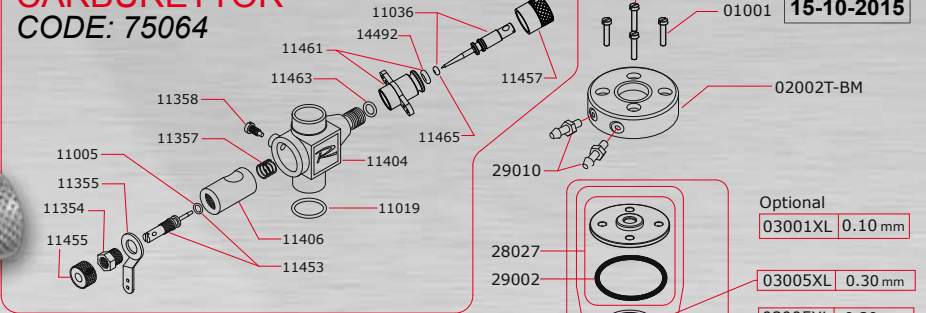
3.5 CC

Exploded view



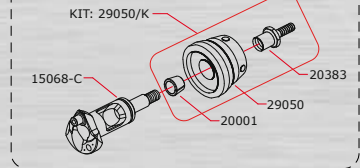
EXTRA LONG STROKE

CARBURETTOR
CODE: 75064

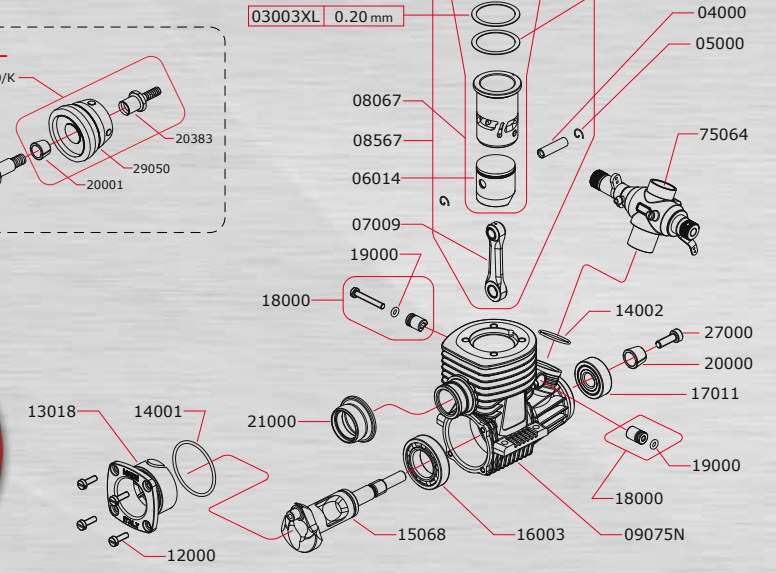


Data ultima modifica:
Date of last modification:
15-10-2015

OPTIONAL



Also available



BONITO.21M



40043
Watercooled manifold polished and conic for TOP 3,5cc engines.



40042
Polished Marine curved 180°.



50042
Super silenced tuned-pipe for 3,5cc engines.



50050
Silenced Tuned pipe for 3,5cc TOP engines.



Sleeve: The sleeve has 7 transfer ports and an exhaust with booster ports. The special shape and positioning of the ports, covered by a patent, improve the internal fluid-dynamics to obtain the maximum possible performance.



This piston is "microcasted", a technology developed by NOVAROSI, which is a perfect mix of low-weight and high strength with good resistance against high temperatures.



The crankshaft has a special shape to reduce turbulences inside the crankcase. The front part was extended to improve the seal against fuel leaking.

Manifolds and Tuned Pipes recommended



T35PLUS21M



Displacement	3,49 cc
Max Power R.P.M.	38.200
Practical Range	6.000 - 45.800
Bore x Stroke (mm.)	16,26 x 16,80
Sleeve n. ports	9
Rear Ball Bearing (Ball Type)	STEEL
Front Ball Bearing (Ball Type)	STEEL
Carburettor Type	9 mm - ROTARY
Carburettor Material	ALUMINIUM
Carburettor Adjustment	ON-BOARD
Glowplugs	C6TF
Exhaust Type	REAR
Weight	350 g

3.5 CC

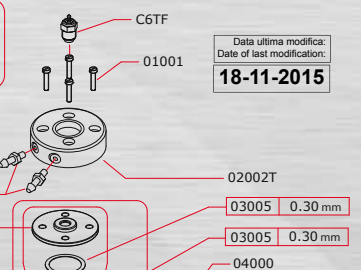
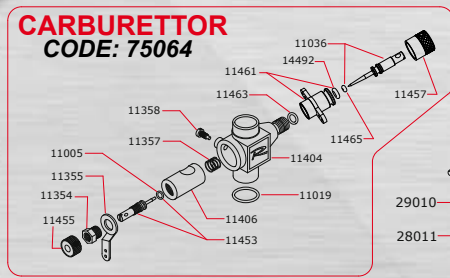
FLASH.21M



Displacement	3,50 cc
Max Power R.P.M.	38.100
Practical Range	6.000 - 43.500
Bore x Stroke (mm.)	16,26 x 16,80
Sleeve n. ports	9
Rear Ball Bearing (Ball Type)	CERAMIC
Front Ball Bearing (Ball Type)	STEEL
Carburettor Type	9 mm - ROTARY
Carburettor Material	ALUMINIUM
Carburettor Adjustment	ON-BOARD
Glowplugs	C6G
Exhaust Type	REAR
Weight	340 g



Also available



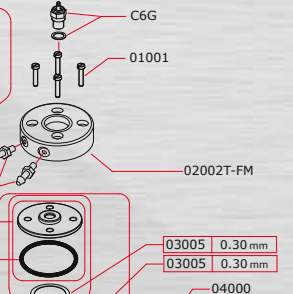
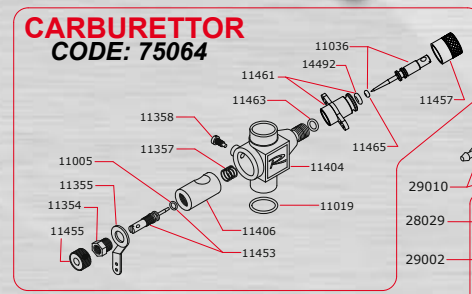
Optional

03002	0.15 mm
03003	0.20 mm
03004	0.25 mm

13014	Cooled rear cover
-------	-------------------

Also available:

	C6G standard gold
	28021 standard

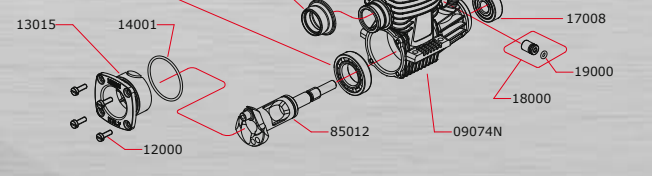
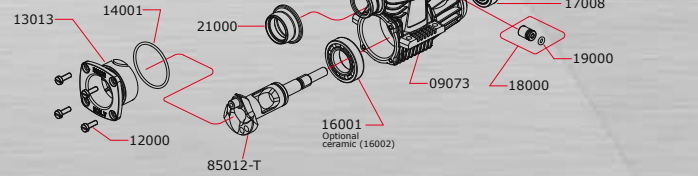


Optional

03002	0.15 mm
03003	0.20 mm
03004	0.25 mm

Data ultima modifica: 18-11-2015
Date of last modification:

16001 (steel)	Flash.21M/A
16002 (ceramic)	Flash.21M



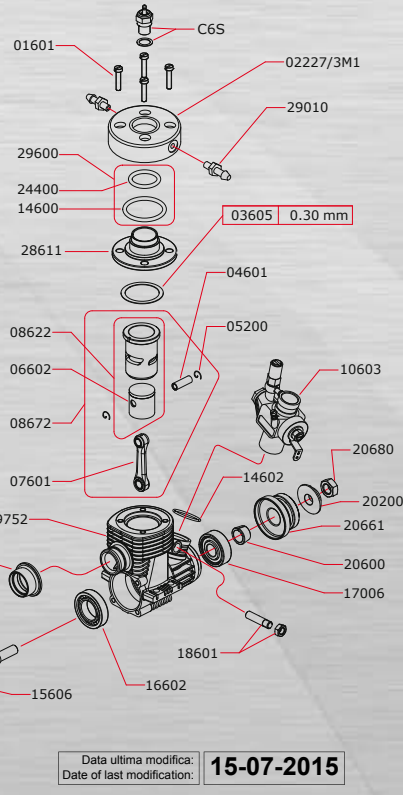
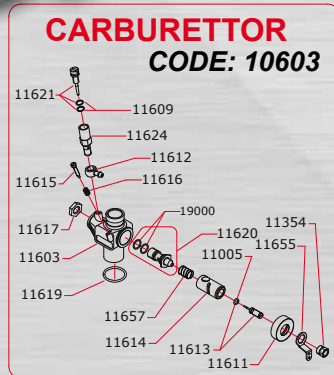


Displacement	2,10 cc
Max Power R.P.M.	41.000
Practical Range	6.000 - 42.000
Bore x Stroke (mm.)	13,80 x 14,04
Sleeve n. ports	3
Rear Ball Bearing (Ball Type)	STEEL
Front Ball Bearing (Ball Type)	STEEL
Carburettor Type	5,4mm - ROTARY
Carburettor Material	ALUMINIUM
Carburettor Adjustment	SINGLE
Glowplugs	C6S
Exhaust Type	REAR
Weight	205 g

2.1 CC



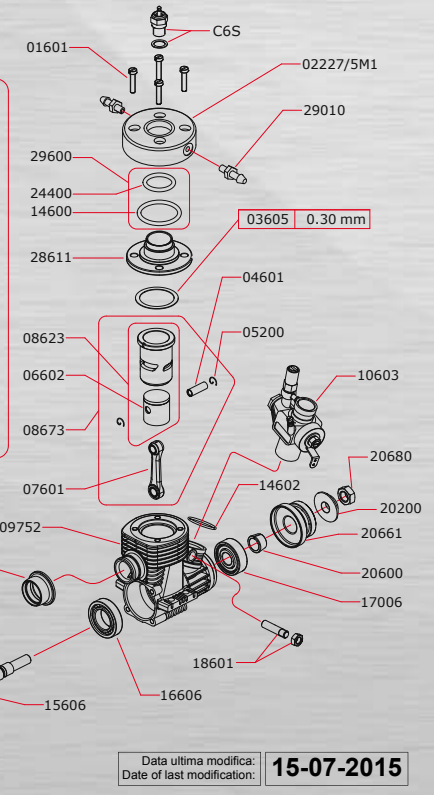
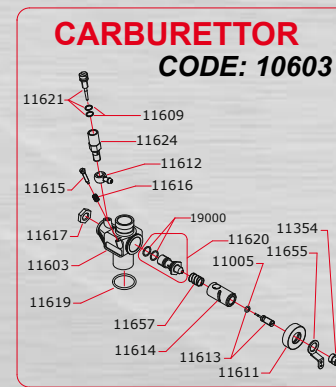
Displacement	2,10 cc
Max Power R.P.M.	41.800
Practical Range	6.000 - 42.100
Bore x Stroke (mm.)	13,80 x 14,04
Sleeve n. ports	5
Rear Ball Bearing (Ball Type)	STEEL
Front Ball Bearing (Ball Type)	STEEL
Carburettor Type	5,4mm - ROTARY
Carburettor Material	ALUMINIUM
Carburettor Adjustment	SINGLE
Glowplugs	C6S
Exhaust Type	REAR
Weight	205 g



Optional	
	03601 0.10 mm
	03602 0.15 mm

Data ultima modifica:
Date of last modification: **15-07-2015**

Also available



Optional	
	03601 0.10 mm
	03602 0.15 mm

Data ultima modifica:
Date of last modification: **15-07-2015**

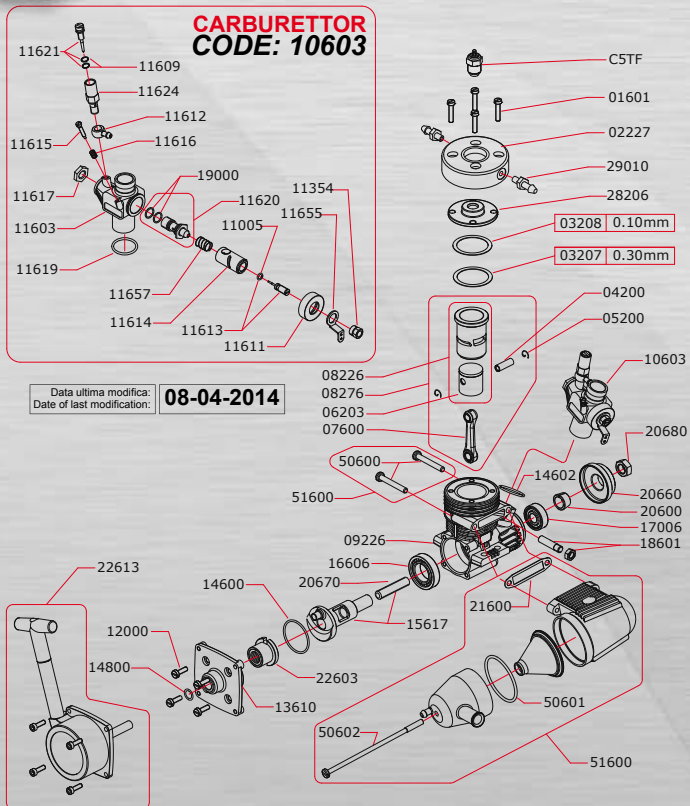


T-MX15PR

2.5 CC



Displacement	2,49 cc
Max Power R.P.M.	40.000
Practical Range	6.000 - 40.800
Bore x Stroke (mm.)	14,90 x 14,25
Sleeve n. ports	5
Rear Ball Bearing (Ball Type)	STEEL
Front Ball Bearing (Ball Type)	STEEL
Carburettor Type	5,4mm - ROTARY
Carburettor Material	ALUMINIUM
Carburettor Adjustment	SINGLE
Glowplugs	C6TF
Exhaust Type	SIDE
Weight	240 g

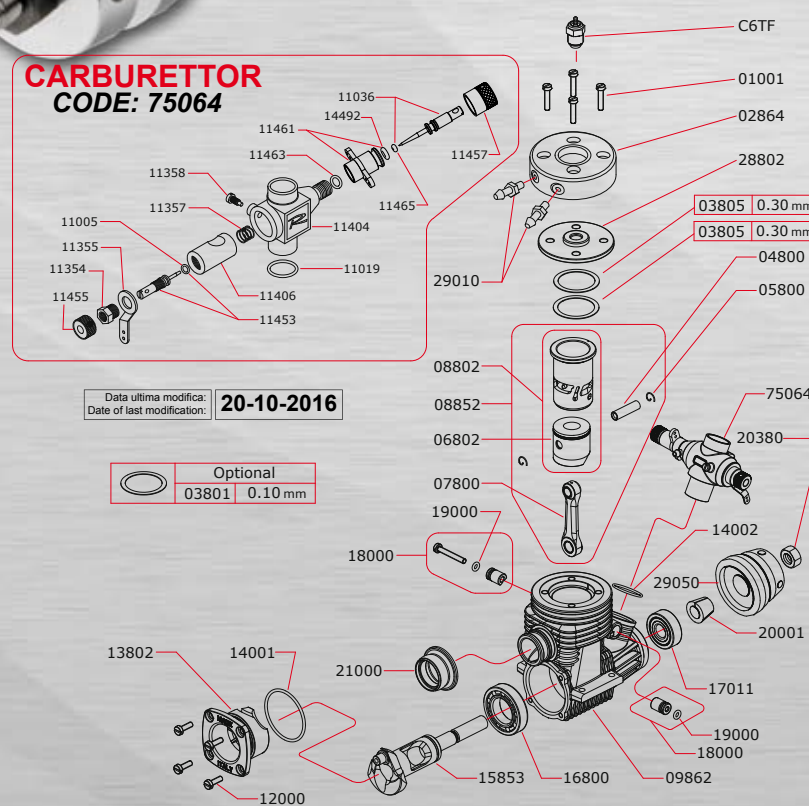


T528MS2

4.66 CC



Displacement	4,66 cc
Max Power R.P.M.	34.000
Practical Range	2.000 - 39.800
Bore x Stroke (mm.)	18,35 x 17,60
Sleeve n. ports	8
Rear Ball Bearing (Ball Type)	STEEL
Front Ball Bearing (Ball Type)	STEEL
Carburettor Type	9 mm - ROTARY
Carburettor Material	ALUMINIUM
Carburettor Adjustment	ON-BOARD
Glowplugs	C6TF
Exhaust Type	REAR
Weight	340 g



T21-5M



Displacement	3,49 cc
Max Power R.P.M.	38.000
Practical Range	6.000 - 44.000
Bore x Stroke (mm.)	16,26 x 16,80
Sleeve n. ports	5
Rear Ball Bearing (Ball Type)	STEEL
Front Ball Bearing (Ball Type)	STEEL
Carburettor Type	9 mm - ROTARY
Carburettor Material	ALUMINIUM
Carburettor Adjustment	ON-BOARD
Glowplugs	C6S
Exhaust Type	REAR
Weight	300 g

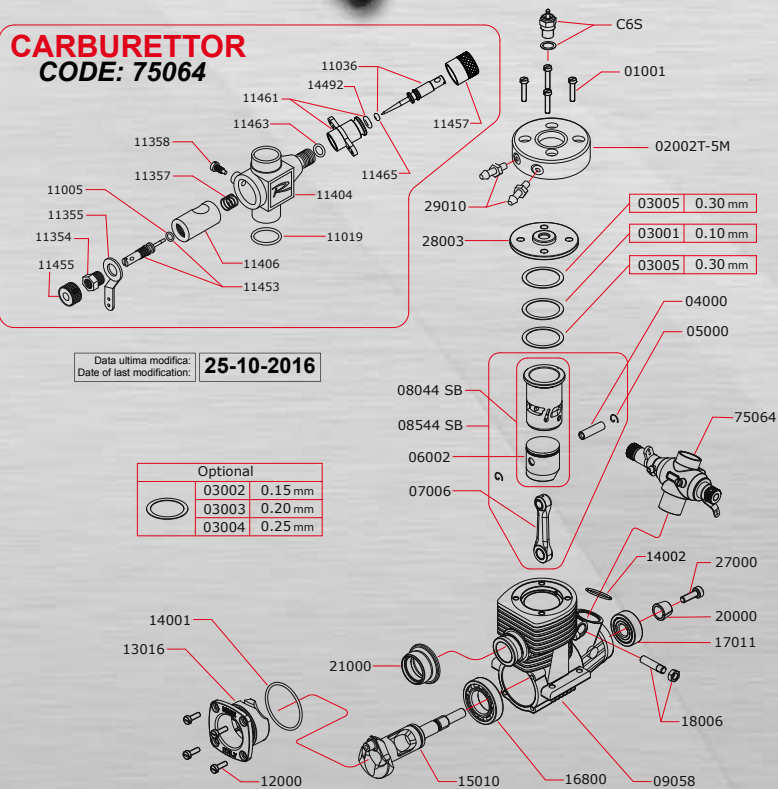
3.5 CC

T21-5M/2

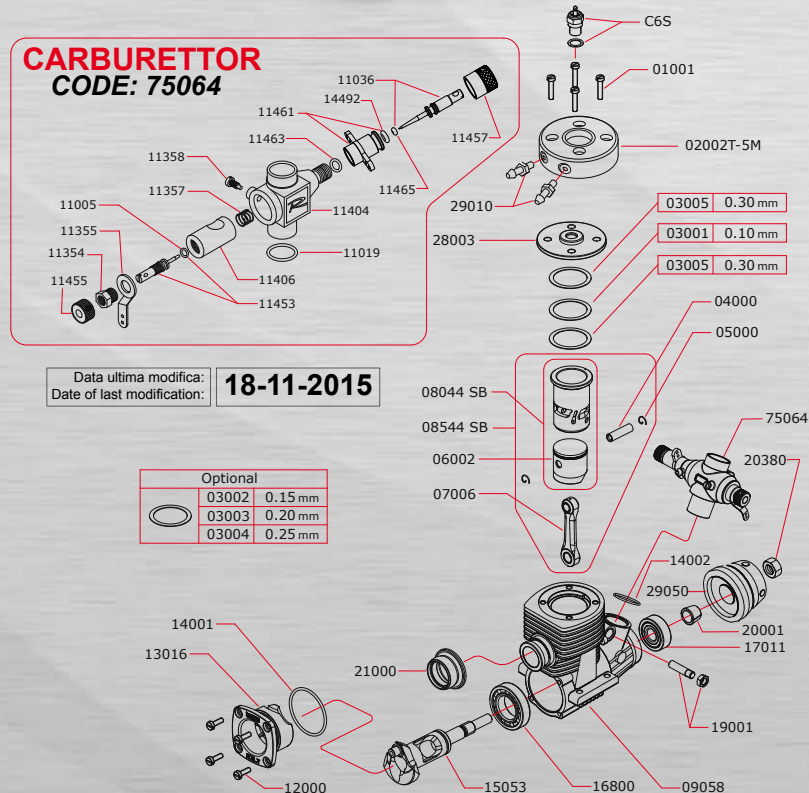


Displacement	3,49 cc
Max Power R.P.M.	38.000
Practical Range	6.000 - 44.000
Bore x Stroke (mm.)	16,26 x 16,80
Sleeve n. ports	5
Rear Ball Bearing (Ball Type)	STEEL
Front Ball Bearing (Ball Type)	STEEL
Carburettor Type	9 mm - ROTARY
Carburettor Material	ALUMINIUM
Carburettor Adjustment	ON-BOARD
Glowplugs	C6S
Exhaust Type	REAR
Weight	300 g

CARBURETTOR CODE: 75064



CARBURETTOR CODE: 75064



TOP ENGINES



T21-7M



Displacement	3,49 cc
Max Power R.P.M.	38.200
Practical Range	6.000 - 45.000
Bore x Stroke (mm.)	16,26 x 16,80
Sleeve n. ports	7
Rear Ball Bearing (Ball Type)	STEEL
Front Ball Bearing (Ball Type)	STEEL
Carburettor Type	9 mm - ROTARY
Carburettor Material	ALUMINIUM
Carburettor Adjustment	ON-BOARD
Glowplugs	C6S
Exhaust Type	REAR
Weight	300 g

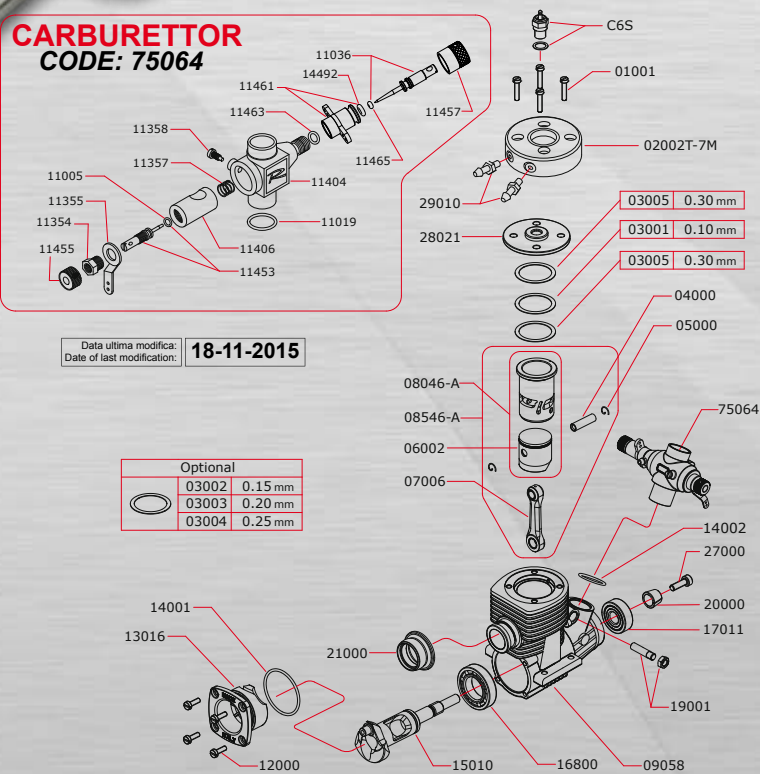
3.5 CC

T21-7M/2

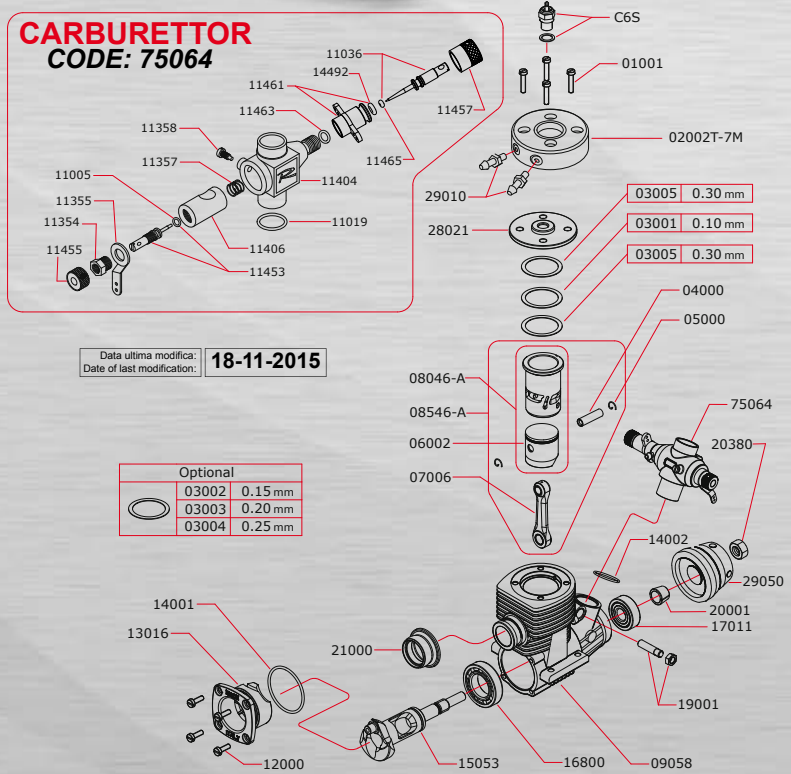


Displacement	3,49 cc
Max Power R.P.M.	38.200
Practical Range	6.000 - 45.000
Bore x Stroke (mm.)	16,26 x 16,80
Sleeve n. ports	7
Rear Ball Bearing (Ball Type)	STEEL
Front Ball Bearing (Ball Type)	STEEL
Carburettor Type	9 mm - ROTARY
Carburettor Material	ALUMINIUM
Carburettor Adjustment	ON-BOARD
Glowplugs	C6S
Exhaust Type	REAR
Weight	300 g

CARBURETTOR
CODE: 75064



CARBURETTOR
CODE: 75064



Performance





Novarossi Glowplugs

*"The best gift you can give
your engine."*

...50 years
of success.



Via Europa 20/A 25040 Monticelli Brusati (BS) Italy Tel. +39.030.6850316 - Fax. +39.030.6850314 - info@novarossi.it - www.novarossi.com



STANDARD SPECIAL

- C1S - Special Ultra Hot
- C2S - Special Extra Hot
- C3S - Special Very Hot
- C4S - Special Hot
- C5S - Special Medium
- C6S - Special Cold (25% Nitro)
- C7S - Special Very Cold (over 25% Nitro)
- C8S - Special Extra Cold (over 25% Nitro)
- C9S - Special Ultra Cold (over 25% Nitro)



STANDARD SPECIAL GOLD

- C4G - Gold Special Hot
- C5G - Gold Special Medium
- C6G - Gold Special Cold
- C7G - Gold Special Very Cold



CONICAL TURBO BURNISHED

- C5TGH - ambient temp. 0°C/10°C
- C6TGH - ambient temp. 5°C/25°C
- C6TGF - ambient temp. 10°C/40°C
- C7TGH - ambient temp. 0°C/40°C
- C8TGH - ambient temp. 10°C/40°C
- C9TGH - ambient temp. over 30°C or
higher quantities of nitromethane

CONICAL TURBO T-LINE

LONG LIFE

- C6TGT - ambient temp. 10°C/40°C
- C8TGT - ambient temp. 10°C/40°C



CONICAL TURBO

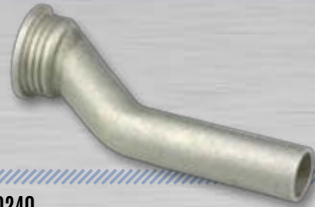
- C5TF - Conical Turbo Hot
- C6TF - Conical Turbo Medium
- C7TF - Conical Turbo Cold



MANIFOLDS



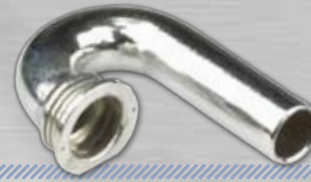
FOR 2.5 CC



40240
Sanded Manifold for 2,5cc engines.

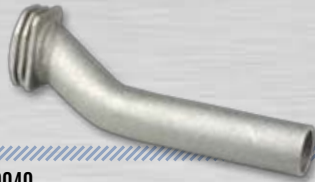


40241
Sanded Manifold for 2,5cc engines.



40242
Polished Manifold 180° for 2,5cc engines.

FOR 3.5 CC 4,66 CC



40040
Sanded Manifold for 3,5cc - 4,66cc engines.



40041
Polished manifold for 3,5/4,66cc engines.



40042
Polished Marine curved 180°.



40043
Watercooled manifold polished and conic for TOP 3,5cc engines.



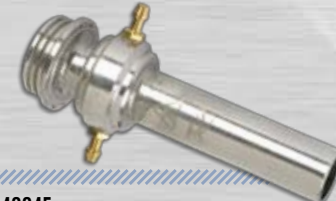
C.20.23
Polished manifold curved 90° for 3,5/4,66cc engines.



C.20.23A
Sanded Manifold curved 90° for 3,5/4,66cc engines.



40044
Marine manifold for 3,5cc out-board engines.



40045
Polished manifold 5°, conical, with cooling.



40046
Polished manifold 5°, conical.

FOR 7.5 CC



40900
Watercooled manifold polished and conic for 7,5cc TOP engines.

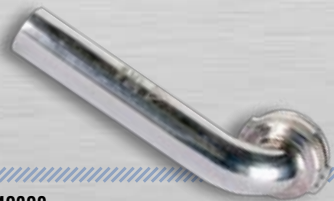


40901
Watercooled manifold polished curved 180° for 7,5cc TOP engines.



40902
Polished manifold curved 180° for 7,5cc TOP engines.

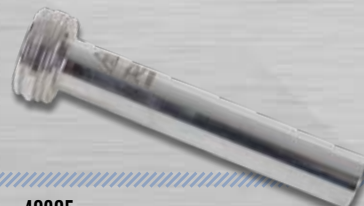
FOR 10/15 CC



40903
Polished manifold R46 curved 90°.



40904
Polished manifold R46 curved 15°.



40905
Polished manifold R46 curved 5°.



40494
Polished manifold for .67/.91 curved 10° with cooling.



40493
Polished manifold for .67/.91 curved 10° without cooling.

FOR 2 1/2 5 CC



50240
Tuned pipe with silencer for 2,5cc engines.



51600
Sunded tuned pipe for 2,1cc side exhaust.

FOR 3.5 CC



50040
Tuned pipe without silencer for 3,5cc engines.



50041
Tuned pipe with silencer for 3,5cc engines.



50042
Super silenced tuned-pipe for 3,5cc engines.



50050
Silenced Tuned pipe for 3,5cc TOP engines.



50054
Tuned pipe super silenced with cooling for 3.5cc marine engines.

FOR 7.5 CC



50900
Silenced tuned pipe for 7,5cc TOP engines.



50901
Tuned pipe for 7,5cc TOP engines.



50902
Super silenced tuned pipe with cooling.



50903
Tuned pipe without silencer for To-Be.46 engines, first cone 25 mm. less than 50901 pipe.

FOR 11/15 CC



50496
Tuned pipe without silencer, with cooling.



50495
Tuned pipe without silencer, without cooling.



50494
Tuned pipe without silencer, without cooling, 38mm less than 50495-50496.



1M1
Oil for engine
maintance.
(50ml)



1M2
Synthetic Oil for engine
maintance (50ml).



1N1
"Extra" castor oil to
use in fuel blends. (1lt.)



1T2
"Turbo 2" full-synthetic
oil to use in fuel blends.
(1lt.)



1T3
"Turbo 3" semi-synthetic oil
to use in fuel mixtures. (1lt.)



22900
Kit 7,5cc to transform To-be.46 into To-Be.46 Direct Drive.



29050/K
Kit for change engines transmission from "gear" to "direct" in the Mito.21M, Keep.21M and Bonito.21M.
Flywheel cod. 29050 / Cone cod. 20001 / Locking nut flywheel cod. 20383



29650/K
Kit for change engines transmission from "gear" to "direct" in the .12 engines.
Flywheel cod. 29650 / Cone cod. 20001 / Locking nut flywheel cod. 20383



39372
Bearing installation tool for $\varnothing 16\text{mm}$ bearings in R46 engines.



39600
Bearing installation tool for $\varnothing 11\text{mm}$ bearings in 2,1 cc engines.

39601
Bearing installation tool for $\varnothing 11,5\text{mm}$ bearings in 2,1cc engines.

39000
Bearing installation tool for $\varnothing 13\text{mm}$ bearings in 2,5cc and 3,5cc engines.

39001
Bearing installation tool for $\varnothing 14\text{mm}$ bearings in 2,5/3,5/4,66 cc engines.

39002
Bearing installation tool for $\varnothing 14,5\text{mm}$ bearings in 3,5cc and 4,66cc engines.



39609
Ball Bearing Extractor
set for 2,1cc engines.
ø 11 - 11,5 - 11,9.



39014
Ball Bearing Extractor
set for 2,5/3,5/4,66 cc
engines.
ø 13 - 14 - 14,5.



39015
Complete Ball Bearing
Extractor set for
2,1/2,5/3,5/4,66 cc engines.



39023
Blue Extractor Set for Keep.21M Direct Drive Cover Ball Bearing ø8.



02902
Headless cooling for To-Be.46 engines.



39371
Ballbearing extractor kit for our TOP To-Be.46 engine, Direct Drive and Out-Board. \varnothing 16 mm.



36000
Exhaust Gas Cooler to increase runtime on 1 fuel tank. Useable with all engines.



35000
1 meter long super strong silicon fuel tube.



39011
Digital tachometer for contact and photo measurements.



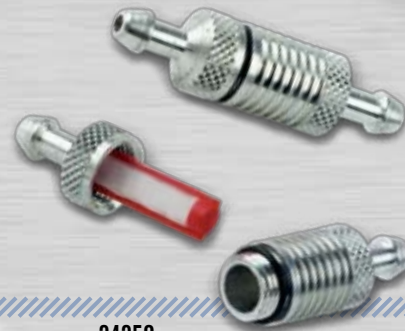
38000
Infrared (non contact) engine temperature measurement system.



39012
Analog NOVAROSSO
WORLD caliber.



39010
Digital NOVAROSSO
WORLD caliber.



34350
"Long" fuel filter made from
aluminium, rebuildable.



23001
Pipe silicone
joint 3,5/8,3cc.



23200
Pipe silicone
joint 2,1/2,5cc.



29062
Test and Run-in set.



13014
Cooled Rear Cover for Crankcase Marine 3,5cc
Long Stroke Rear Exhaust \varnothing 26,20mm.



25001
Demountable Brass
intake.



25000
Brass Intake
M4x0,5mm Hex 6mm.



25010
Aluminium support
for aerial tube.



6/03P
NOVAROSSİ WORLD short sleeve polo made from pure cotton.
Printed logos on front and back.



6/22P
Blue shirt, short sleeve, plain colour with embroidered brand.



6/19P
NOVAROSSİ WORLD fleece with 2 pockets (with zip closure) and on the back the 3 logos.



6/45P
NOVAROSSİ WORLD sweater with long sleeves and embroidered logos.



6/47P
NOVAROSSİ WORLD Blue 'Cardiff' bodywarmer with embroidered logos on both sides.



6/48P
NOVAROSSİ WORLD Husky with long sleeves with embroidered logos on both sides. Made from microfibers.

Front



Rear



6/53P
Blue t-shirt, 27th anniversary, with printed brand.

Front



Rear



6/23P
White T-shirt, short sleeve, with printed brand, 30th anniversary



6/14P
T-Shirt DAMIER. Short Sleeve, with printed brand, 100% cotton, made in Italy.



6/15P
T-Shirt DAMIER. Short sleeve with printed brand, 100% cotton, made in Italy.



6/51P
Woman top DAMIER. with printed brand, 100% cotton, made in Italy.



6/32P - On-road
 Transpiring waterproof rain jacket plotter printed.
 100% resin treated polyester, with hood, 2 pockets,
 anti-slide Zip reflector, inner lining, made in Italy.

6/33P - Off-road
 Transpiring waterproof rain jacket plotter printed.
 100% resin treated polyester,
 with hood, 2 pockets, anti-slide
 Zip reflector, inner lining, made
 in Italy.



6/57P
 Long grey pants with zipper
 closure, six pockets, with em-
 broidered brand. A zipper to turn
 it in shorts.



6/13P
 Sport Jacket
 waterproof polyester,
 zipper and button closure,
 with embroidered brand.
 Folding and retractable
 hood, pockets with zip
 closure, adjustable cuffs
 with velcro.
 Detachable sleeves.



6/41P
 NOVAROSSO WORLD Lady
 top from 100% cotton
 and with printed logos
 on front/back.

6/01P



6/12P



Sneaker Shoes

- Waterproof paint, with embroidered brand
- Genuine leather and rubber sole
- Only upon request - made in Italy

6/11P



6/21P





6/06P
NOVAROSSO WORLD Keycord featuring the Italian tri-colore colours.



6/35P
Silver key ring, with printed brand.



6/36P
Golden plate lapel badge with printed brand.



6/07P
Aluminium engine holder for display use.



6/52P
Mechanic's apron, cotton/polyester, one size.



6/18P
NOVAROSSO WORLD 70x50cm pit-towel.



6/17P
Bag with zipper closer and printed brand on both sides (65x35x16cm).



6/02P
NOVAROSSO WORLD adjustable Marsupium.
Double pockets with zip closure.



6/58P
NOVAROSSİ patch (6x6cm)



6/29P
Red cap with
embroidered brand.



6/08P
Pen NOVAROSSİ WORLD.



6/61P
Blue shopper bag with print brand.



NOVAROSS WORLD S.r.l.

Via Europa 20/A
25040 Monticelli Brusati (BS)
ITALY

Tel: +39 030 6850316
Fax: +39 030 6850314

www.novarossi.it
info@novarossi.it
store.novarossi.it

MADE IN ITALY 

