

**ZENDURE**  
SuperCharged Ⓢ



# SuperBase V

True Power Independence

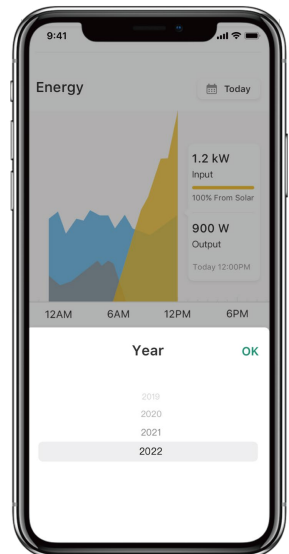
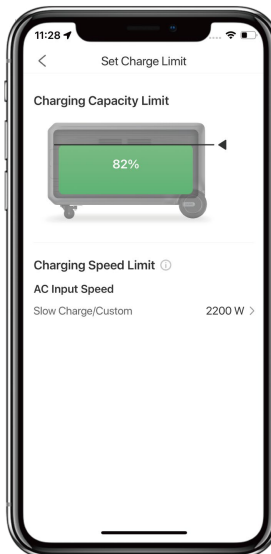
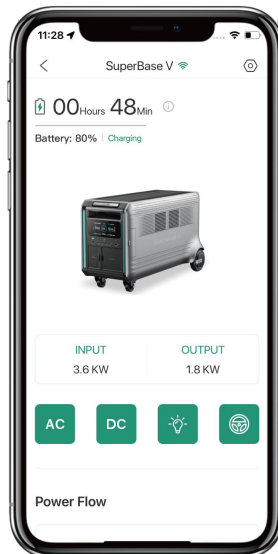
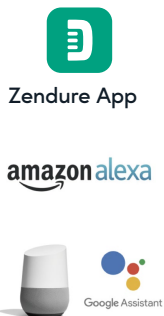
Portable Power Station



## SuperBase V

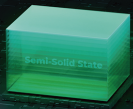
The First Plug-and-Play Home Energy Storage System

- ▶ Expandable for more energy storage
- ▶ Off-grid independence
- ▶ Save on energy consumption with time-of-use management through Zendure App
- ▶ Semi-solid state or LiFePO4 battery
- ▶ IoT intelligent voice control





**Semi-Solid State /  
LiFePO4 Batteries**



**6600W Max  
Dual Recharge**



**Dual Voltage  
Output in one unit**



**6.4 to 64kWh / 4.6 to 46kWh**  
Scalable Capacity



IoT Intelligent  
**Voice Control  
& APP Operate**



The industry's  
**fastest  
3,000W  
solar input**



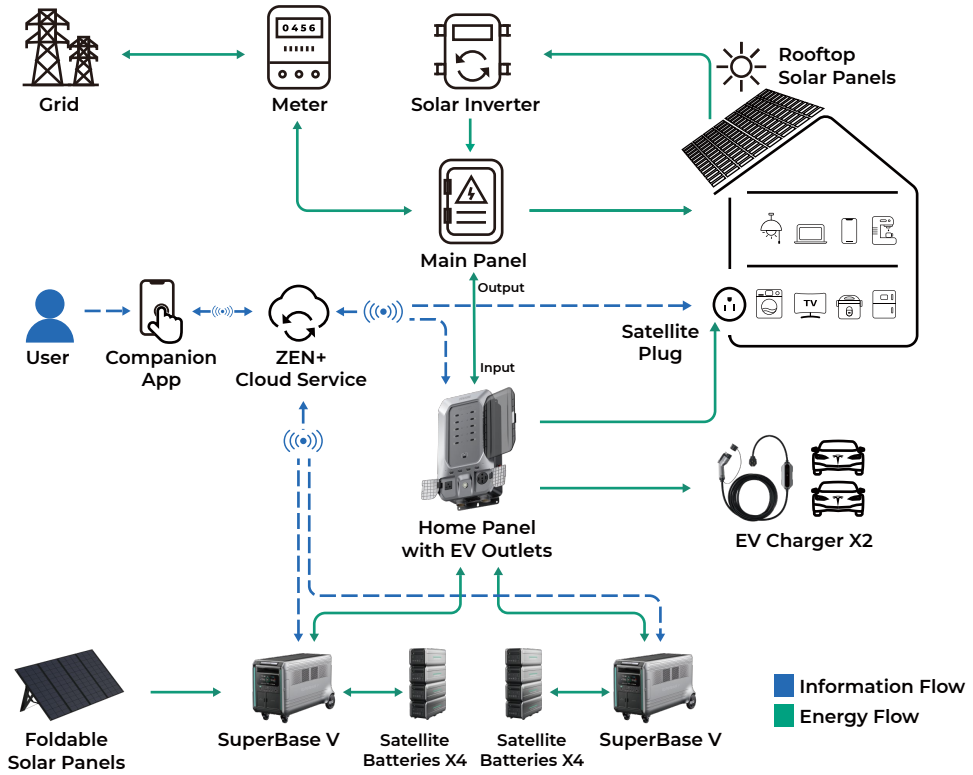
**3,800W to 7,600W**  
AC Output



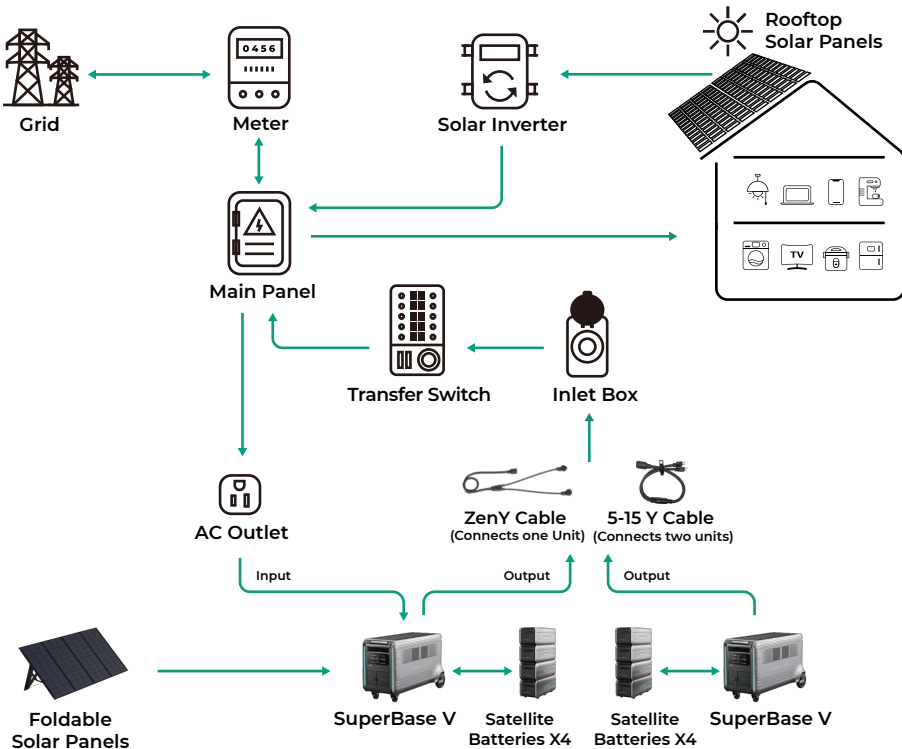
**Seamless UPS**  
(0ms/ <11ms)



# Home Energy Storage Systems



# Home Power Backup Solutions





## Starter Kit

### SuperBase V + 30 Amp Cable\* + Transfer Switch

- 240V/120V Dual Voltage, 3800W output
- Base unit 4.6/6.4 kWh capacity, expands from 4.6~32 kWh, for up to a week of power supply
- Plug and Play

Our simplest and most cost-effective way to deal with temporary power failures. Connect one SuperBase V to power inlet box or transfer switch\* to supply electricity to your essential circuits (lighting, Wi-Fi router, refrigerator) when there is a blackout.



## Advanced Kit

### 2\*SuperBase V + ZenY Cable + Transfer Switch

- Expands from 9.2/12.8 kWh to 46/64 kWh
- 240V/120V Dual Voltage, 7200W output
- Plug and Play

With the ZenY Cable, you can connect two Superbase V and power your whole house through your power inlet box\* or transfer switch. Powerful enough to run almost any home appliance, even high-wattage ones like a dryer (5000W). You can also extend your backup power by adding Extra Batteries and Solar Panels that can keep your essentials running for weeks.



## Smart Control Kit

### SuperBase V + Zendure Home Panel

- Expands from 4.6/6.4kWh to 46/64kWh
- 240V/120V Dual Voltage, 7200W output
- Comprehensive home power management

Uninterrupted backup power supply and smart power management. Take control of your energy and reduce your electricity bills with stored energy.



## Home Back Up Power



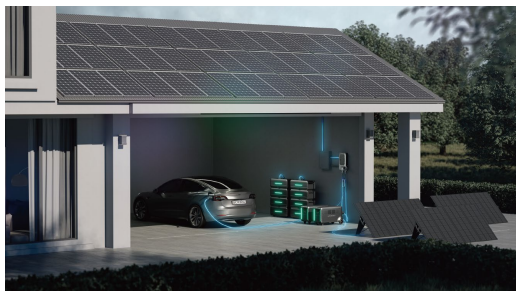
## Professional Usage



## RV/Off-grid Life



## Whole Home Energy Management



# Run Times



Hair Dryer  
1,600W



Microwave  
Oven 1,300W



Air Conditioner  
1,500W



Induction Cooker  
1,800W



Air Compressors  
1,000W



Cooktop  
2,400W



SuperBase  
V6400

3.6 H

4.5 H

4 H

3.2 H

5 H

2.4 H



SuperBase  
V4600

2.5 H

3 H

2.7 H

2 H

4 H

1.7 H



SuperBase V6400  
+  
Satellite Battery

7.5 H

9 H

8 H

6.5 H

12 H

5 H



SuperBase V4600  
+  
Satellite Battery

5 H

6.5 H

5.5 H

4.5 H

8 H

3 H



SuperBase V6400\*2  
+  
Satellite Battery\*8

37 H

45 H

39 H

32 H

59 H

24 H



SuperBase V4600\*2  
+  
Satellite Battery\*8

26 H

32 H

28 H

23 H

42 H

17 H

# Fully Charged Time

6,600W

LFP 2.3H

SSB 2.7H

AC + Solar Power + Satellite Battery

4,500W/ 5,150W

LFP 2H

SSB 2.2H

AC + Solar Power

3,600W

LFP 2.2H

SSB 2.5H

EV Charger

3,000W

LFP 2.5H

SSB 3H

Solar Charging

3,600W

LFP 2.2H

SSB 2.5H

AC Outlets 240V

1,800W

LFP 3H

SSB 4H

AC Outlets 120V

3,600W

LFP 2.2H

SSB 2.5H

Generator (240V)

1,800W

LFP 3H

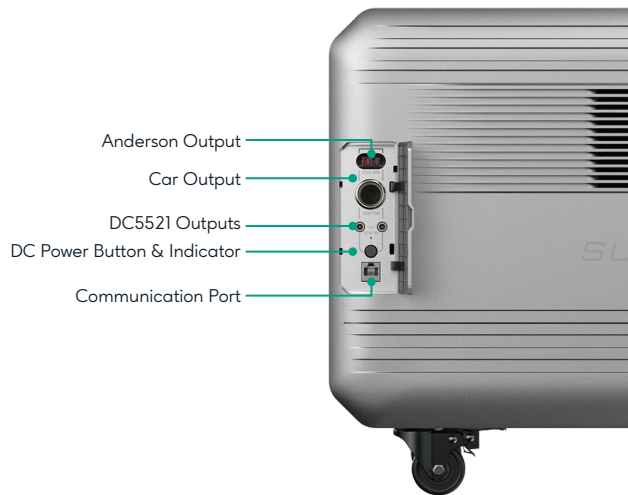
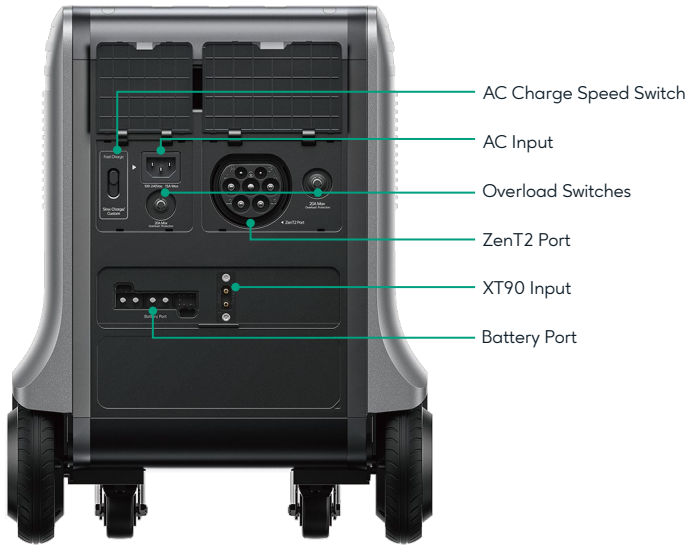
SSB 4H

Generator (120V)

LFP LiFePO4

SSB Semi-Solid State

# SuperBase V: 16 Ports



# Specifications

## SuperBase V



SuperBase V6400

SuperBase V4600

Capacity:

6,438Wh

4,608Wh

Battery Type:

Semi-Solid State

LiFePO4

AC Input:

NA: 120VAC 1,800W / 240VAC 3,600W, 15A Max  
 JP: 100VAC 1,500W / 200VAC 3,000W, 15A Max  
 EU/UK/AU: 230VAC 2,900W, 12.5A Max  
 CN: 220VAC 2,200W, 10A Max

XT90 Input:

12-150V=25A, 3,000W Max

ZenT2 Input:

NA: 100-240VAC, 3,600W Max (EV T1 Adapter needed)  
 JP: 100-200VAC, 3,000W Max (EV T1 Adapter needed)  
 EU/UK/AU: 230VAC, 3,600W Max  
 CN: 220VAC, 3,520W Max

Output:

1 x Car Outlet: 12.6V/10A Max  
 2 x DC5521: 12.6V/3A Max  
 1 x Andersen: 12.6V 30A  
 USB-C(1)/(2): 5V-20V, 100W Max Each  
 USB-C(3)/(4): 5V-12V, 20W Max Each  
 USB-C(1\2\3\4 Total 200W  
 USB-A(1) (2): 5V, 2.4A Total

NA: 4x 5-20: 120VAC, 15A  
 1x 6-20: 240VAC, 16A  
 1x TT-30: 120VAC, 30A

JP: 4x 5-20: 100VAC, 15A  
 1x 6-20: 200VAC, 16A  
 1x L5-30: 100VAC, 30A

4x EU/UK/AU: 230V~50Hz, 16A  
 2x 5-20: 115V~60Hz, 15A

CN: 1x CN16A: 220V~50Hz, 16A  
 3x CN10A: 220V~50Hz, 10A  
 2x 5-20: 110V~60Hz, 15A

Charge Temperature:

-20°C to 45 °C (-4 - 113 °F)

0°C to 45°C (32 - 113 °F)

Discharge Temperature:

-20°C to 45°C (-4 - 113 °F)

Dimensions:

28.7 x 13.6 x 17.4in (Including Wheels)

Weight

130lbs (59kg)

127lbs (57.8kg)



# Specifications

## Satellite Battery



SuperBase B6400



SuperBase B4600

Capacity:	6,438Wh	4,608Wh
Battery Type:	Semi-Solid State	LiFePO4
Dimensions:	69 x 28.5 x 27.4cm (27.2 x 11.2 x 10.8in)	
Weight:	101lbs (46kg)	98.7lbs (44.8kg)
XT90 Input:	12-150V = 10A, 600W Max	
USB-A:	Firmware Update	
Output:	1x Car Outlet: 12.6V~10A 1x Andersen: 12.6V~30A, 378W Max XT90: 12-60V, 10A, 600W Max (Configure in App)	

## Home Panel



Max # of Circuits:	10 (Single Phase) / 5 (Split Phase) or Mixed Configuration
Rated Relay Module Current:	20A x6, 30A x4
Input from Grid:	50A Max x2, 120V/240V
Input from SuperBase V:	7,600W (3,800W x2)
Circuits Load (Grid Mode):	50A Max, 6,000W @120V; 12,000W @240V
Circuits Load (Backup Mode):	7,600W Max
ZenX Port Charging SuperBase V:	7,200W Max (2x 3,600W @240V) 3,600W Max (2x 1,800W @120V)
EV Outlets (Grid Mode Only):	NEMA 14-50 40A Max, NEMA 6-20 16A Max, Total 50A
Dimensions:	28.5 x 11.9 x 49.2cm (11.2 x 4.7 x 19.4in)
Weight:	19.4lbs (8.8kg)
More:	Smart App Compatible

# ZENDURE

## SuperCharged ⚡

Founded in 2017, Zendure is one of the fastest-growing EnergyTech start-ups located in the technology hubs of Silicon Valley, USA, and the Greater Bay Area, China, Japan, and Germany.

Our purpose is to accelerate a sustainable future.

Our mission is to deliver reliable and affordable clean energy for households worldwide by popularizing the latest EnergyTech.

🌐 German site: <https://zendure.de/>

🌐 European site: <https://eu.zendure.de/>

🌐 US site: [http:// zendure.com](http://zendure.com)

### Contact us

Support: [support@zendure.com](mailto:support@zendure.com)

PR & Influencer: [pr@zendure.com](mailto:pr@zendure.com)

Distributors: [sales@zendure.com](mailto:sales@zendure.com)



[zendure.com](https://zendure.com)

ZD-SBV-YD-EN-NA-V02