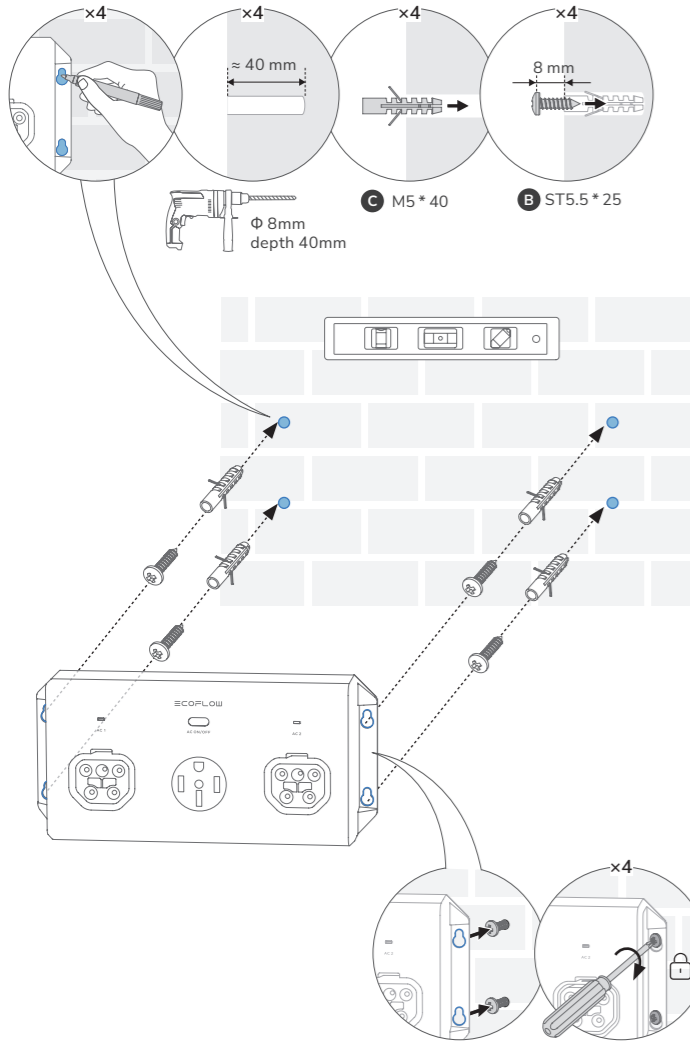


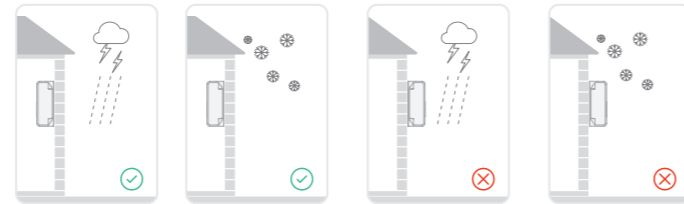
How To Install

安裝方式



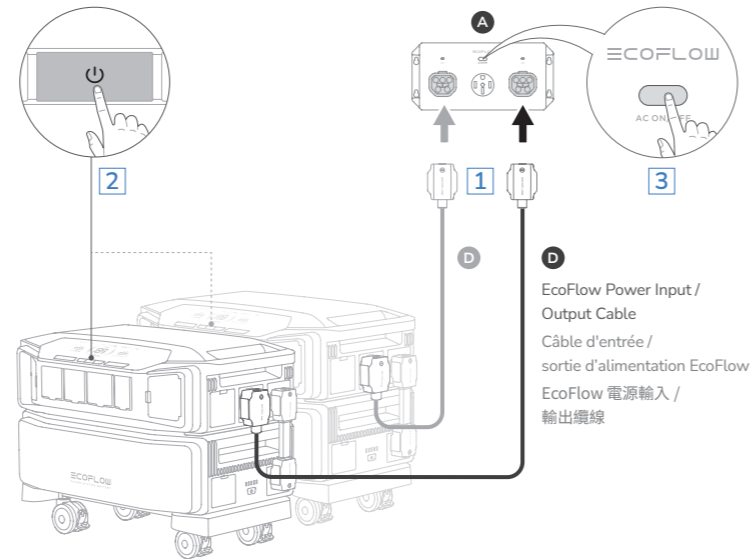
You can also mount the 50 amp hub in other places, but wall mounting is suggested. Vous avez également la possibilité de monter le concentrateur de 50 A à d'autres emplacements, bien que le montage mural soit recommandé. 您也可以在其他地方安裝 50 安培的集線器，但建議採用牆裝。

Keep the product indoors to avoid rain, snow or other such weather. Pour protéger l'appareil de la pluie, de la neige et des intempéries, gardez-le à l'intérieur. 將產品放在室內，以避免下雨、下雪或其他類似天氣。



How To Connect

Instructions de connexion | 連接方式



EcoFlow DELTA Pro Ultra

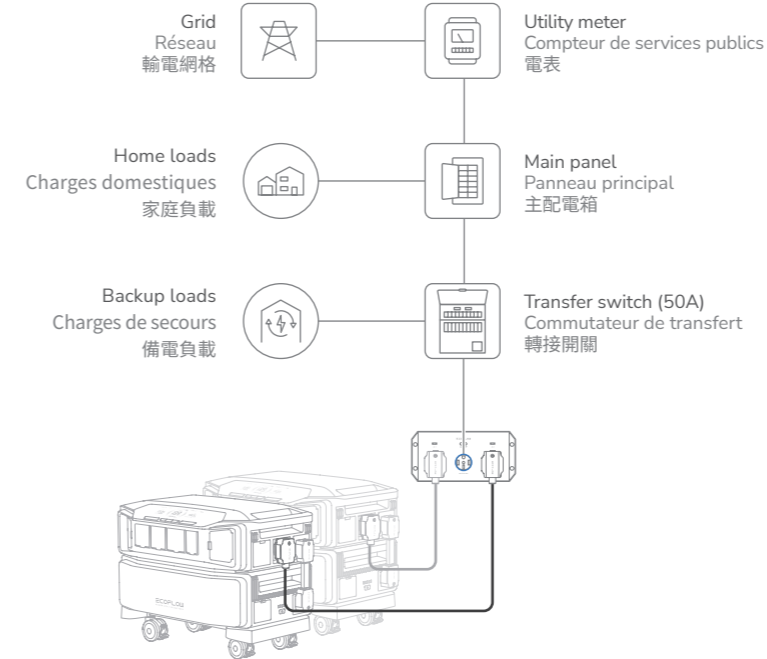
After EcoFlow DELTA Pro Ultra is turned on, press the power button on the 50 Amp Hub to connect; and press the power button again to disconnect. Après avoir mis EcoFlow DELTA Pro Ultra sous tension, appuyez une fois sur le bouton d'alimentation du concentrateur de 50 A pour établir la connexion. Appuyez de nouveau pour déconnecter l'appareil. EcoFlow DELTA Pro Ultra 開啟後，按下 50 安培集線器上的電源開關進行連接；再次按下電源開關即可中斷連接。

How To Use

Instructions d'utilisation | 使用方式

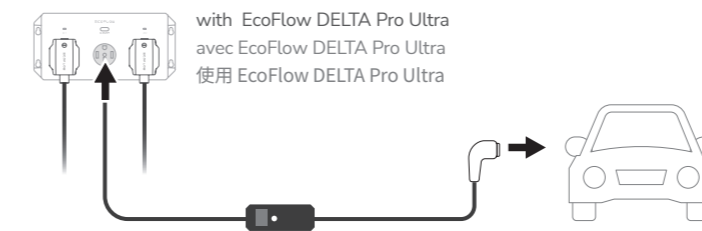
A Build a whole home backup system

Mise en place d'un système d'alimentation de secours pour toute la maison
打造整個家庭備份系統



B Charging your car

Recharge de votre voiture
為您的汽車充電



LED Indicator

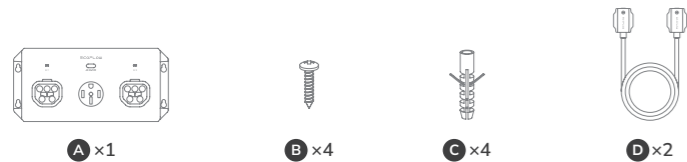
Indicateur LED | LED 指示燈

On | Fixes | 亮
 Blinks slowly | Clignotent lentement | 緩慢閃爍
 Off | Désactivé | 熄滅
 Blinks quickly | Clignotent rapidement | 快速閃爍

	AC1	AC2	Description
			Connecting La connexion est en cours 連接中
			Connection succeeded La connexion est réussie 連接成功
			Connection error Erreur de connexion 發生連接錯誤
			Connecting La connexion est en cours 連接中
			Connection succeeded La connexion est réussie 連接成功
			Connection error Erreur de connexion 發生連接錯誤
			Connecting La connexion est en cours 連接中
			Connection succeeded La connexion est réussie 連接成功
			Connection error Erreur de connexion 發生連接錯誤

What's In The Box

Contenu de l'emballage | 包裝清單



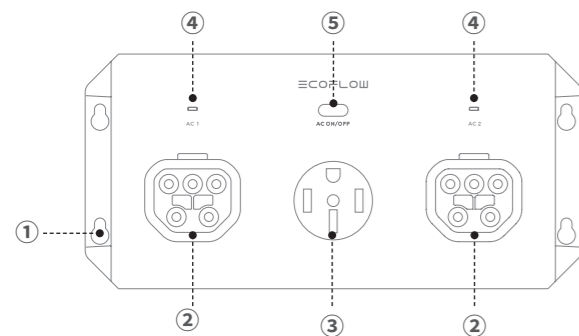
Tools needed (not in the box)

Outils nécessaires (non inclus dans l'emballage) | 所需工具 (不在包裝盒中)

Spirit level Niveau à bulle 水平儀	Drill Perceuse 電鑽	Marker Marqueur 劃線器	Screwdriver Tournevis 螺絲起子

Product Overview

Présentation du produit | 產品外觀



- | | | |
|------------|---------------------------------------|--------------------------------|
| EN | ① Drilling hole | ④ LED indicator |
| | ② Power input / output port | ⑤ AC on/off |
| | ③ AC output socket | |
| FR | ① Perçage de trous | ④ Indicateur LED |
| | ② Port d'entrée/sortie d'alimentation | ⑤ Mise sous/hors tension du CA |
| | ③ Prise de sortie CA | |
| CHT | ① 鑽孔 | ④ LED 指示燈 |
| | ② 電源輸入/輸出埠 | ⑤ 交流電開啟/關閉 |
| | ③ 交流輸出埠 | |

Specifications Spécifications | 規格

Model	EFYJ751-PR
Dimension	335*158.5*60.5mm/13.1*6.2*2.4 in
AC input	120/240V~ total 50A 60Hz 30A (x2) Max per port
AC output	120/240V~ 60Hz 12000W Max 50A Max
Operating temperature	-20°C-45°C (-4°F - 113°F)

Modèle	EFYJ751-PR
Dimensions	335 x 158,5 x 60,5 mm / 13,1 * 6,2 * 2,4 pouces
Entrée CA	120/240 V ~, 50 A au total, 60 Hz, 30 A max. par port (x 2)
Sortie CA	120/240 V ~, 60 Hz, 12 000 W max., 50 A max.
Température de fonctionnement	de -20 °C à 45 °C (de -4 °F à 113 °F)

機型	EFYJ751-PR
尺寸	335*158.5*60.5 公釐
交流輸入	120/240V~ 總 50A 60Hz, 每個連接埠最大 30A (2 個)
交流輸出	120/240V~60Hz, 最大 12000W, 最大 50A
操作溫度	-20°C-45°C

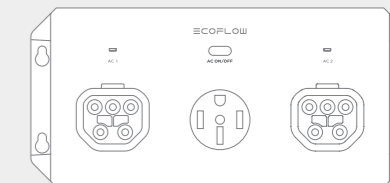
	CAUTION: Before using this product, please read this document carefully. ATTENTION : Avant d'utiliser ce produit, veuillez lire attentivement ce guide. 小心：使用本產品前，請仔細閱讀此文件。
	To ensure correct and safe installation and interconnection of the equipment, use a power cord connected to a socket-outlet with earthing connection. Pour garantir une installation et une interconnexion correctes et sécurisées de l'équipement, veuillez à utiliser un cordon d'alimentation connecté à une prise de courant avec mise à la terre. 為了確保設備的正確、安全安裝和互連，請使用連接到帶接地連接的插座的電源線。
	When input or output voltage is 240V, it represents a split phase: L1+L2+N+PE. Lorsque la tension d'entrée ou de sortie est de 240 V, cela correspond à une phase divisée : L1 + L2 + N + PE. 裂相電路中，如果輸出電壓或輸入電壓為 240V，需要用 L1, L2, N, PE 四根線。

	WARNING: Lithium-ion Batteries and/or products that contain Lithium-ion Batteries can expose you to chemicals including cobalt lithium nickel oxide, and nickel, which are known to the State of California to cause cancer and birth defects or other reproductive harm. For more information, go to www.P65Warnings.ca.gov WARNING: This product can expose you to Lead, which is known to the State of California to cause cancer and birth defects or other reproductive harm. For more information go to www.P65Warnings.ca.gov
FCC Warning	This device complies with part 15 of the FCC Rules. Operation is subject to the following two conditions: (1) This device may not cause harmful interference, and (2) this device must accept any interference received, including interference that may cause undesired operation. Any Changes or modifications not expressly approved by the party responsible for compliance could void the user's authority to operate the equipment. NOTE: This equipment has been tested and found to comply with the limits for a Class B digital device, pursuant to part 15 of the FCC Rules. These limits are designed to provide reasonable protection against harmful interference in a residential installation. This equipment generates uses and can radiate radio frequency energy and, if not installed and used in accordance with the instructions, may cause harmful interference to radio communications. However, there is no guarantee that interference will not occur in a particular installation. If this equipment does cause harmful interference to radio or television reception, which can be determined by turning the equipment off and on, the user is encouraged to try to correct the interference by one or more of the following measures: -Reorient or relocate the receiving antenna. -Increase the separation between the equipment and receiver. -Connect the equipment into an outlet on a circuit different from that to which the receiver is connected. -Consult the dealer or an experienced radio/TV technician for help.
IC Warning	This device complies with Industry Canada licence-exempt RSS standard(s). Operation is subject to the following two conditions: (1) this device may not cause interference, and (2) this device must accept any interference, including interference that may cause undesired operation of the device. Le présent appareil est conforme aux CNR d'Industrie Canada applicables aux appareils radio exempts de licence. L'exploitation est autorisée aux deux conditions suivantes: (1) l'appareil ne doit pas produire de brouillage, et (2) l'utilisateur de l'appareil doit accepter tout brouillage radioélectrique subi, même si le brouillage est susceptible d'en compromettre le fonctionnement. This Class B digital apparatus complies with Canadian ICES-003. Cet appareil numérique de la classe B est conforme à la norme NMB-003 du Canada.

ECO FLOW

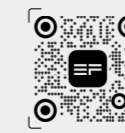
QUICK START GUIDE GUIDE DE DÉMARRAGE RAPIDE 快速指南

V1.0

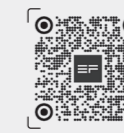


EcoFlow 50 Amp Hub Concentrateur de 50 A EcoFlow EcoFlow 安培集線器

For more details, check the latest user manuals or related documents.
Pour plus de détails, consultez les derniers manuels d'utilisation ou documents associés.
如需更多詳細資訊，請查看最新的使用者手冊或相關文件。
<https://www.ecoflow.com/support/download/delta-pro-ultra>



EcoFlow App



Documents