

TURNED EDGE APPLIQUE

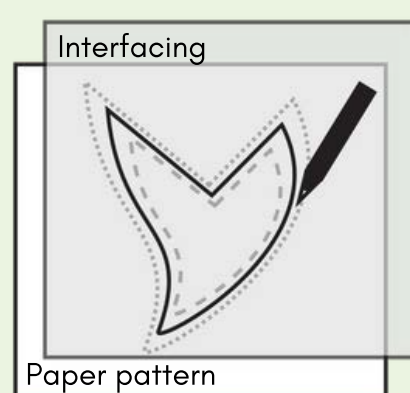
with interfacing

YOU WILL NEED

1. Printed pattern
2. Your favorite fabrics
3. Interfacing (one of the following):
 - Lightweight fabric
 - Sew-in interfacing
 - Fusible interfacing
 - Soluble embroidery stabilizer
4. Thread
1. Domestic sewing machine
2. Fabric and pinking (optional) shears
3. Disappearing fabric pen
4. Pins/Iron
5. Cocktail straw and a narrow tool that fits into the hole (optional)
6. Needle (optional)
7. Seam ripper (optional)

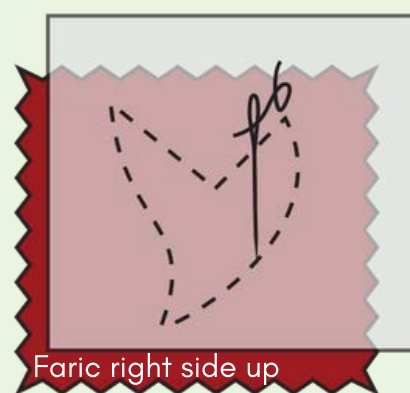
1 Transfer the pattern

Trace applique outline directly onto the interfacing. When using fusible interfacing, trace on non-sticky side.



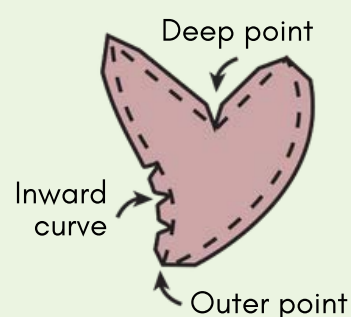
2 Stitch the interfacing

Put the interfacing onto the right side of the fabric with the sticky side down. Stitch it on the line to the fabric using a straight line stitch.



3 Prepare the seam allowance

Cut out the applique with a seam allowance. Make a single cut into the seam allowance at the deep inner points and multiple cuts at the inward curves. Trim the excess fabric around the sharp outer points.



4 Turn inside out

Make a slit in the interfacing using either scissors or a seam ripper. Turn the shape inside out through the opening using your fingers or a cocktail straw with a narrow tool.



5 Push out the seam

Use a pointy yet blunt tool, such as a round scissor blade, to fully push out the seam from the inside. Gently pull out the sharp outer points with the needle.



6 Sew the applique

Pin or iron fuse the applique in place. Stitch it down using your favorite stitch. Use a straight line stitch for speed or a narrow blind hem stitch to imitate hand stitching.

