



## Index

Safety Precautions	2
Hardware Overview	3
Product Care	4
Initial Setup for V10	5
Software Overview	7
Navigation	8
Camera	9
Google Services — Quick Setup	11
Setting Up Google Kids Space	12
Connecting to a Computer	22
Factory Reset	23
Troubleshooting The Tablet	27

### Important Tips

- Please fully discharge and recharge the first cycle of the battery.
- Always use the tablet at room temperature. If used in freezing temperatures, the battery may only last 1 hour; you need to power on at room temperature.
- Always use the original charger included with the package.
- If the tablet hasn't been used for a long time, and the battery is completely exhausted, it will enter sleep mode and you will need to recharge it for over 30 minutes to reactivate the tablet.
- Tip: In order to protect the battery life, always power off the device when it is not being used.

### Make sure to fully charge the battery before operating. It is best to charge for about 6 hours during the first three charging cycles to ensure best battery life.

- Do not store the device in places with high temperature, humidity, or dust.
- Do not drop the product. Avoid any type of strong impact. The protective cover is designed to help protect against scratches, not impact.
- Do not expose to liquid or water.
- Do not clean with alcohol-based products in order to protect the screen.
- Always use an appropriate volume setting. Ensure headphone or other peripheral devices are set properly.
- Do not disassemble the product or accessories. Doing so will void the warranty.
- Do not drive while using this product.
- Obey all laws and regulations when using the device.

### Technical Specifications

CPU/Processor	Qualcomm Snapdragon 600
Operating System	Android 11 OS
Browser	Google Chrome
Internal Storage	16 GB
Memory (RAM)	2 GB DDR3
Expansion Slot	Micro SD Card Slot, Support up to 128GB Flash
Screen	Front Panel 0.3 megapixel, Rear Panel 2.0 megapixel
Screen Resolution	1024x600
Touch Method	TouchScreen
Built-in speakers	TW 8 ohm built-in speaker
Earphone Jack	3.5 mm
Cable	Type-C Cable
Battery	3500 mAh
Size	7.46 in x 4.31 in x 0.39 in
Weight	9.7 ounce / 275.0 g
Voltage	AC 110-240V 50/60Hz DC 5V/2A
Charging Lamp	LED (Red to Green)
Network Access	WiFi (802.11 b/g/n)



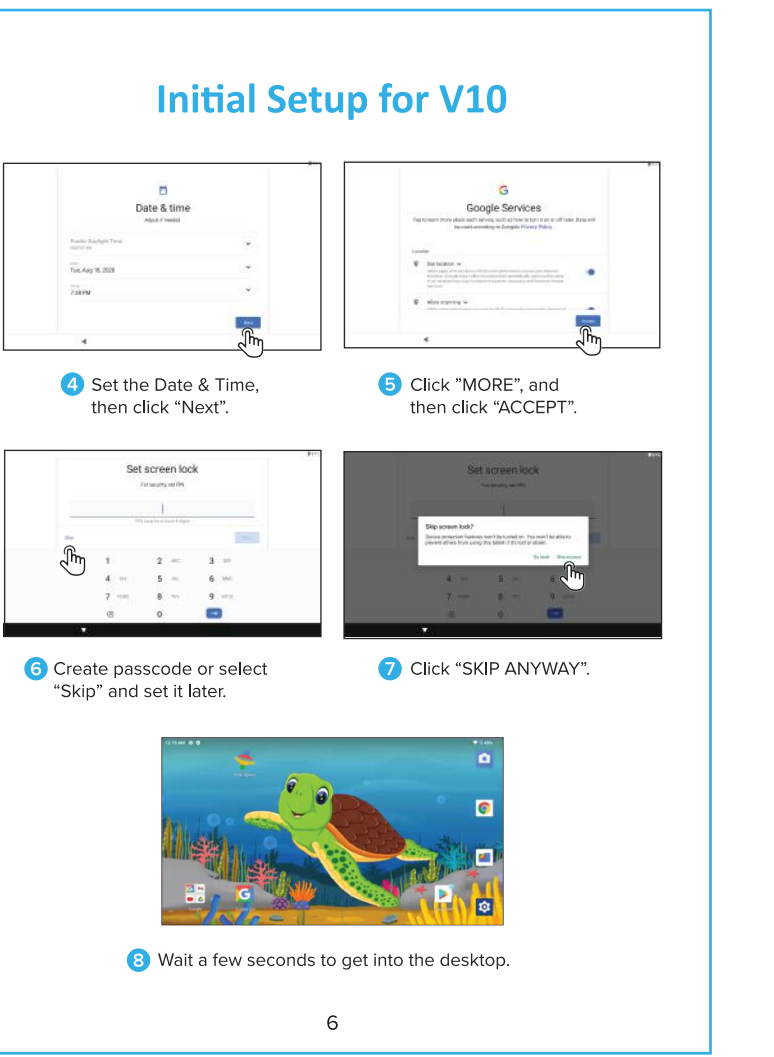
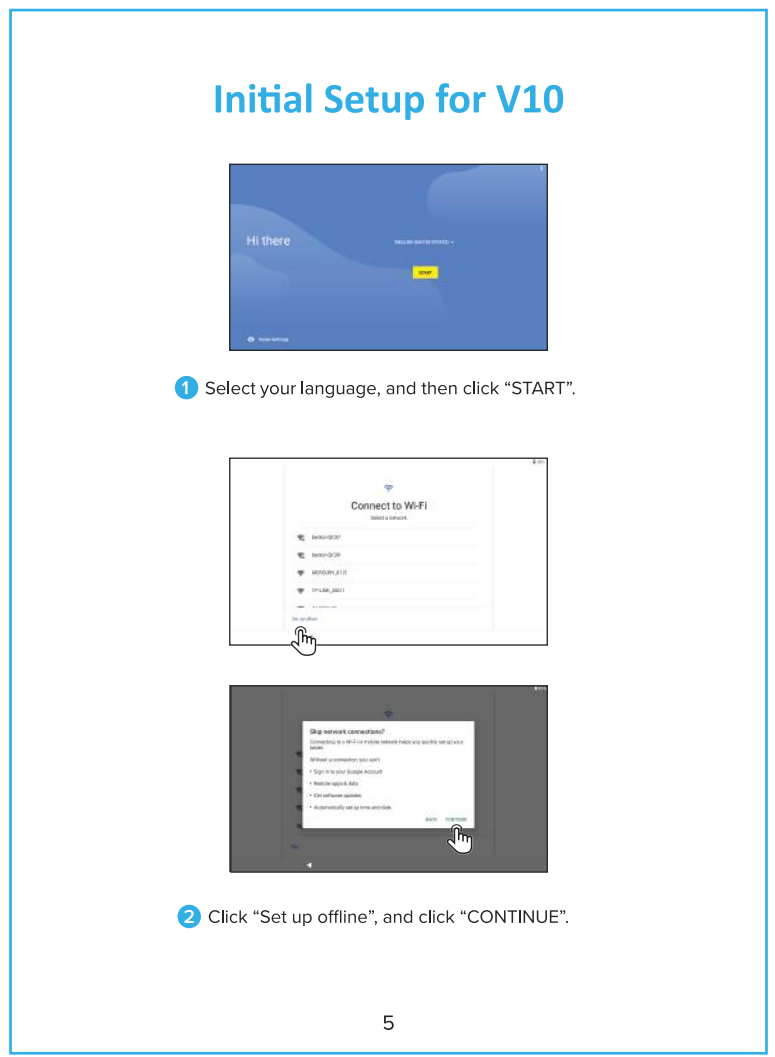
### Product Care

#### Charging

Use the included USB cable and AC Adaptor to charge the tablet. If the cable becomes damaged or is lost, you can order a replacement cable or charger from the manufacturer. It is not recommended to leave the battery charging for more than 8 hours. Do not use the charger in a wet or humid environment. Only charge the tablet in a safe environment.

#### Initial Setup

After the tablet has been fully charged, press and hold the power button for a few seconds until you see the Contixo logo appear. The tablet will power on and begin the initial start up sequence. Rest assured that after all the initial steps are completed, the start up process will be much faster.



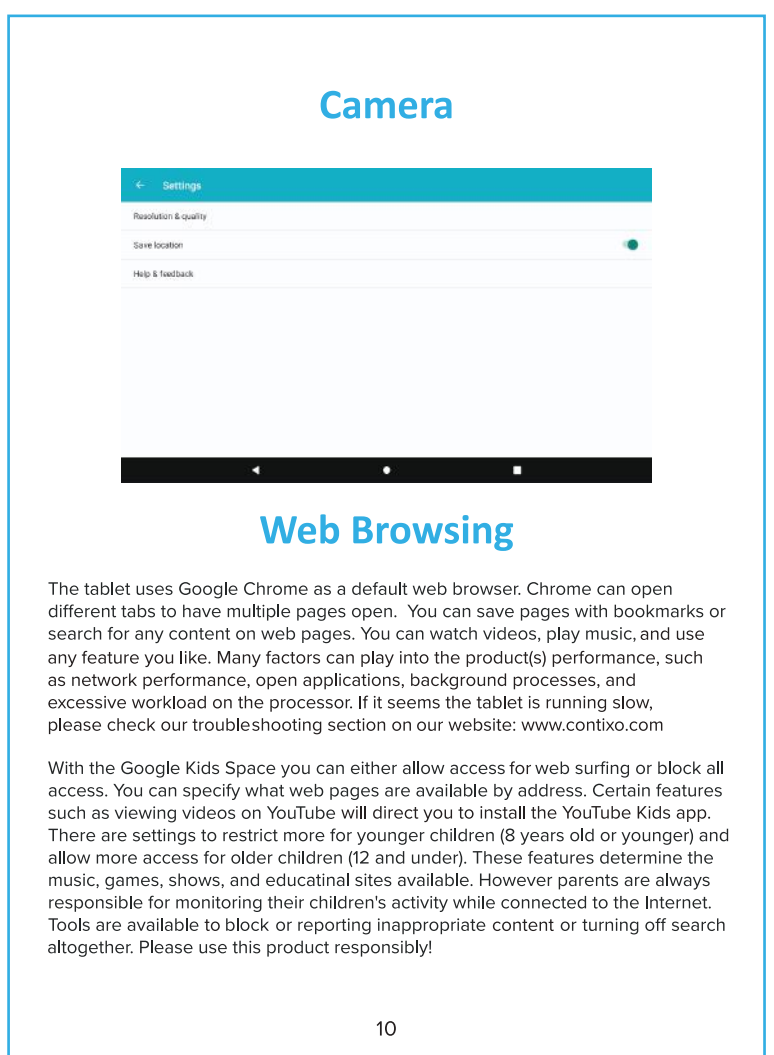
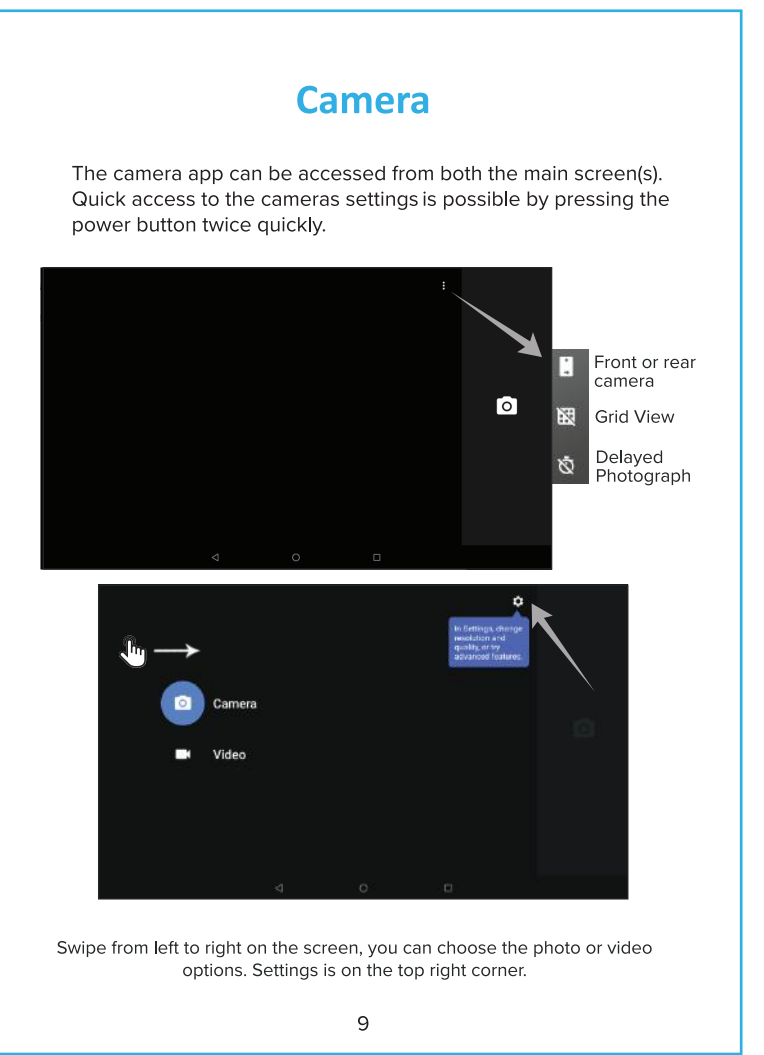
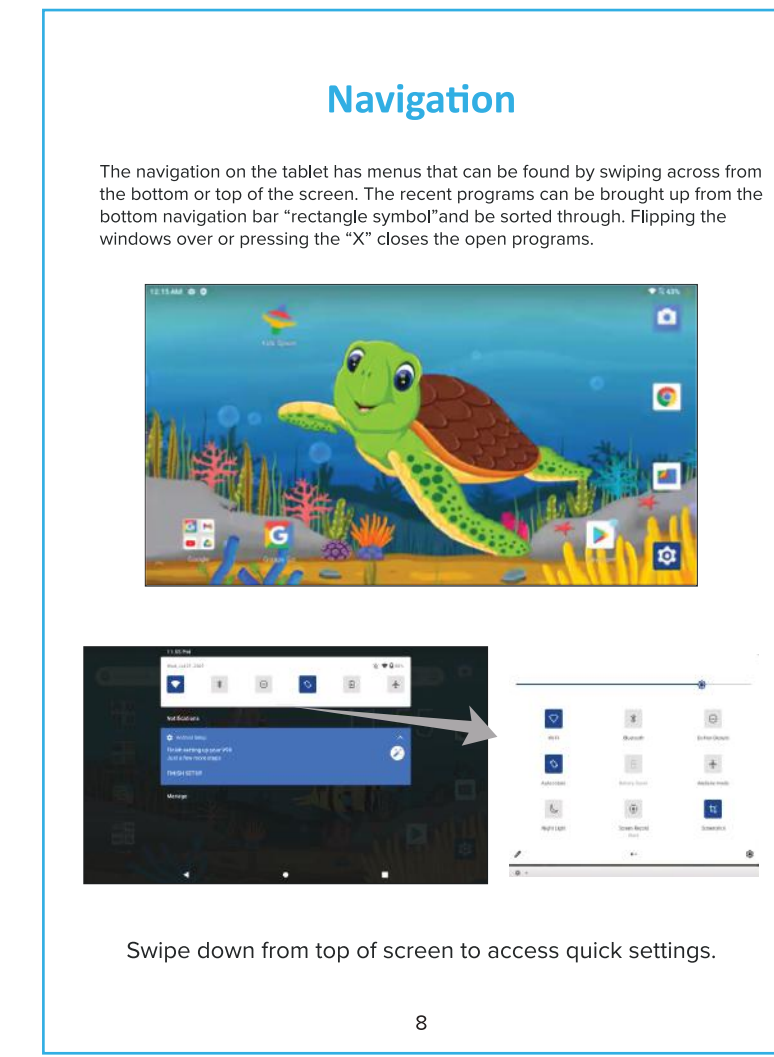
### Software Overview

The tablet hardware has been designed to meet the software requirements of all pre-installed software. After the initial setup, the tablet will run all apps smoothly. Running certain apps not associated with Google Kids Space can cause slowdowns. Please refer to hardware features and special Contixo tablets utilize an Android operating system that specializes in Google services. Just refer to common guidelines regarding Google services to stay up to date. There are many pre-installed apps, some may require additional services to work properly.

#### Power On/Off

Holding the power button will turn the tablet on. To put the tablet to sleep, simply press and release the power button. Sleep mode is best if you will turn the device on again soon. To power off the tablet, you must hold the power button for several seconds, then respond to the power menu screen by selecting "Power Off". This is the best option if the tablet will not be in use for more than a few days.

Application process: When activating any of the application for the first time such as Google Kids Space or others applications may freeze up for up to 10 seconds. This is normal for the first time running the application. Once this process has been completed it will run at its normal speed.



### Google Service Quick Setup

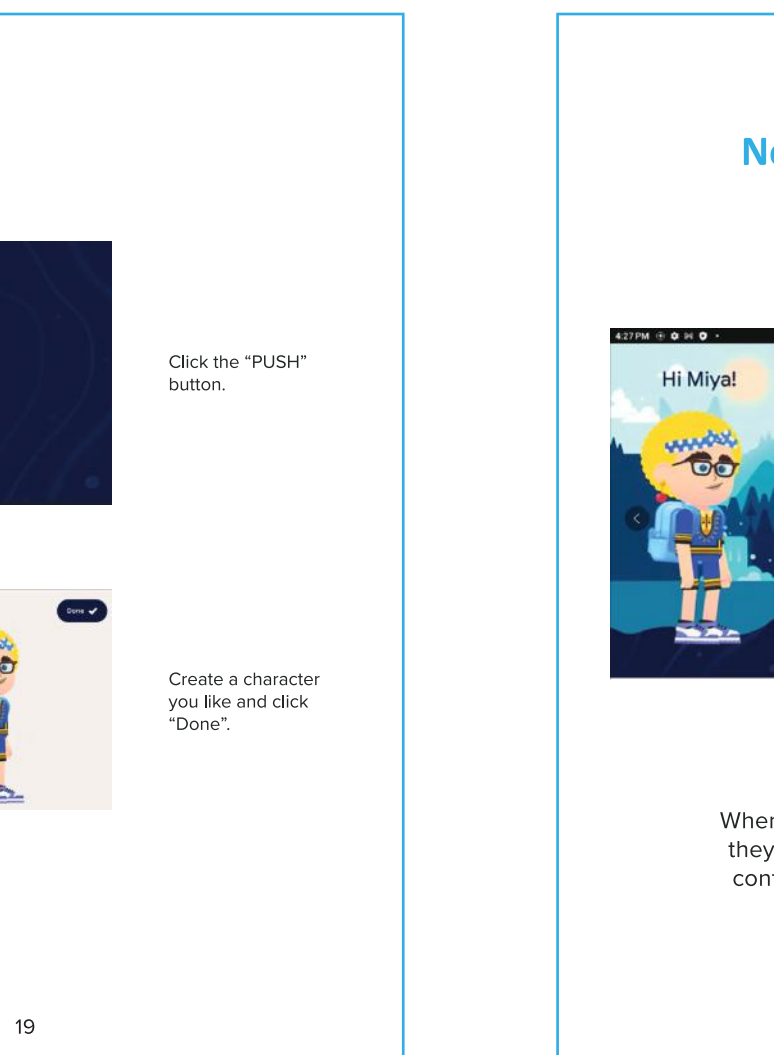
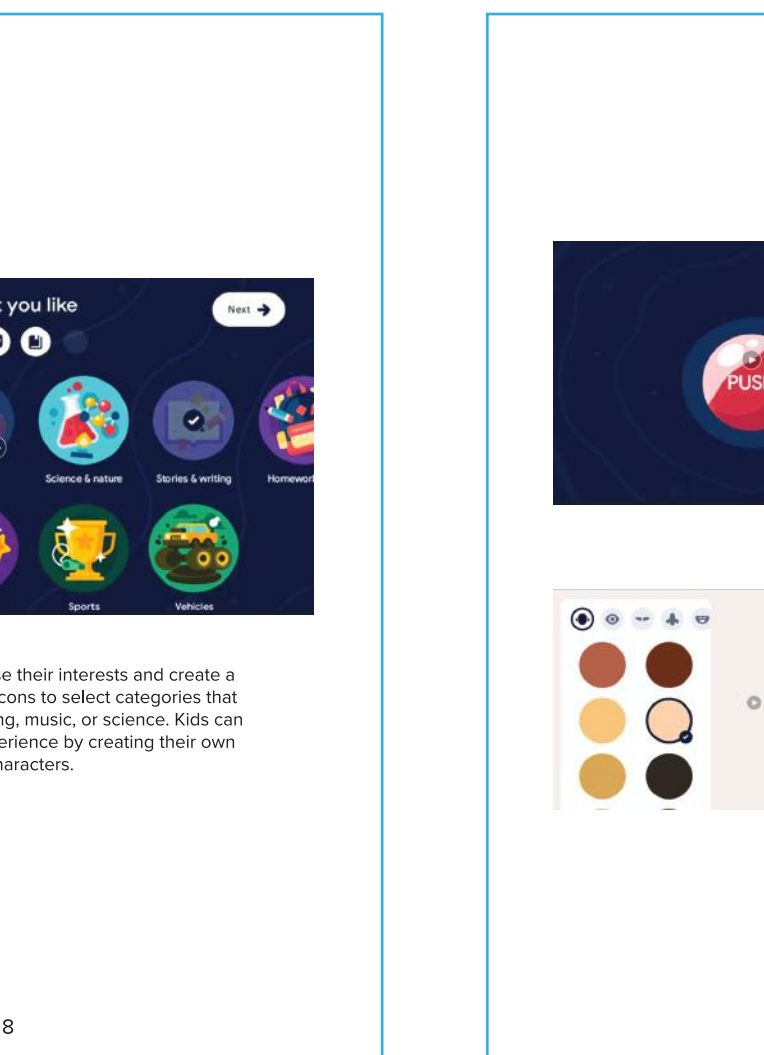
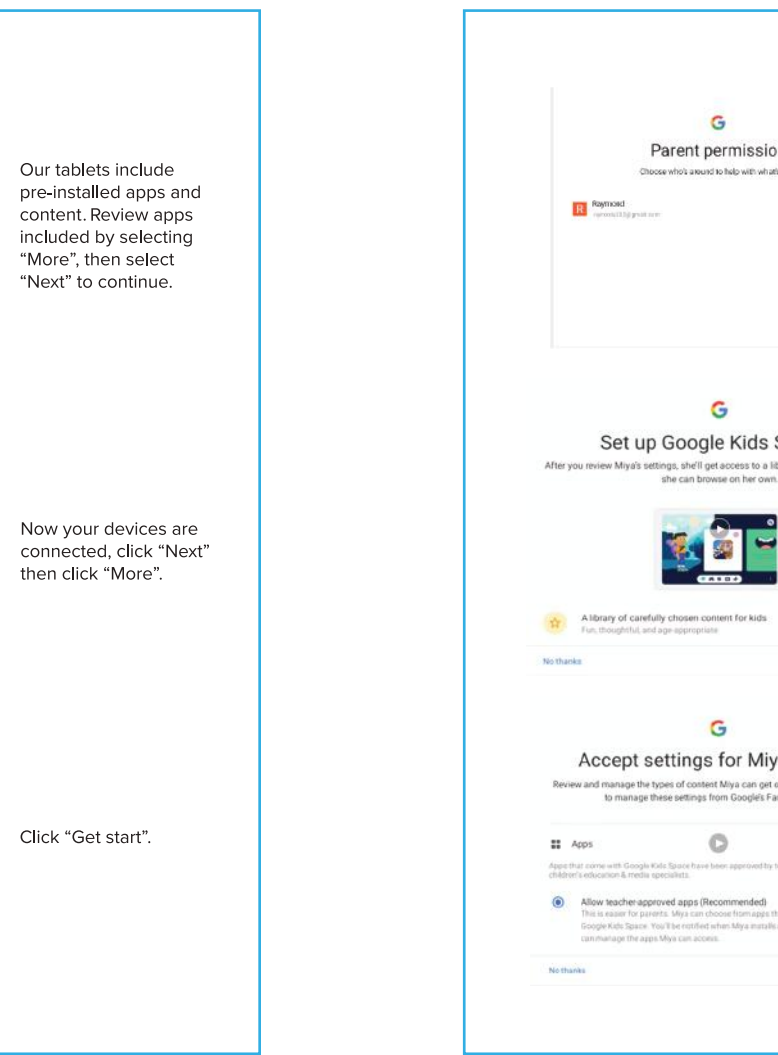
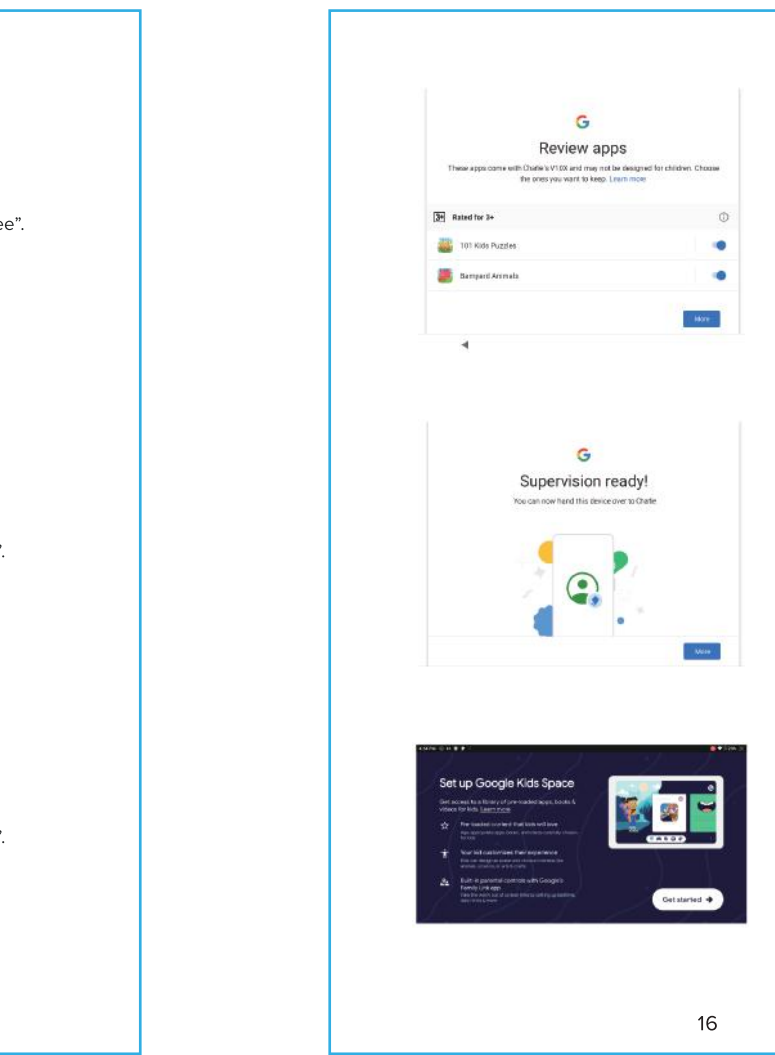
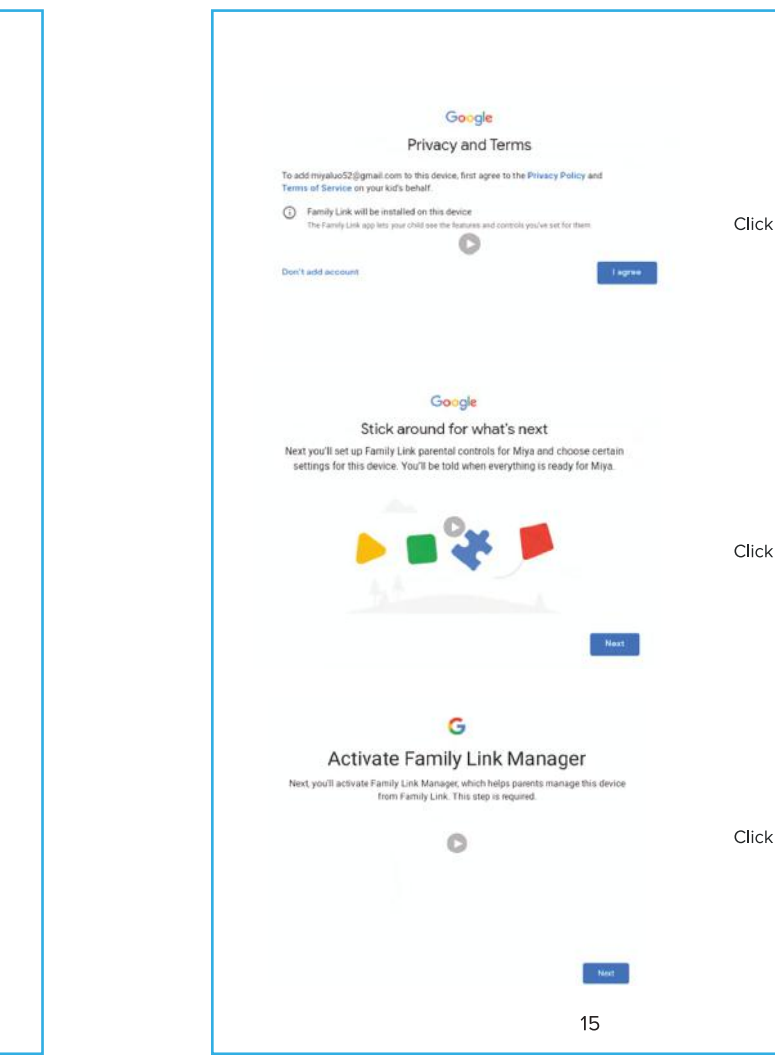
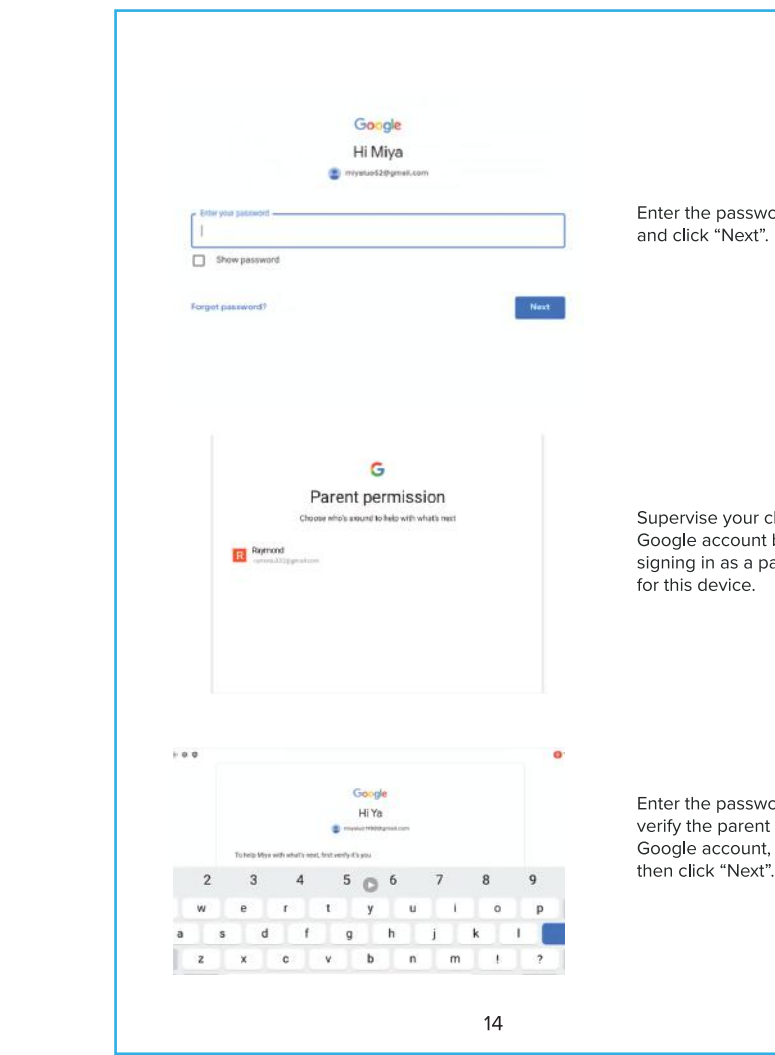
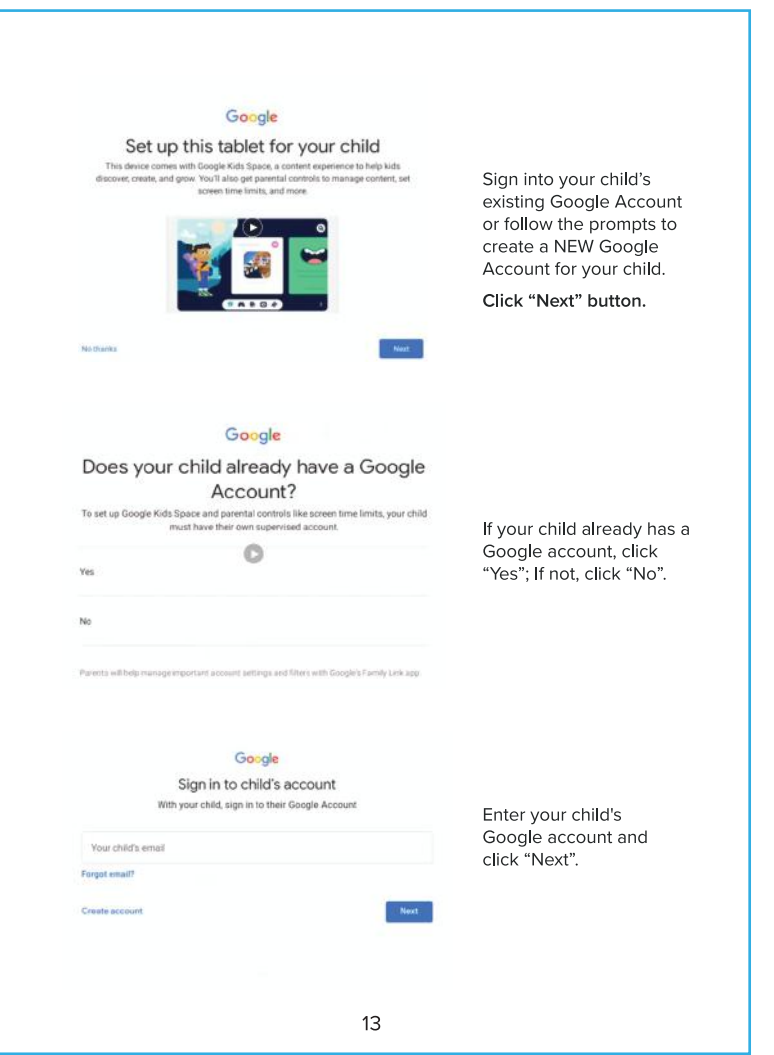
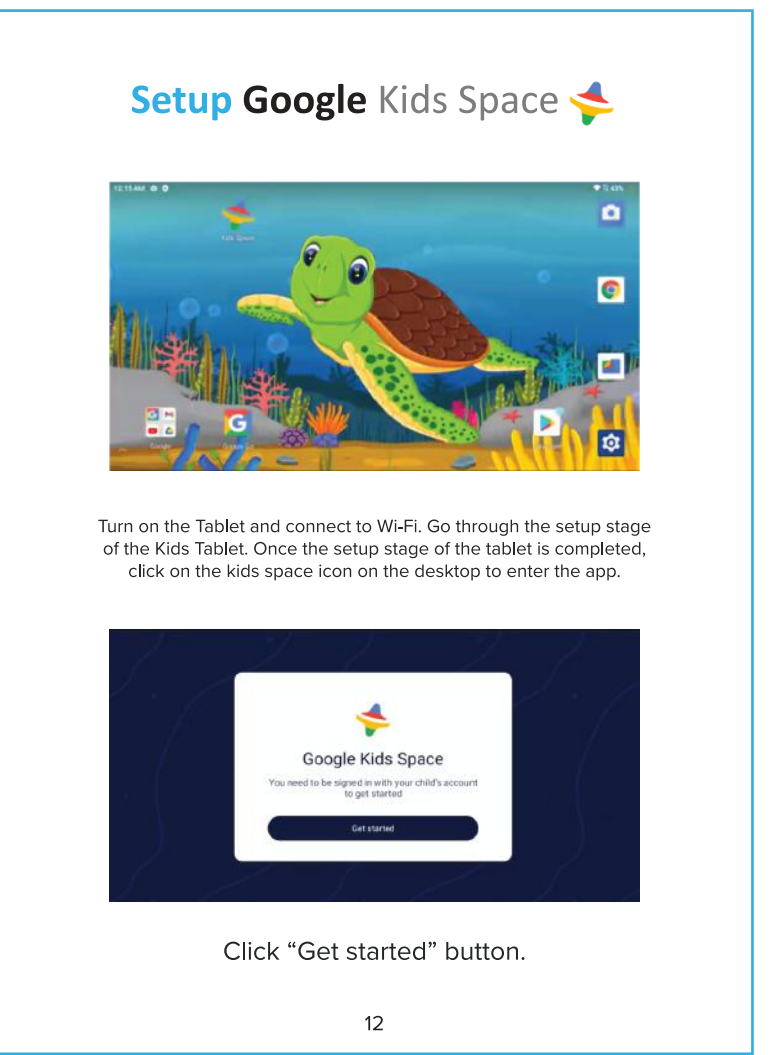
- WiFi connection required to access Google Services. First connect to a network.
- Sign in with an existing account or create one. You can create a new account for the child that is linked to an existing adult account. This allows the parent to be notified when changes occur or a new device is logged into.
- The Account Address screen provides confirmation that the account has been added.
- Additional services such as "Backup to Google Drive" can be accepted to save and preserve data such as pictures and files.
- Sign in the Google Play Store to update existing apps or download new apps.

Google Kids Space software and Google Services may change or update without any advance notice. Parents are responsible for additional installed apps or websites allowed on this product. Always backup any important data before installing this tablet.

### Control Panel Setting

The control panel settings allow the following features:

- Network & Internet** — Change WiFi settings, check your network configuration, airplane mode, or VPN (virtual private network).
- Connected Devices** — USB Charge phone, transfer files, etc. Pair new device, turn on Bluetooth.
- Apps & Notifications** — Set permissions & default apps.
- Battery** — Set power saving modes.
- Display** — Set brightness, wallpaper, sleep timer, auto-rotate screen, font size, display size.
- Sound** — Set volume level or do not disturb.
- Storage** — Test drive information.
- Security & Location** — Google features to help protect or find the device.
- Users & accounts** — Adding and modifying accounts.
- Accessibility** — Set screen readers, display interaction controls.
- Google** — Set services & preferences.
- System** — Set languages, time, backup, updates.



### Congratulations Now You are all done!

When children open Google Kids Space, they will find a collection of quality contents such as recommended apps, games, books, and videos.

### Manage Google Kids Space settings & apps

You can manage your child's Google Kids Space apps on your child's device and through Family Link.

- In the bottom right corner, press and hold the Parent menu.
- Tap "Device Settings".

#### To Access from Family Link

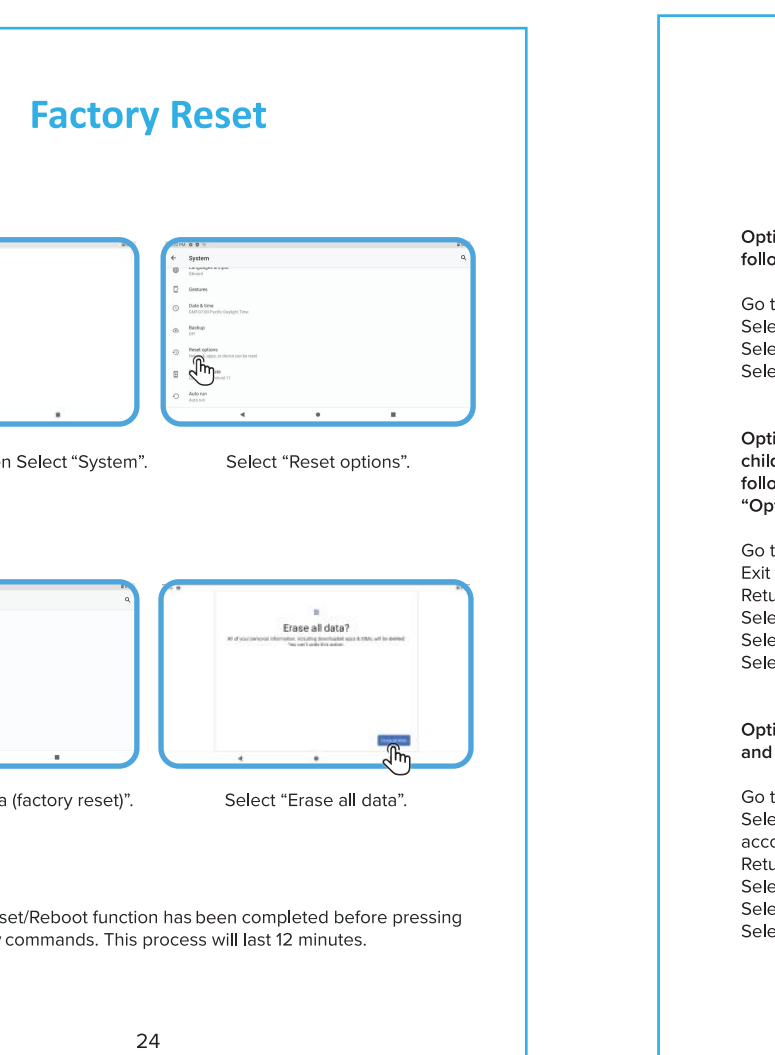
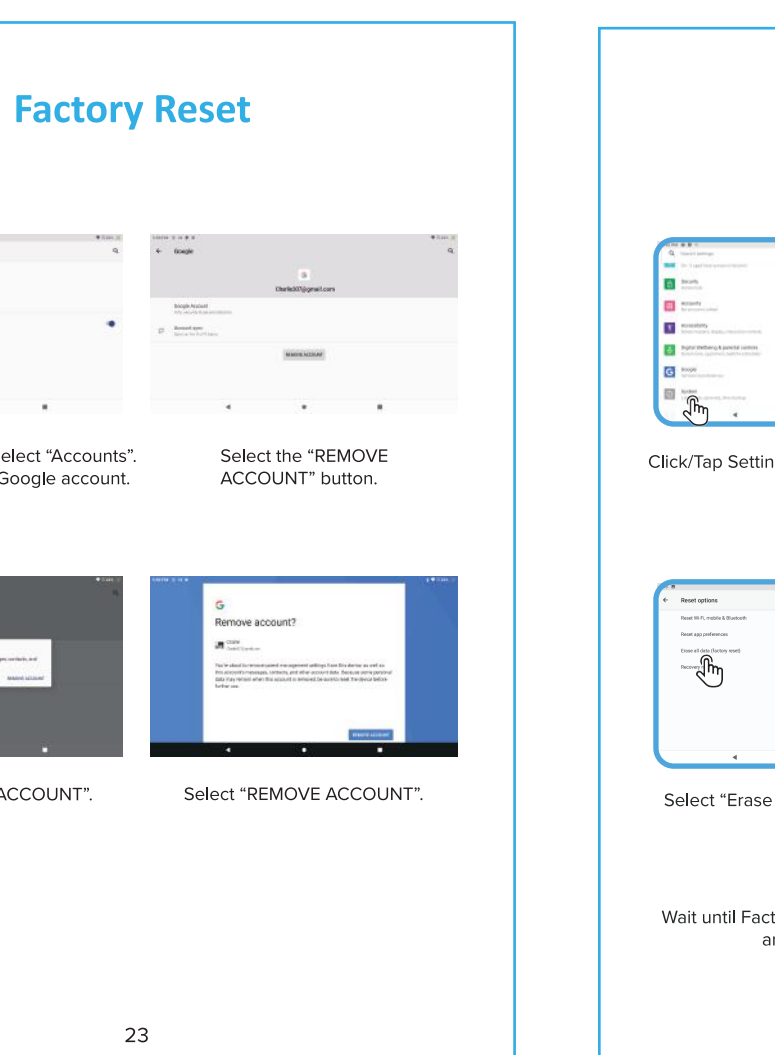
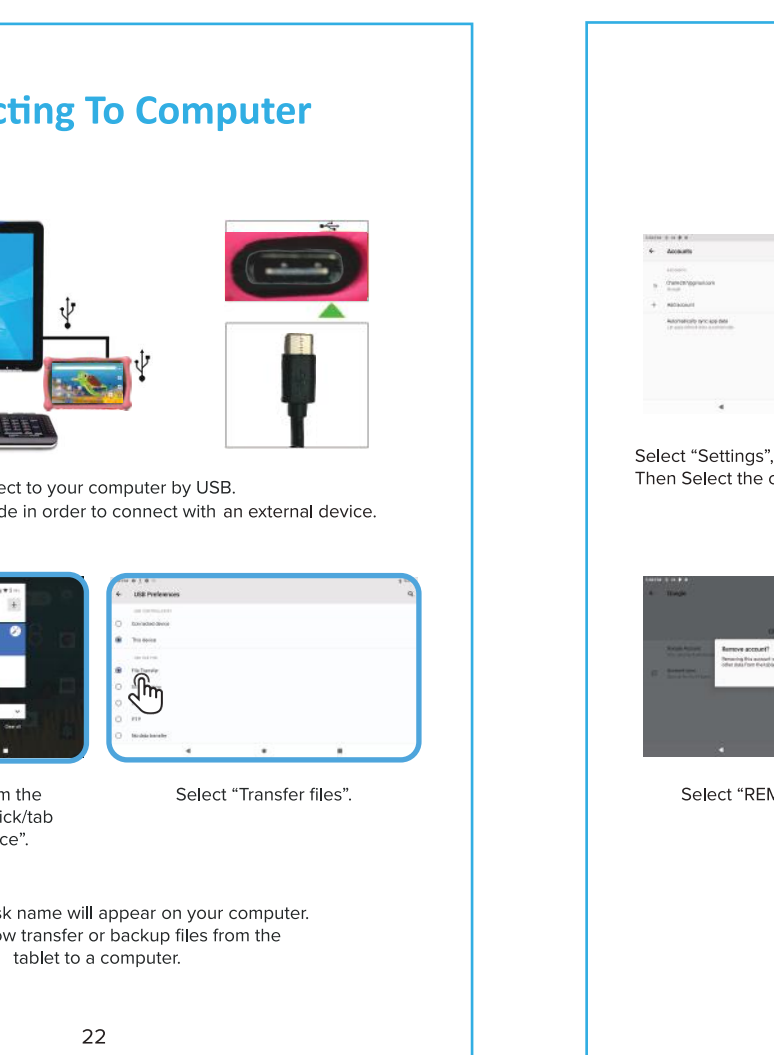
- Open the Family Link App
- Select your Child
- Go to Manage Settings
- Select Google Kids Space Settings

In Family Link, you control settings like whether parental approval is required before your child installs apps recommended by Google Kids Space and if your child gets recommended apps with ads.

#### Turn off the Google Kids Space App

- In the bottom right corner, press and hold the Parent menu.
- Select "Parental controls".
- Select "Google Kids Space". Then "Turn off Google Kids Space".

You can use the Family Link App on your Android or iOS device to manage Google Kids Space settings. More details about Kids Space are on [www.contixo.com](http://www.contixo.com).



### Factory Reset

Option 1: If the tablet has never used the Google Kids Space App, then follow the steps below to use manual factory reset guide below:

Go to Settings, then select "System".

Select "Reset options".

Select "Erase all data (factory reset)".

Select "Erase all data".

Option 2: If the tablet has been logged into Google Kids Space with the child's Google account, you must first log out of the child's account, by following the steps below, then continue by following the steps in "Option 1" above.

Go to Settings, select "Account".

Exit child's Google account.

Return to settings and select "System".

Select "Reset options".

Select "Erase all data (factory reset)".

Select "Erase all data".

Option 3: If the tablet was logged in with the parent's Google account and also has been used with Kids Space, follow the steps below:

Go to Settings, select "System".

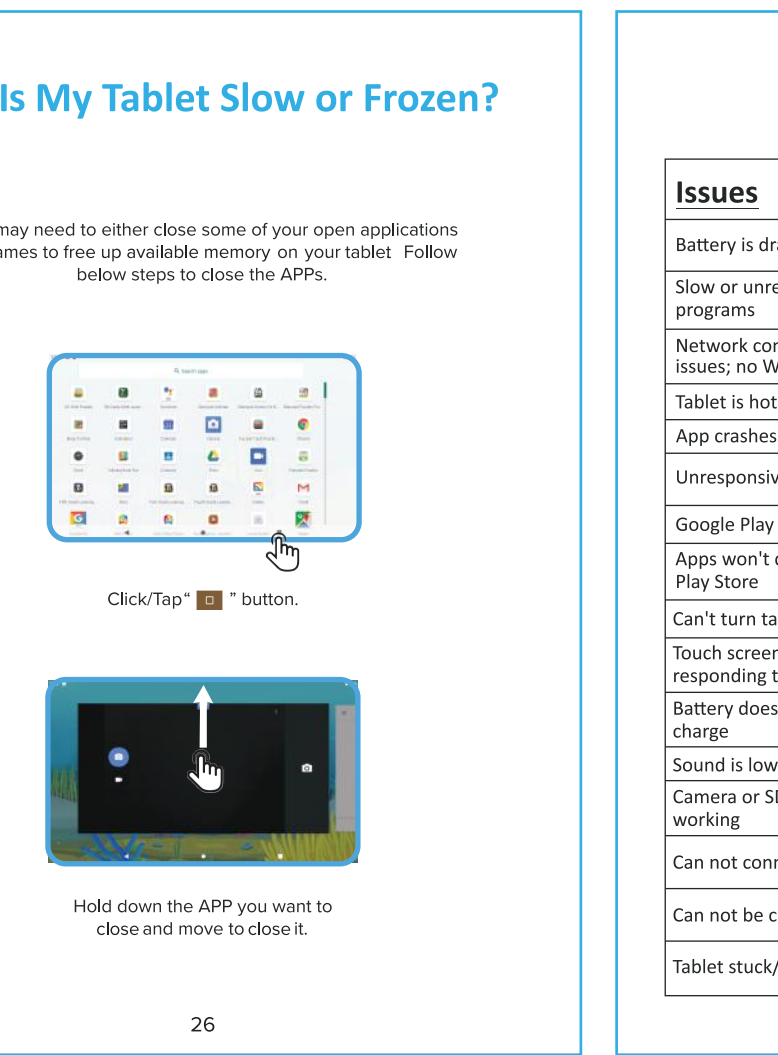
Select "Multiple users" and select the parent account, select switch account in the bottom status bar.

Return to settings and select "System".

Select "Reset options".

Select "Erase all data (factory reset)".

Select "Erase all data".



### Trouble Shooting

Issues	Solutions
Battery is draining too fast	Adjust screen brightness to a lower setting; close unused apps.
Slow or unresponsive programs	Close unused apps; clear app cache and do a factory reset in Settings menu.
Network connectivity issues; no WiFi connection	Reset network connections; toggle airplane mode on/off.
Tablet is hot or overheating	Close unused apps; clear app cache.
App crashes	Reopen app; update app through Play Store.
Unresponsive screen	Restart tablet by holding power button for 8 seconds.
Google Play Store crashes	Clear app cache and restart.
Apps won't download from Play Store	Clear Play Store cache; open app settings and clear local search.
Can't turn tablet on/off	Hold power button for Power Menu options.
Touch screen issue; not responding touch	Low battery power; check for physical damage.
Battery does not hold a charge	Check power cable; inspect power button if stuck.
Sound is low	Check speaker port for blockage.
Camera or SD Card not working	Consult Software / Reset to factory default.
Can not connect to WiFi	The tablet does not support 5G WiFi, it can only connect to 2.4G WiFi.
Can not be charged	Check if the USB damaged / Replace the charger.
Tablet stuck/frozen	Insert a pin to press the reset button and restart the tablet.

### Other Issues related to Google Kids Space

Issues	Solutions
Cannot enter the system	1. Press and hold the volume "+" and don't release it when the power is off, then press and hold the power button for 5-8 seconds. 2. After entering the next interface, use the volume key to move the cursor to select "Wipe data/factory reset", and then click the power button to confirm.
Kids Space delays or white screen when reboot.	3. After entering the next interface, select the "Yes" option, and then click the power button to confirm. 4. After entering the next interface, click the power button to confirm, and the tablet will automatically restore the factory settings.
Shows "ERROR" Message when you install setup the Google Kids Space.	Everytime Google Kids Space reboots, you may experience delay or white screen, which is normal because the Kids Space is more like an independent OS system rather than an APP. It needs time to pre-load.
Other issues related to Google Kids Space	Please don't click on any buttons before the setup stage is fully completed, otherwise you may receive an "ERROR" notice, and you may need to restart the setup process.

Please visit [www.contixospace.com](http://www.contixospace.com)