

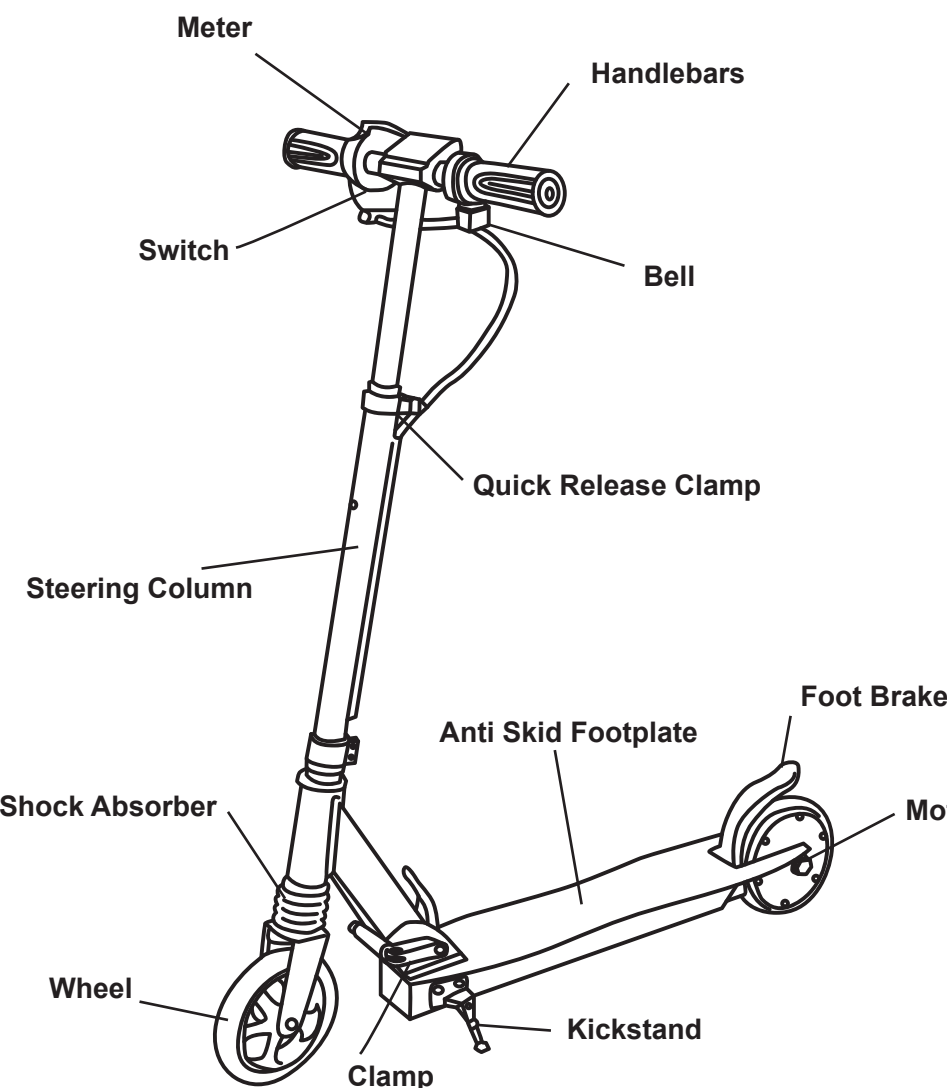


S100 ELECTRIC SCOOTER USER MANUAL

Package Contents

1 x Electric Scooter • 1 x User Manual • 2 x Allen Wrench • 1 x Charger

Product Description



Safety Warning

This electric scooter is designed to have one (1) rider only. Do not ride with passengers.

Any minor that uses this scooter must be accompanied by an adult.

When riding this scooter, please wear safety helmet and other protective equipment properly.

Do not ride this product on a motorway or in other places where users may face safety hazards or go against relevant regulations.

Practice maneuvering this scooter in an open, obstacle free area.

Always control and ride this scooter with both hands on the handlebars. Using only one hand while riding can be dangerous.

Avoid driving the scooter over pits, potholes, cracks, or other separations in the roadway. Doing so can cause the scooter to flip over causing injury to the rider. Always be cautious and aware of the road

User must adjust height of the product to the appropriate position to ensure safety. There is the risk of fire under misuse. Please read the manual carefully.

Do not put battery into fire, it may cause explosion.

Do not ride the scooter on slippery roads with oil or ice.

Do not ride this scooter on any downhill or uphill grade that exceeds 5 degrees. Doing so may cause braking failure. It is best to get off and push the scooter instead.

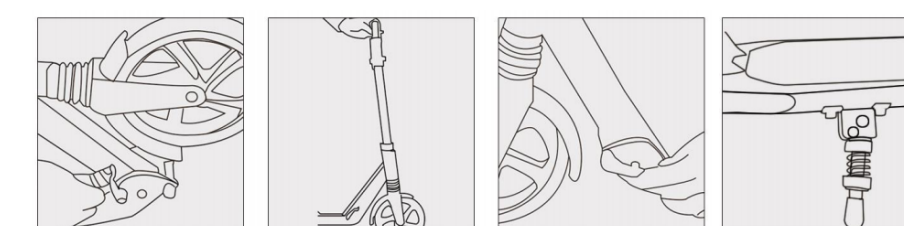
Do not put the product in an area with water depth above 5cm to avoid damage to electrical parts of the vehicle.

Avoid riding this scooter in sever weather such as rain, snow, and high winds to avoid causing damage to it.

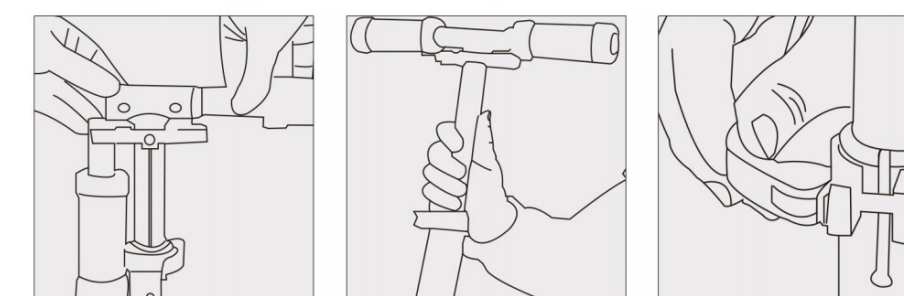
Non-professional personnel is prohibited from dismantling the battery pack, otherwise it may result in serious accidents because of electrical shock or short circuit.

No not dismantle the scooter, there is no spare parts inside the scooter.

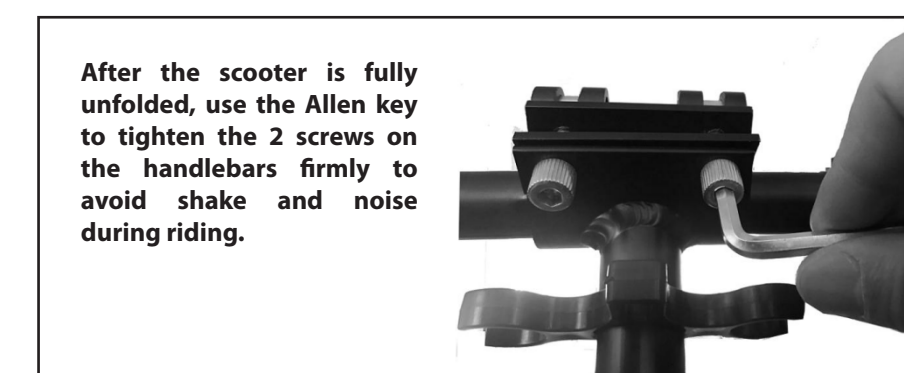
Unfold



1.Press the folding lever. 2.Unfold the scooter fully. 3.Fasten and close the clamp. 4.Put down the kickstand.

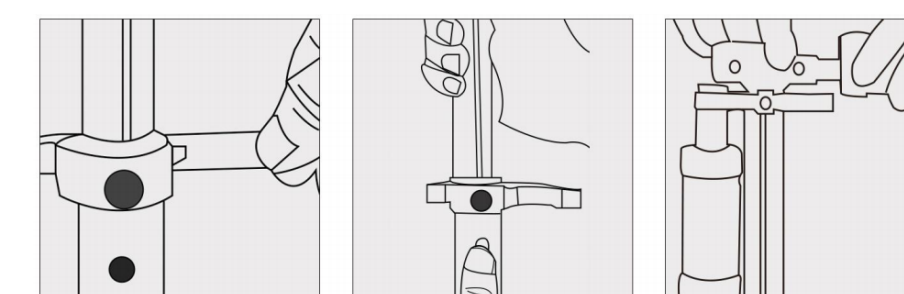


5.Press the marble and insert the tube until the marble is on its position, then close the clamp. 6.Pull upwards the handlebar, and adjust the marble into appropriate position, then fasten and close the clamp.

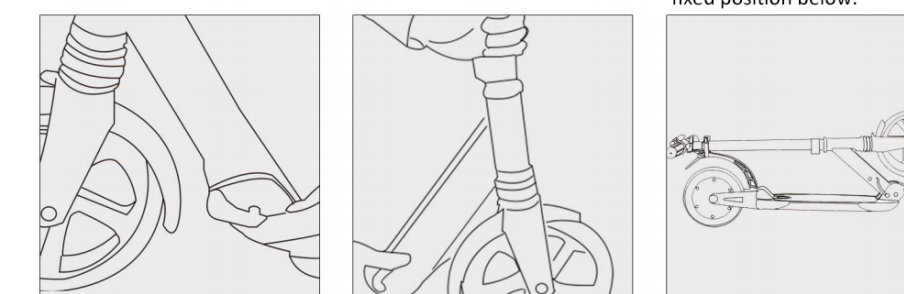


After the scooter is fully unfolded, use the Allen key to tighten the 2 screws on the handlebars firmly to avoid shake and noise during riding.

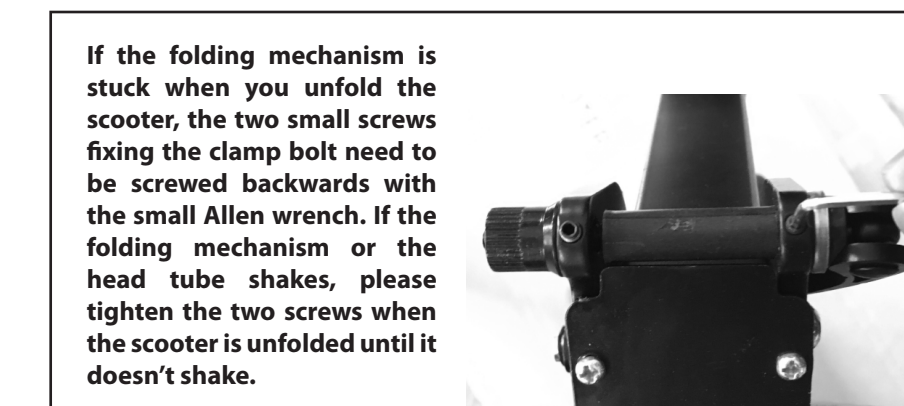
Fold



1. Open the clamp. 2. Press the marble and adjust the tube down to the lowest position. 3. Open the clamp, press on the marble, pull out the handlebar, and clip it at the fixed position below.



4. Hold the tube and press down the folding lever. 5. Pull the tube backwards gently until hearing a click, and the scooter is folded. 6. The scooter is folded.



If the folding mechanism is stuck when you unfold the scooter, the two small screws fixing the clamp bolt need to be screwed backwards with the small Allen wrench. If the folding mechanism or the head tube shakes, please tighten the two screws when the scooter is unfolded until it doesn't shake.

Riding

Press the boat type switch button on the handle to turn the power on/off. After witching the power on. Hold the handle with both hands.Rotate the handle in indicated direction to speed up.

The battery level will display on the meter screen.

To slow down, please press on the rear fender with one foot, and loosen it when slowing down to the required speed, at which time, the vehicle will keep running at the current speed. If you want stop the scooter, press the foot brake until the scooter stops.

Please switch the power off after riding. Unless the scooter will keep beeping until the power is switched off or the battery is dead.

Battery

Before you use the scooter for the first time, please fully charge the battery. Please charge it to avoid damage to the battery when the battery is low. At room temperature, the battery can supply a normal capacity and range.

Battery capacity will decline under 0°Celsius, the range at -15°Celsius may drop to half of it at room temperature.

Charging

Open rubber cover of the charging port inside of the scooter, and insert output connector of the charger into the charging port. Insert the electric plug into the power socket.

If the charger indicator is red, it indicates that the battery is being charged. If it turns to green, it indicates that the battery is fully charged.

Please charging the battery in a dry and ventilated environment.

Maintenance

If the scooter body surface stains, use toothpaste with soft cloth to wipe, and then clean them with a damp cloth. Do not use alcohol gasoline, kerosene or other corrosive, volatile chemical substance for the cleaning, otherwise the surface of the body and internal structure will be seriously damaged.

Do not use pressure washer to wash. When you wash the the scooter please make sure that the power is turned off, the charger is pulled out and the charger hole is well covered, otherwise you may get an electric shock or the water leaking into the internal body may cause serious trouble.

When the scooter is not used, place it in dry, shady and cool indoor environment. Avoid placing the scooter in outdoors for a long time. Sun exposure/hot/cold outdoor environment will accelerate the aging of the tire and reduce the life of battery pack.

If some parts shake when riding, use the tools to tighten the screws on the parts and tighten the clamps.

Do not place the battery in temperature above 50°Celsius or under -20°Celsius, it will led to battery failure, overheating, or even a fire risk. If the scooter is out of power after riding, it should be fully charged within seven days.

A battery pack which is fully charged will run out of power after about 90 days. If the scooter has not been used for a long time, it should be fully charged at least once a month, otherwise it is likely to result in excessive battery discharging. The damage is irreversible, it will not be able to be recharged again, and can't enjoy warranty.



Designed by Contixo, California USA. Assembled in China.
Website: www.contixo.com • Email: sales@contixo.com • Support: support@contixo.com
© 2021 Contixo Inc. All Rights Reserved*. The Contixo logo and associated characters, trademarks and design elements are owned and licensed by Contixo Company.

Warranty

Under normal use conditions, if the parts equipped for the scooters are under warranty, please contact the seller for after-sales services. The fault or damage due to the following causes is not covered in warranty:

1. Improper maintenance and repair.
2. Any damages or failures due to use of scooter for hazardous actions, such as stunts.
3. Damages or failures to the scooter due to accidental collision, water immersion, driving on non-normal roads and other non-normal factors
4. Unauthorized disassembly or replacing original parts with different parts.
5. Rapid aging and failure of the product due to prolonged exposure to sunlight or rain.
6. Commercial renting.

Product Specs

| | |
|-----------------------|---------------------|
| Dimensions | 39.7" X 31.8" X 15" |
| Weight | 13 lbs |
| Frame material | Aluminium alloy |
| Wheel size | 5 inches |
| Rated power of motor | 180W |
| Max speed | 9.3 mph |
| Mileage | 3.2 - 6.2 miles |
| Max gradient | 5° |
| Ingress protection | IP53 |
| Battery capacity | 29.4V, 2000mAh |
| Charger | 29.4V, 1A |
| Charging time | 2-3h |
| Max load | 175 lbs |
| Operating temperature | 32-77 Fahrenheit |