



Index

Safety Precautions	2
Hardware Overview	3
Product Care	4
Initial Setup for K102	5
Software Overview	7
Navigation	8
Camera	9
Google Services — Quick Setup	11
Setting Up Google Kids Space	12
Connecting to a Computer	22
Factory Reset	23
Troubleshooting The Tablet	27

Important Tips

1. Please fully discharge and recharge the first cycle of the battery.
2. Always use the tablet at room temperature. It is used in freezing temperatures, the battery may only last 1 hour, you need to power on at room temperature.
3. Always use the original charger included with the package.
4. If the tablet has not been used for a long time, and the battery is completely discharged, it will enter sleep mode and you will need to recharge it for over 30 minutes to re-activate the tablet.
5. Tips: In order to protect the battery, always power off the device when it is not being used.

Technical Specifications

CPU (Processor)	Qualcomm 15GHz A100
Operating System	Android 10 OS
Browser	Google Browser
Internal Storage	2 GB DDR3
Memory (RAM)	2 GB DDR3
Expansion Slot	Micro SD Card Slot, Support up to 128 GB Flash Storage
Screen Resolution	1200x800
Input Method	Touch Screen
Built-in speakers	1W 8 ohm built in speaker
Earphone Jack	3.5 mm
Battery	Type: C Coble 4000mAh
Size	10.1" x 6.8" x 0.4" In
Weight	1.25kg (2.75lb)
Voltage	AC 110-240V 50/60Hz DC 5V/2A
Operating Temp	0°C (32°F) to 35°C (95°F)
Network Access	Wi-Fi (802.11 b/g/n)



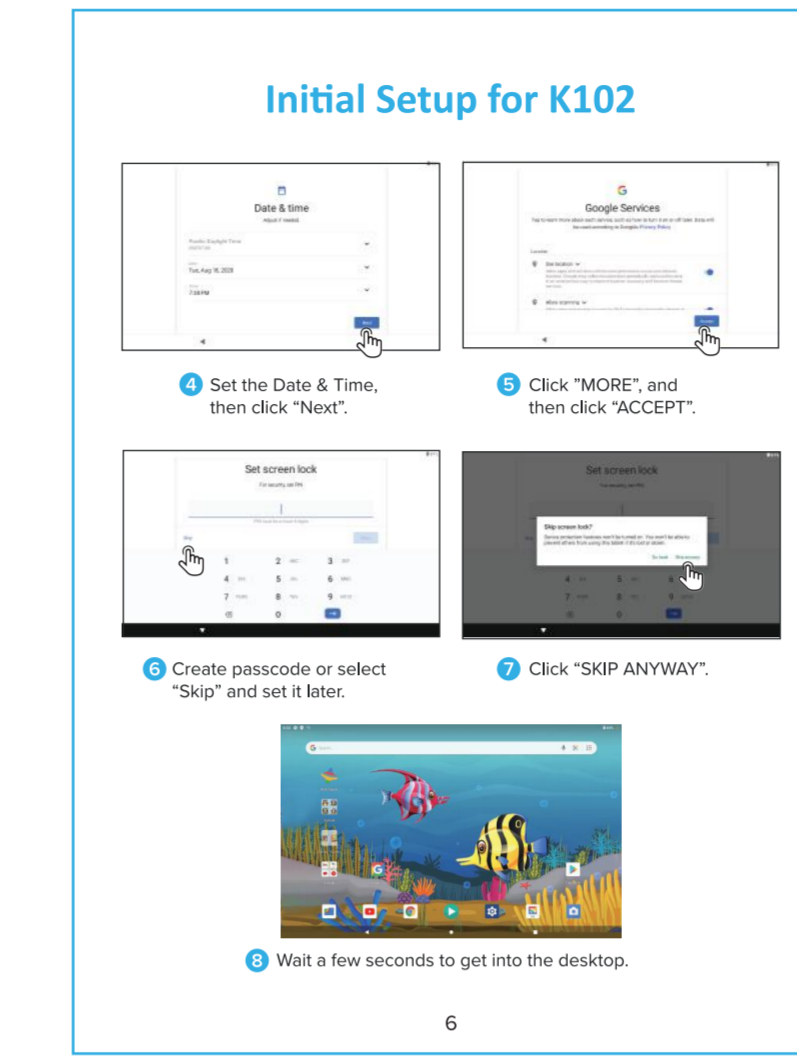
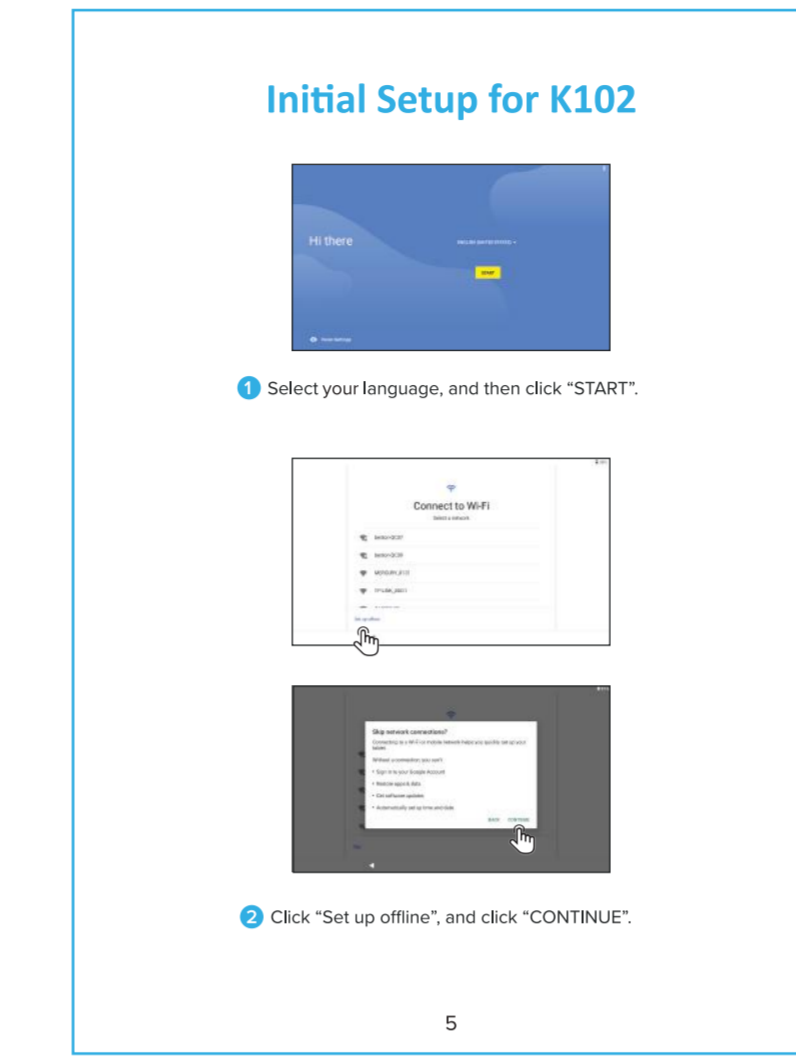
Product Care

Charging

Use the included USB cable and AC Adaptor to charge the tablet. If the cable becomes damaged or is lost, you can order a replacement cable or charger from the manufacturer. It is not recommended to leave the battery charging for more than 8 hours. Do not use the charger in a wet or humid environment. Only charge the tablet in a safe environment.

Initial Setup

After the tablet has been fully charged, press and hold the power button for a few seconds until you see the Contixo logo appear. The tablet will power on and begin the initial start up sequence. Rest assured that after all the initial steps are completed, the start up process will be much faster.



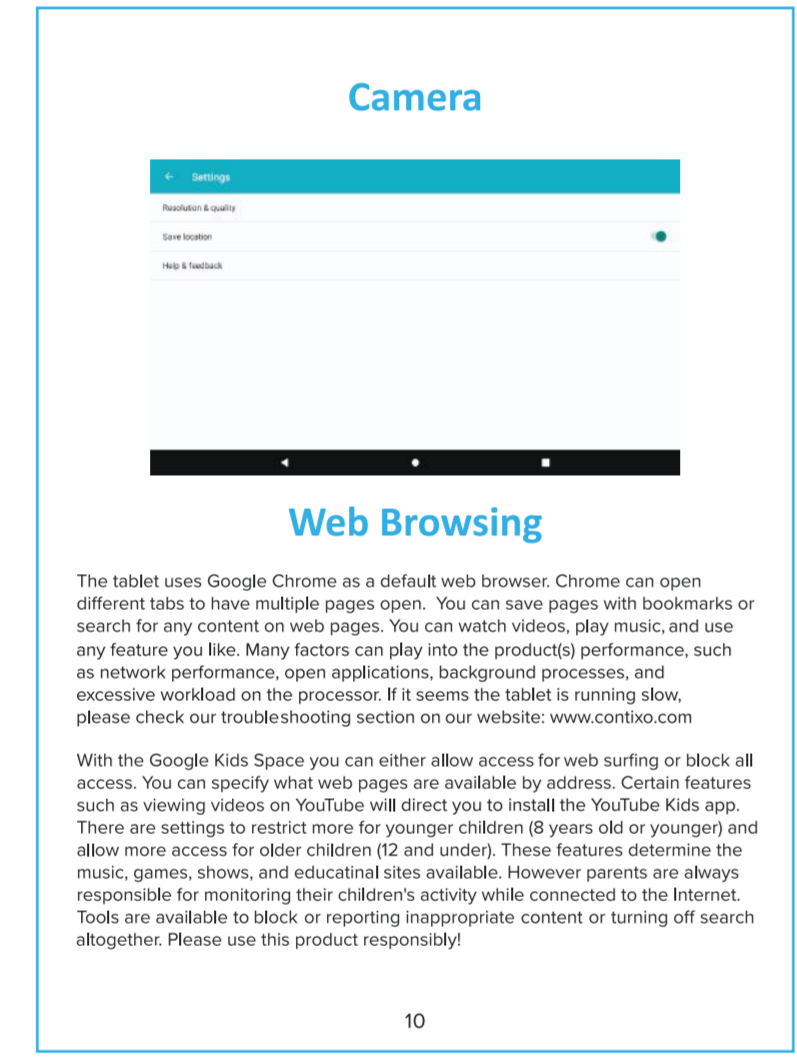
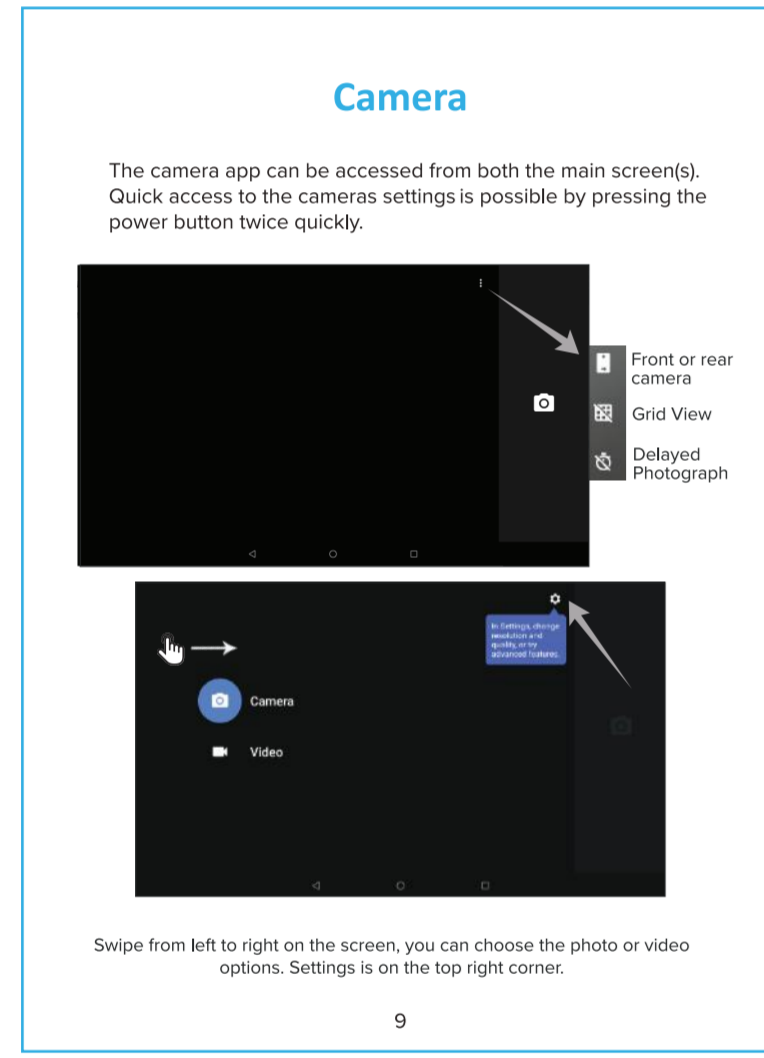
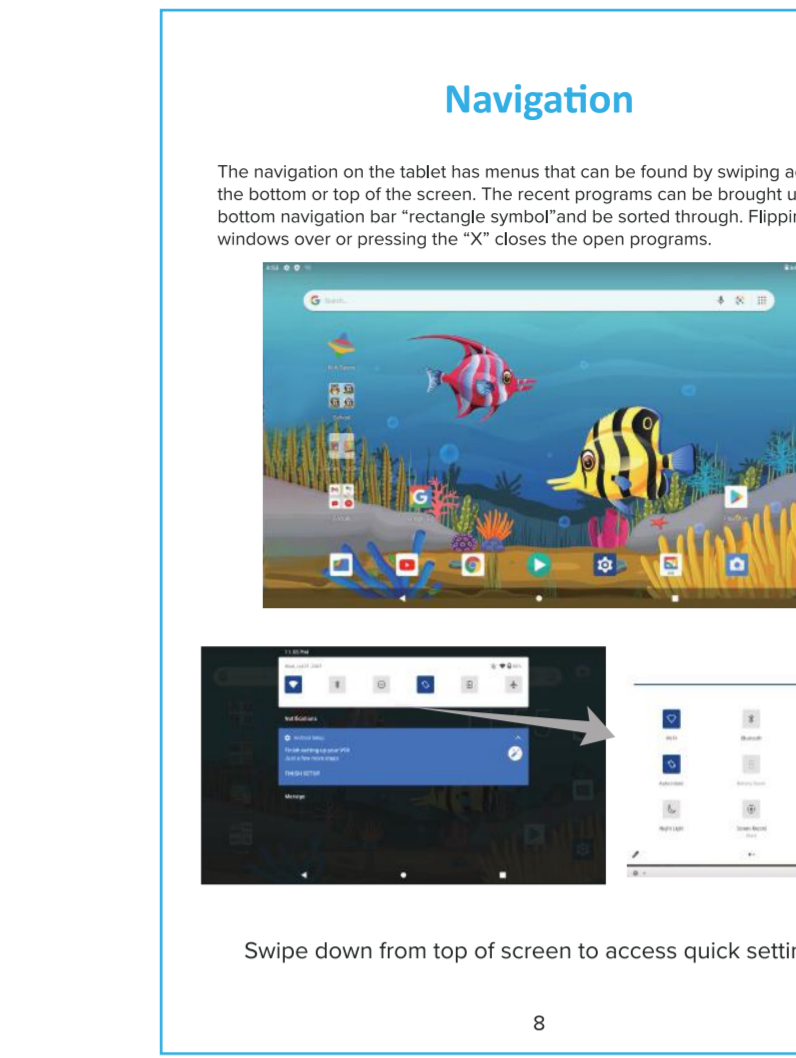
Software Overview

The tablet hardware has been designed to meet the software requirements of all pre-installed software. After the initial setup, the tablet will run all apps smoothly. Running certain apps not associated with Google Kids Space can cause slowdowns. Please pages 2-3 for hardware features and special Contixo tablets utilize an Android operating system that specializes in Google services. Just refer to common guidelines regarding Google services to stay up to date. There are many pre-installed apps, some may require additional services to work properly.

Power On/Off

Holding the power button will turn the tablet on. To put the tablet to sleep, press and release the power button. Sleep mode is best if you will turn the device on again soon. To power off the tablet, you must hold the power button for several seconds, then respond to the power menu screen by selecting "Power Off". This is the best option if the tablet will not be in use for more than two days.

Application process: When activating any of the application for the first time (such as Google Kids Space or others) applications may freeze up for up to 15 seconds. This is normal for the first time running the application. Once this process has been completed it will run at its normal speed.



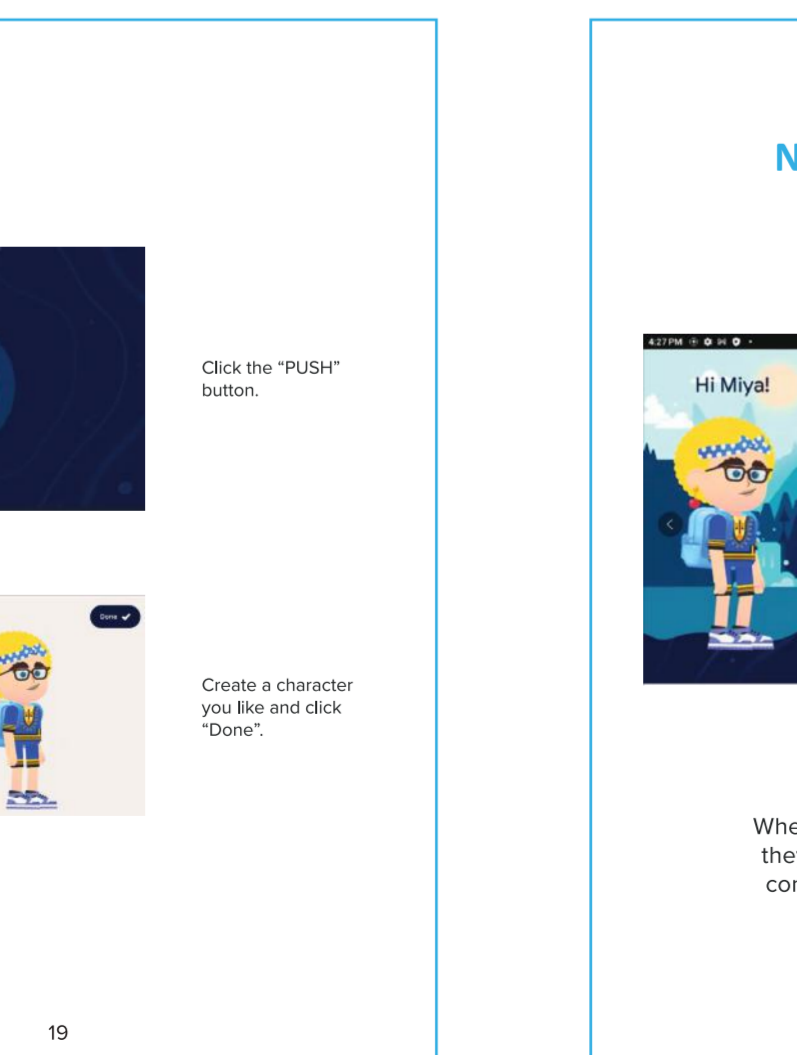
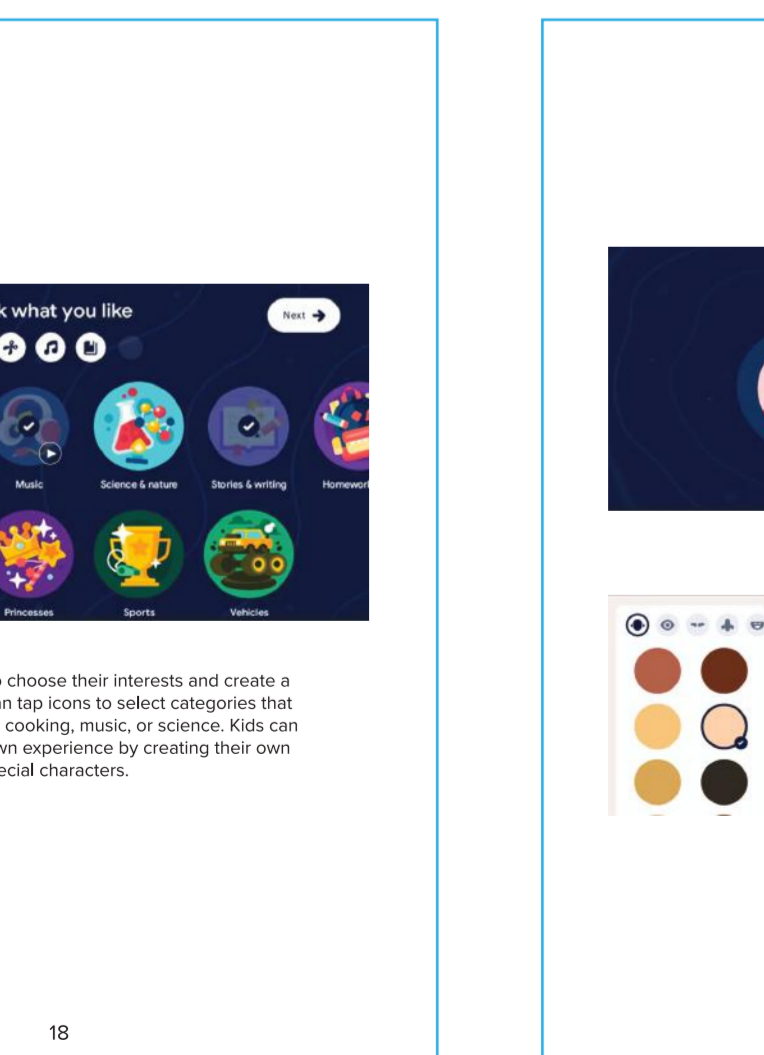
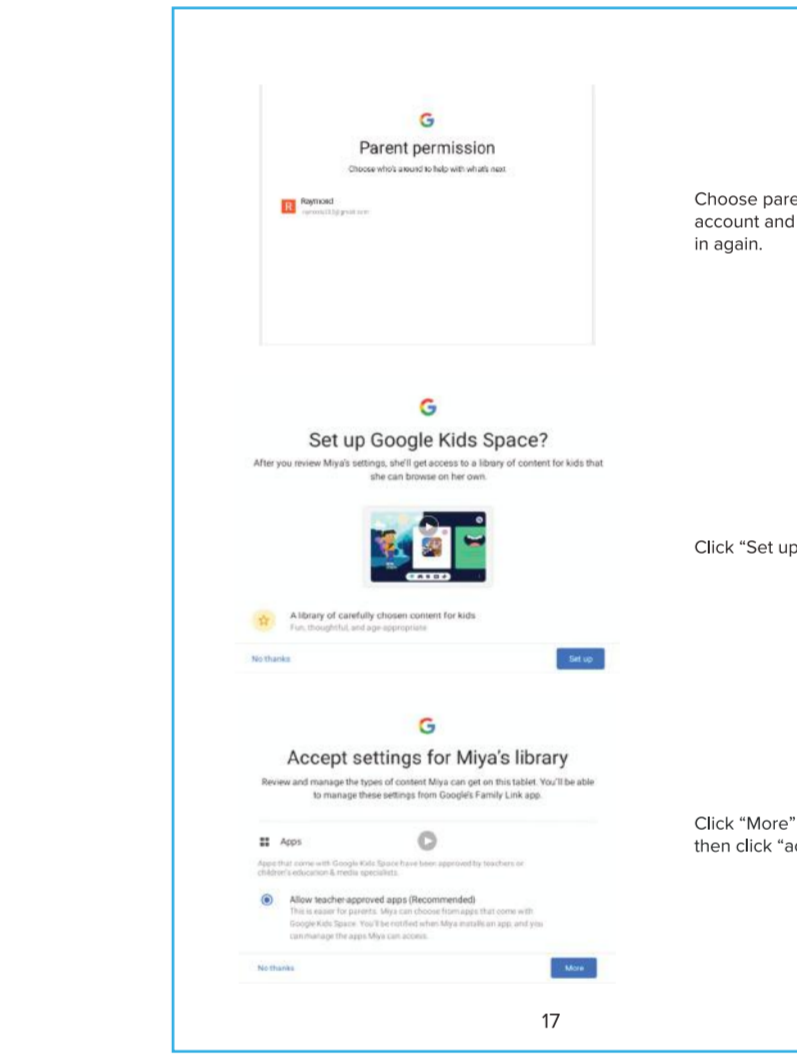
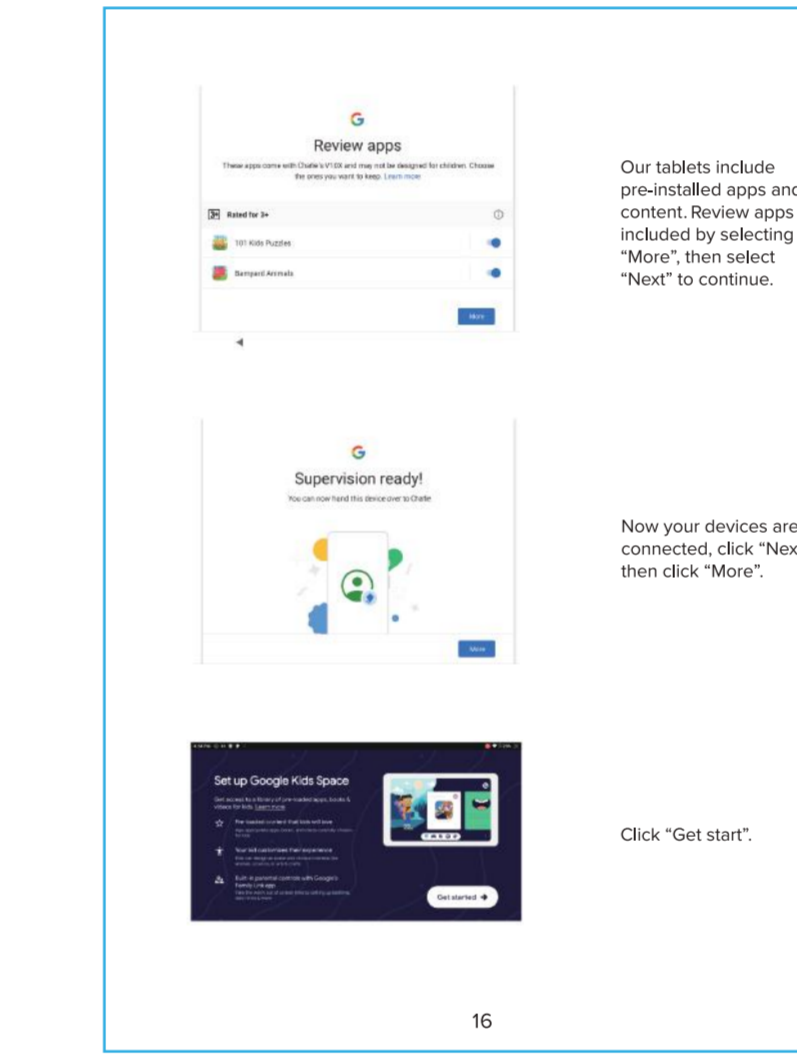
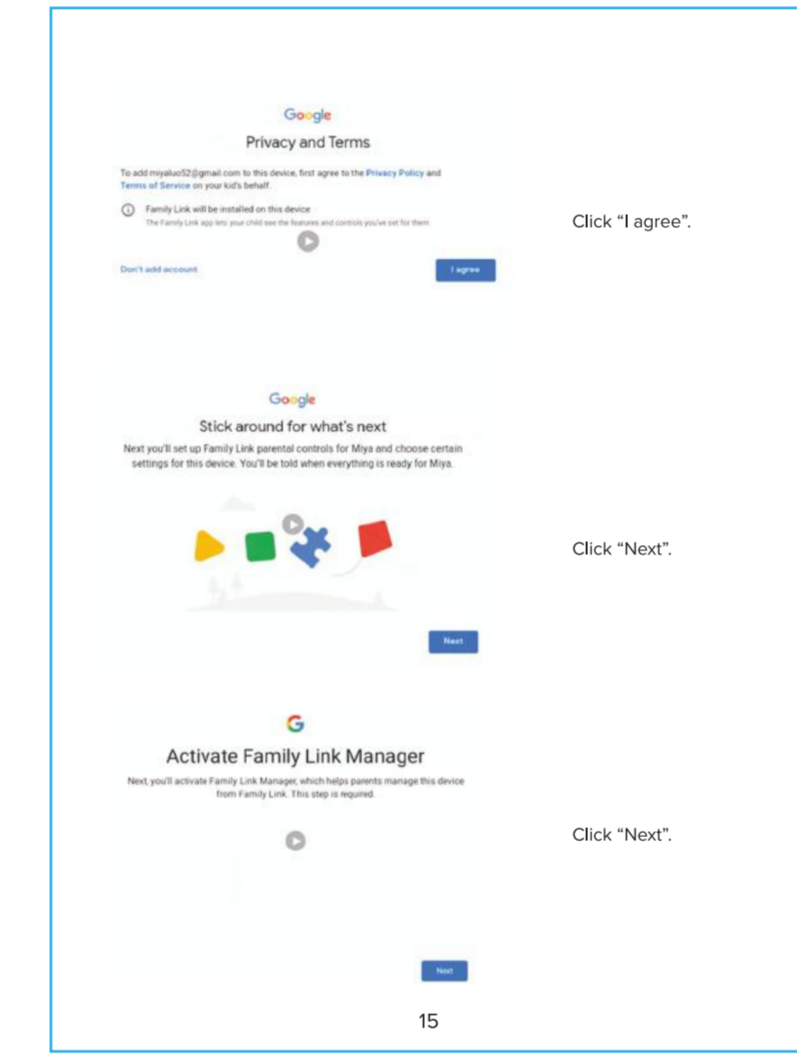
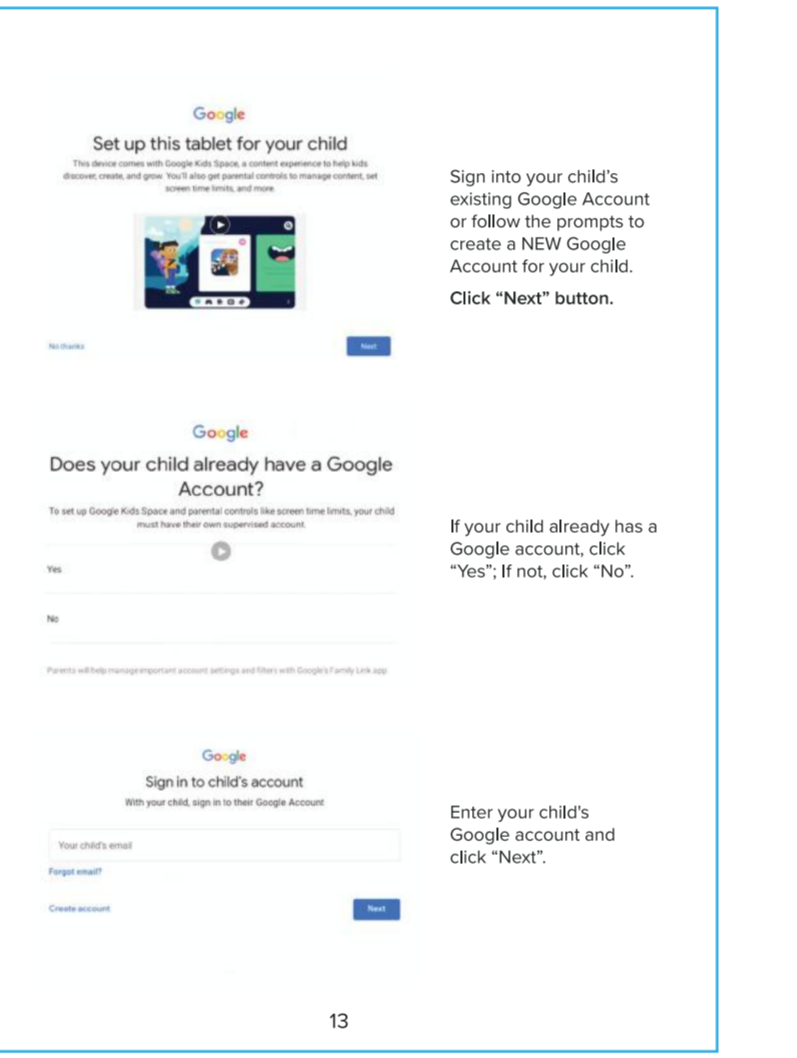
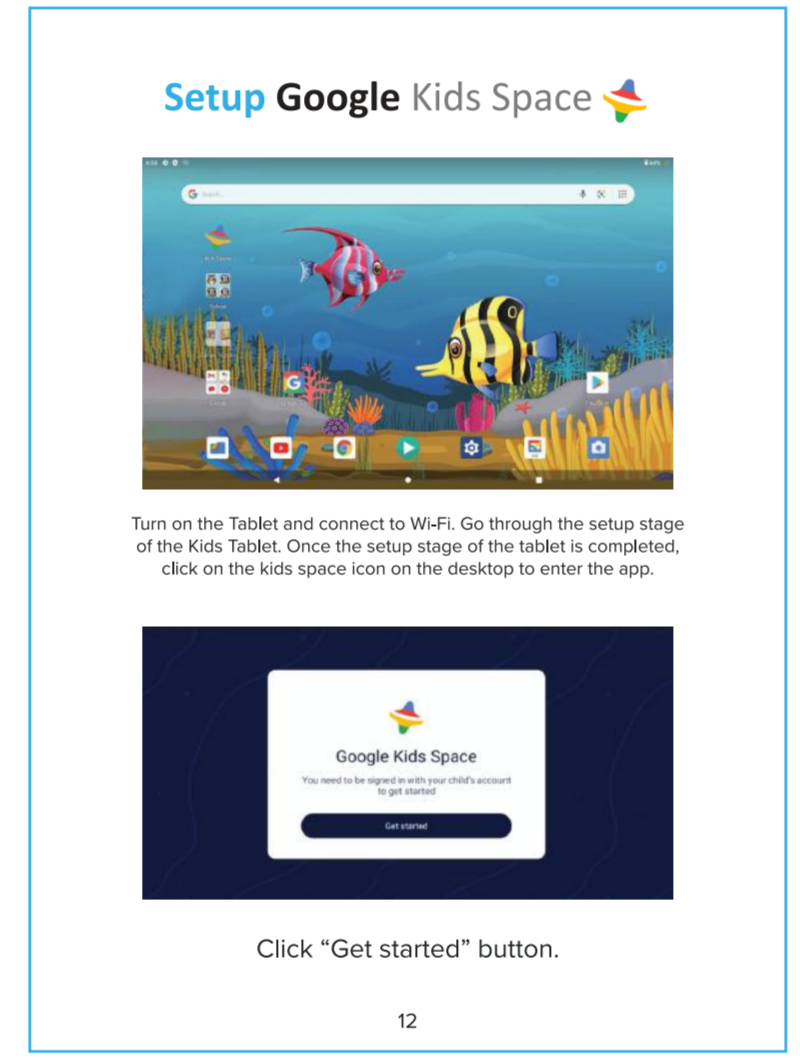
Google Service Quick Setup

1. WiFi connection required to access Google Services. First connect to a network.
2. Sign in with an existing account or create one. You can create a new account for this child that is linked to an existing adult account. This allows the parent to be notified when charges occur or a new device is linked into.
3. The Account Added screen provides confirmation that the account has been added.
4. Additional services such as "Backup to Google Drive" can be accessed to save and preserve data such as pictures and files.
5. Sign in to Google Play Store to update existing apps or download new apps.

Google Kids Space software and Google Services may change or update without any advance notice. Parents are responsible for additional installed apps or websites allowed on this product. Always backup any important data before installing the tablet.

Control Panel Setting

1. Network & Internet — Change Wi-Fi settings, check your network configuration, airplane mode, or VPN (virtual private network).
2. Connected Devices — USB Charge phone, transfer files, etc. Pair new device, turn on Bluetooth.
3. Apps & Notifications — Set permissions & default apps.
4. Battery — Set power saving modes.
5. Display — Set brightness, wallpaper, sleep timer, auto rotate screen, font size, display size.
6. Sound — Set volume level or do not disturb.
7. Storage — Hide drive information.
8. Security & Location — Google features to help protect or find the device.
9. Users & accounts — Adding and modifying accounts.
10. Accessibility — Set screen readers, display, interaction controls.
11. Google — Set services & preferences.
12. System — Set languages, time, backup, updates.



Congratulations Now You are all done!

When children open Google Kids Space, they will find a custom history of quality contents such as recommended apps, games, books, and videos.

Manage Google Kids Space settings & apps

You can manage your child's Google Kids Space apps on your child's device and through Family Link.

1. In the bottom right corner, press and hold the Parent menu (⋮)
2. Tap "Device Settings"

To Access from Family Link

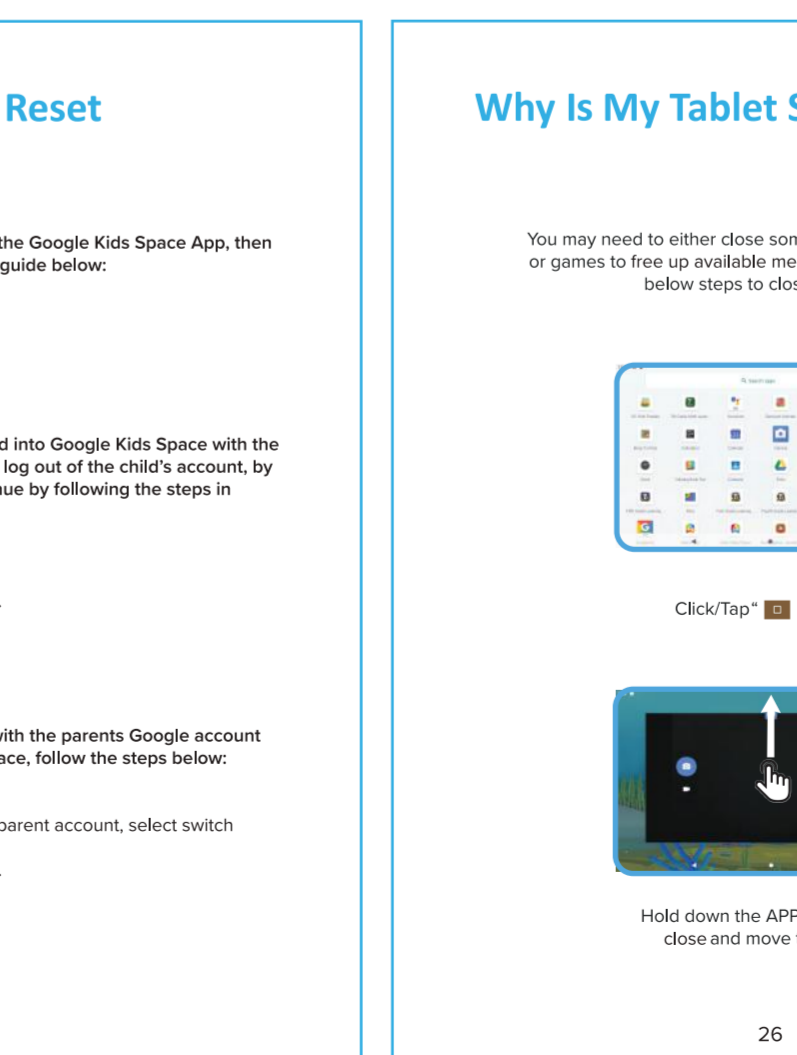
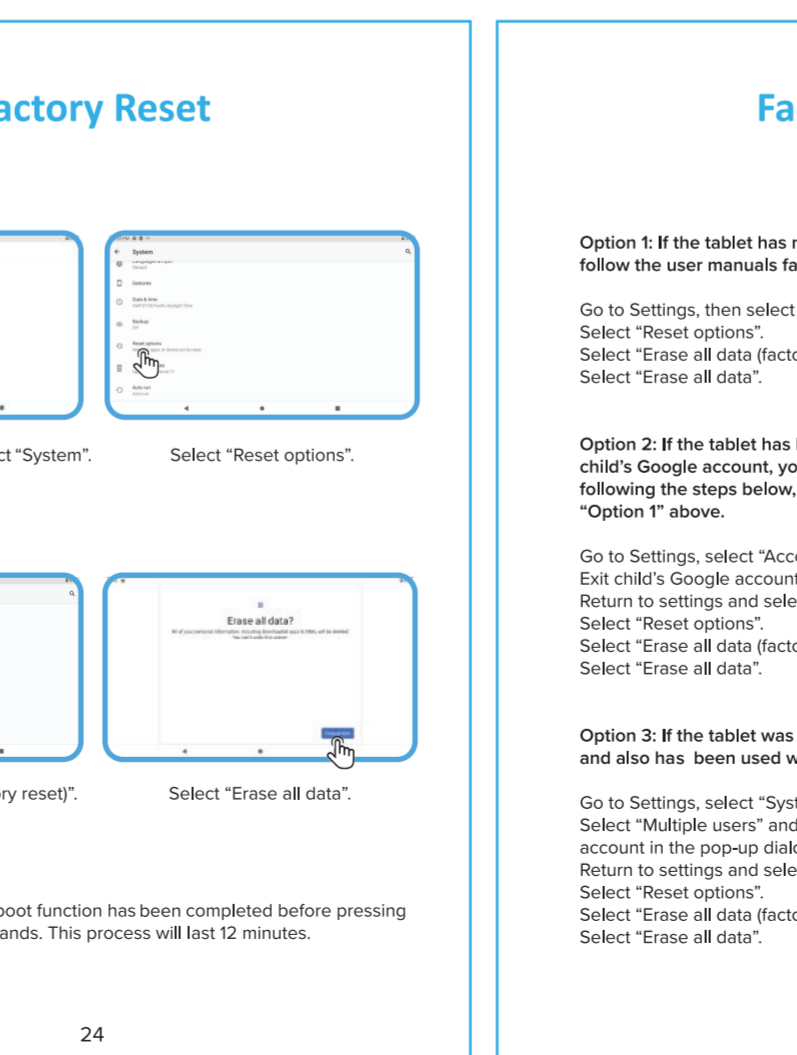
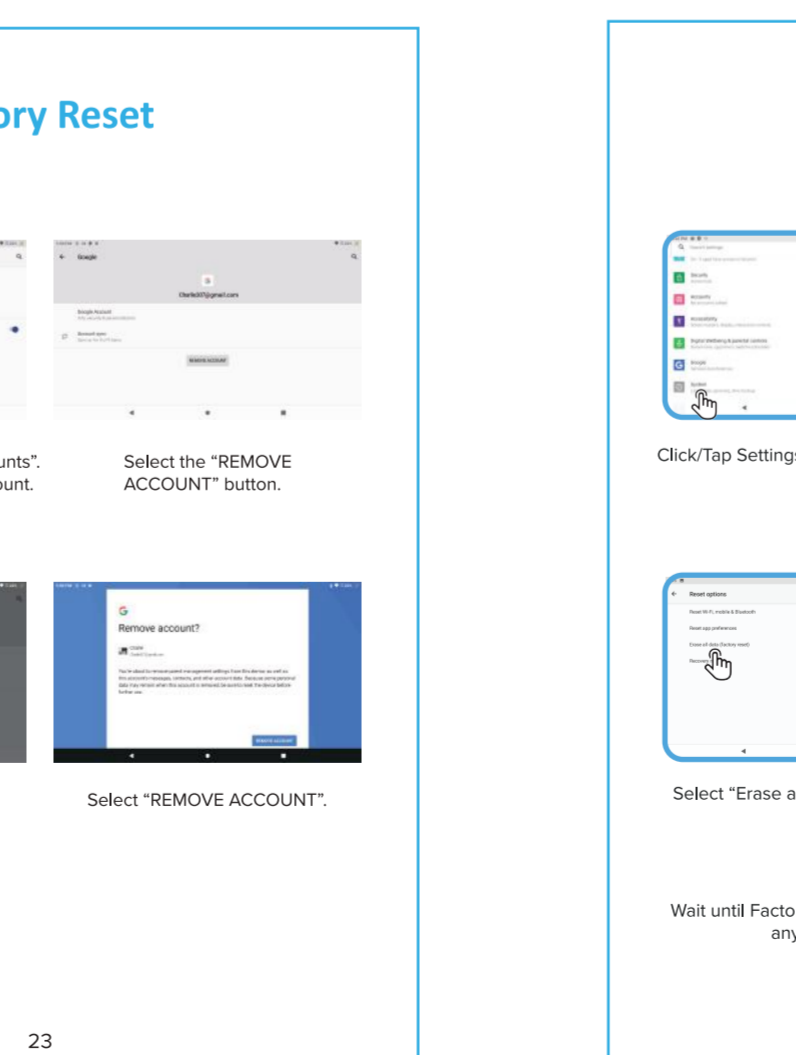
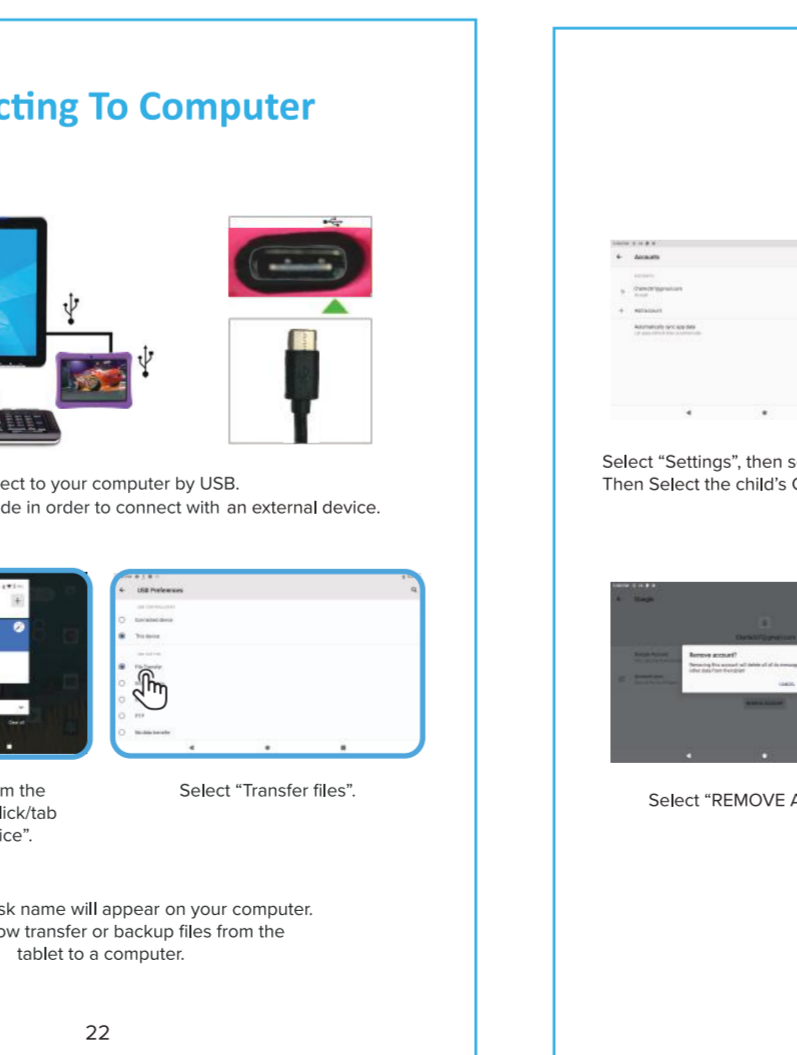
1. Open the Family Link App
2. Select your Child
3. Go to Manage Settings
4. Select Google Kids Space Settings

In Family Link, you control settings like whether parental approval is required before your child installs apps recommended by Google Kids Space and if your child gets recommended apps with ads.

Turn off the Google Kids Space App

1. In the bottom right corner, press and hold the Parent menu (⋮)
2. Select "Parental controls".
3. Select "Google Kids Space". Then "Turn off Google Kids Space".

You can use the Family Link App on your Android or iOS device to manage Google Kids Space settings. More details about Kids Space on google.com/kidsspace.



Why Is My Tablet Slow or Frozen?

You may need to either close some of your open applications or games to free up available memory on your tablet. Follow the below steps to close the APPS.

Click "Tap" button.

Hold down the APP you want to close and move to close it.

Trouble Shooting

Issues	Solutions
Battery is draining too fast	Adjust screen brightness to a lower setting; close unused apps.
Slow or unresponsive programs	Close unused apps; clear app cache and do a factory reset. Set timer to select "Wipe data/factory reset", and then click the power button to confirm.
Network connectivity issues; no WiFi connection	Restart network connection; toggle airplane mode on/off.
Tablet is hot or overheating	Clear unused apps; clear app cache.
App crashes	Reopen app; update app through Play Store.
Unresponsive screen	Restart tablet by holding power button for 8 seconds.
Google Play Store crashes	Clear app cache and restart.
Apps won't download from Play Store	Clear Play Store cache; open app settings and clear local search.
Can't turn tablet on/off	Hold power button for Power Menu options.
Touch screen issue: not responding touch	Low battery power; check for physical damage.
Battery does not hold a charge	Check speaker cable; inspect power button if stuck.
Sound is low	Check speaker port for blockage.
Camera or SD Card not working	Corrupt Software / Revert to factory default.
Can not connect to WiFi	The tablet does not support 5G WiFi, it can only connect to 2.4G WiFi.
Can not be charged	Check if the USB damaged/ Replace the charger.
Tablet stuck/frozen	Insert a pin to press the reset button and restart the tablet.

Issues	Solutions
Cannot enter the system	1. Press and hold the volume "+" and don't release it when the power is off, then press and hold the power button for 8-6 seconds. 2. After entering the next interface, use the volume key to move the cursor to select "Wipe data/factory reset", and then click the power button to confirm. 3. After entering the next interface, select the "Yes" option, and then click the power button to confirm. 4. After entering the next interface, click the power button to confirm, and the tablet will automatically restore the factory settings.
Kids Space delays or white screen when reboot.	Everytime Google Kids Space reboots, you may experience delay or white screen, which is normal because the Kids Space is more like an independent OS system rather than an APP; it needs time to pre-load.
Shows "ERROR" Message when you install setup the Google Kids Space.	Please don't click on any buttons before the setup stage is fully completed, otherwise you may receive an "ERROR" notice, and you may need to restart the setup process.
Other issues related to Google Kids Space	Please visit google.com/kidsspace

Contact Us
Customer Service Email: support@contixo.com
Or visit our website: www.contixo.com

©2022 Contixo Company. All rights reserved. Contixo® the Contixo logo and associated characters, trademarks and design elements are owned and licensed by Contixo Inc.