



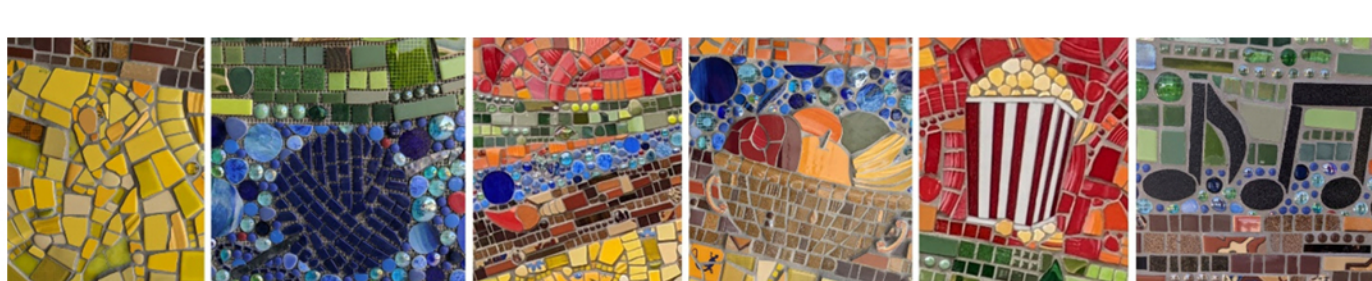
Dear

Welcome to our summer newsletter. It's been a productive couple of months at Piece by Piece and we are excited to share some highlights with you! Welcoming artists and guests to our new home in South LA has been nothing short of amazing. Please keep an eye out for future events. Until then, please enjoy this newsletter!



Our team was proud to create this unique mural for an active community/senior center in the city of Paramount. In discussions with city officials, there was a desire to have vibrant colors flowing across the entrance.

Within the design, a series of hidden features depict activities happening in the space. For example, a woman exercising to represent fitness; a ball of yarn for knitting and crochet classes; a bowl of fruit for nutrition; a paintbrush for art; a bag of popcorn for movie night; and musical notes for dance and music.



Icons in mural (L to R) Fitness; Knitting; Art; Nutrition ; Movie Night; Music

At Piece by Piece, our focus is on recycled materials, which gives us an incredible palette of texture and images to add a sense of playfulness to each project we create. In this mural, our artists had fun finding unique animals and scenes from repurposed plates and ceramics as well as textured and iridescent glass.

The community center is located near a park and a school. On the days of installation, we heard many great comments and compliments from visitors to and around the center.



Piece by Piece artists (L to R): Jose; Victor; Instructor Luz with June; Vickie; and Instructor Luz with installer Juan

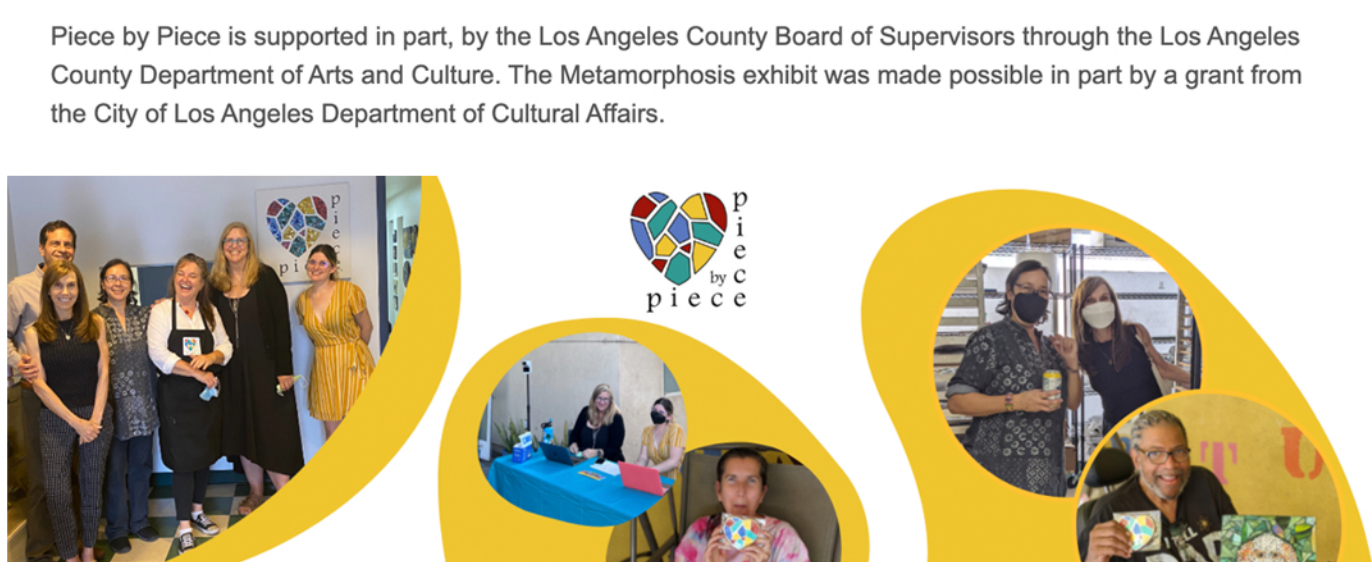
We were honored that the city hosted a special unveiling of the mural with Mayor Vilma Cuellar Stallings recognizing our artists and our program. We are grateful to the city of Paramount for their support and enthusiasm on this project.

See more photos on our [blog](#).

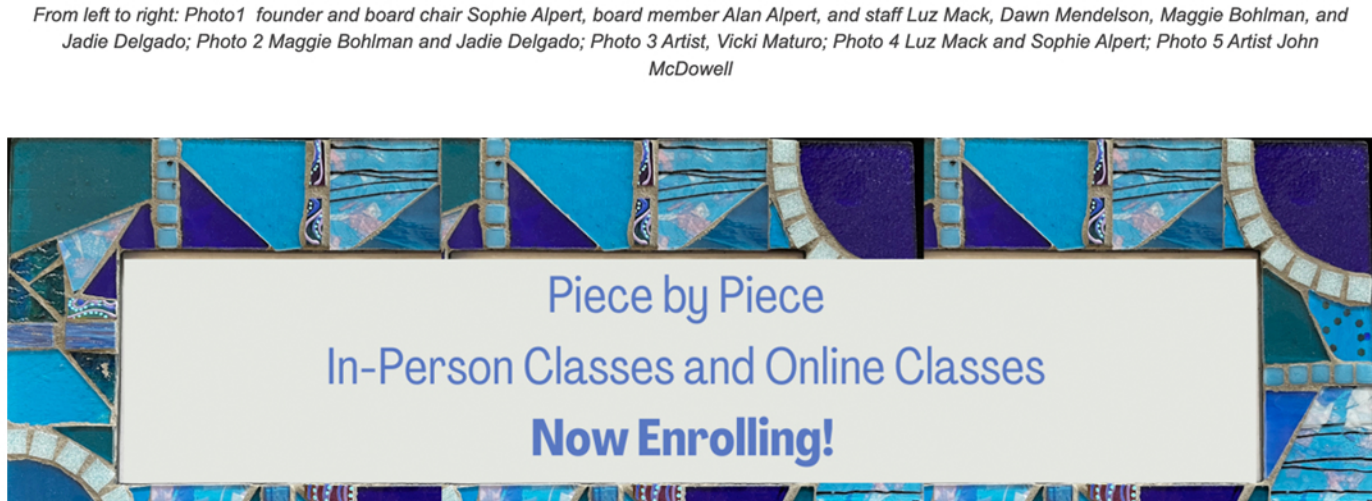
It was also an opportunity to tour Piece by Piece's new headquarters. In April of 2022 Piece by Piece moved our offices, studio space and classrooms to one shared space on the main floor of the Broadway Village 2 apartments. We are thrilled to be in our new spacious home, and are embracing this new cycle of life for Piece by Piece. Fortunately, commissions have been rolling in and we are busy enough that we also utilize a second studio space in Hollywood dedicated to commissions.

Thank you to those who came out to say hello, enjoyed some food and drink with us, toured the new space, and purchased some of the art made by the artists. We truly wouldn't be in our 15th year without your support. We look forward to welcoming friends and supporters at Broadway Village for many years to come.

Piece by Piece is supported in part, by the Los Angeles County Board of Supervisors through the Los Angeles County Department of Arts and Culture. The Metamorphosis exhibit was made possible in part by a grant from the City of Los Angeles Department of Cultural Affairs.



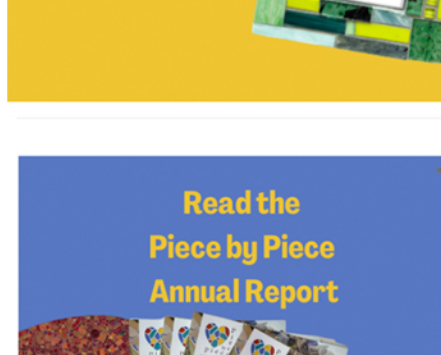
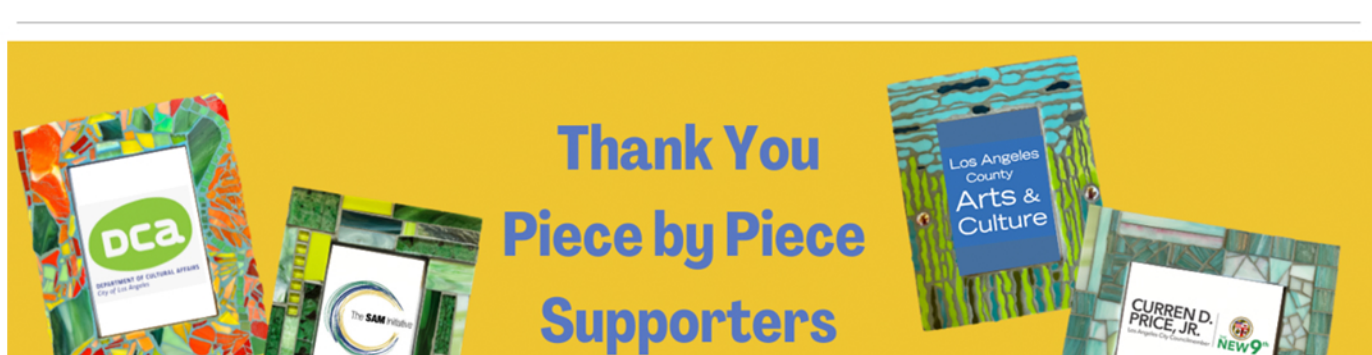
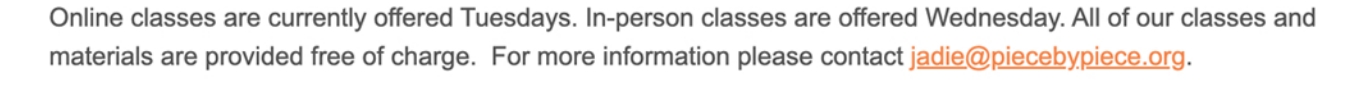
From left to right: Photo1 founder and board chair Sophie Alpert, board member Alan Alpert, and staff Luz Mack, Dawn Mendelson, Maggie Bohlman, and Jadie Delgado; Photo 2 Maggie Bohlman and Jadie Delgado; Photo 3 Artist, Vicki Maturu; Photo 4 Luz Mack and Sophie Alpert; Photo 5 Artist John McDowell



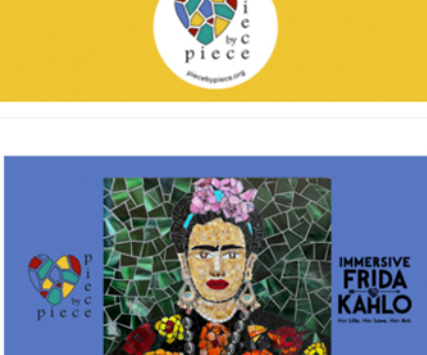
Piece by Piece workshops nurture connection and creativity, bringing improved wellness to the lives of individuals facing complex issues that have made them vulnerable to homelessness and/or economic insecurity. Our community fosters hope and empowers individuals by providing opportunities which help reduce barriers to success. Piece by Piece enables individuals to develop skills, individual talents and work towards reaching their full potential. Our classes are open, affirming and a welcoming place for all.

Many of our participants start their mosaic journey in the Beginning Mosaic workshops. Through a series of thoughtfully planned sessions, new artists learn technical skills and expand their creative voices. From basic cutting to the process of design, from skill building to arts wellness, participants thrive in this supportive environment.

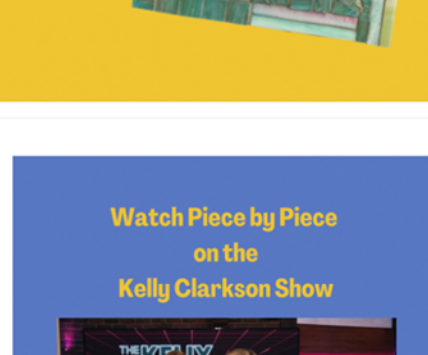
Online classes are currently offered Tuesdays. In-person classes are offered Wednesday. All of our classes and materials are provided free of charge. For more information please contact [jadie@piecebypiece.org](mailto:jadie@piecebypiece.org).



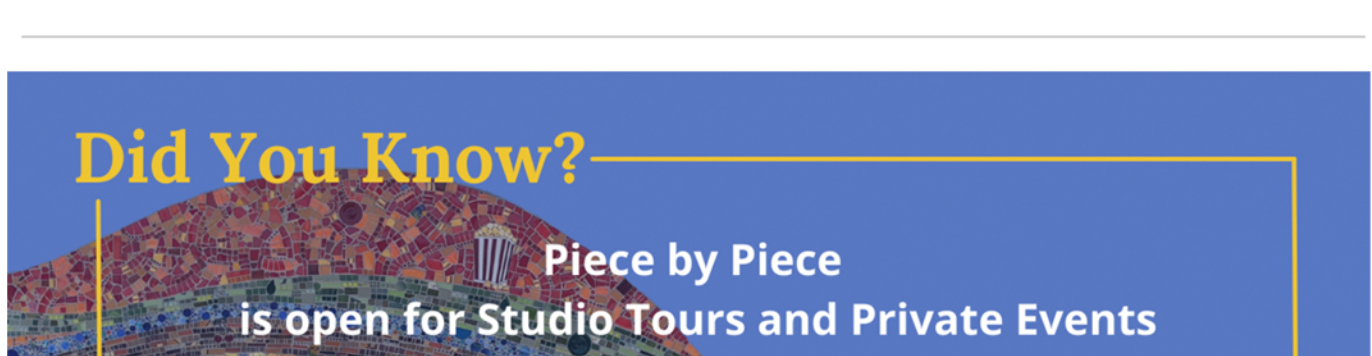
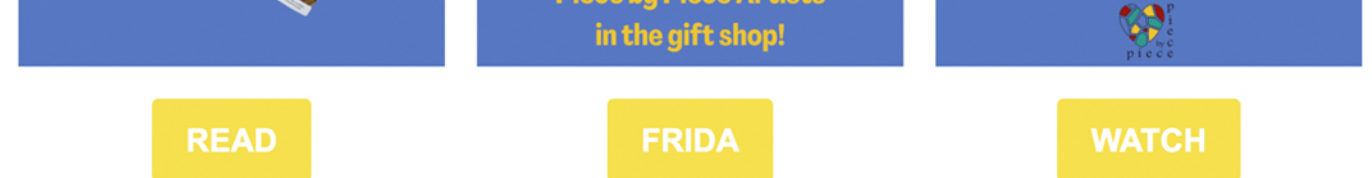
READ



FRIDA



WATCH



**Our Contact Information**  
 Piece by Piece  
 1815 S Soto Street  
 Los Angeles, CA 90023  
 323-351-6805  
<http://www.piecebypiece.org>

[Unsubscribe](#) | [Manage email preferences](#)



Donate!