

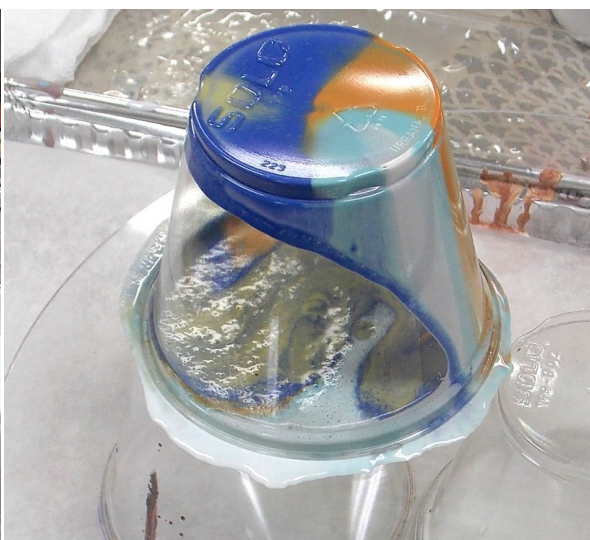
Unique Glass Colors Presents Pouring Enamels Technique Ten

Still exploring densities. Very pleased with the results. The difference? More water!!!!!!!!!!!!!! Meant to only do three samples but had some extra color and thought “what if” and did a fourth and then and then just had to use up that last bit of color that was mixed! So this one is a big tutorial. There wasn’t one of them that could be left out as they all had a lesson of their own to tell. So you will need to settle in with a cup of coffee or maybe wine to read through all of this!

Colors used: NT Colors—1951 Brite White, 1956 Dark Blue, 1958 Turquoise, 1998 Golden Orange
“D” Series: 973D Orange (contains lead and cadmium)

Layering Mix, Butane Torch, Fan Brush, Straw

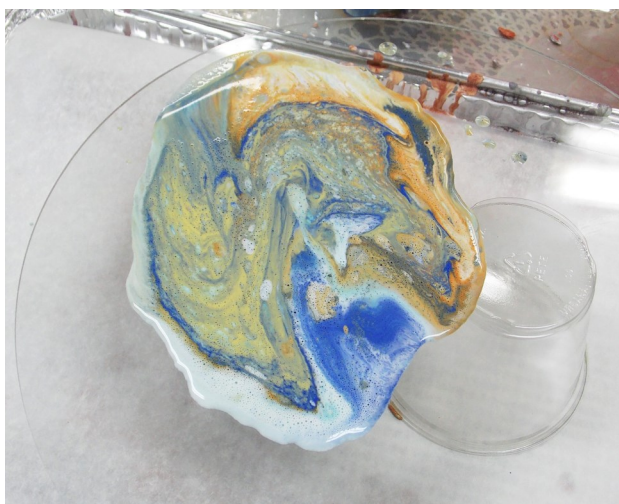
Start off by mixing large cups of color with a 2:2 ratio of color to Layering Mix. Will use smaller cups for the different pouring colors, varying the amounts of water added to the smaller pouring cups.



This photo shows what a **Dirty Pour Flip** looks like. Let it sit there until all the color has dripped down the sides of the cup. You can also see how the colors were added to the cup to start.

Decided to show the set-up in this tutorial. On the left will be a **Triple Dirty Pour** on an 11” circle and on the right a **Straight Pour** on a 6” circle. All colors mixed to the 2:2 ratio. Am using a tablespoon as my measure. Parchment paper underneath the pour area to catch the run off that when dried and peeled off, can be used in other projects.

Mix colors in a new, smaller cup, with water in the following ratios. First number is color, second Layering Mix and third is the amount of water to add. By using separate cups you save the original mixes to be used full strength or with different ratios of water to color. Brite White, 1 Tbsp.—Orange, 1 tsp.—Golden Orange, 1/2 tsp.—Turquoise and Dark Blue, 1/4 tsp each.



Lift cup up with a twist and let the drips go wherever they land!



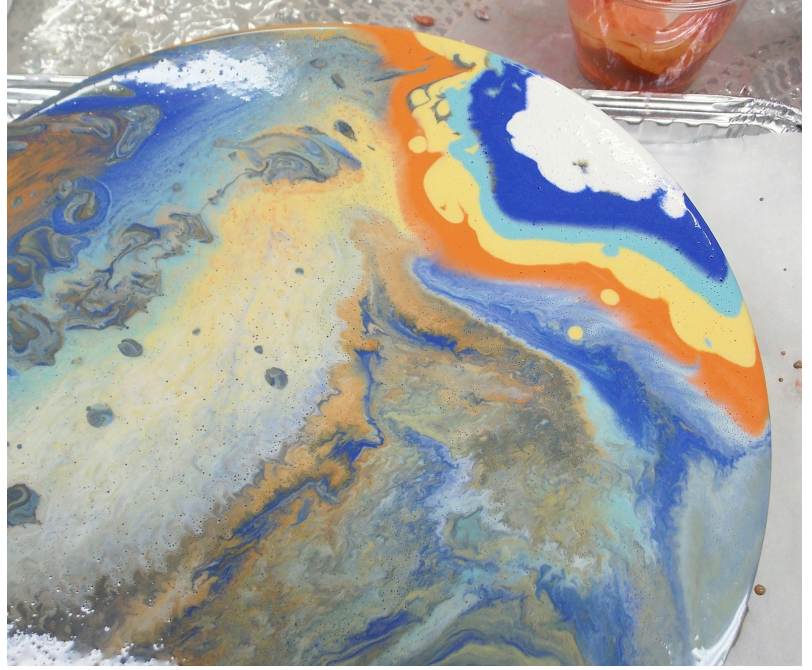
Prepare another cup with a **Dirty Pour** adding 1/4 tsp. more water to each color except the Brite White. Change your order of adding colors, and just pour them right onto the surface.

Second section. This piece is going to have color added in three ways.

Unique Glass Colors



Tilt a bit to get the colors moving. The left side is the **Dirty Pour Flip** cup and the right is the **Dirty Pour Dump**. Do you like the technical terms?



In the space left open, pour on the colors individually in whatever order you like.

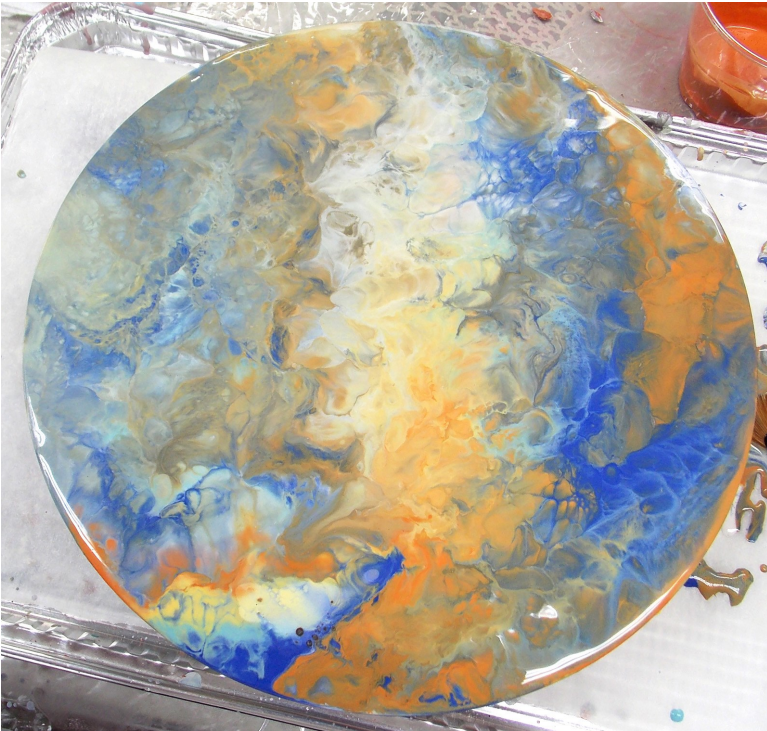


Use a fan brush or fork or anything with a serrated edge and drag through the **Straight Pour** color to begin to blend out the lines of color. You can see here how different each of the pours look using exactly the same colors.

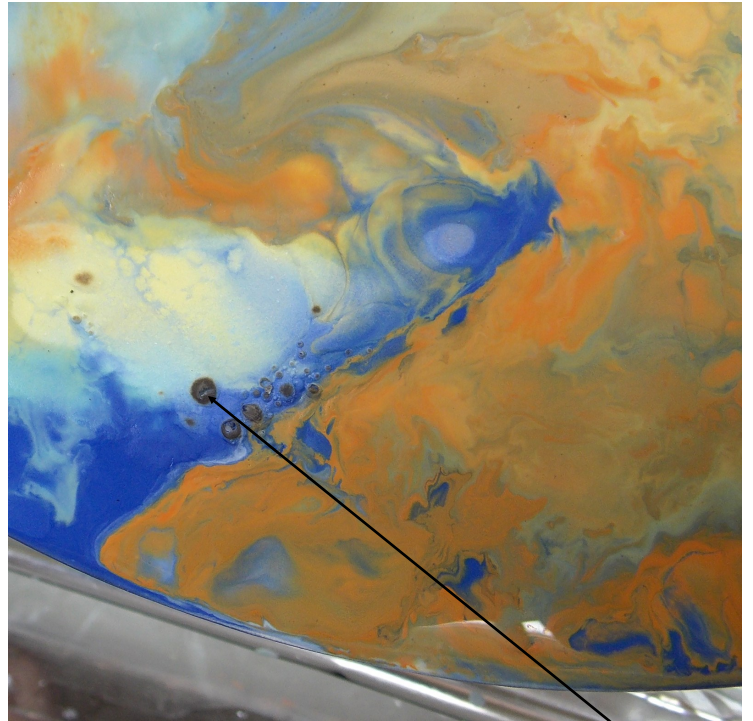


Now use the straw to blow the color around until the colors form a pleasing pattern.

Unique Glass Colors



Torch. Go back and forth and around in circles. Do you have to torch? Nope, I just like it. You can stop at any point in the pour if you like what you have. Remember—no rules!



I have said repeatedly to not to get too close with the torching and this is why. The wet color will actually burn! Luckily, when this piece fired all that was left was a thin area of color.



Dried color.



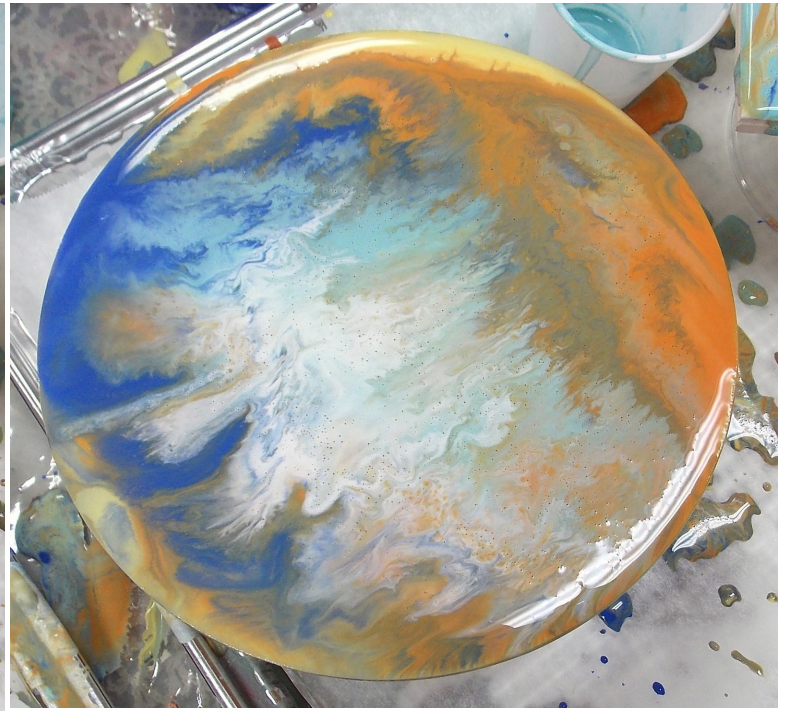
Fired

All pieces in this tutorial fired to 1465F.

Unique Glass Colors



This one is a **Straight Pour**, then use a fan brush to drag the color across the piece. Do not touch the glass, keep the brush just in the color.



Use the straw to shift the colors.



Torched



Dried color

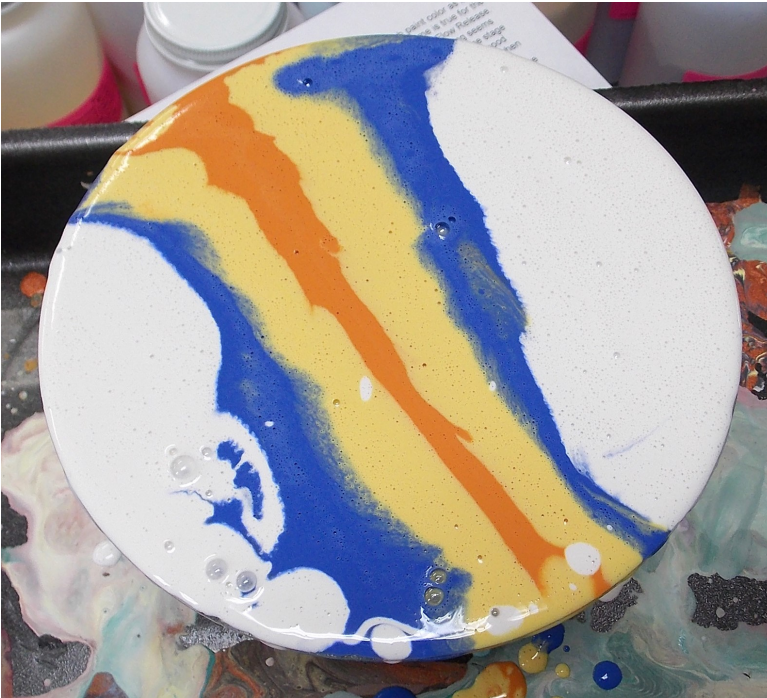
Unique Glass Colors



Fired



Here is what the piece looks like from the back after firing. Thought this might be interesting to see.



Still had some color left so mixed up more Brite White and added a bit more water to it and to all the colors left. No measuring, just drop in some water. Be daring! Poured the Orange first then the Golden Orange, then the Dark Blue and filled in with Brite White.

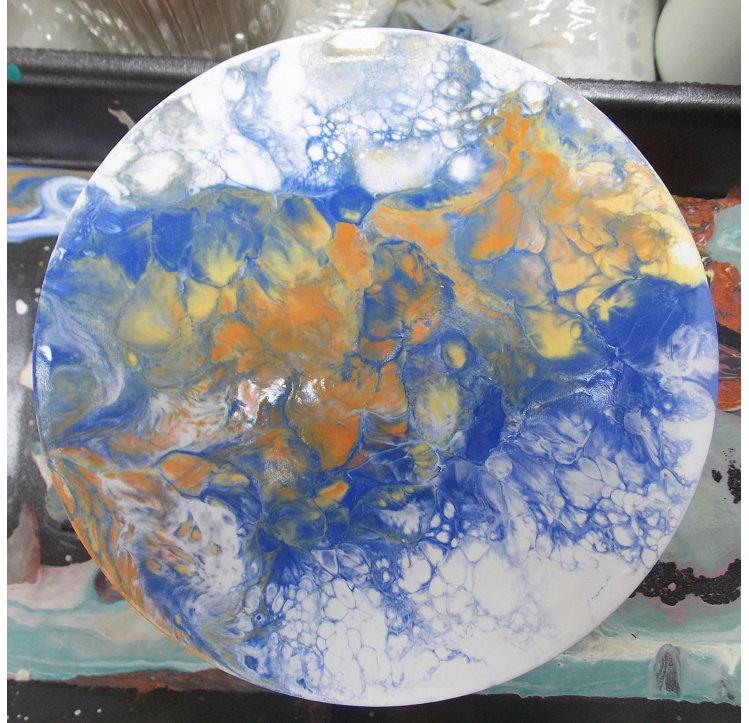


Tilted and used the straw to get some movement. Some cells started to form on their own.

Unique Glass Colors



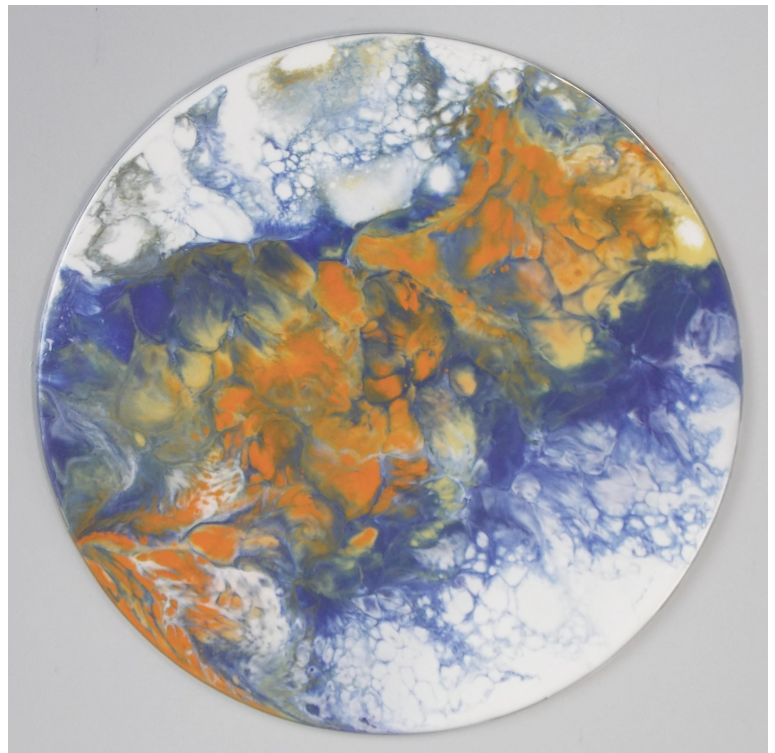
More cells forming with just the addition of more water in the color.



Torching really brought out wonderful cells in this one. Love that lacey look of the Dark Blue into the Brite White.



Dried color.



Fired

Unique Glass Colors



Just poured the colors left onto a white glazed tile 4x4 and tilted. Dropped in a bit of Golden Orange at the top (could be birds or fish!) to add some accent color. Second photo is dried and third is fired.



Okay, one more!!!!!!!!!!!!!!!!!!!!!! Dripped all the colors out of what was left in the pouring cups and pushed the color with my finger into any area that did not have color. Then used the straw for the second photo and last photo is shown fired.

We are going to frame our double doors in our foyer at UGC with all these wonderful accent tiles! We may even start a second business creating custom accent tiles! Think about that seriously. We have a lot of Commercial Customers who create custom tiles and they are very excited about this technique. They can be all glass or use the commercial tiles like we have done here that are readily available at the home improvement stores.

Most of all—have fun doing this technique!