

Our Derbyshire Venue

Don't leave home without these instructions

Please use the following details to arrive at the woodland 15 minutes prior to your course start time to enable us to make a prompt start. While the course is held in a rural location the nearby towns and surrounding motorways can cause significant traffic congestion at times so please allow plenty of time for your journey.

Setting

The course takes place within 650 acres of woodland that form part of the Haddon Hall estate near Rowsley. The woods boast a long list of wildlife, including red deer.

Under no circumstances should you go to Haddon Hall as this is a private residence for Lord and Lady Edward Manners. The course venue is situated over 3 miles away from their home, so please follow these directions carefully. If you need any assistance phone 07843064114.

Running late?

If you are delayed at all please contact us at the earliest possible moment on 07843064114 so we can try and plan logistically to get an instructor back to the meeting point. However, please note due to the rural setting and the safety considerations of the course late arrivals may mean that we cannot wait for you at the meeting point and you may not be able to take part in the course – In these situations late arrivals will be considered a cancellation on your part.

On arrival – stay slow and safe

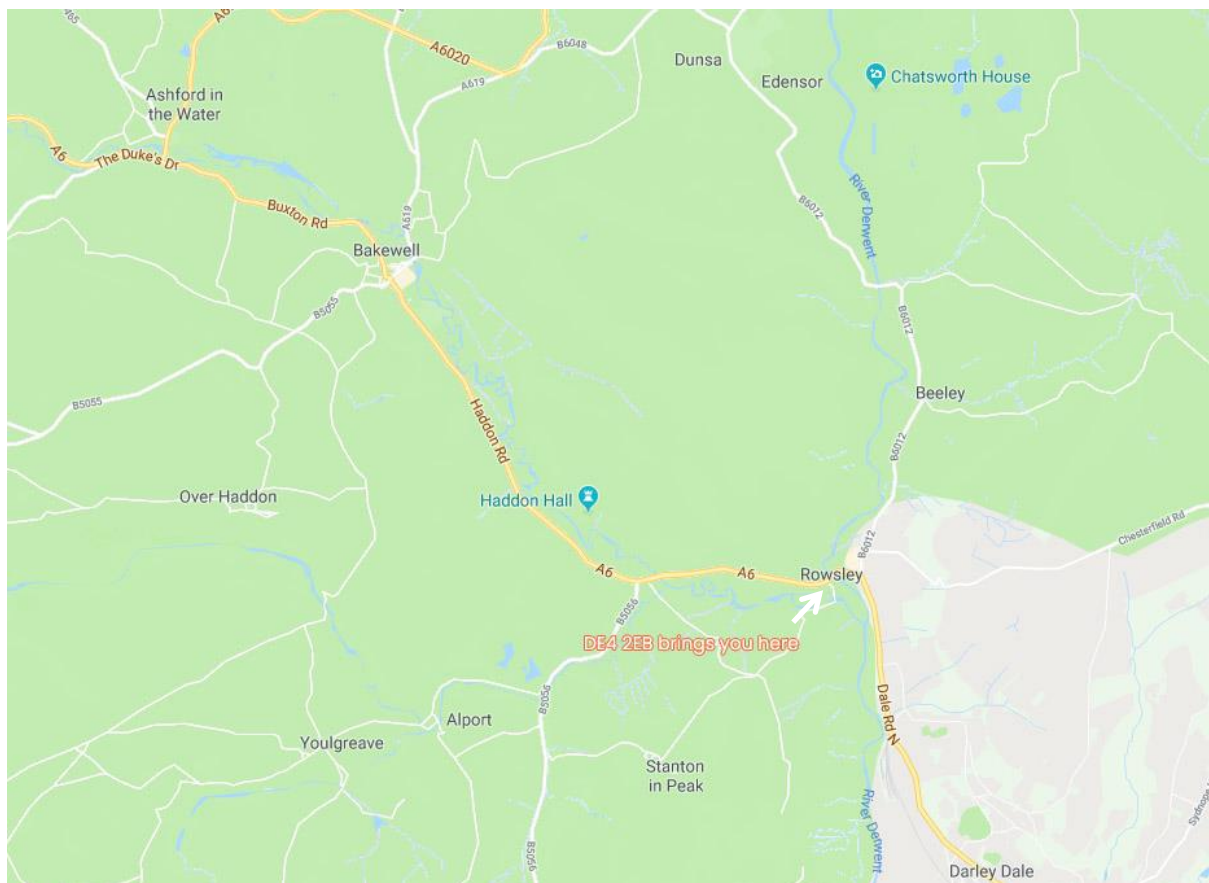
Access to the meeting point is via an unsurfaced track; we cannot stress enough that you need to drive slowly. If you drive quicker than walking pace you may cause damage to the underside of your vehicle and Woodland Ways and Haddon Hall Estate will not accept

responsibility for any damage to your vehicle as a result of your driving. If you are in any doubt then park at the first gate mentioned in the following instructions and continue on foot, however, normal cars (except sports cars) will make it down the track at a walking speed. **Please do not wander into the woods before an instructor has arrived as there may be shooting taking place.**

Directions

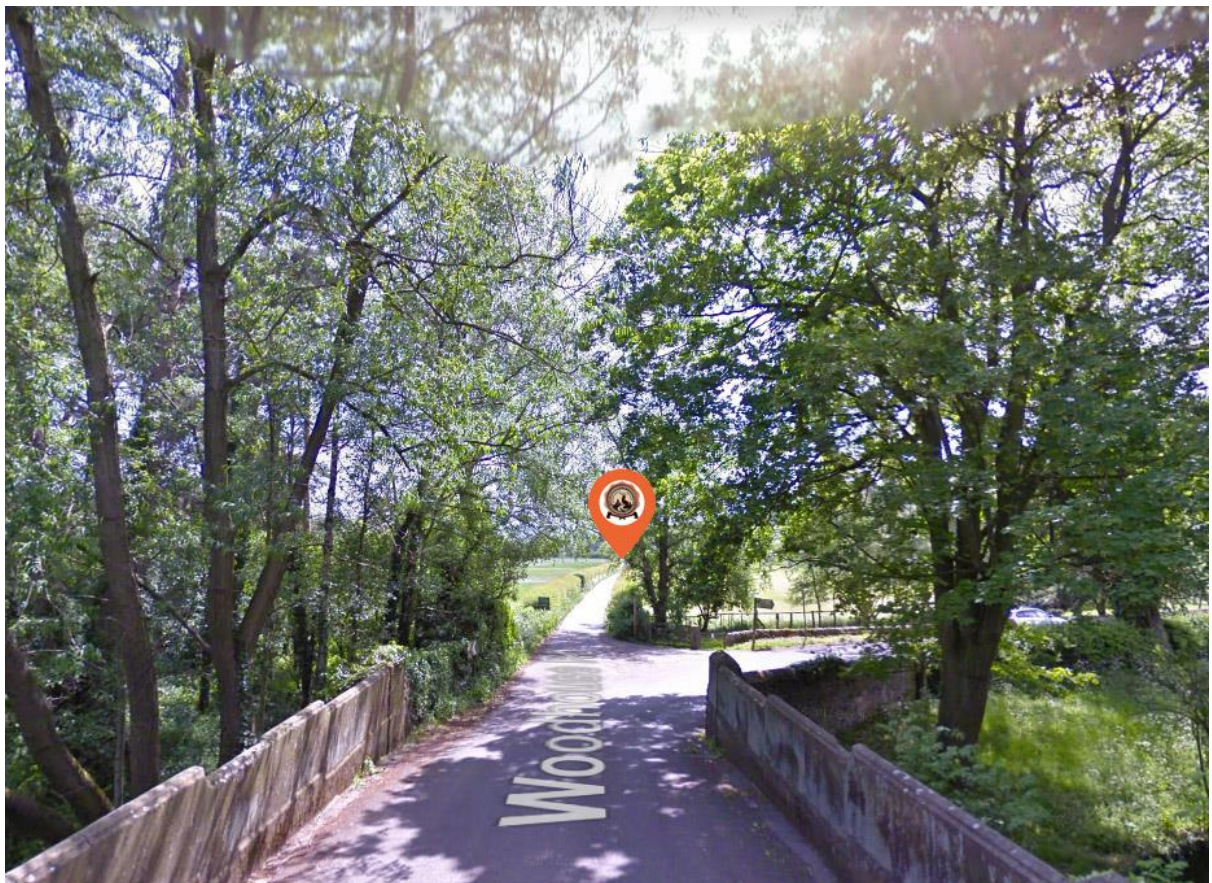
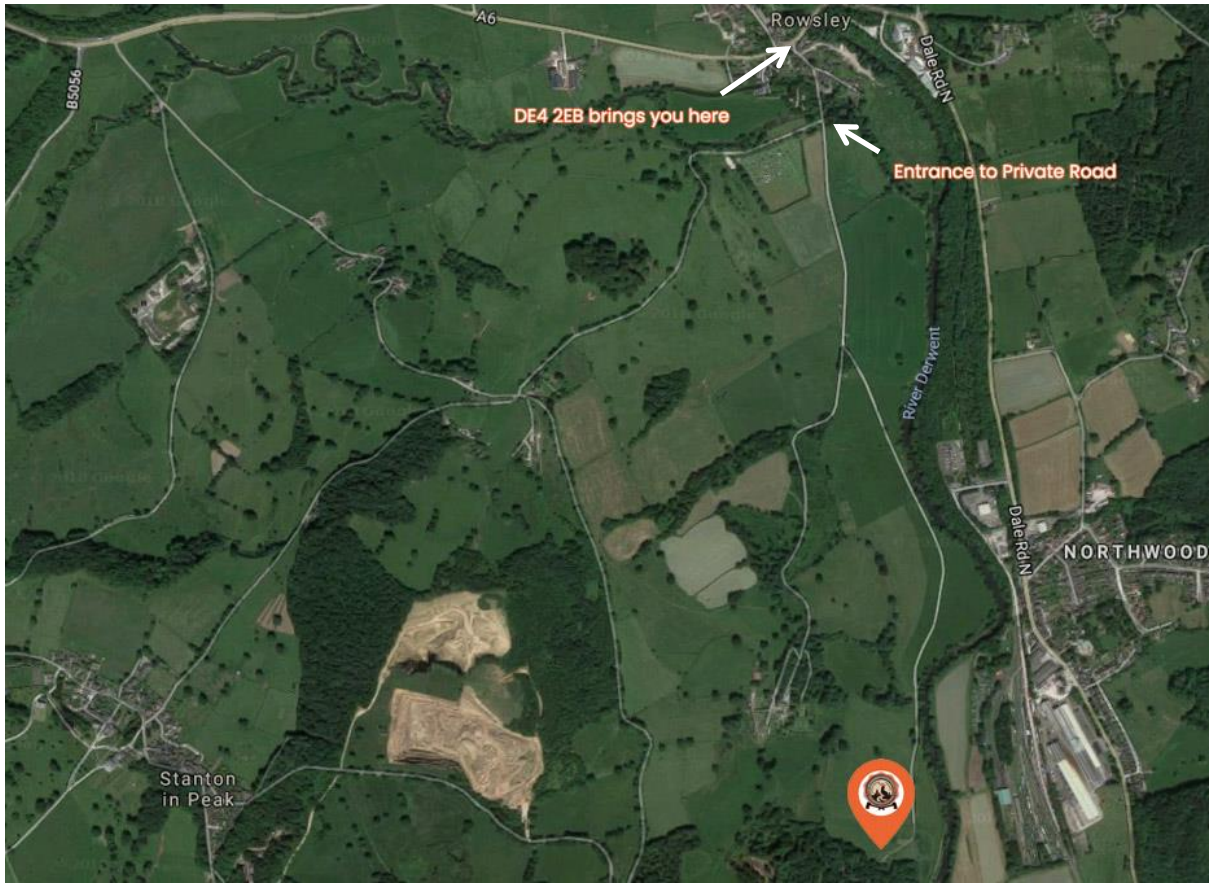
By Private Transport

If you are using a Sat Nav it will only help you so far as the nature of woodland means it does not have a post code so please bring these directions with you. However, the easiest place to find is The Peacock Hotel, Rowsley, DE4 2EB. For those not operating with a Sat Nav aim to get yourself onto the A6 between Matlock and Bakewell – Rowsley is a small village situated approximately half way between the two..



Directions from The Peacock Hotel

1. Immediately opposite The Peacock Hotel is a minor road.
 - a. If coming from Bakewell The Peacock is on your left and so this minor road is on your right
 - b. If coming from Matlock the Peacock is on your right and so the minor road is on your left.
2. Drive up this road for approximately 200 metres, past the school on your left. The road veers sharply right with a private road directly ahead of you. **Turn down the private road. There is no public access beyond this point at any other time so if you are on a recce prior to your course this is as far as you can go.**
3. A further 700 metres down this paved road turn down a small farm track on your left. There will be a gate with a fishery sign displayed and a Woodland Ways sign nearby, if the gate is closed please close it again behind you to prevent the escape of livestock, if it is open then please leave it open.
 - a. As stated earlier if you are in a very low slung car you will have to park here on the grass and continue on foot for just over half a mile. The farm track is passable in a normal car being driven at a walking speed
4. Continue to drive down the track for 600 metres, you will have the river on your left-hand side and you will pass a small wooden hut on your left, just beyond this hut is a further gate, pass through the gate – again, if the gate is closed please close it behind you to prevent the escape of livestock, if it is open then please leave it open.
5. Continue a further 400 metres and you will be at the entrance to our woodlands. Please park on the grass outside the woodlands making sure to avoid any area marked out or roped off.



Public Transport

Pre-planning your journey to arrive approximately 15 minutes prior to the start time of your course is crucial. The nearest train station is Matlock; this will then need to be followed by a taxi drive to the entrance of the private road which takes approximately 15-20 minutes but due to the terrain it is unlikely a taxi will take you any further so you will need to factor in additional walking time from there. Taxis are also not guaranteed on arrival at the train station so if this is your choice of transport please investigate and book in advance to avoid any unwelcome surprises. Feel free to ask us about the end time of your specific course as pre-booking a return journey may secure a better price. **Ask the taxi driver to take you to The Peacock Hotel, Rowsley, DE4 2EB – and then follow the directions above to the entrance of the private road.**