

TIMEMORE coffee

Specialize in original coffee equipment  
With philosophy of Profession+aesthetic  
Create valuable coffee equipment  
Help people enjoy slow living



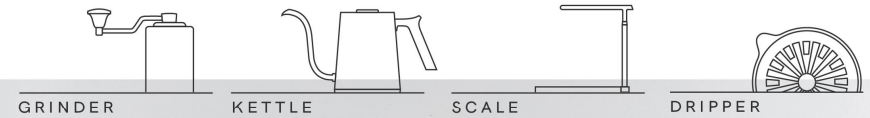
TIMEMORE®

### Extraction system

Our production line includes Pour-over kettle, Manual Grinder, Coffee scale, Coffee Dripper, French Press and Ice Dripper etc coffee brew makers.



TIMEMORE®



### TIMEMORE offer full solution to coffee life in the world

Asia: South Korea, Japan, Thailand, Philippines, Indonesia, Malaysia, Vietnam, India  
America: Canada, United States, Latin America  
Africa: South Africa  
Europe: Sweden, France, Poland, Czech Republic, Netherlands, Russia, Spain, Ukraine  
Middle East: Saudi Arabia, The United Arab Emirates, Kuwait  
Oceania: Australia, New Zealand



### CONTACT

✉ info@timemore.com

www.timemore.com



@TIMEMORECOFFEE

# BLACK MIRROR <sup>BASIC</sup>

BASIC COFFEE SCALE WEIGHING PANEL

PERFECT ACCESSORY FOR COFFEE BARISTA

## BLACK MIRROR <sup>BASIC</sup> BASIC COFFEE SCALE WEIGHING PANEL

### High accuracy High sensibility

Measure water and time to control the whole extraction easily and precisely

It's available for Pour-over and espresso



### Multifunctional assistant

With silicon pad  
Heatproof, Waterproof and Dirt-proof

Optional Portafilter stand  
Weigh ground coffee in Portafilter stably



### Black Mirror Minimal Design

Simplicity aesthetic, touch to start it  
Easy to read data on the LED screen in strong or weak light  
Fine matt texture to avoid scratches or fingerprints

### Serious QC

Accuracy 0.1g with precise timing  
Battery 1600mah 10 hrs continuous running  
3 seconds auto shutdown  
Type C Charge Port



GET TIMEMORE. MAKE GREAT COFFEE  
[www.timemore.com](http://www.timemore.com) @TIMEMORECOFFEE

# BLACK MIRROR nano

MORE COMPACT AND MORE ACCURATE



## BLACK MIRROR nano

TIMEMORE Black Mirror NANO ESPRESSO Coffee Scale

TIMEMORE ESPRESSO Coffee Scale  
Freely switch between three modes

### Compact Size and Simple Design

Its size is only 10 cm and it's easy to carry and easy to view data from multiple angles and no more reading blocked by vessels

### High accuracy and High response rate

Built in high-precision sensor, sensitive and fast data feedback



### Black or White Design

Elegant white and deep black  
TIMEMORE aesthetics for extraordinary pour-over experiences

### Freely switch between three modes



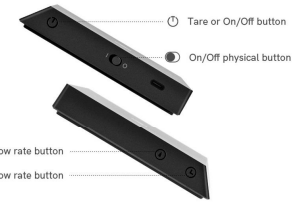
Espresso Mode



Pour-over Mode



Regular Mode



### Physical on/off button

Buttons are on the left and right sides of the scale. Clear button indication, easy to understand the operation

### Read Easily and Clearly on LED Hidden Screen with Backlight

A whole piece of surface with minimal design. Make it easy to read data information at any time

### Heat-proof & waterproof silicone pad

Keep it away from high temperature and water stains

### Matte texture anti-scratch

The surface comes with a delicate matte texture which ensures a comfortable hand feel while also keeps the scale without finger-prints or scratches



TIMEMORE®

GET TIMEMORE. MAKE GREAT COFFEE  
[www.timemore.com](http://www.timemore.com)



@TIMEMORECOFFEE

What else imagination do you have about electric pour over kettle?



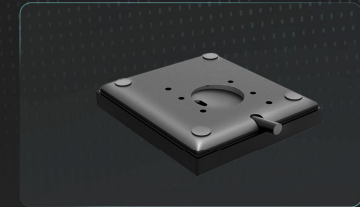
SMART



Heating Faster



Setting Temp. with sliding touch  
Dual digital screens for intuitive operations



Unique design of the wire connection  
under the panel for aesthetics



British STRIX Temp. Controller to  
control temperature accurately



Thin/thick spouts for different options  
You can choose one or both.



TIME MORE®

GET TIME MORE. MAKE GREAT COFFEE  
[www.time more.com](http://www.time more.com)

Instagram icon, Facebook icon, YouTube icon  
@TIMEMORECOFFEE

# GRINDER<sub>go</sub>

PORTABLE ELECTRIC BEAN GRINDER



## GRINDER<sub>go</sub>

PORTABLE ELECTRIC BEAN GRINDER  
+ CARRY BAG



PROFESSIONAL GRINDING QUALITY  
& EFFICIENT EFFICIENCY



### Innovative large opening

Convenient to put beans inside  
Simple to operate instead of disassemble motor parts



### The Container is also a bean canister with the lid

Food grade glass  
Easy to check ground coffee  
Used as sealed can with lid covered



### Pont to Point coarseness adjuster

Damping structure to adjust the coarseness precisely and clearly

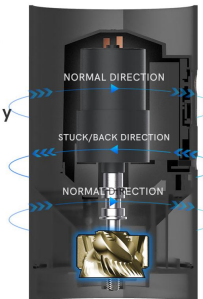


### Sharp high precision CNC steel burrs

Patented E&B burrs with Titanium coating  
Durable and energy-saving

### Professional high uniformity

Summarized many years' of designing of grinders  
TIMEMORE quality and standard  
Meet the demand for uniform extraction



### Auto-Spinning Technology

It can automatically rotate back when it gets stuck  
It will get powered off automatically for 3 times of auto-spinning to protect the motor

### Strong motor system

High speed and high consistency for 30s per 20g  
Auto-stop in 10 seconds without beans  
2x800mAh Power lithium batteries with strong battery life  
Grind Max 400g for full charge of battery)



GET TIMEMORE. MAKE GREAT COFFEE  
[www.timemore.com](http://www.timemore.com)



# 123 go

3-IN-1 PORTABLE COFFEE BREWER



# 123 go

## 3-IN-1 PORTABLE COFFEE BREWER

Combined a grinder, a dripper and a server  
Small and simple design with profession extraction  
3 min for a cup of pour-over

CARRY BAG



### GRINDING SYSTEM

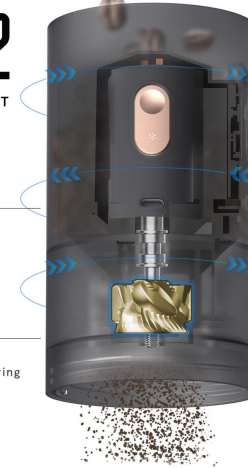
**2**  
PART  
GRINDING PART

### Convenient Large opening

Motor structure installed in the middle with more room for you to pour beans  
Easy for you to pour beans

### Consistent Grinding

TIMEMORE Standard and experience  
Dual bearings and high accuracy manufacturing



### Strong motor system

High speed and high consistency for 30s per 20g  
Auto-stop in 10 seconds without beans  
2x800mAh Power lithium batteries with strong battery life  
Grind Max 400g for full charge of battery

### Auto-Spinning Technology

It can automatically rotate back when it gets stuck  
It will get powered off automatically for 3 times of auto-spinning to protect the motor

### Sharp high precision CNC steel burrs

Patent E&B burrs can cut beans fast and consistently

### EXTRACTION SYSTEM

**3**  
PART +

AUTO-DRIPPER/FILTER MESH/SERVER

### 2 min for uniform extraction

Beginners can make Golden-cup  
Dripper with 13 holes for uniform pouring in 2 min

### 300 mesh Nylon filter

Effectively filter coffee grounds  
No need extra paper filters  
Reusable and Environment- friendly

### High borosilicate heat-resistant glass

Strict quality control, temperature difference of 150°C



### Brew in 3 min

#### STEP 1

Set coarseness and grind beans

#### STEP 2

Pour water (88-92°C)  
Pouring starts



#### STEP 3

Wait for 2 min.  
(you can cover the lid to bloom)

Then enjoy a cup of good coffee please.



GET TIMEMORE. MAKE GREAT COFFEE  
[www.timemore.com](http://www.timemore.com)



INNOVATIVE DESIGN WITH AWARD



reddot award 2017  
winner



## Manual Coffee Grinder

### Unibody-design of Aluminum Alloy and Walnut

With dozens of processing steps, Aluminum body and Walnut wooden container are cut by CNC. Walnut textures are clear and natural with several polishes, which look as elegant as a piece of handcraft.



### Won Reddot Award

Statement by the jury: Expressing high quality standards, this coffee grinder presents an aesthetic and characteristic overall appearance.

### Creative Hand Grip

Unique design round inside and square outside instead of traditional cylindrical shape, which is elegant and also non-slip.

### High hardness steel burrs

It's highness up to HRC58 which is sharp and can cut beans fast and evenly.

### Dual Bearings to Fix the Shaft

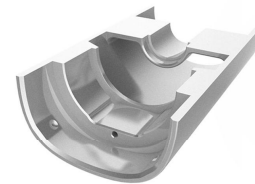
Two ball bearings to make sure burrs rotate consistently and smoothly.

### Point to Point Coarseness Adjustment

Patented steel ball damping structures can make the adjustment precisely measurable.

### High-precision Machining

Integrated Aluminum Alloy cut by CNC achieves tolerances within 0.03mm.



GET TIMEMORE. MAKE GREAT COFFEE  
[www.timemore.com](http://www.timemore.com) @TIMEMORECOFFEE

# CHESTNUT X lite

HIGH PERFORMANCE WITH AESTHETICS



## CHESTNUT X lite

HIGH PERFORMANCE WITH AESTHETICS

### GRINDING SYSTEM

PART  
1  
GRINDING PART

#### Higher Uniformity

Grinding includes two main factors: cutting & squeezing. We increase cutting and reduce squeezing to reduce fines and achieve a highly concentrated particle size distribution.

#### Select SUS440 Stainless Steel

Special stainless steel with hardness up to 58.5-60.5 HRC, wear-resistant and durable.



#### S2C880 Patented Burrs

Patented philosophy of S2C (spike to cut) to achieve secondary cutting grinding.

#### Precise Double-bearing Structure

Excellent coaxiality for smooth grinding

#### High-precision Full Metal Processing

Integrated Aluminum Alloy by CNC with tolerances of 0.03mm

### FEATURES

PART  
2  
PRODUCT DETAILS

#### Solid Feel and Stable Grip

It's made of all-metal material with matt surface in an exquisite style and easy to hold the main body with dia. of 53mm.

#### Smooth Effortless Grinding

Grind easily for even users with low physical strength.

#### Set your Desirable Coarseness

Point to Point adjustment with accuracy of 0.5 click  
Meet more requirements from coffee lovers.

#### New Handle Design

Highlight a minimalist aesthetic

#### The Metal Inlay Logo

Highlight the elegant texture

#### Non-slip Silicone at the Bottom

Thoughtful design to protect the table surface

#### Flavor Performance

Extract coffee with a complete flavor performance, balanced and full, with better cleanliness



GET TIME MORE. MAKE GREAT COFFEE  
[www.time more.com](http://www.time more.com)





## PROFESSIONAL PORTABLE MANUAL GRINDER

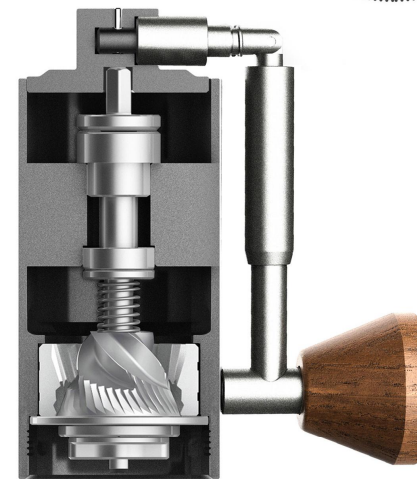


## NANO Coffee Grinder



### Patented foldable handle with Self-lock

Patented foldable handle can lock automatically which is more convenient for users to put it away or carry.



Profile of NANO structure

### Just right Capacity

Grind 15g coffee beans at a time which meets the need of one cup

### Minimal Size

Its height is only 10cm! It's a highly compressed design without unnecessary room to make it lighter and more portable. Let's enjoy coffee at any time.

### Dual Bearings to Fix Central Shaft + High Quality Burrs

It's minimal size but we never compromise its grinding quality. Two ball bearings fix central shaft to keep stable concentricity which is a key to consistent grinding. Stainless steel burrs in CNC can cut coffee beans with high efficiency.



GET TIMEMORE. MAKE GREAT COFFEE  
[www.timemore.com](http://www.timemore.com)



EFFORTLESS AND MINILIST DESIGN



● Chestnut **Slim3**



● Chestnut **Slim Plus**



## Slim Manual Coffee Grinder

### Burr Details



E&B  
Slim Plus



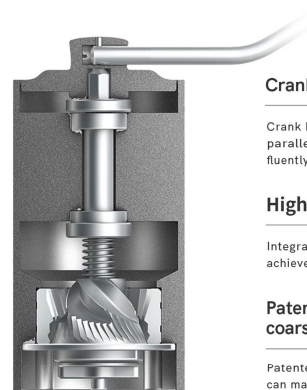
S2C 660  
Slim 3

### Easy to hold the main Body

With dia. of 45mm, its main body is non-slip and comfortable for you to hold and grind.

### Dual Bearings to fix the shaft

Dual bearings to fix the shaft. Grind coffee beans consistently and smoothly.



### Crank Handle Design

Crank Handle design makes both hands parallel to each other to grind more fluently.

### High-precision machining

Integrated Aluminum Alloy cut by CNC achieves tolerances within 0.03mm.

### Patented Point to Point coarseness adjustment

Patented steel ball damping structures can make the adjustment precisely measurable.  
Patent No.: ZL201620488714.6



TIMEMORE®

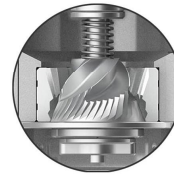
GET TIMEMORE. MAKE GREAT COFFEE  
[www.timemore.com](http://www.timemore.com)



@TIMEMORECOFFEE

A MILLSTONE OF MANUAL COFFEE GRINDER

## CHESTNUT C Series Manual Coffee Grinder



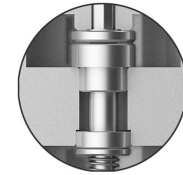
### High Sharpness Burrs

Its hardness is up to HRC58 and can cut beans fast and consistently



### Point to Point adjustment

Adjust coarseness precisely with steel ball damping structures



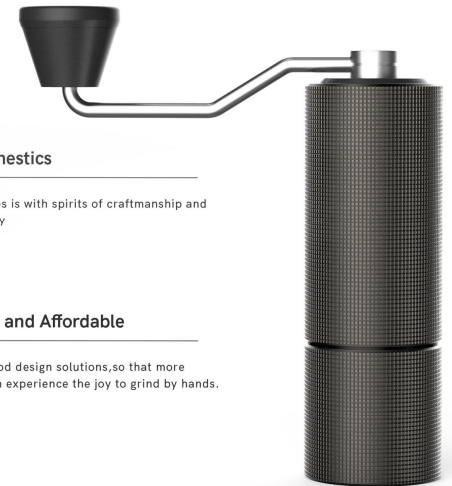
### Dual bearings to fix the shaft

It can make burrs rotate more stable and more consistently



### More Colors for your options

Black | Gray | white



### Classic Aesthetics

Chestnut C series is with spirits of craftsmanship and natural simplicity

### Economical and Affordable

Costdown by good design solutions, so that more coffee lovers can experience the joy to grind by hands.



Standard Burrs      S2C 660

<b>Model</b>	C2	C3
<b>Diameter</b>	Φ38mm	Φ38mm
<b>Material</b>	SUS420	SUS420
<b>Uniformity</b>	★★★☆☆	★★★★☆



GET TIMEMORE. MAKE GREAT COFFEE  
[www.timemore.com](http://www.timemore.com)



@TIMEMORECOFFEE



SECRET OF 90° WATER FLOW



### TIMEMORE Fish 03 Pour-over Kettle



#### Made for one cup

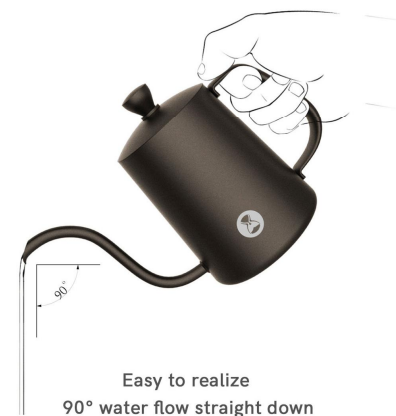
Capacity 300ml.  
Dia of spout 4mm.  
Super slim water flow  
Tiny and convenient to carry

#### Made for users at home

Capacity 600ml  
Dia. of spout:6mm  
Used for 2-3 cups  
Easy to control water

#### Made for commerce or profession

Capacity 900ml  
Dia. spout:6mm  
Adjustable Water flow  
Comfortable hand grip



#### Easy to realize

90° water flow straight down



#### Patent design of spout

Patent certificate NO:201620199042.7



Body :304 Stainless steel  
Coated with three layers of  
Teflon coating in 1300°C  
Wear-resisting and Durable  
Healthy, Tidy and Clean



Steady water flow structure  
Special design makes water  
flow fluently with no effect  
from the water pressure.



GET TIMEMORE. MAKE GREAT COFFEE  
[www.timemore.com](http://www.timemore.com)



## STYLISH AND QUALITY POUR-OVER KETTLE



### FISH PURE KETTLE



#### Steady Water Flow Structure

Special design makes water flow fluently with no effect from the water pressure.  
PATENT NO. : 201630023927.7



#### High Temperature Ceramic Paint

Excellent Texture with Strong Metallic Luster Inside  
Durable with High Hardness  
304 Stainless steel BODY with fine polish

#### Patented Spout Design

The secret of easy control of water is that each kettle is processed with high accuracy in a special way.  
PATENT NO. : 201620199042.7



#### Ergonomics Handle

Ergonomics Design with Comfortable hand grip  
Safer Enlarged distance between handle and BODY



#### 90°Vertical Flow

Easy to control water flow even if for beginners  
Verticalflow helps keep grounds stable and even to make sure consistent extraction

### FISH YOUTH KETTLE



#### Anti-scalding handle with comfortable hand grip

The handle precisely conforms to the curve of the finger Black is made of walnut, and other colors are made of white oak wood.

#### More Colors for your Options

Sand black / Matt white / cherry pink / ice blue



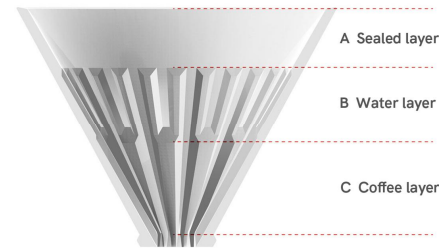
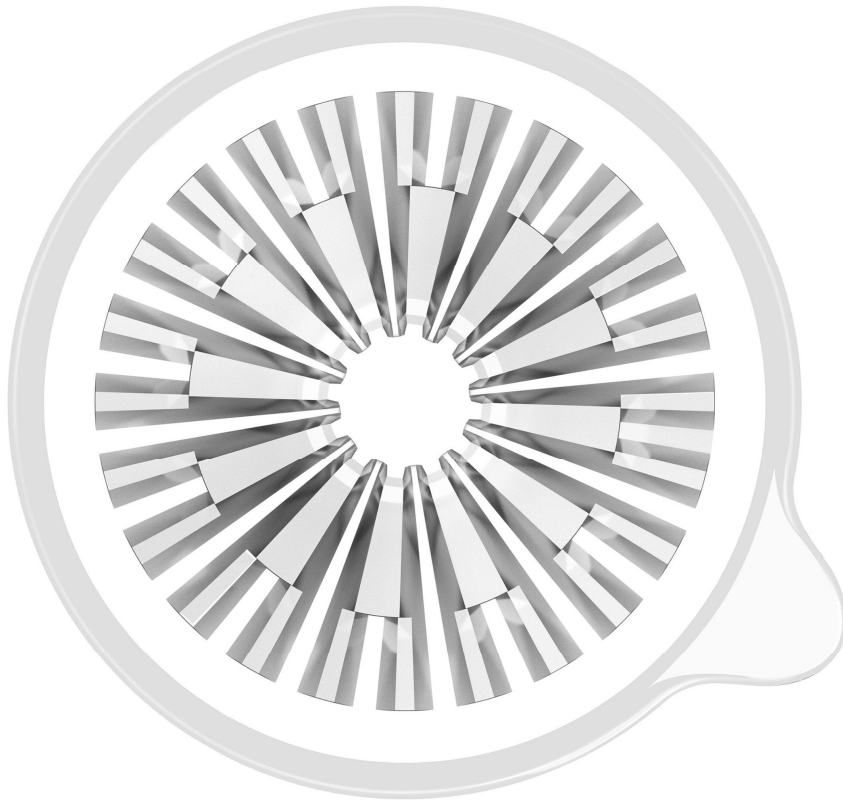
TIME MORE®

GET TIME MORE. MAKE GREAT COFFEE  
[www.time more.com](http://www.time more.com)



@TIMEMORECOFFEE

NEW STANDARD OF EXTRACTION WITH PROFESSIONAL SPIRITS



**A Sealed layer**

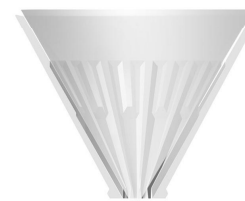
Filter paper and dripper fit fully. There is no groove between them. Water can't

**B Water layer**

We suggest you pour over within this layer. The area of the concaves is gradually reduced to control the flow rate.

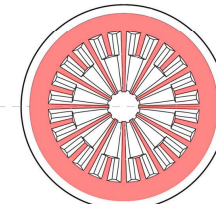
**C Coffee layer**

15 / 20g ground coffee will just take over this layer. There are not many ribs in this layer but more grooves. It's similar to the flannel-like extraction.



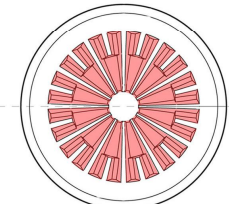
**Extraction in Three layers**

Good fit shows clearly constructions in 3 layers. Even beginners can pour over easily by viewing the construction.



**Closer fit with paper filter**

Colored area means the area that filter paper fit the dripper. It ensures close fit of filter paper and the Dripper. Therefore, the shape of coffee ground after brewing is round and full. These will help with a even extraction.



**Smoother Permeability**

Colored area means the groove that water run through. Its area is more than other dripper's. It allows smoother Permeability. With a better permeability, you don't have to worry about the over-extraction of slow water-flow.



**PCTG Crystal Eye Dripper 3 sizes**

20-30g for Dripper 02  
15-20g for Dripper 01  
10-15g for Nano  
Choose according to your need



**Glass Crystal Eye Dripper and Optical Glass Dripper**

Heat-resist Borosilicate Glass  
Unibody Aluminum Alloy Holder  
Withstand the temperature difference of 130 C



JUST FOR THE BEAUTY OF COFFEE



### Original Design Small U French Press

As the simplest coffee maker, French Press is always considered as amateur. But if you use it properly, you can also get amazing flavors. So we design a French Press but more exquisite and more professional. It becomes a wonderful coffee maker with smooth press, the precision of filtration and visual fine texture. Besides, you can also use extra round paper filter for cleaner coffee.



Food Grade Silicone  
Safe and Healthy



Borosilicate Glass  
Heat-resistant



Stainless Steel mesh  
Clean and pure



V-shape Spout  
Smooth and leak-free



### Clear Scale of capacity

Pleasant design without worry about capacity.

### No Water Stain or Fingerprints

Matt surface to keep it clean and tidy

### TIMEMORE Aesthetics

Small U French Press is the Original Design of TIMEMORE with spirit of craftsmanship and original flavors of coffee



TIMEMORE®

GET TIMEMORE. MAKE GREAT COFFEE  
[www.timemore.com](http://www.timemore.com)

Instagram, Facebook, YouTube icons  
@TIMEMORECOFFEE



Exquisite Workmanship for Supreme Ice Drip Coffee



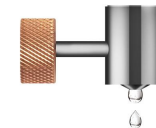
### Ice Drip Coffee Maker



400ml

#### Precise Valve

Metal Valve processed by CNC  
Adjustable speed from small to big



#### Healthy Material

Borosilicate Glass combined with PCTG  
High Transmittance and amazing texture  
Withstand High Temp. Change conform  
Healthy standard requirement.

#### 650mesh Filter (Extra fine)

650mesh Filter comes without grounds  
and brings you better flavors





TASTE THE COLOR AND FLAVORS OF SPECIALTY COFFEE

### Chumu Cup

Specialty Coffee not only brings us flavors but also enjoyment of coffee colors. We're trying to create glass cups made for specialty coffee with a traditional Japanese hammer-print style.



### Special spout like Pelican's mouth

Chumu cups are different from cups for tea or wine. It's made of high borosilicate heat-resistant glass and can withstand 130 °C of temperature difference.

The cup is vertical closing with a thickness of 3.5mm easy for you to hold and taste. The capacity is 90ml.

Coffee server is 350ml for 2-3 cups  
Server's handle is plastic walnut-like  
Include: Server×1, Cup×2



Pour wine-like color of coffee to Chumu cups.  
It produces wonderful light and shadow in the sun.



GET TIMEMORE. MAKE GREAT COFFEE  
[www.timemore.com](http://www.timemore.com)

Instagram icon, Facebook icon, YouTube icon  
@TIMEMORECOFFEE

MUSE POUR OVER STAND  
BASIC COFFEE SCALE WEIGHING PANEL



● Brass ● Aluminum Alloy ● Fine Copper



Handmade Walnut Base

Crafted walnut base through dozens of polish  
Show geometric beauty with tension  
Create irreplaceable warmth from home

MUSE  
POUR OVER STAND

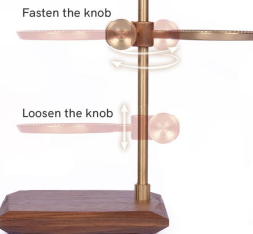
Play graceful harmony of Coffee like MUSE

Pour over has natural sense of ritual  
Pour over stand helps display it fully  
The stand holds Coffee dripper and the server to show drips clearly  
Muse is the goddess of music and is the origin of the word MUSIC.  
Coffee is similar to Music  
Enjoy warm and graceful pour over coffee with a sense of ceremony!



Exquisite and Precise  
brackets

Inspiration from vinyl turntable and brass trumpet  
Warm music flows from the Mellow texture  
The big knobs are like beautiful copper instruments  
The inside is a simple and ingenious set of patent structures  
When locked, it can rotate smoothly but can't move up and down  
It helps make you feel free to brew coffee



Portable but also Professional with graceful coffee rituals



### Unique and fashionable design

Not just a simple carrying bag  
But also serious attitude towards coffee.

### Light weight and convenient design

Ultra small size as Apple Notebook.  
Easy to carry

### Perfect coffee solution at travel

Get a perfect fresh pour over coffee  
anytime anywhere



## 1 Crystal Eye Dripper PC 00



Capacity: 10-15g  
Material: PP, PCTG  
Design to ensure a close fit with paper filter. Make coffee evenly for one person need.

## 2 Chestnut NANO Grinder



Capacity: 15g  
Material: Aluminum Alloy + Stainless Steel  
Stainless steel burr cut by CNC. Dual bearings to fix central shaft. Grind coffee bean consistently.

## 3 Fish 03 Kettle 300ml



Capacity: 300ml  
Material: 304 Stainless Steel + Patented paint  
Patented Goose neck spout make 90° vertical stream to help users make coffee evenly.

## 4 Bean Canisters



Capacity: 15g  
Material: Aluminum Alloy/PP  
Keep different coffee beans. Right capacity for one cup

## 5 Paper Filter 00



Capacity: 1cup  
Material: Wood pulp  
Without Odor or any adhesive



TIME MORE®

GET TIMEMORE. MAKE GREAT COFFEE  
[www.timemore.com](http://www.timemore.com)



@TIMEMORECOFFEE



Fascinating Equipment for Coffee Barista and Special drinks maker



**Chestnut G1 Grinder**



Reddot Design Award Winner  
Original designed grinder with good looking and high quality

**Fish Smart Pour Over Kettle**



Fast, Stable, Accurate Smart Pour Over Kettle  
No need to wait for too long to boil water

**Black Mirror Weight Scale**



Suitable for Espresso and Pour Over Coffee  
Good Looking, High-precision Induction,  
Cost-effective coffee weight scale

**Crystal Eye Dripper Coffee Server**



Diamond-like luster, Sturdy and Durable,  
Manual blowing glasses, V Shape Spout,  
Concentrated and Fluent Stream,

**Chuimu glass cups  
Coffee Paper Filter**



Show the color of coffee perfectly  
Protoplasm from Japan, Unique beading craft, no binder,



**Chestnut G1 Coffee Suitcase**

Fascinating Equipment for Coffee Barista and Special drinks maker



TIMEMORE®

GET TIMEMORE. MAKE GREAT COFFEE  
[www.timemore.com](http://www.timemore.com)




  
[@TIMEMORECOFFEE](https://www.instagram.com/TIMEMORECOFFEE)



**Chestnut C Series Pour over set**

Grinder + Glass Dripper + Fish 03 Kettle + Server  
C is a simple and elegant design for coffee lovers



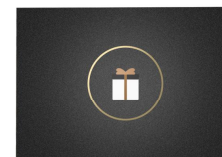
**Chestnut G Series Pour over set**

Grinder + Glass Dripper + Fish 03 Kettle + Server  
A full set for Pour Over Coffee



**Chestnut SLIM Series Pour over set**

Grinder + Crystal Eye Dripper + Fish 03 kettle + Server  
SLIM is an Economical Grinder which is a good choice for Pour over



**Other Products Customized Gift**

Kindly tell us your detailed requirements so we can customize one perfect option for you.