

# PRO 1

## USER ASSEMBLY GUIDE



## CONTACT YO-YO DESK

**Telephone:** +44 (0) 1793 575 082

**Email:** [info@yo-yodesk.com](mailto:info@yo-yodesk.com)

**Website:** [yo-yodesk.com](http://yo-yodesk.com)

**YO-YO DESK**<sup>®</sup>  
Keep Moving

# WHAT'S IN THE BOX

**A**  
X12



**B**  
X4



**C**  
4x4 5x5



**D**  
2.5x2.5



**E**  
X4



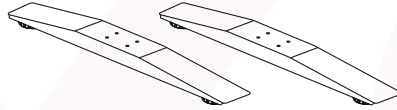
**F**  
X15



**G**  
X1



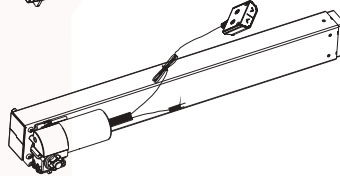
**1**  
X2



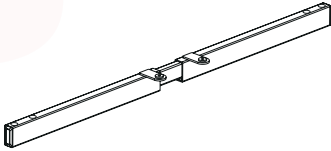
**2**  
X1



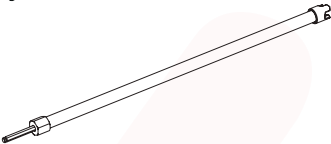
**3**  
X1



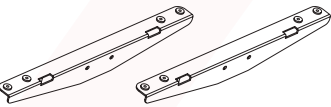
**4**  
X1



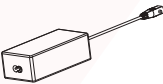
**5**  
X1



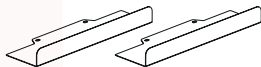
**6**  
X2



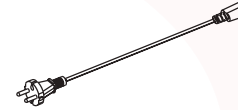
**7**  
X1



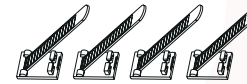
**8**  
X2



**9**  
X1



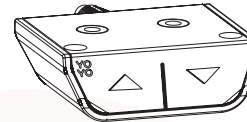
**10**  
X4



**11**  
X1

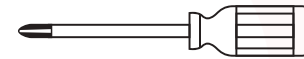


**12**  
X1



## ALSO REQUIRED

TO ATTACH THE TABLE TOP, CONTROL BOX AND CONTROL PANEL

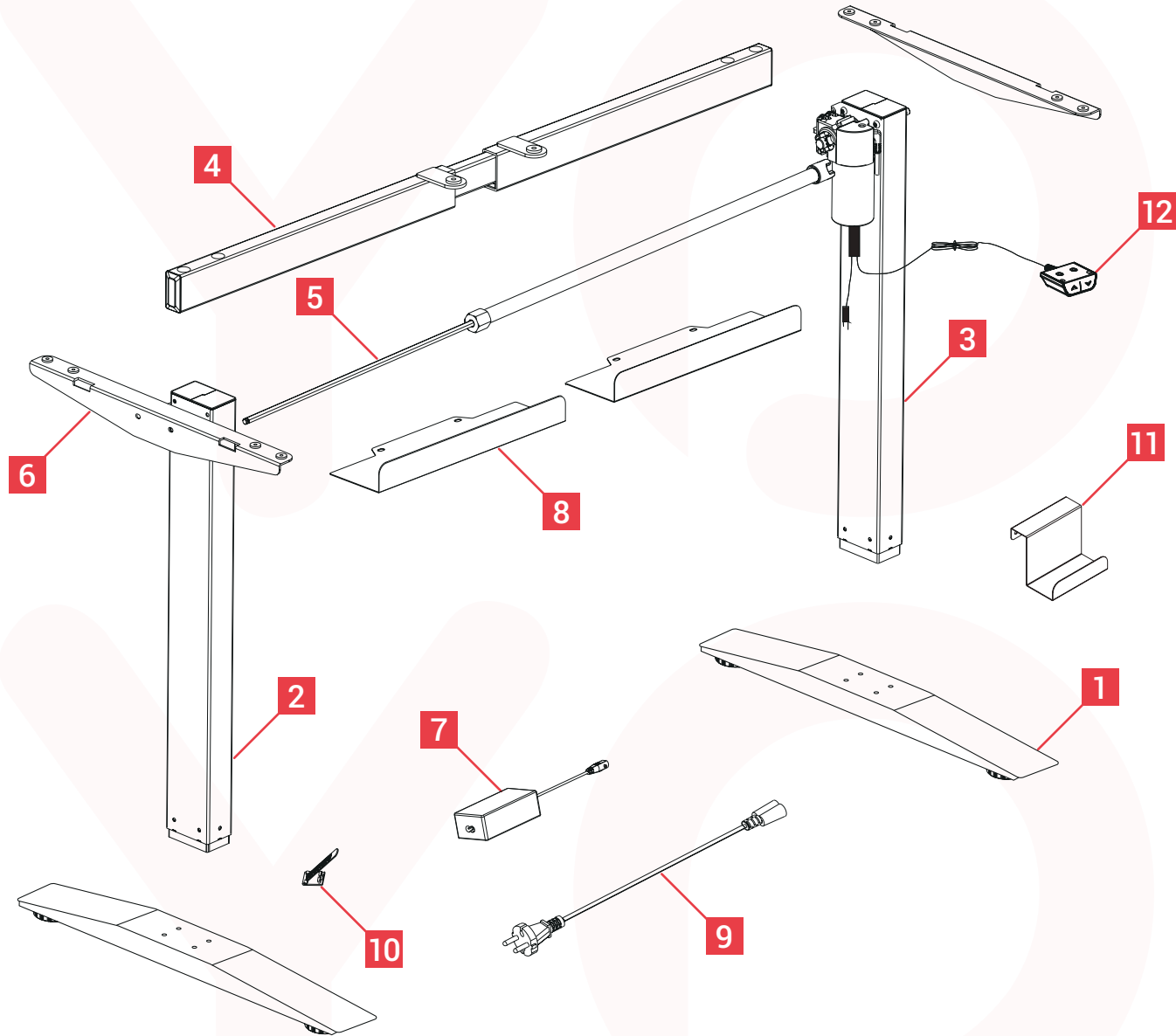


CROSSHEAD SCREWDRIVER  
(ESSENTIAL)

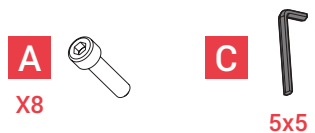


DRILL OR BRADAWL  
(RECOMMENDED)

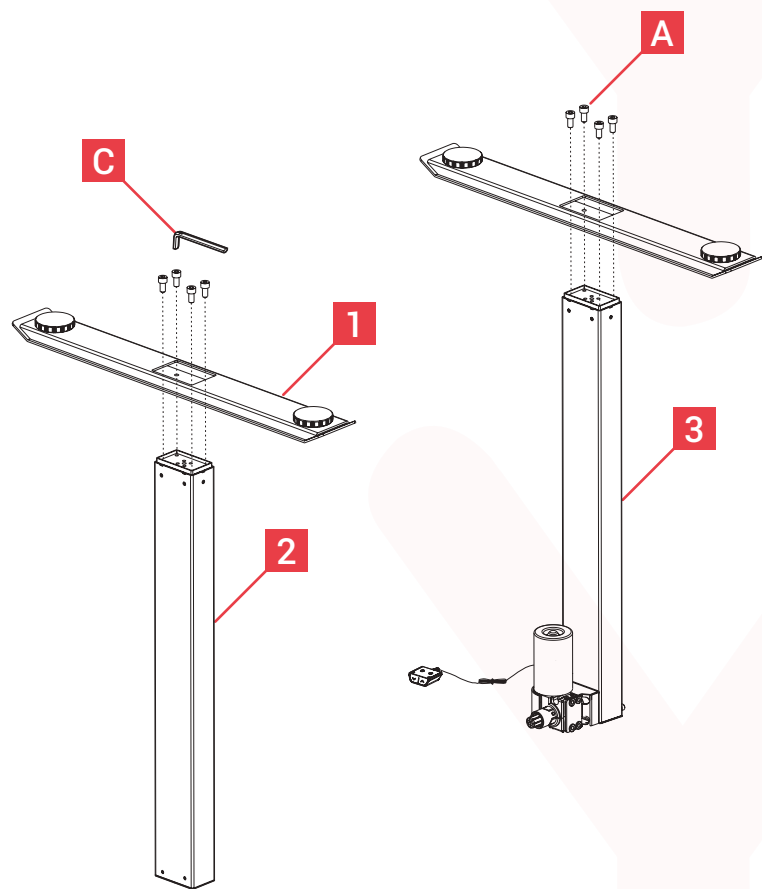
# ASSEMBLY OUTLINE



## STEP 1:



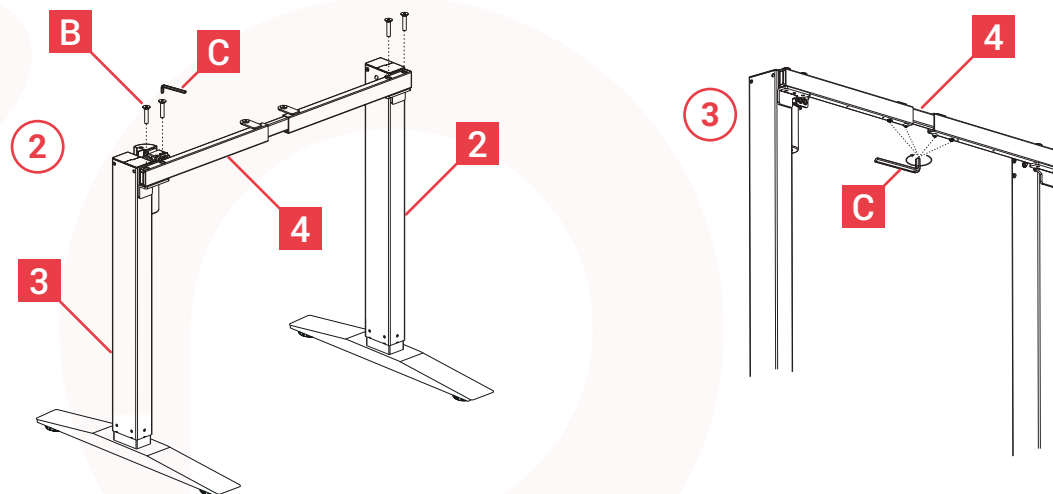
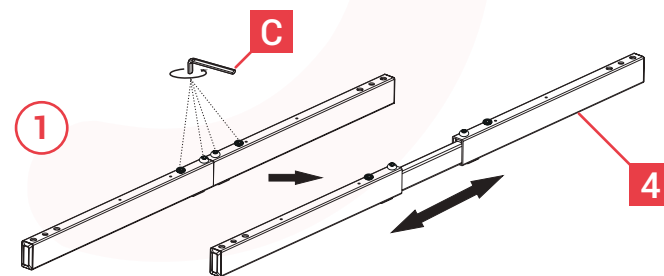
Attach the feet (1 x2) to the legs (2 and 3) with 8x A.



## STEP 2:



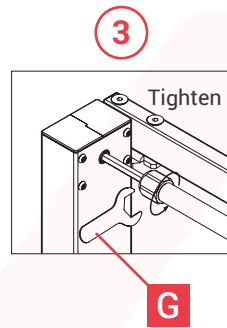
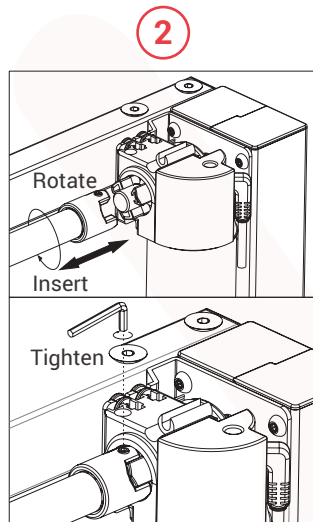
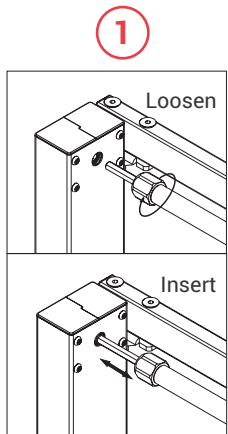
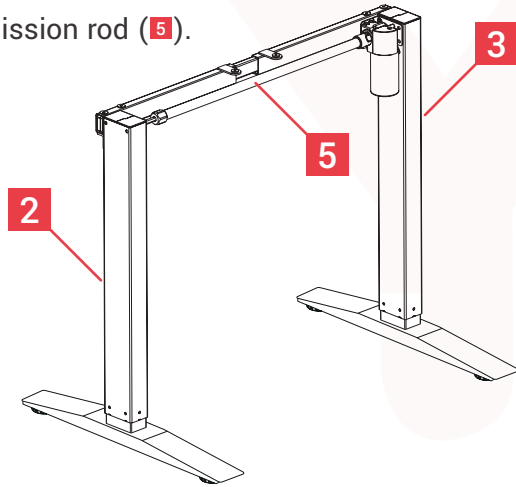
1. Loosen screws on 4 then extend the support beam to the size of your desk top.
2. Attach the supporting beam to legs (2 and 3) then tighten screws (B).
3. Tighten screws on the support beam.




## STEP 3:



Install the transmission rod (5).

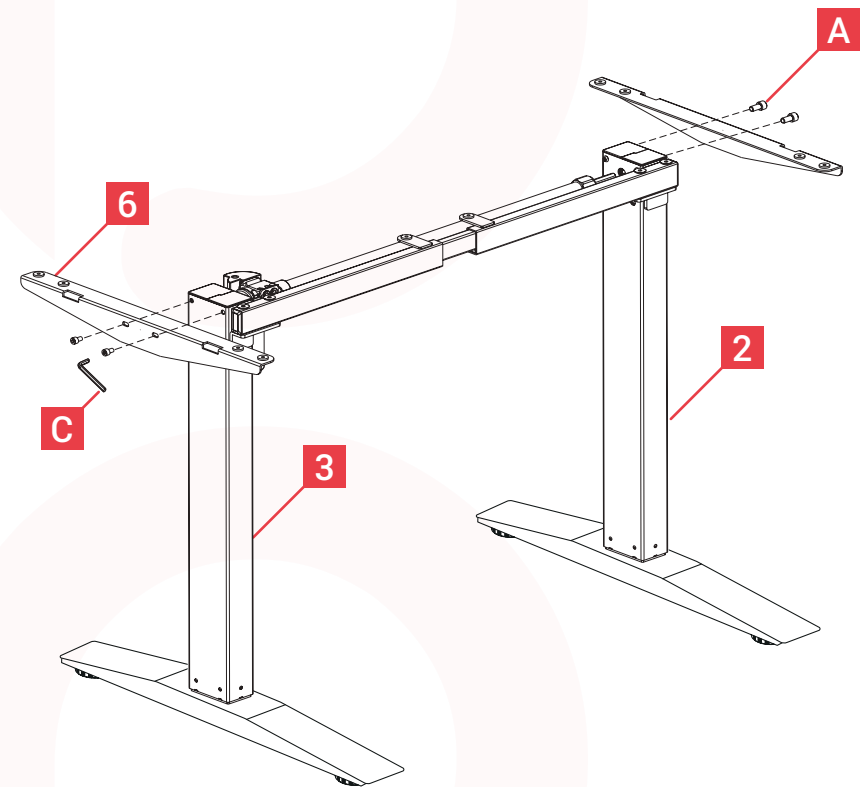


 Rotation must not exceed one third of a circle.

## STEP 4:



Attach supporting arms (6 x2) to legs (2 and 3) with 2x A.



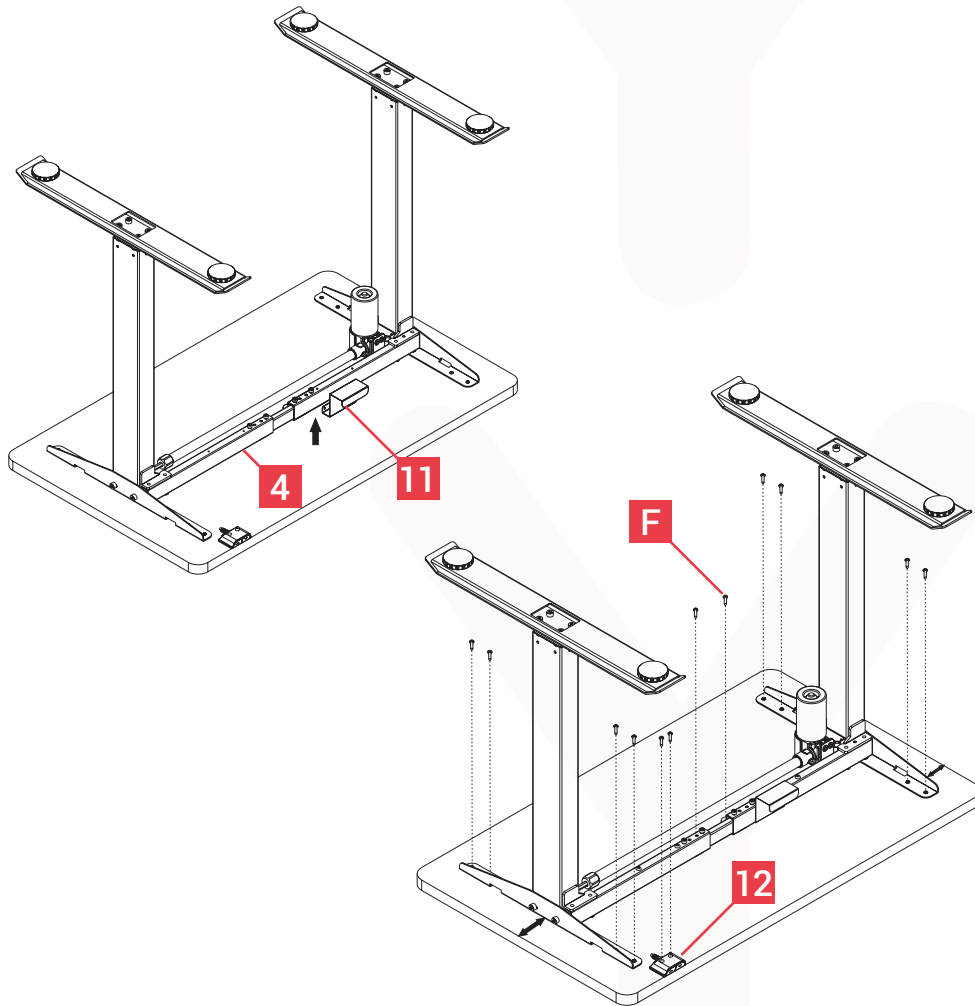
## STEP 5:

**F**



x12

Attach adapter holder (11) to the supporting beam (4).  
Screw frame and control switch (12) to the desk top.



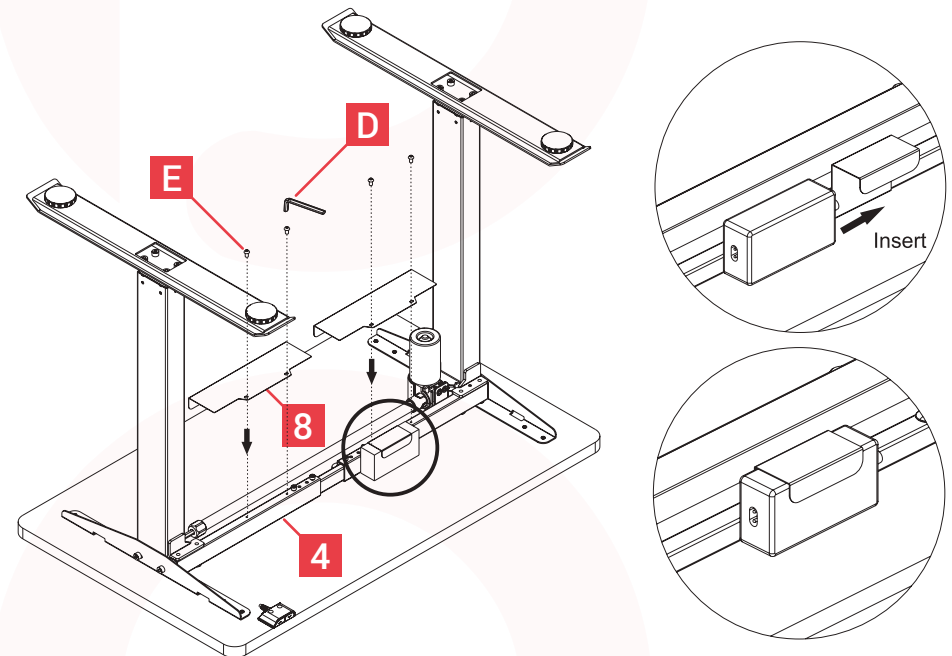
## STEP 6:

**E**



x4

Attach the baffles (8) to the supporting beam (4) using 4x E.  
Slide the power adapter (7) into its holder (11).



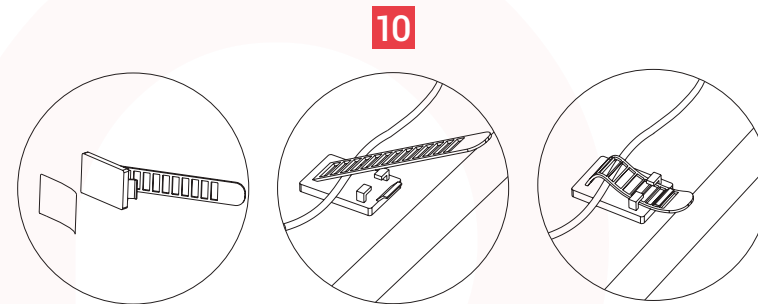
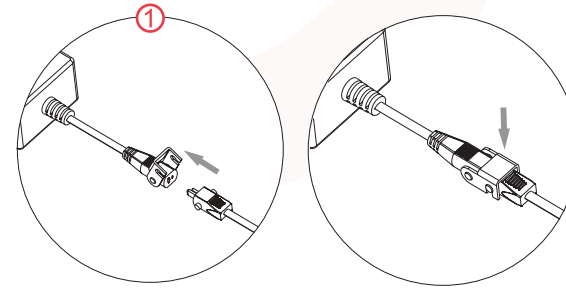
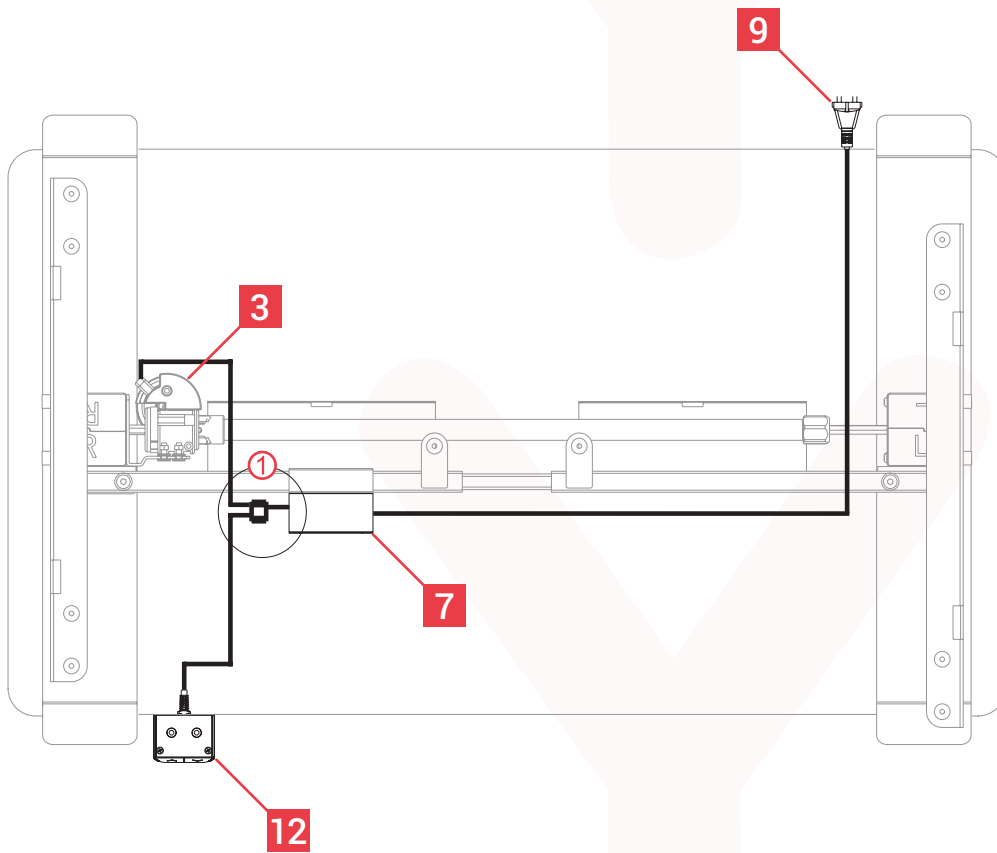
## STEP 7:

10

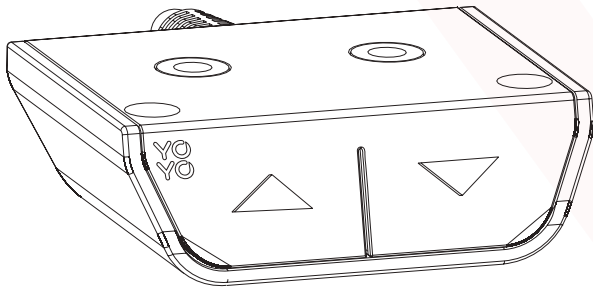
x4



Attach power cable (9) to the adapter (7).  
Attach the control switch (12) to the adapter (7) and the motor (3).  
Tidy cables using the cable ties (10).



# USING THE CONTROL SWITCH



▲	Adjust the desk upwards
▼	Adjust the desk downwards

## Instructions

Press the UP button or DOWN button to lift or lower the height of desk surface.

## Common fault treatment

The following tips will help you detected and eliminate the common fault and error. If the fault you met is not listed below, please contact with your supplier. Only the manufacturer and professionals are capable for investigating and correcting those fault and error.

Fault phenomenon	Method
No response while long pressing down arrow after connected with a power supply	1.Check if all the cables be connected well 2.Contact your supplier or dealer
The desktop could not be lifted	1.Check if overloaded, max loading: 70kg 2.Contact your supplier or dealer
Overwork (Duty cycle:Max 2min on/30min OFF)	1.Restart it after suspend for 30mins for the working time is too long 2.Contact your supplier or dealer



## Attention

1. Power supply: AC100V-240V,50/60HZ
2. Service Environment: 0-40°C
3. Unplug the power plug before cleaning, wipe the dust on surface with slight wet dishcloth when cleaning, be careful not to let the drops into the internal parts, not loose the connector.
4. The electric box contains electronic components, metals, plastics, wires etc., so dispose of it in accordance with each country's environmental legislation, not the general household waste.
5. Check carefully to ensure correct and complete assembly before using.
6. Be familiar with all functions and program settings of the product before first use.
7. Children are forbidden to play on the product because of unforeseen action when playing, so any dangerous consequences caused by this improper action will not be on.
8. Slight noise caused by the V-ribbed belt or brake system due to structure will not have any effect on the use of the equipment.
9. Corrosive or abrasive materials are forbidden to clean the equipment. Must ensure that the cleaner used will not pollute the environment.
10. Please make sure there is no hazard sources in your operating environment. e.g., do not litter the tools around. Always be careful to treat the packaging materials in order to avoid any possible danger, e.g. plastic bag may lead to choking hazard to children.
11. Keep the original package of the equipment if necessary in case of the future use in transportation.
12. The following tips will help you detected and eliminate the common fault and error. If the fault you met is not listed below, please contact with your supplier. Only the manufacturer and professionals are capable for investigating and correcting those fault and error.