

The background features a complex, repeating pattern of stylized floral motifs in shades of blue, white, and yellow, set against a dark blue background. The motifs include various flower shapes and leaves, some with intricate details like stamens and petals. The overall aesthetic is reminiscent of traditional Japanese floral art, such as chiyogami or washi paper designs. A large, white, rectangular frame is centered on the page, containing the main title and a subtitle.

# ABSTRACT MYSTERIES

Abstract art is not defined by lines, shapes or sizes!

## NOCTURNE BLACK PRINTED

3 piece co ord set

Abstract art allows one to see from the mind what one cannot see from the eyes...



MASTÈRE de Manià



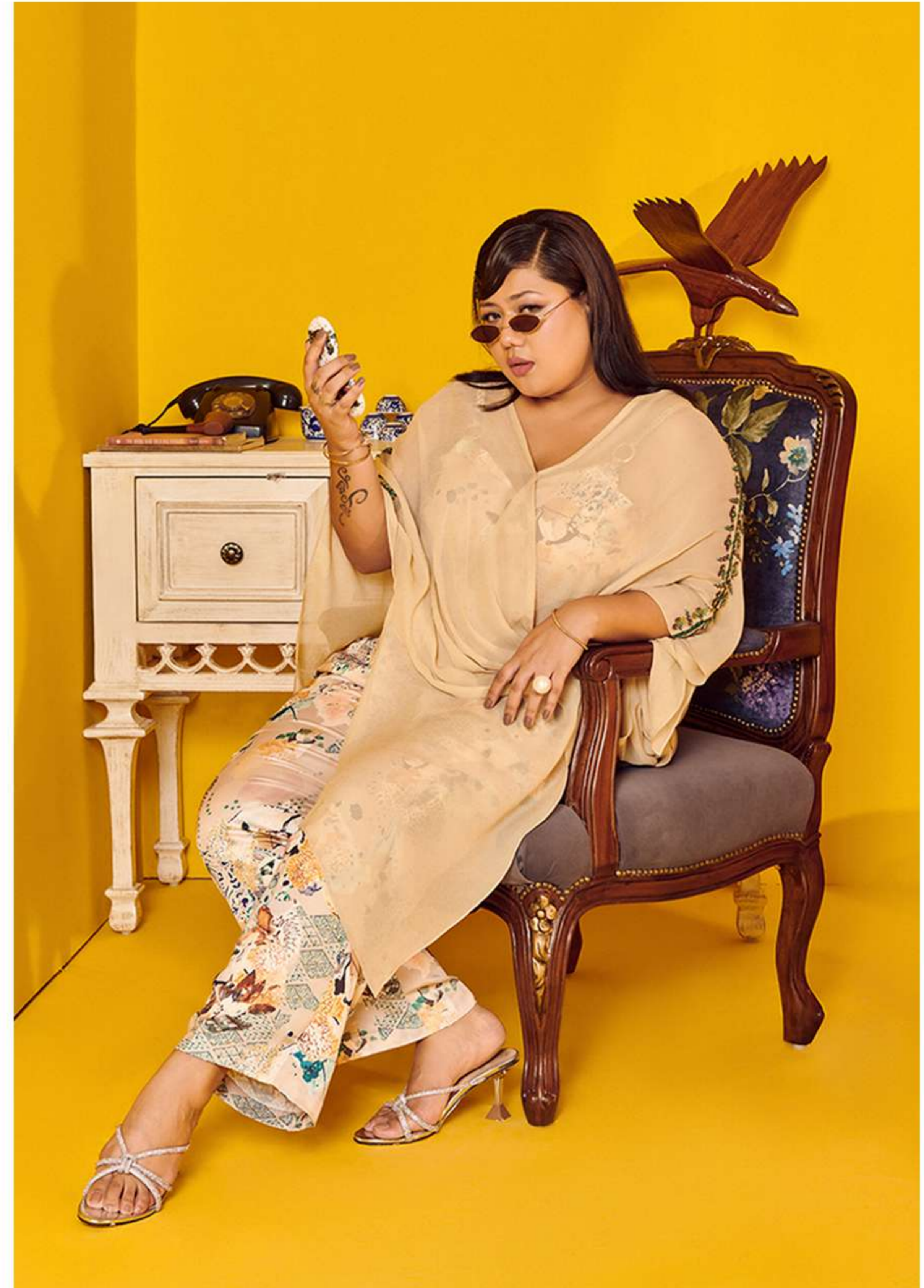


**FLAMING JUNE EMBROIDERED**  
Tunic Dress

**NIGHTHAWKS FULL SLEEVE**  
printed co ord set

The prints are inspired by the intricate strokes of abstract Art & hold a mystical essence to them!





**CLAUDE MONET CO ORD SET**  
with embroidered wrap



| Allure of Abstract for you to  
explore, imagine & discover...







**OPHELIA 3-4th SLEEVE**  
printed co ord set

Hidden Meanings & Untold Stories...



Traverse into the Enigmatic World  
of Abstract Art....



CARNIVAL EVENING PINK  
CAPE CO ORD SET



Discover the true sense of the collection (Indirect hint towards the true meaning of the collection that is a collection crafted for the Plus Size Bodies)

Embark on a journey of Exploration & Interpretation!





**BLACK FIRE ASYMETRICAL  
CO ORD SET**



**IRISES PINK HALTER  
NECK MAXI DRESS**



**ALICE PRINTED  
GEORGETTE  
3 PIECE CO ORD SET**









**THE NIGHT WATCH BLACK  
DRESS WITH SLIT AND BELT**

**BLACK SQUARE TOP AND  
PANT CO ORD SET**





**THE STARRY NIGHT  
BLACK GOWN**





**WHEATFIELDS BOAT NECK  
EMBROIDERED GOWN**



JUDITH BLACK  
MIDI LENGTH DRESS

