

6mm (1/4") Grade 10 two Leg Chain Sling, Master Link one end , clevis sling hook the other

WLL 2.0 t (WLL 3800lbs)

Description	QTY
Master link	1
Connector	2
Grab hook	2
Grade 10 chain to suit bearing length	2
Clevis sling hook	2

8mm (5/16") Grade 10 two Leg Chain Sling, Master Link one end , clevis sling hook the other

WLL 3.5 t (WLL 8100lbs)

Description	QTY
Master link	1
Connector	1
Grab hook	1
Grade 10 chain to suit bearing length	1
Clevis sling hook	1

10mm (3/8") Grade 10 two Leg Chain Sling, Master Link one end , clevis sling hook the other

WLL 5.6 t (WLL 12400 lbs)

Description	QTY
Master link	1
Connector	2
Grab hook	2
Grade 10 chain to suit bearing length	2
Clevis sling hook	2

13mm (1/2") Grade 10 two Leg Chain Sling, Master Link one end , clevis sling hook the other

WLL 9.5 t (WLL 21200lbs)

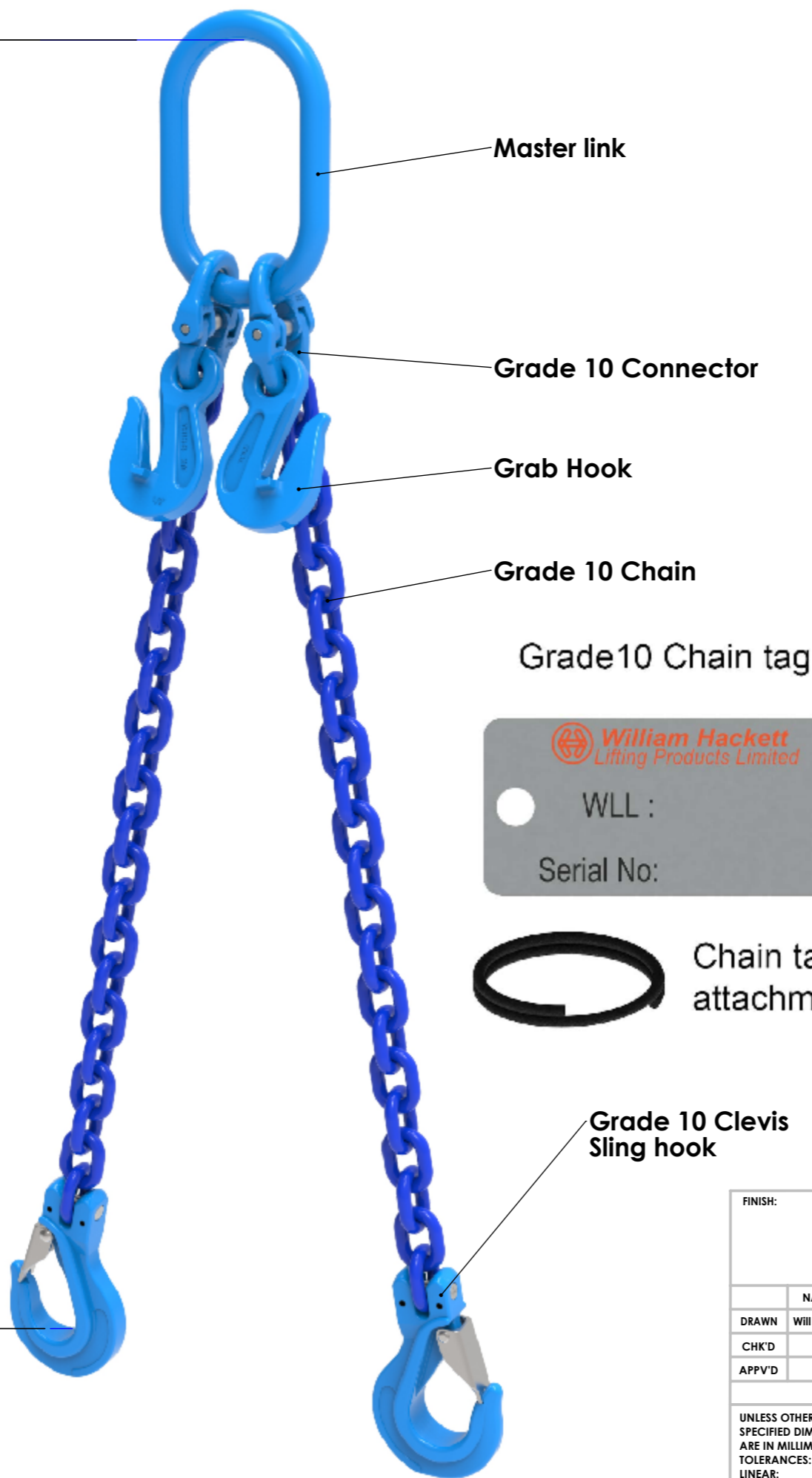
Description	QTY
Master link	1
Connector	2
Grab hook	2
Grade 10 chain to suit bearing length	2
Clevis sling hook	2

16mm (5/8") Grade 10 two Leg Chain Sling, Master Link one end , clevis sling hook the other

WLL 14 t (WLL 32000lbs)

Description	QTY
Master link	1
Connector	2
Grab hook	2
Grade 10 chain to suit bearing length	2
Clevis sling hook	2

Bearing Length from 1 mtr (3ft) to 9 mtr (30ft)



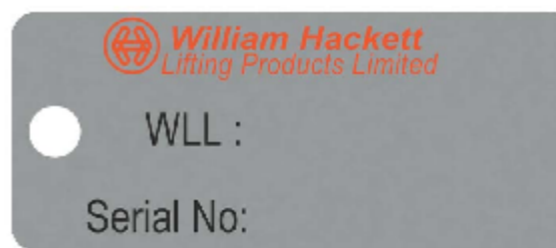
Master link

Grade 10 Connector

Grab Hook

Grade 10 Chain

Grade 10 Chain tag



Grade 10 Clevis Sling hook

Grade 10 Alloy Chain Slings comply with the following standards:

ASME B30-09-18 -G10 Sling
ASTM A973/A973M - G10 Sling

Components - BS EN 1677-1
ASTM A952-A952M , ASME B30.26

Chain & Components- Proof tested to 2.5 times WLL - This exceeds the ASTM requirements. Assembled sling proof tested to 2 times the WLL.

Chain - Tensile strength following heat treatment meets or exceeds all existing ASTM and OSHA specification requirements.

These products are suitable for lifting operations from -40°C to 200°C. Consult our technical department for operations outside of this range.

Batch marks on all components for traceability.

Declaration of conformity accompanies each sling.

FINISH:		DO NOT SCALE DRAWING		REVISION
DRAWN: Will Frater		SIGNATURE		DATE
CHK'D:		SIGNATURE		DATE
APPV'D:		SIGNATURE		DATE
UNLESS OTHERWISE SPECIFIED DIMENSIONS ARE IN MILLIMETERS TOLERANCES: LINEAR: ANGULAR:		MATERIAL:		TITLE: Grade 10 Double Leg Chain Sling
WEIGHT:		SCALE: 1:1		A3 SHEET 1 OF 1

Think before you print.

William Hackett
Lifting Products Limited

6mm (1/4") Grade 10 two Leg Chain Sling, Master Link one end, Self locking hook the other

WLL 2.0 t (WLL 3800lbs)

Description	QTY
Master link	1
Connector	2
Grab hook	2
Grade 10 chain to suit bearing length	2
Clevis self locking hook	2

8mm (5/16") Grade 10 two Leg Chain Sling, Master Link one end, Self locking hook the other

WLL 3.5 t (WLL 8100lbs)

Description	QTY
Master link	1
Connector	2
Grab hook	2
Grade 10 chain to suit bearing length	2
Clevis self locking hook	2

10mm (3/8") Grade 10 two Leg Chain Sling, Master Link one end, Self locking hook the other

WLL 5.6 t (WLL 12400 lbs)

Description	QTY
Master link	1
Connector	2
Grab hook	2
Grade 10 chain to suit bearing length	2
Clevis self locking hook	2

13mm (1/2") Grade 10 two Leg Chain Sling, Master Link one end, Self locking hook the other

WLL 9.5 t (WLL 21200lbs)

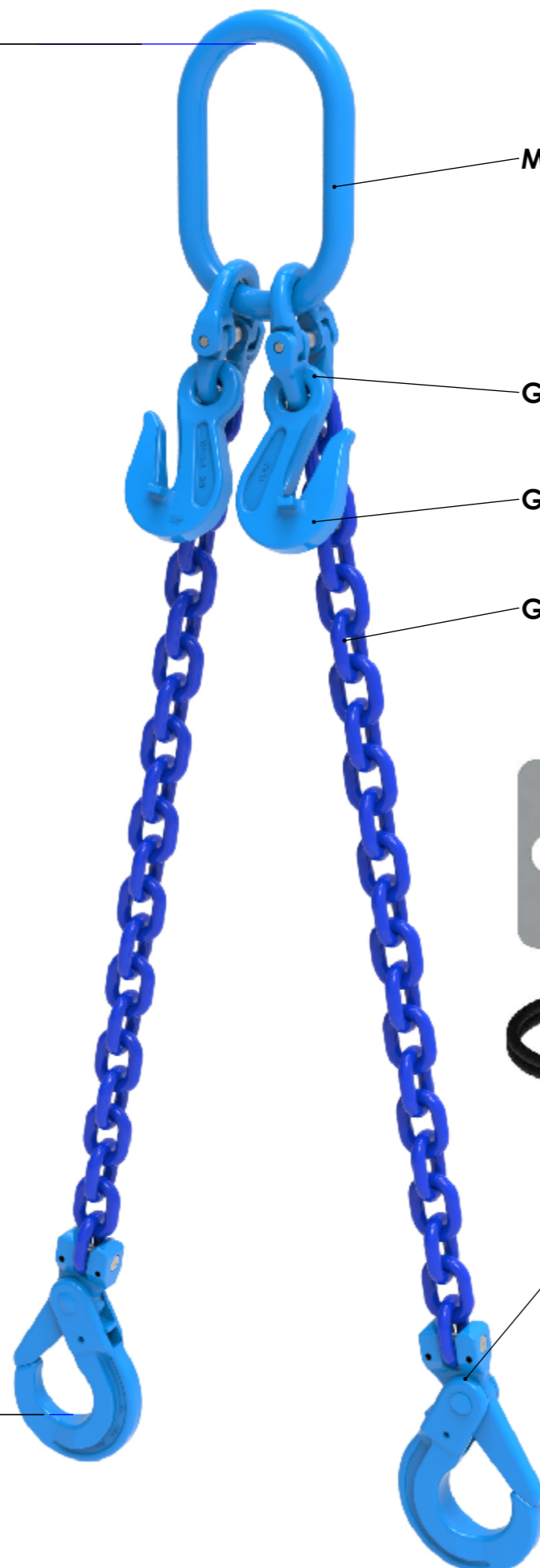
Description	QTY
Master link	1
Connector	2
Grab hook	2
Grade 10 chain to suit bearing length	2
Clevis self locking hook	2

16mm (5/8") Grade 10 two Leg Chain Sling, Master Link one end, Self locking hook the other

WLL 14 t (WLL 32000lbs)

Description	QTY
Master link	1
Connector	2
Grab hook	2
Grade 10 chain to suit bearing length	2
Clevis self locking hook	2

Bearing Length from 1 mtr (3ft) to 9 mtr (30ft)



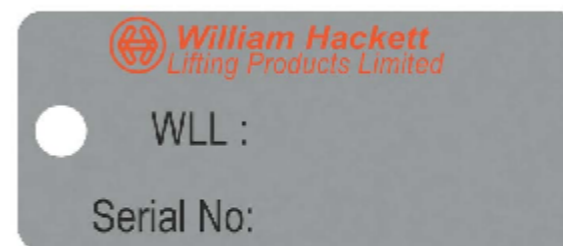
Master link

Grade 10 Connector

Grab Hook

Grade 10 Chain

Grade 10 Chain tag



Chain tag attachment loop

Grade 10 Clevis Self locker

Grade 10 Alloy Chain Slings comply with the following standards:

ASME B30-09-18 -G10 Sling
ASTM A973/A973M - G10 Sling

Components - BS EN 1677-1
ASTM A952-A952M, ASME B30.26

Chain & Components- Proof tested to 2.5 times WLL - This exceeds the ASTM requirements. Assembled sling proof tested to 2 times the WLL.

Chain - Tensile strength following heat treatment meets or exceeds all existing ASTM and OSHA specification requirements.

These products are suitable for lifting operations from -40°C to 200°C. Consult our technical department for operations outside of this range.

Batch marks on all components for traceability.

Declaration of conformity accompanies each sling.

FINISH:		DO NOT SCALE DRAWING		REVISION
	NAME	SIGNATURE	DATE	
DRAWN	Will Frater			
CHK'D				
APPV'D				
UNLESS OTHERWISE SPECIFIED DIMENSIONS ARE IN MILLIMETERS		MATERIAL:		TITLE: Grade 10 Double Leg Chain Sling
TOLERANCES:				A3
LINEAR:				
ANGULAR:		WEIGHT:		SCALE:1:1
				SHEET 1 OF 1