

6mm (1/4") Grade 10 Single Leg Chain Sling, Master Link one end, sling hook the other

WLL 1.4 t (WLL 2700lbs)	
Description	QTY
Master link	1
Connector	1
Grade 10 chain to suit bearing length	1
Clevis sling hook	1

8mm (5/16") Grade 10 Single Leg Chain Sling, Master Link one end, sling hook the other

WLL 2.5 t (WLL 5700lbs)	
Description	QTY
Master link	1
Connector	1
Grade 10 chain to suit bearing length	1
Clevis sling hook	1

10mm (3/8") Grade 10 Single Leg Chain Sling, Master Link one end, sling hook the other

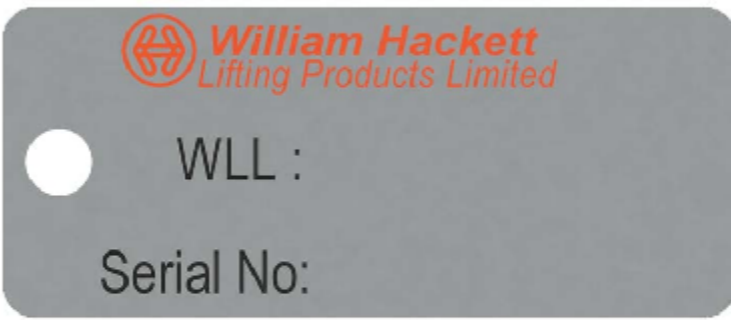
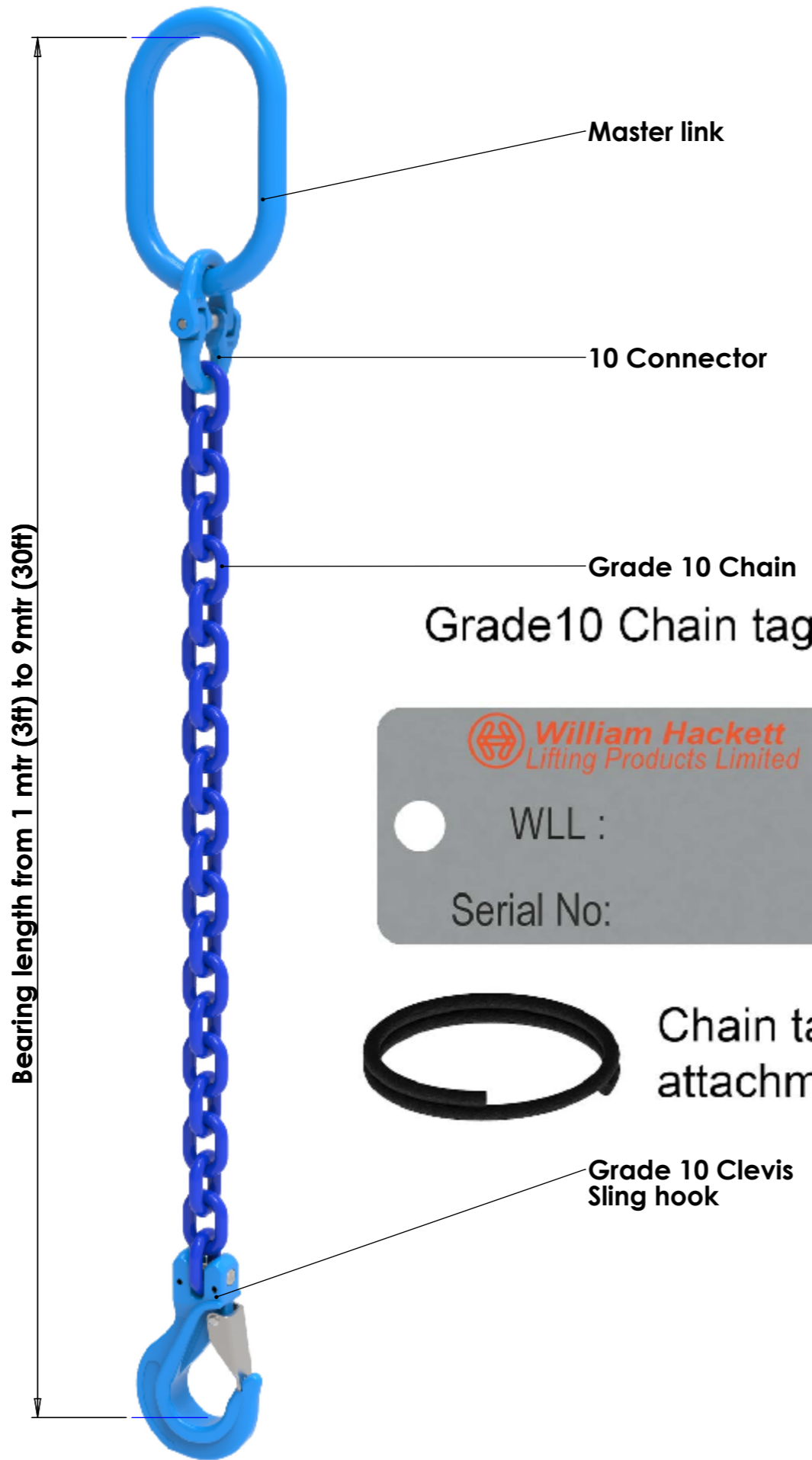
WLL 4 t (WLL 8800 lbs)	
Description	QTY
Master link	1
Connector	1
Grade 10 chain to suit bearing length	1
Clevis sling hook	1

13mm (1/2") Grade 10 Single Leg Chain Sling, Master Link one end, sling hook the other

WLL 6.7 t (WLL 15000lbs)	
Description	QTY
Master link	1
Connector	1
Grade 10 chain to suit bearing length	1
Clevis sling hook	1

16mm (5/8") Grade 10 Single Leg Chain Sling, Master Link one end, sling hook the other

WLL 10 t (WLL 22600lbs)	
Description	QTY
Master link	1
Connector	1
Grade 10 chain to suit bearing length	1
Clevis sling hook	1



Grade 10 Alloy Chain Slings comply with the following standards:

ASME B30-09-18 -G10 Sling
ASTM A973/A973M - G10 Sling

Components - BS EN 1677-1
ASTM A952-A952M , ASME B30.26

Chain & Components- Proof tested to 2.5 times WLL - This exceeds the ASTM requirements. Assembled sling proof tested to 2 times the WLL.

Chain - Tensile strength following heat treatment meets or exceeds all existing ASTM and OSHA specification requirements.

These products are suitable for lifting operations from -40°C to 200°C. Consult our technical department for operations outside of this range.

Batch marks on all components for traceability.

Declaration of conformity accompanies each sling.

FINISH:		DO NOT SCALE DRAWING		REVISION	
UNLESS OTHERWISE SPECIFIED DIMENSIONS ARE IN MILLIMETERS TOLERANCES:		MATERIAL:		TITLE: Grade 10 Single Leg Chain Sling	
LINEAR:				A3	
ANGULAR:		WEIGHT:		SCALE:1:1	
				SHEET 1 OF 1	



Tel (+1) 713 489 5335
info@liftingequipmentstore.us

LIFTING EQUIPMENT STORE

6mm (1/4") Grade 10 Single Leg Chain Sling, Master Link one end , Self locking hook the other

WLL 1.4 t (WLL 2700lbs)

Description	QTY
Master link	1
Connector	1
Grade 10 chain to suit bearing length	1
Clevis self locking hook	1

8mm (5/16") Grade 10 Single Leg Chain Sling, Master Link one end , Self locking hook the other

WLL 2.5 t (WLL 5700lbs)

Description	QTY
Master link	1
Connector	1
Grade 10 chain to suit bearing length	1
Clevis self locking hook	1

10mm (3/8") Grade 10 Single Leg Chain Sling, Master Link one end , Self locking hook the other

WLL 4 t (WLL 8800 lbs)

Description	QTY
Master link	1
Connector	1
Grade 10 chain to suit bearing length	1
Clevis self locking hook	1

13mm (1/2") Grade 10 Single Leg Chain Sling, Master Link one end , Self locking hook the other

WLL 6.7 t (WLL 15000lbs)

Description	QTY
Master link	1
Connector	1
Grade 10 chain to suit bearing length	1
Clevis self locking hook	1

16mm (5/8") Grade 10 Single Leg Chain Sling, Master Link one end , Self locking hook the other

WLL 10 t (WLL 22600lbs)

Description	QTY
Master link	1
Connector	1
Grade 10 chain to suit bearing length	1
Clevis self locking hook	1

Bearing length from 1 mtr (3ft) to 9mtr (30ft)

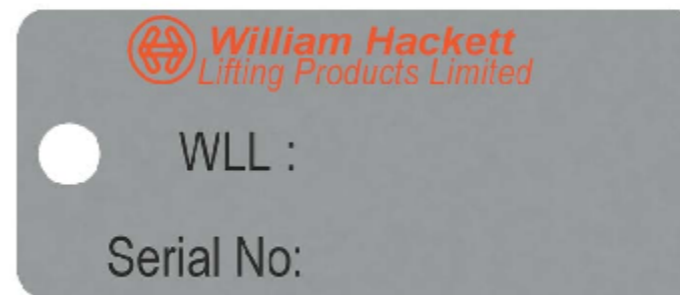


Master link

Grade 10 Connector

Grade 10 Chain

Grade 10 Chain tag



Chain tag attachment loop

Grade 10 Clevis Self locker

Grade 10 Alloy Chain Slings comply with the following standards:

ASME B30-09-18 -G10 Sling
ASTM A973/A973M - G10 Sling

Components - BS EN 1677-1
ASTM A952-A952M , ASME B30.26

Chain & Components- Proof tested to 2.5 times WLL - This exceeds the ASTM requirements. Assembled sling proof tested to 2 times the WLL.

Chain - Tensile strength following heat treatment meets or exceeds all existing ASTM and OSHA specification requirements.

These products are suitable for lifting operations from -40°C to 200°C. Consult our technical department for operations outside of this range.

Batch marks on all components for traceability.

Declaration of conformity accompanies each sling.

FINISH:		DO NOT SCALE DRAWING		REVISION
	NAME	SIGNATURE	DATE	
DRAWN	Will Frater			
CHK'D				
APPV'D				
UNLESS OTHERWISE SPECIFIED DIMENSIONS ARE IN MILLIMETERS		MATERIAL:		TITLE: Grade 10 Single Leg Chain Sling
TOLERANCES:		WEIGHT:		A3
LINEAR:		SCALE: 1:1		SHEET 1 OF 1
ANGULAR:				