



Tel (+1) 713 488 5335
info@liftingequipmentstore.us

LIFTING EQUIPMENT STORE

6mm (1/4") Grade 10 Single Leg Chain Sling, Master Link one end, Sling hook the other

WLL 1.4 t (WLL 2700lbs)

Description	QTY
Master link	1
Connector	1
Grab hook	1
Grade 10 chain to suit bearing length	1
Clevis sling hook	1

8mm (5/16") Grade 10 Single Leg Chain Sling, Master Link one end, Sling hook the other

WLL 2.5 t (WLL 5700lbs)

Description	QTY
Master link	1
Connector	1
Grab hook	1
Grade 10 chain to suit bearing length	1
Clevis sling hook	1

10mm (3/8") Grade 10 Single Leg Chain Sling, Master Link one end, Sling hook the other

WLL 4 t (WLL 8800 lbs)

Description	QTY
Master link	1
Connector	1
Grab hook	1
Grade 10 chain to suit bearing length	1
Clevis sling hook	1

13mm (1/2") Grade 10 Single Leg Chain Sling, Master Link one end, Sling hook the other

WLL 6.7 t (WLL 15000lbs)

Description	QTY
Master link	1
Connector	1
Grab hook	1
Grade 10 chain to suit bearing length	1
Clevis sling hook	1

16mm (5/8") Grade 10 Single Leg Chain Sling, Master Link one end, Sling hook the other

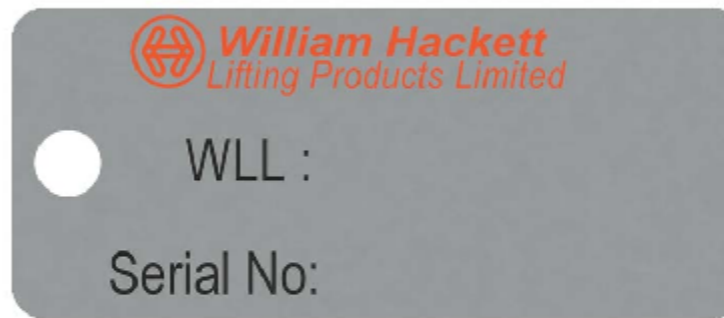
WLL 10 t (WLL 22600lbs)

Description	QTY
Master link	1
Connector	1
Grab hook	1
Grade 10 chain to suit bearing length	1
Clevis sling hook	1

Bearing length from 1 mtr (3ft) to 9mtr (30ft)



Grade10 Chain tag



Chain tag attachment loop

Grade 10 Alloy Chain Slings comply with the following standards:

ASME B30-09-18 -G10 Sling
ASTM A973/A973M - G10 Sling

Components - BS EN 1677-1
ASTM A952-A952M , ASME B30.26

Chain & Components- Proof tested to 2.5 times WLL - This exceeds the ASTM requirements. Assembled sling proof tested to 2 times the WLL.

Chain - Tensile strength following heat treatment meets or exceeds all existing ASTM and OSHA specification requirements.

These products are suitable for lifting operations from -40°C to 200°C. Consult our technical department for operations outside of this range.

Batch marks on all components for traceability.

Declaration of conformity accompanies each sling.

FINISH:		DO NOT SCALE DRAWING		REVISION	
UNLESS OTHERWISE SPECIFIED DIMENSIONS ARE IN MILLIMETERS TOLERANCES:		MATERIAL:		TITLE: Grade 10 Single Leg Chain Sling	
LINEAR:				A3	
ANGULAR:		WEIGHT:		SCALE:1:1	
				SHEET 1 OF 1	

6mm (1/4") Grade 10 Single Leg Chain Sling, Master Link one end , Self locking hook the other

WLL 1.4 t (WLL 2700lbs)	
Description	QTY
Master link	1
Connector	1
Grab hook	1
Grade 10 chain to suit bearing length	1
Clevis self locking hook	1

8mm (5/16") Grade 10 Single Leg Chain Sling, Master Link one end , Self locking hook the other

WLL 2.5 t (WLL 5700lbs)	
Description	QTY
Master link	1
Connector	1
Grab hook	1
Grade 10 chain to suit bearing length	1
Clevis self locking hook	1

10mm (3/8") Grade 10 Single Leg Chain Sling, Master Link one end , Self locking hook the other

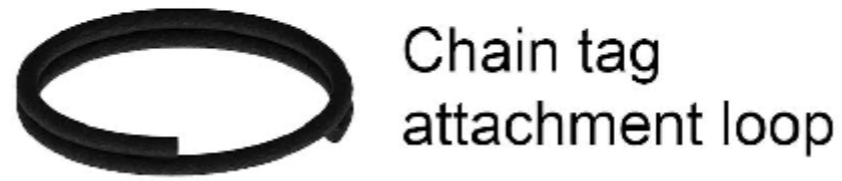
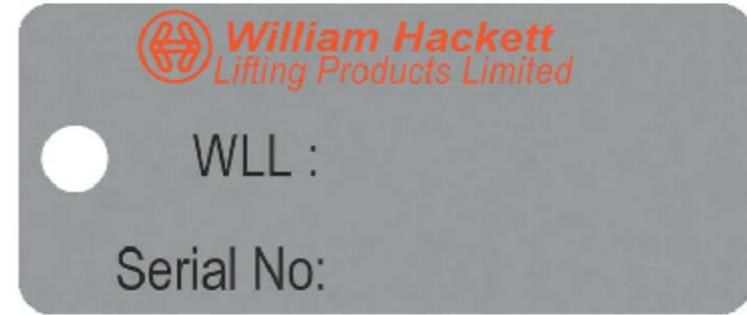
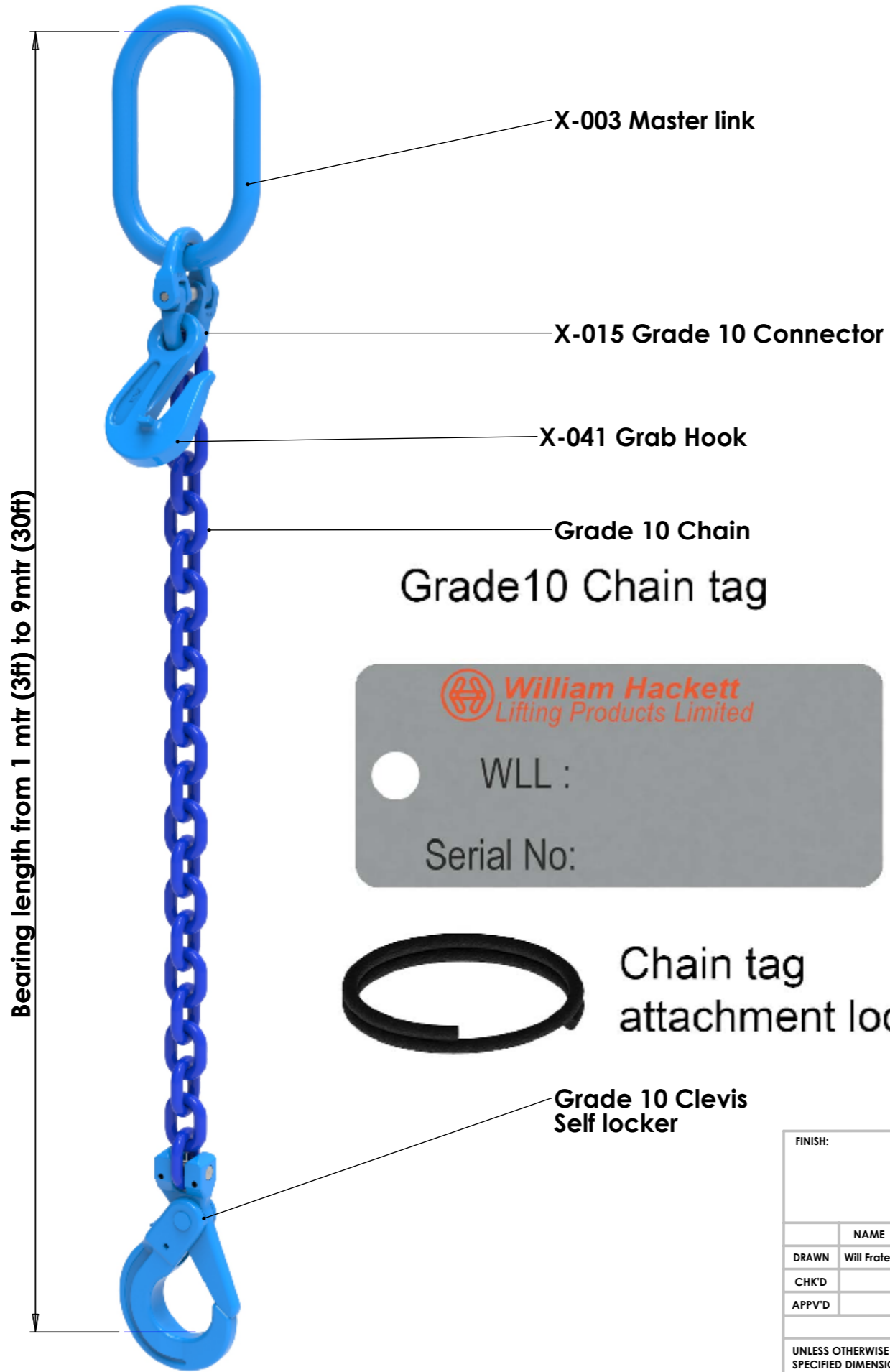
WLL 4 t (WLL 8800 lbs)	
Description	QTY
Master link	1
Connector	1
Grab hook	1
Grade 10 chain to suit bearing length	1
Clevis self locking hook	1

13mm (1/2") Grade 10 Single Leg Chain Sling, Master Link one end , Self locking hook the other

WLL 6.7 t (WLL 15000lbs)	
Description	QTY
Master link	1
Connector	1
Grab hook	1
Grade 10 chain to suit bearing length	1
Clevis self locking hook	1

16mm (5/8") Grade 10 Single Leg Chain Sling, Master Link one end , Self locking hook the other

WLL 10 t (WLL 22600lbs)	
Description	QTY
Master link	1
Connector	1
Grab hook	1
Grade 10 chain to suit bearing length	1
Clevis self locking hook	1



Grade 10 Alloy Chain Slings comply with the following standards:

ASME B30-09-18 -G10 Sling
ASTM A973/A973M - G10 Sling

Components - BS EN 1677-1
ASTM A952-A952M , ASME B30.26

Chain & Components- Proof tested to 2.5 times WLL - This exceeds the ASTM requirements. Assembled sling proof tested to 2 times the WLL.

Chain - Tensile strength following heat treatment meets or exceeds all existing ASTM and OSHA specification requirements.

These products are suitable for lifting operations from -40°C to 200°C. Consult our technical department for operations outside of this range.

Batch marks on all components for traceability.

Declaration of conformity accompanies each sling.

FINISH:		DO NOT SCALE DRAWING		REVISION
DRAWN: Will Frater		SIGNATURE:	DATE:	
CHK'D:				
APPV'D:				
UNLESS OTHERWISE SPECIFIED DIMENSIONS ARE IN MILLIMETERS TOLERANCES: LINEAR: ANGULAR:		MATERIAL:	TITLE: Grade 10 Single Leg Chain Sling	
		WEIGHT:	SCALE: 1:1	A3
		SHEET 1 OF 1		