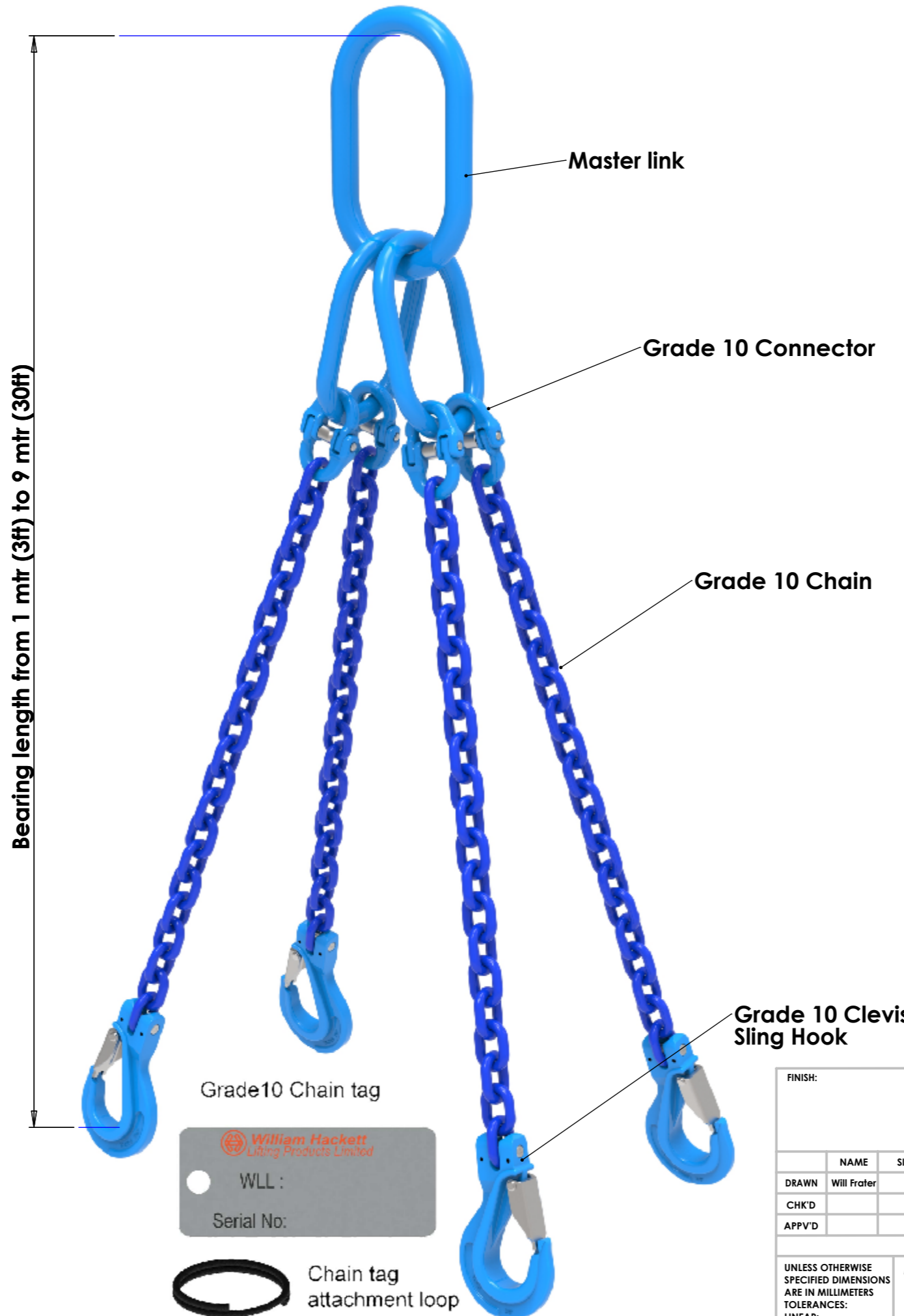


LES USA

Tel (+1) 713 489 5335
info@liftingequipmentstore.us

LIFTING EQUIPMENT STORE

6mm (1/4") Grade 10 four Leg Chain Sling, Master Link one end , clevis sling hook the other	
WLL 2.9 t (WLL 5700lbs)	
Description	QTY
Master link	1
Connector	4
Grade 10 chain to suit bearing length	4
Clevis sling hook	4
8mm (5/16") Grade 10 four Leg Chain Sling, Master Link one end , clevis sling hook the other	
WLL 5.3 t (WLL 12100lbs)	
Description	QTY
Master link	1
Connector	4
Grade 10 chain to suit bearing length	4
Clevis sling hook	4
10mm (3/8") Grade 10 four Leg Chain Sling, Master Link one end , clevis sling hook the other	
WLL 8.4 t (WLL 18700 lbs)	
Description	QTY
Master link	1
Connector	4
Grade 10 chain to suit bearing length	4
Clevis sling hook	4
13mm (1/2") Grade 10 four Leg Chain Sling, Master Link one end , clevis sling hook the other	
WLL 14 t (WLL 31800lbs)	
Description	QTY
Master link	1
Connector	4
Grade 10 chain to suit bearing length	4
Clevis sling hook	4
16mm (5/8") Grade 10 four Leg Chain Sling, Master Link one end , clevis sling hook the other	
WLL 21 t (WLL 47900lbs)	
Description	QTY
Master link	1
Connector	4
Grade 10 chain to suit bearing length	4
Clevis sling hook	4



Grade 10 Alloy Chain Slings comply with the following standards:

ASME B30-09-18 -G10 Sling
ASTM A973/A973M - G10 Sling

Components - BS EN 1677-1
ASTM A952-A952M , ASME B30.26

Chain & Components- Proof tested to 2.5 times WLL - This exceeds the ASTM requirements. Assembled sling proof tested to 2 times the WLL.

Chain - Tensile strength following heat treatment meets or exceeds all existing ASTM and OSHA specification requirements.

These products are suitable for lifting operations from -40°C to 200°C. Consult our technical department for operations outside of this range.

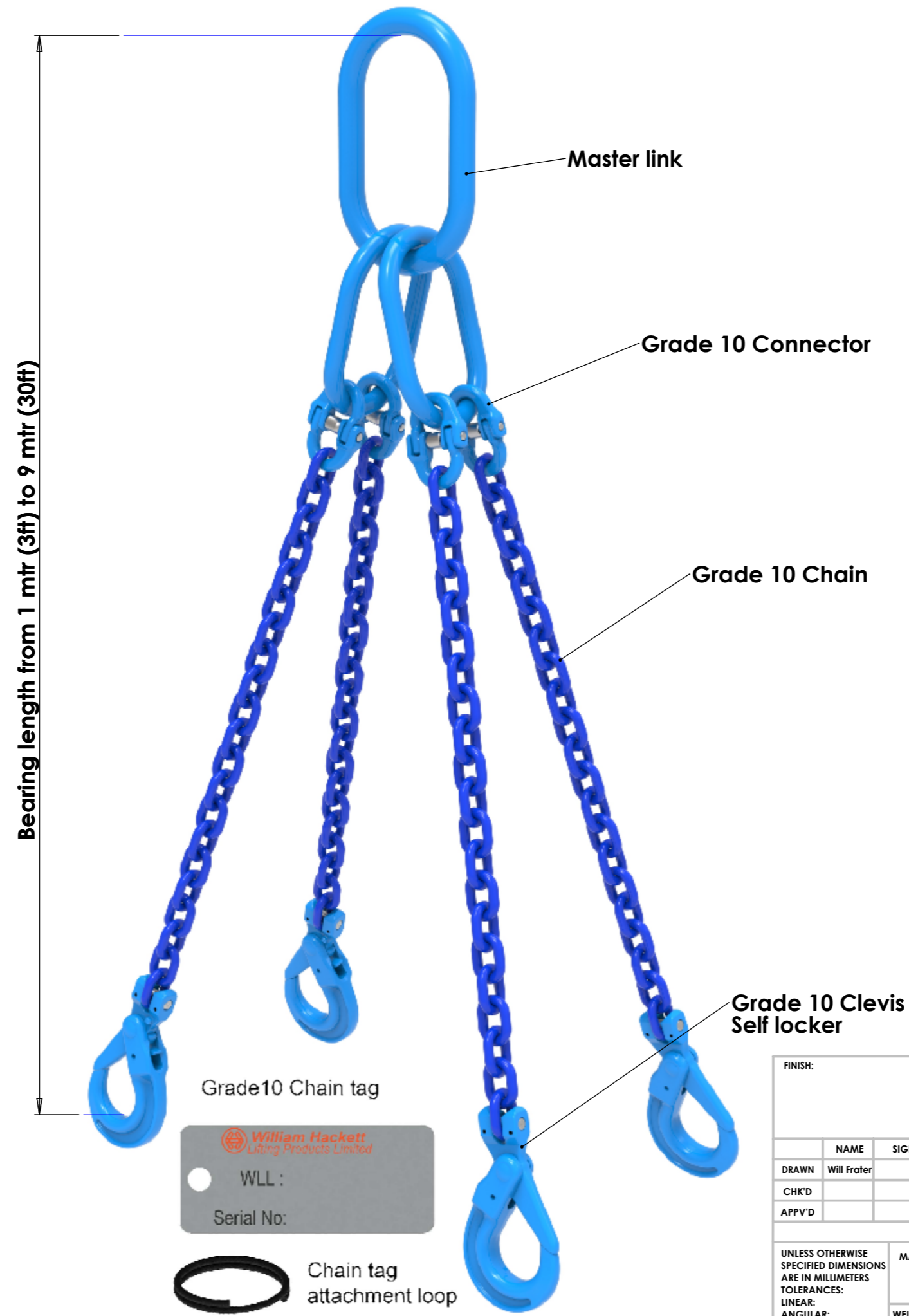
Batch marks on all components for traceability.

Declaration of conformity accompanies each sling.

FINISH:		DO NOT SCALE DRAWING		REVISION
DRAWN: Will Frater		SIGNATURE:	DATE:	
CHK'D:				
APPV'D:				
UNLESS OTHERWISE SPECIFIED DIMENSIONS ARE IN MILLIMETERS		MATERIAL:		TITLE: Grade 10 Quad Leg Chain Sling
TOLERANCES:		WEIGHT:		A3
LINEAR:		SCALE:1:1		SHEET 1 OF 1
ANGULAR:				



6mm (1/4") Grade 10 four Leg Chain Sling, Master Link one end , Self locking hook the other	
WLL 2.9 t (WLL 5700lbs)	
Description	QTY
Master link	1
Connector	4
Grade 10 chain to suit bearing length	4
Clevis self locking hook	4
8mm (5/16") Grade 10 four Leg Chain Sling, Master Link one end , Self locking hook the other	
WLL 5.3 t (WLL 12100lbs)	
Description	QTY
Master link	1
Connector	4
Grade 10 chain to suit bearing length	4
Clevis self locking hook	4
10mm (3/8") Grade 10 four Leg Chain Sling, Master Link one end , Self locking hook the other	
WLL 8.4 t (WLL 18700 lbs)	
Description	QTY
Master link	1
Connector	4
Grade 10 chain to suit bearing length	4
Clevis self locking hook	4
13mm (1/2") Grade 10 four Leg Chain Sling, Master Link one end , Self locking hook the other	
WLL 14 t (WLL 31800lbs)	
Description	QTY
Master link	1
Connector	4
Grade 10 chain to suit bearing length	4
Clevis self locking hook	4
16mm (5/8") Grade 10 four Leg Chain Sling, Master Link one end , Self locking hook the other	
WLL 21 t (WLL 47900lbs)	
Description	QTY
Master link	1
Connector	4
Grade 10 chain to suit bearing length	4
Clevis self locking hook	4



Grade 10 Alloy Chain Slings comply with the following standards:

ASME B30-09-18 -G10 Sling
ASTM A973/A973M - G10 Sling

Components - BS EN 1677-1
ASTM A952-A952M , ASME B30.26

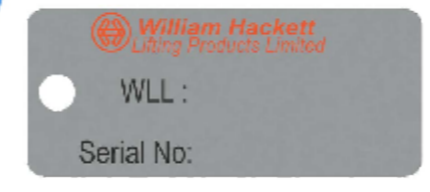
Chain & Components- Proof tested to 2.5 times WLL - This exceeds the ASTM requirements. Assembled sling proof tested to 2 times the WLL.

Chain - Tensile strength following heat treatment meets or exceeds all existing ASTM and OSHA specification requirements.

These products are suitable for lifting operations from -40°C to 200°C. Consult our technical department for operations outside of this range.

Batch marks on all components for traceability.

Declaration of conformity accompanies each sling.



FINISH:		DO NOT SCALE DRAWING		REVISION	
UNLESS OTHERWISE SPECIFIED DIMENSIONS ARE IN MILLIMETERS		MATERIAL:		TITLE: Grade 10 Quad Leg Chain Sling	
TOLERANCES:		WEIGHT:		A3	
LINEAR:		SCALE:1:1		SHEET 1 OF 1	
ANGULAR:					