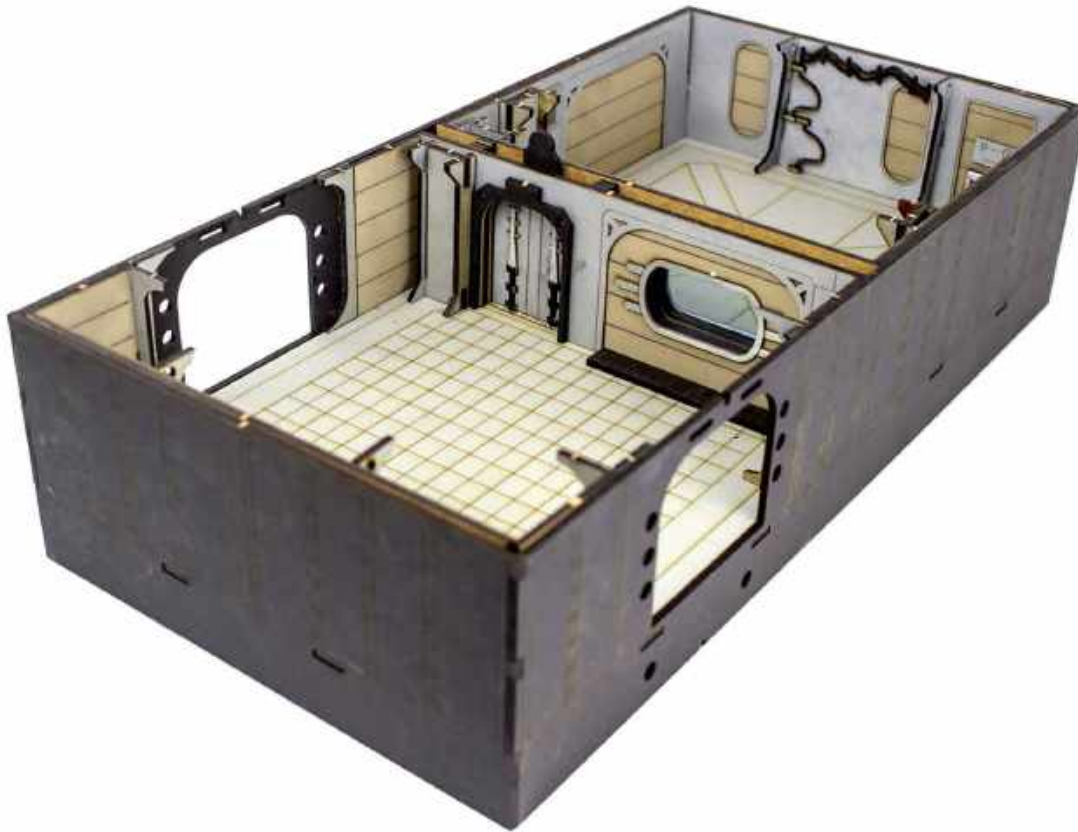


THE ARK - LARGE ROOM - HVN#1018

ASSEMBLY INSTRUCTIONS



Before starting this kit, make sure you read through all the instructions carefully. Always remember to dry fit parts and sand as needed.

We use two kinds of glue when assembling our kits. Super glue (cyanoacrylate) or PVA glue.

You can repaint or weather our kits easily! The paint we use is a great base primer and will take paint nicely.

If you have any issues during assembly, please contact us and we'll always help!

We would like to take the time to thank you for purchasing a Black Site Studios product!

www.blacksitestudio.com

WE SUGGEST HAVING THESE TOOLS ON HAND



IMPORTANT SYMBOLS YOU'LL FIND ON YOUR JOURNEY



ATTENTION



DRY FIT



NO GLUE



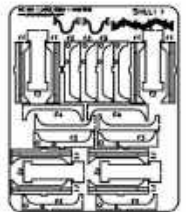
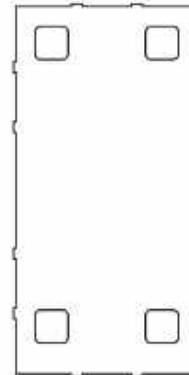
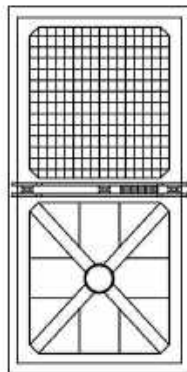
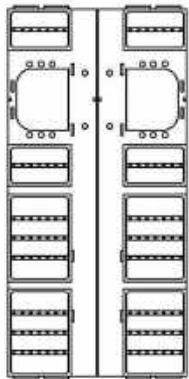
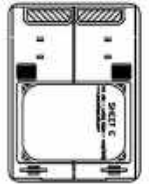
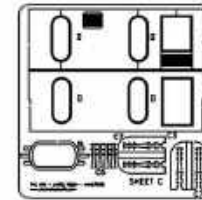
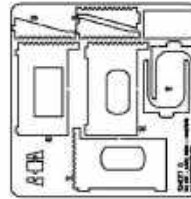
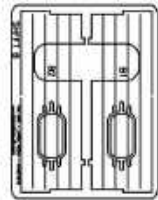
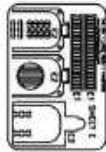
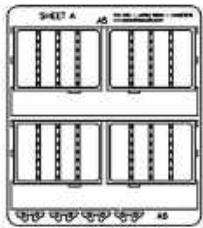
GLUE



TRIM/SAND

THE ARK - LARGE ROOM - HVN#1018

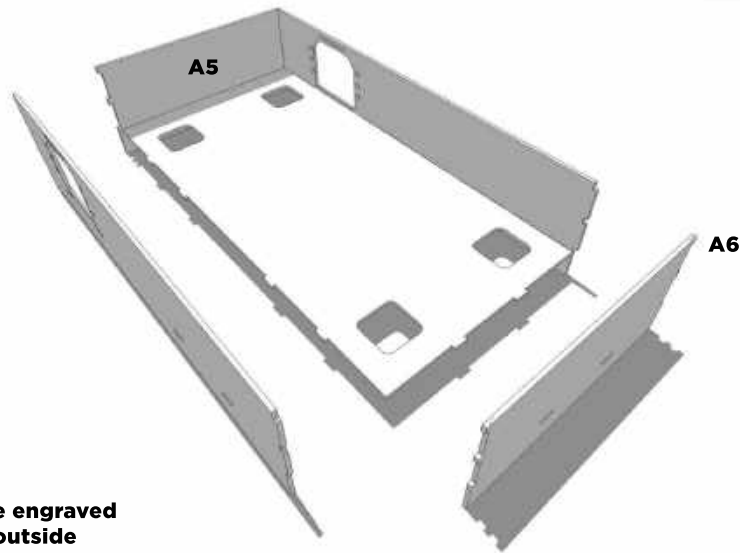
SHEETS AND PARTS LIST



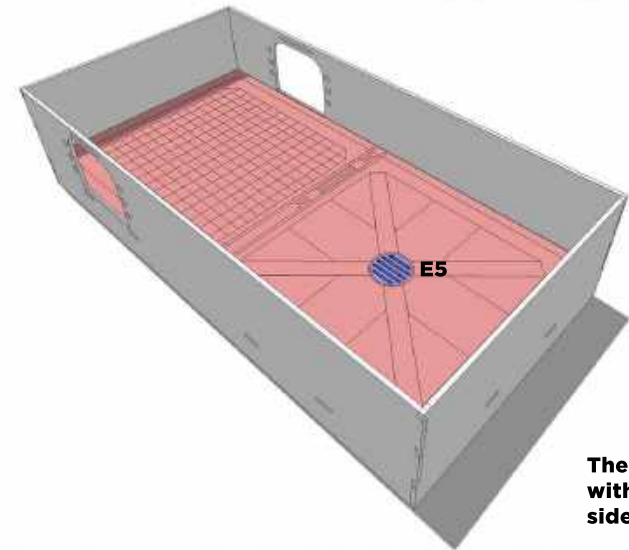
**CHECK YOUR KIT CONTENTS
BEFORE STARTING**

THE ARK - LARGE ROOM - HVN#1018

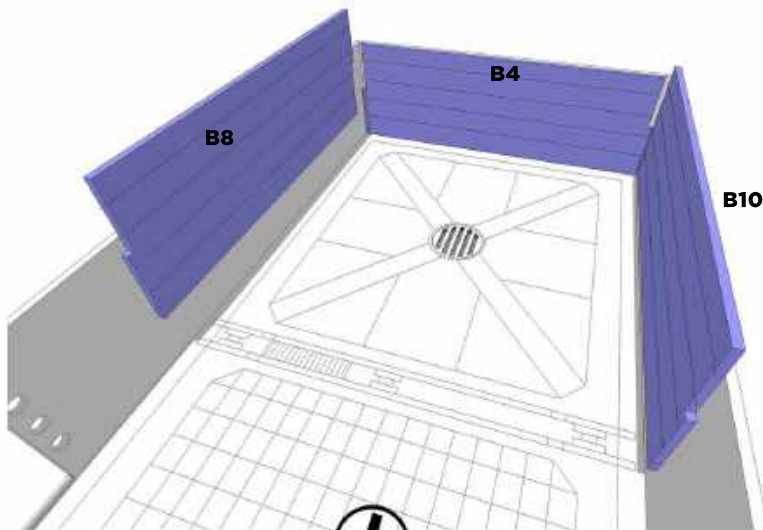
PAGE 1



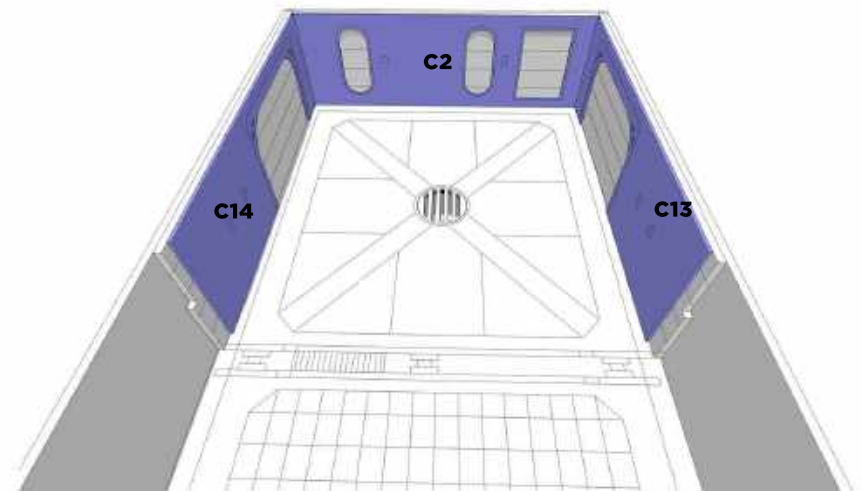
Face the engraved details outside



The base can be placed with the vent on either side.



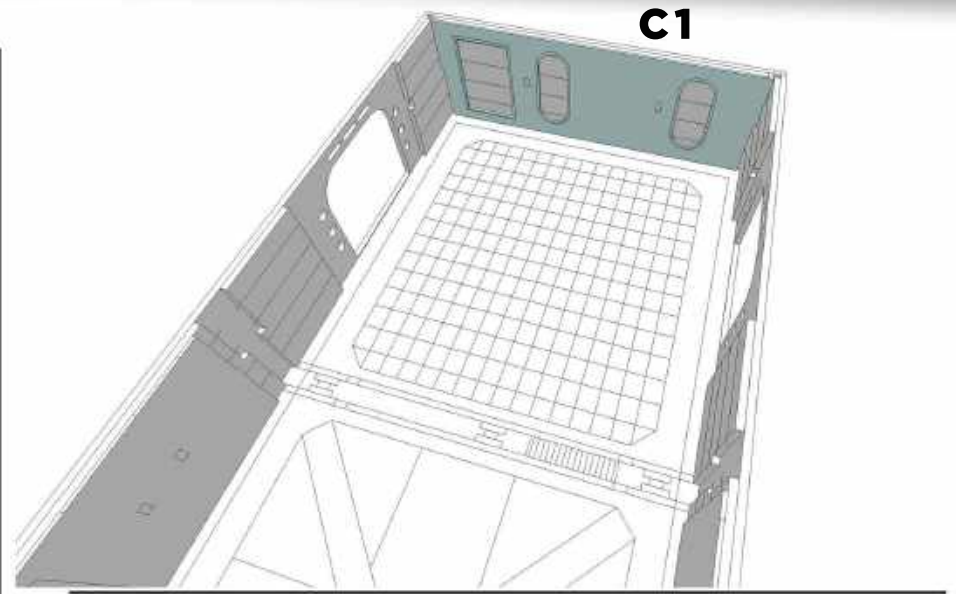
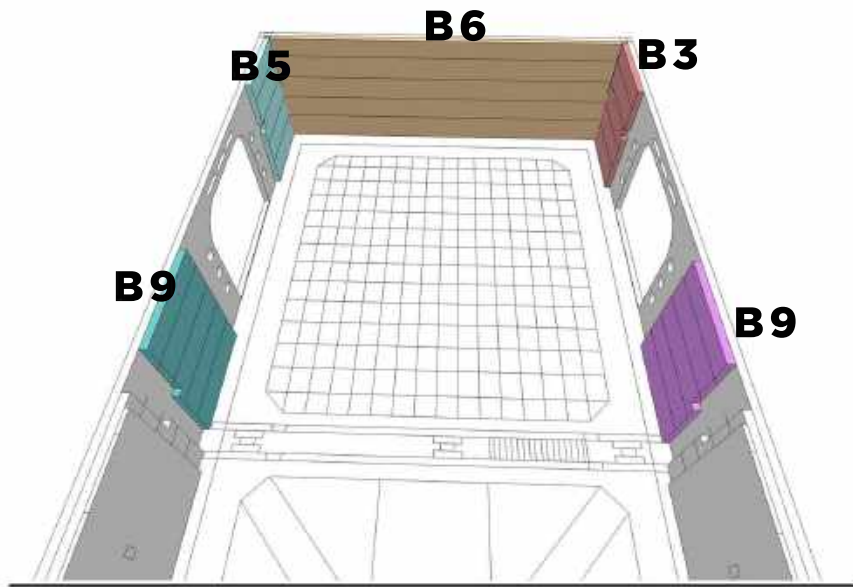
Dry test & sand if needed.



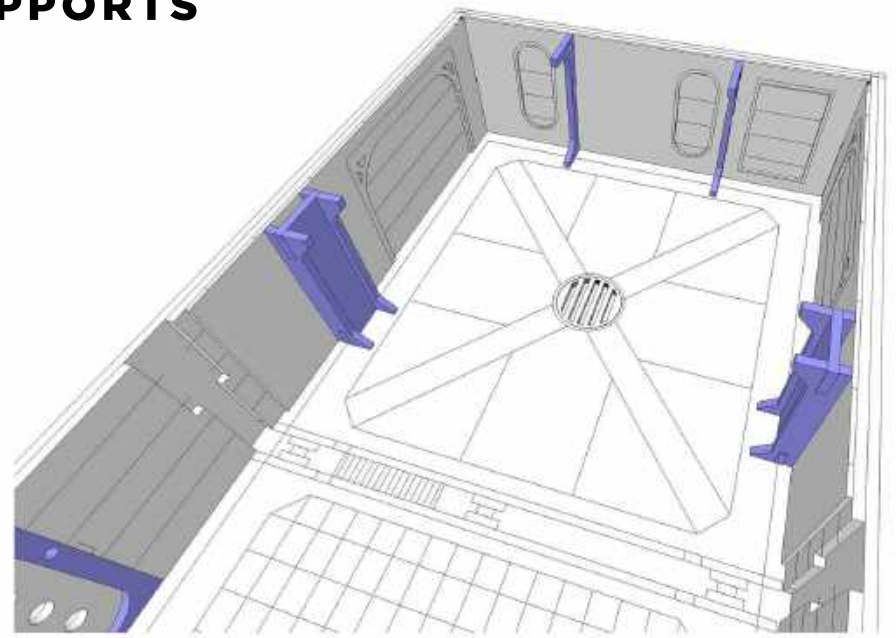
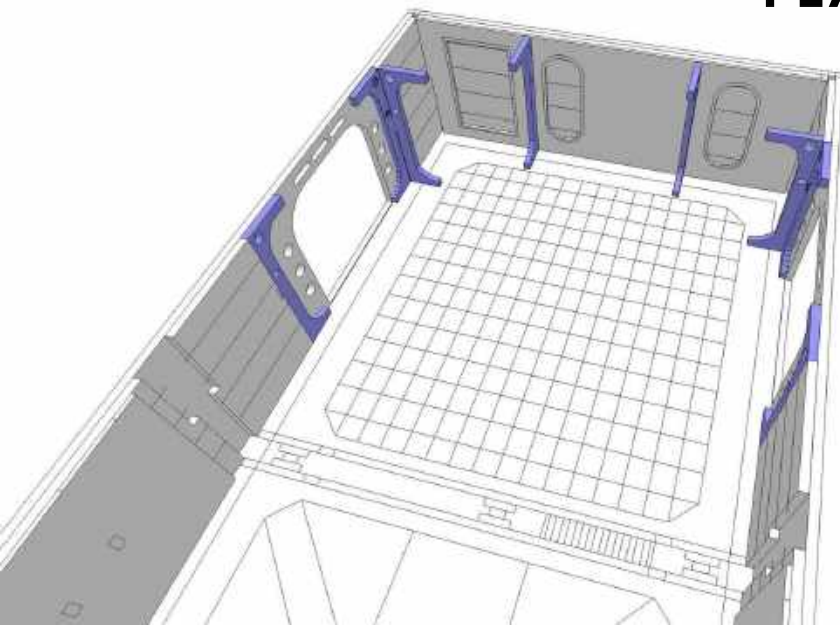
The card layer is sometimes best glued on with PVA.

THE ARK - LARGE ROOM

PAGE 2

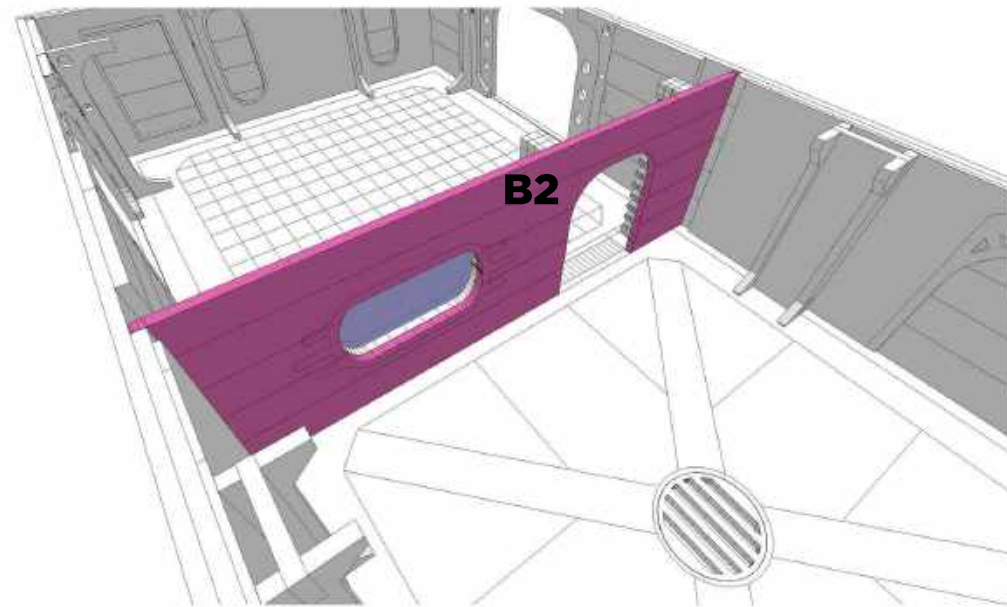
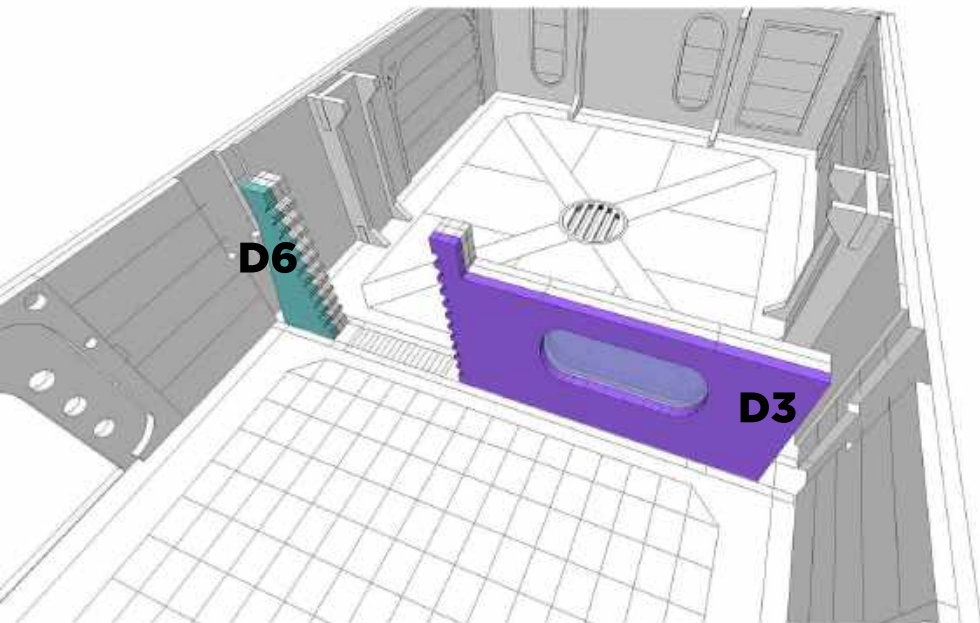
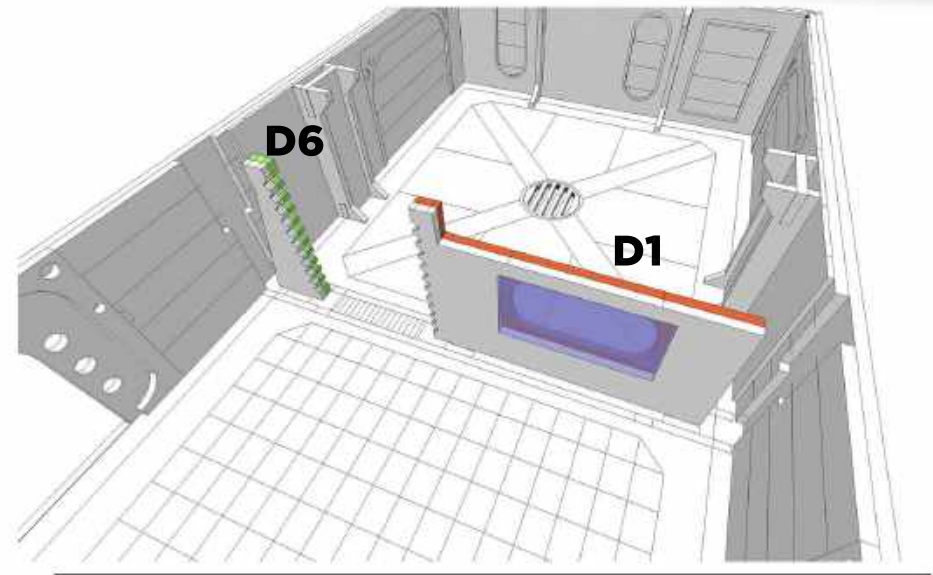
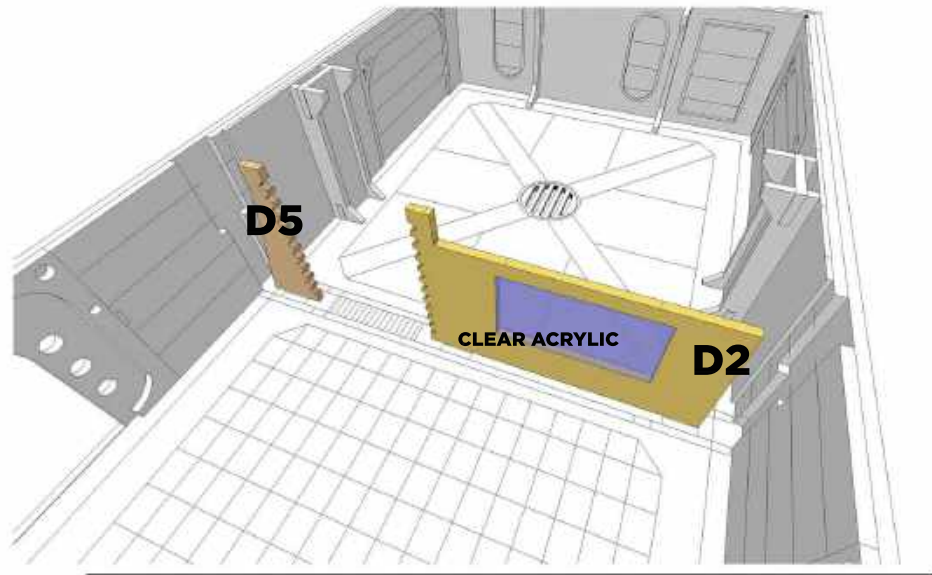


PLACE IN SUPPORTS



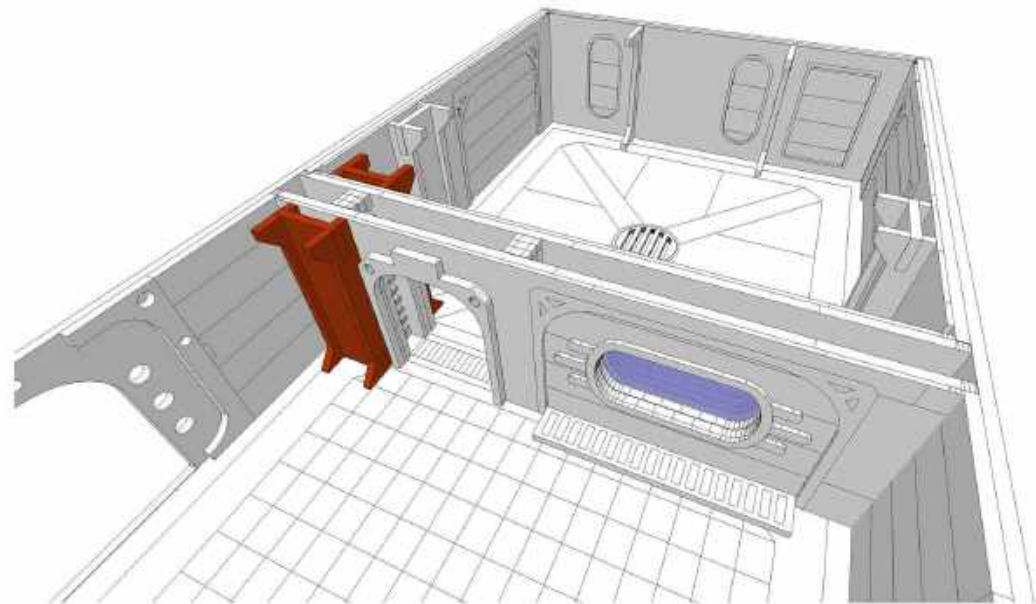
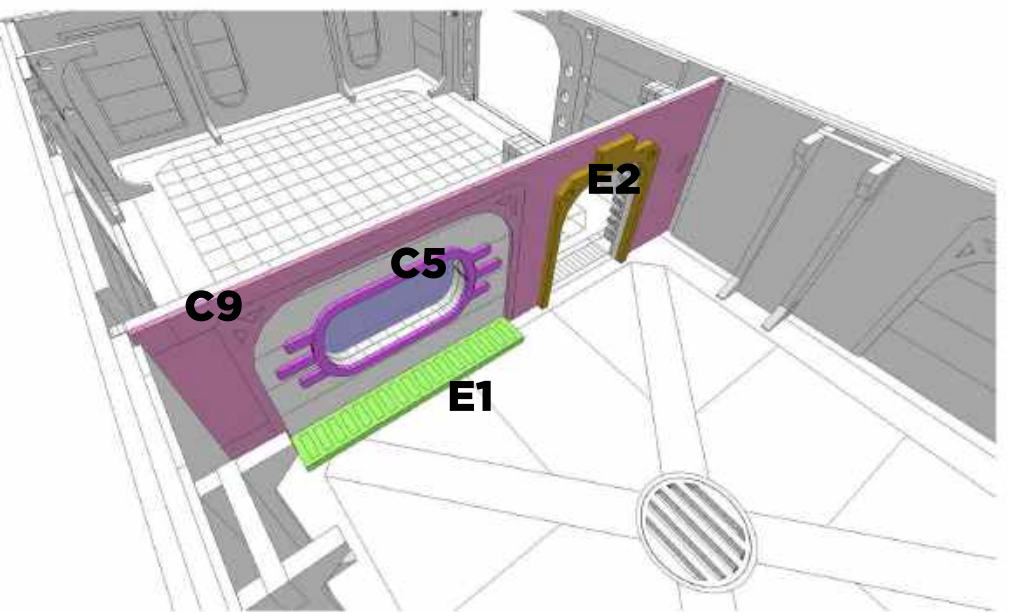
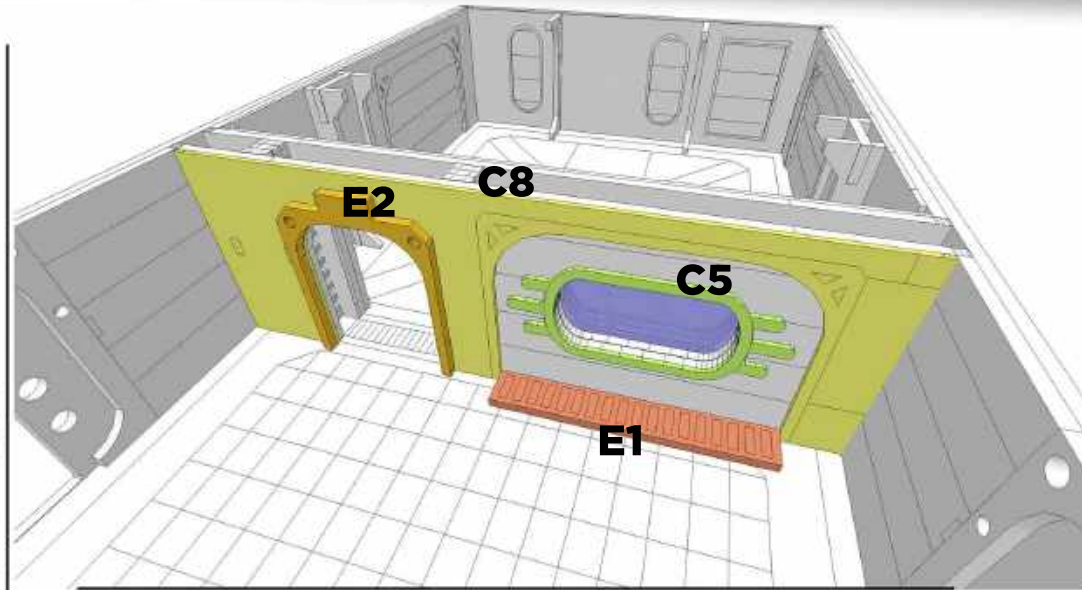
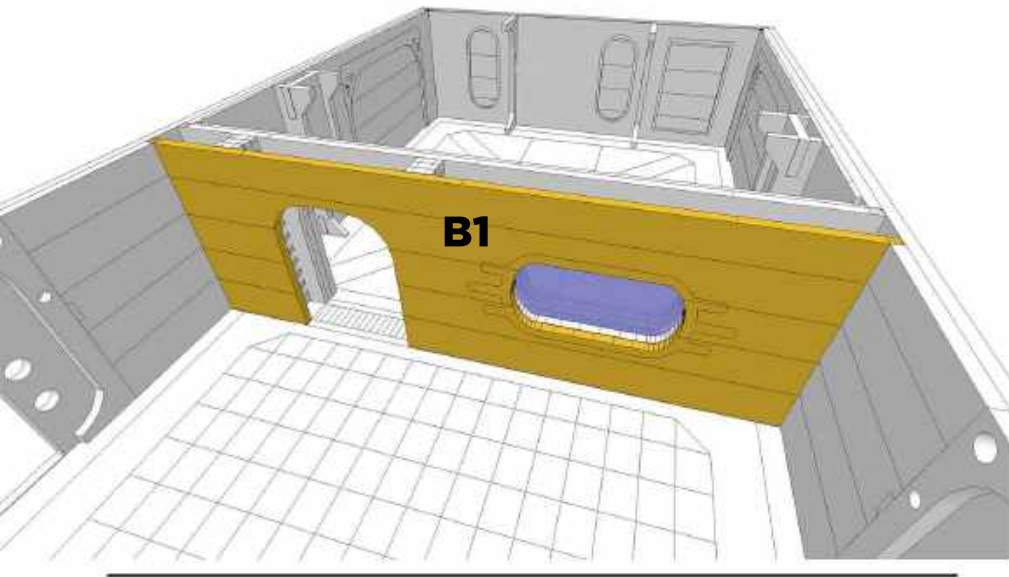
THE ARK - LARGE ROOM

PAGE 3



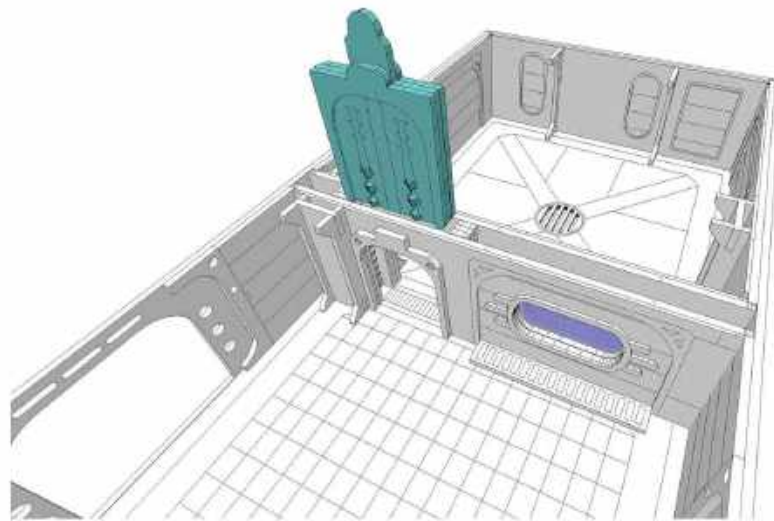
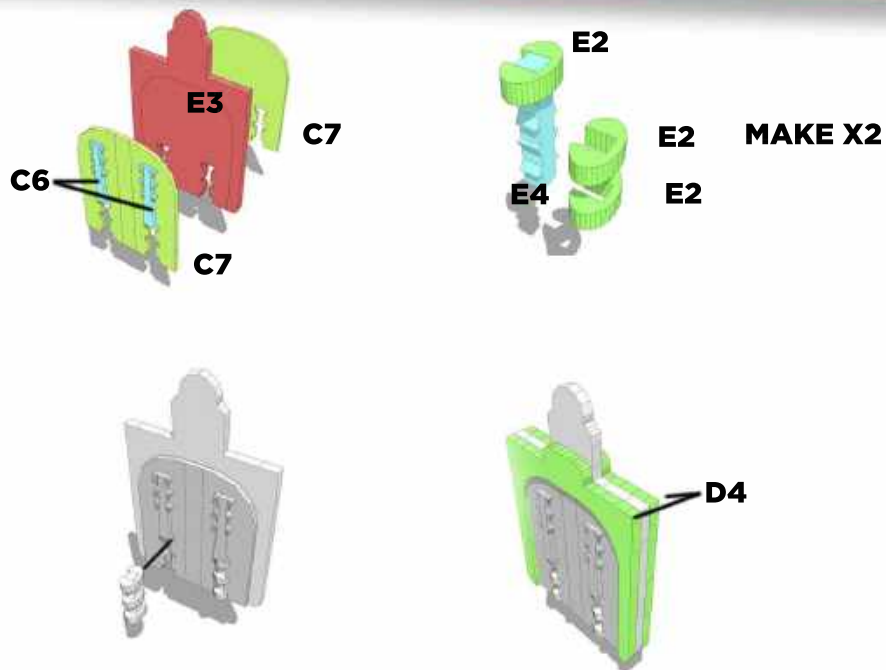
THE ARK - LARGE ROOM

PAGE 4



THE ARK - LARGE ROOM

PAGE 5



DOOR IS DESIGNED TO LIFT OUT