

SOLOMON BUILDING

ASSEMBLY INSTRUCTIONS



Before starting this kit, make sure you read through all the instructions carefully. Always remember to dry fit parts and sand as needed.

We use two kinds of glue when assembling our kits. Super glue (cyanoacrylate) or PVA glue.

You can repaint or weather our kits easily! The paint we use is a great base primer and will take paint nicely.

If you have any issues during assembly, please contact us and we'll always help!

We would like to take the time to thank you for purchasing a Black Site Studios product!

www.blacksitestudio.com

WE SUGGEST HAVING THESE TOOLS ON HAND



IMPORTANT SYMBOLS YOU'LL FIND ON YOUR JOURNEY



ATTENTION



DRY FIT



NO GLUE



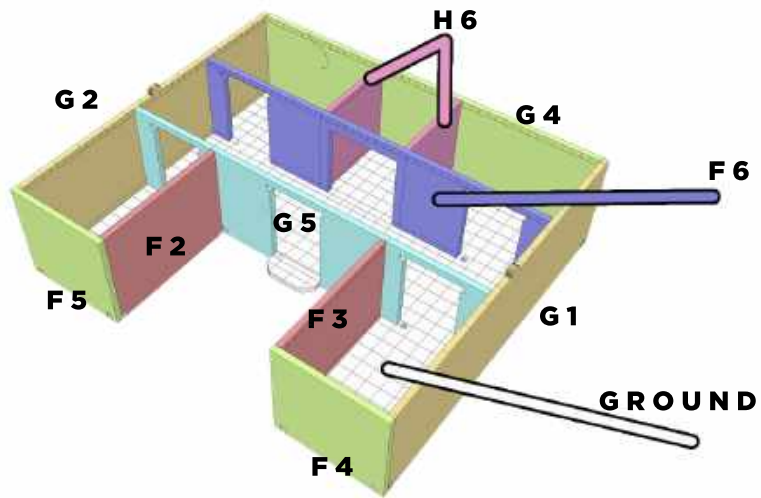
GLUE



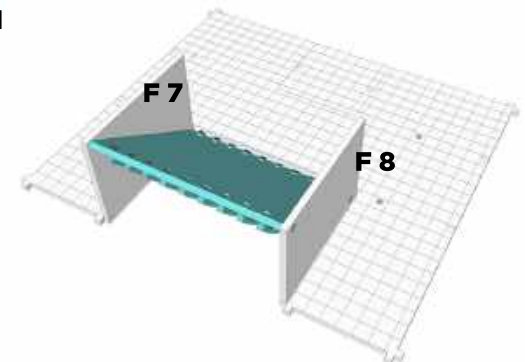
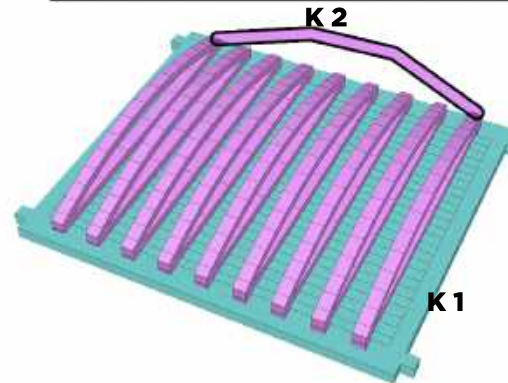
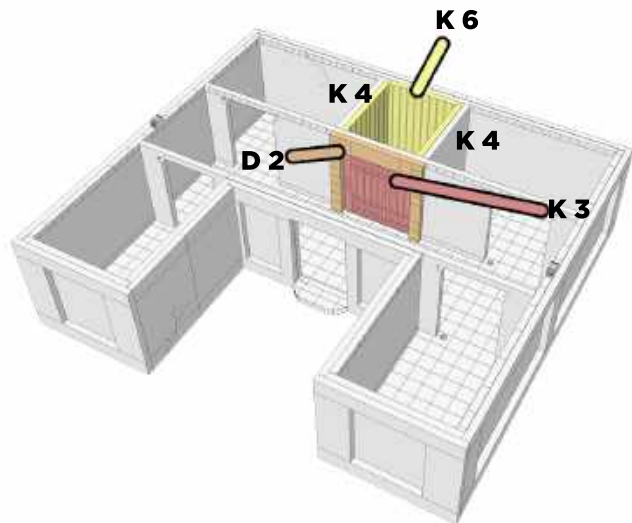
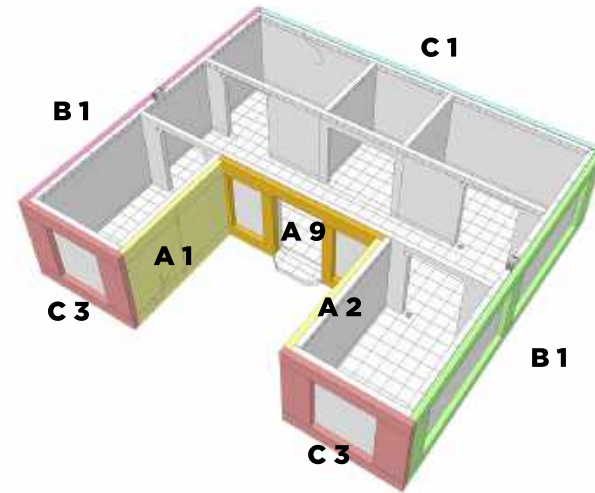
TRIM/SAND

SOLOMON BUILDING

PAGE 1



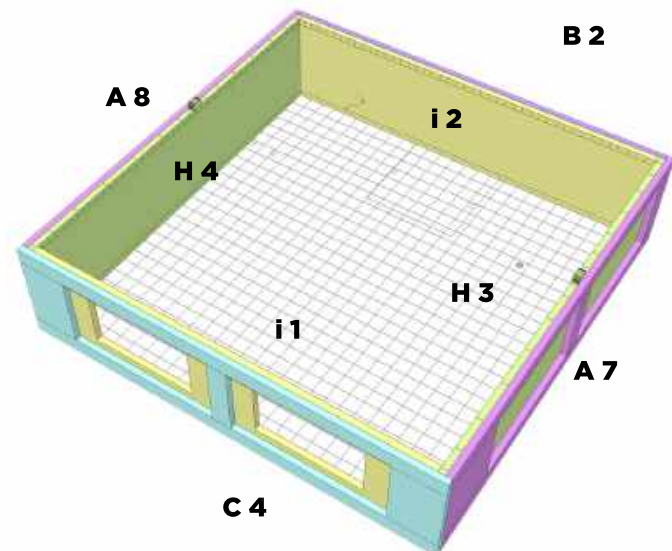
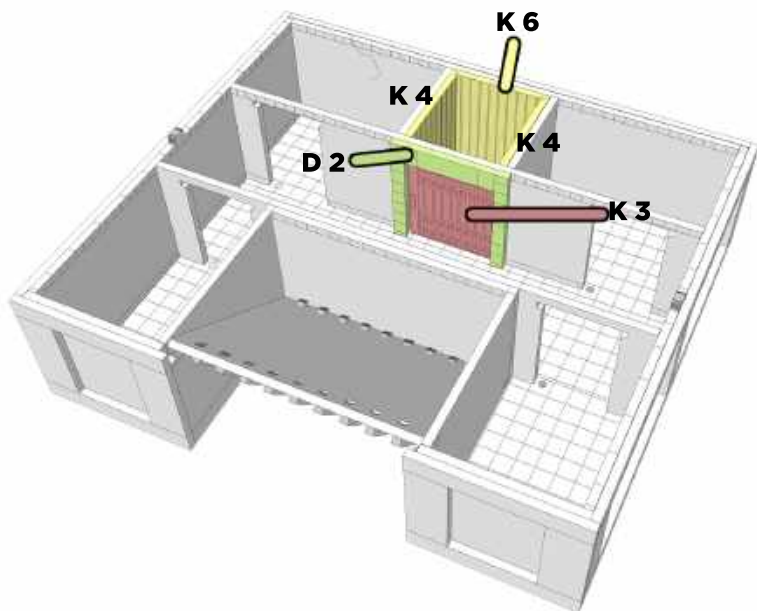
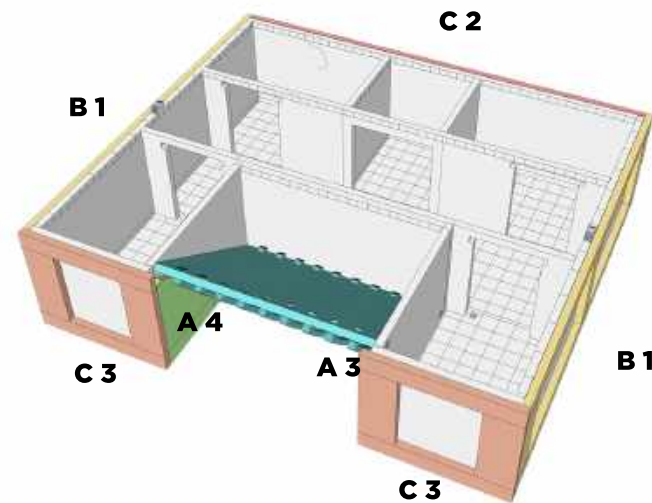
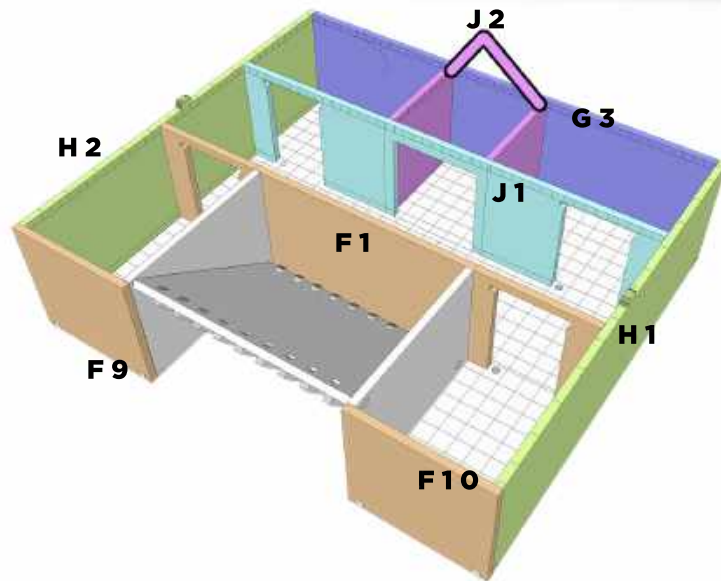
GROUND
FLOOR



FIRST FLOOR

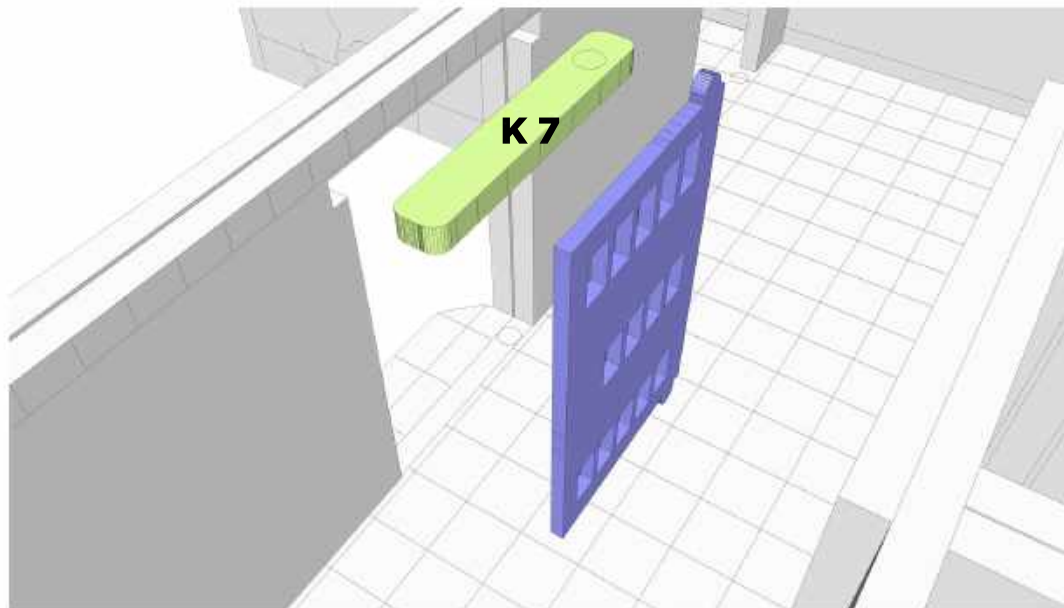
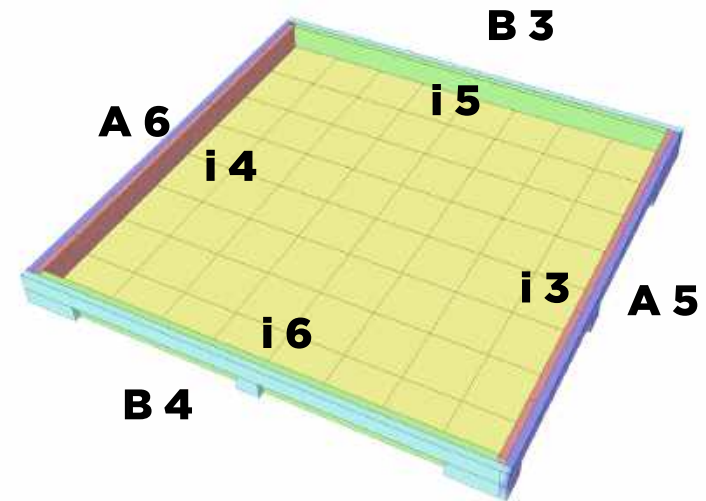
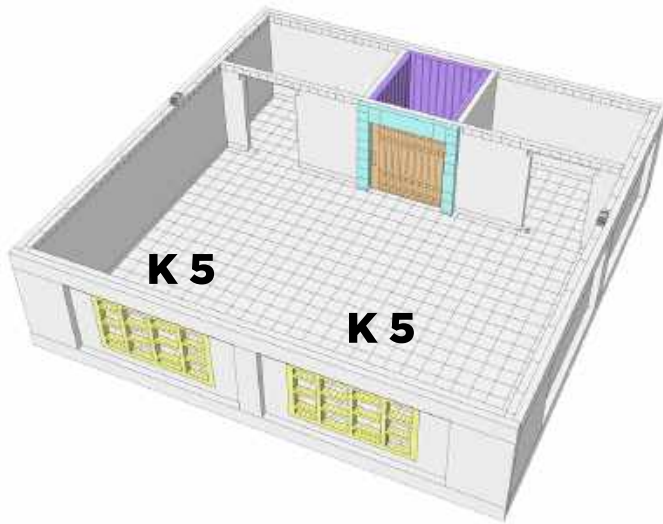
SOLOMON BUILDING

PAGE 2



SOLOMON BUILDING

PAGE 3



The doors are designed to open and close. Only glue along the top hinge and place door into holes provided.