

NORTHWOODS MALL - ATRIUM

ASSEMBLY INSTRUCTIONS



Before starting this kit, make sure you read through all the instructions carefully. Always remember to dry fit parts and sand as needed.

We use two kinds of glue when assembling our kits. Super glue (cyanoacrylate) or PVA glue.

You can repaint or weather our kits easily! The paint we use is a great base primer and will take paint nicely.

If you have any issues during assembly, please contact us and we'll always help!

We would like to take the time to thank you for purchasing a Black Site Studios product!

www.blacksitestudio.com

WE SUGGEST HAVING THESE TOOLS ON HAND



IMPORTANT SYMBOLS YOU'LL FIND ON YOUR JOURNEY



ATTENTION



DRY FIT



NO GLUE



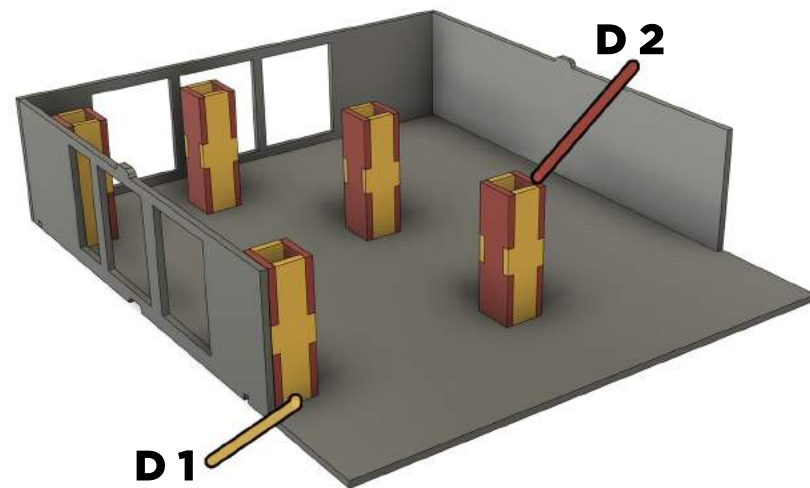
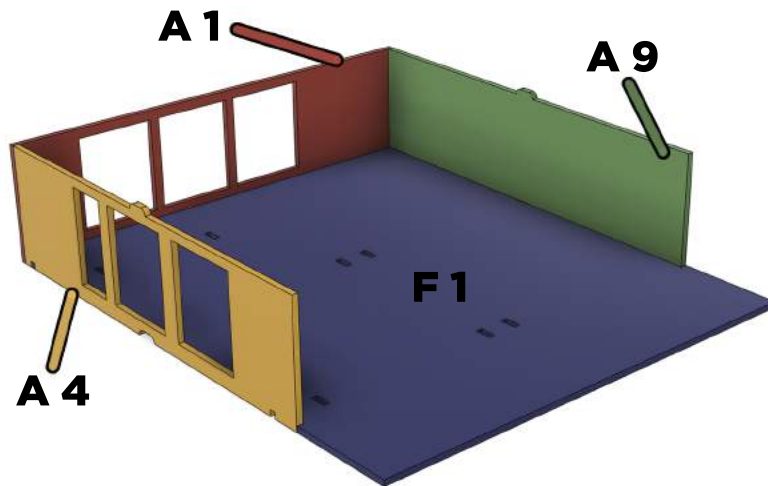
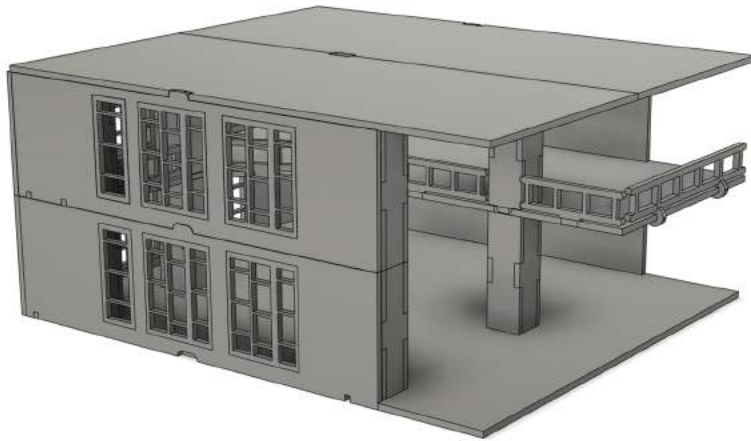
GLUE



TRIM/SAND

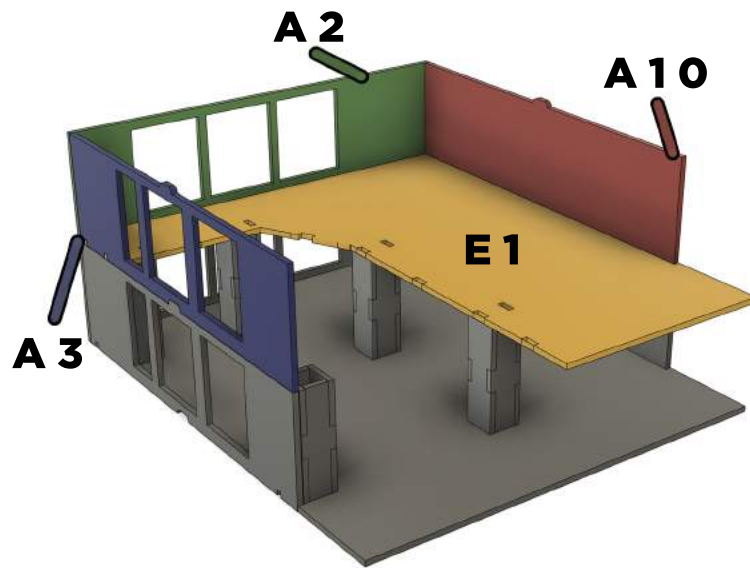
NORTHWOODS MALL - ATRIUM

PAGE 1

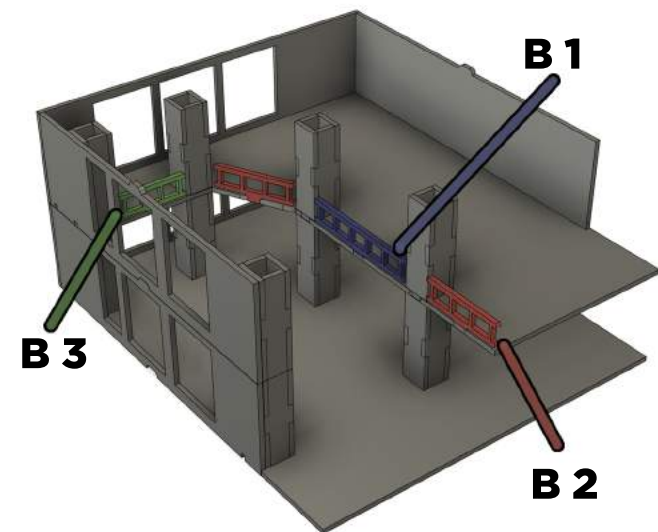
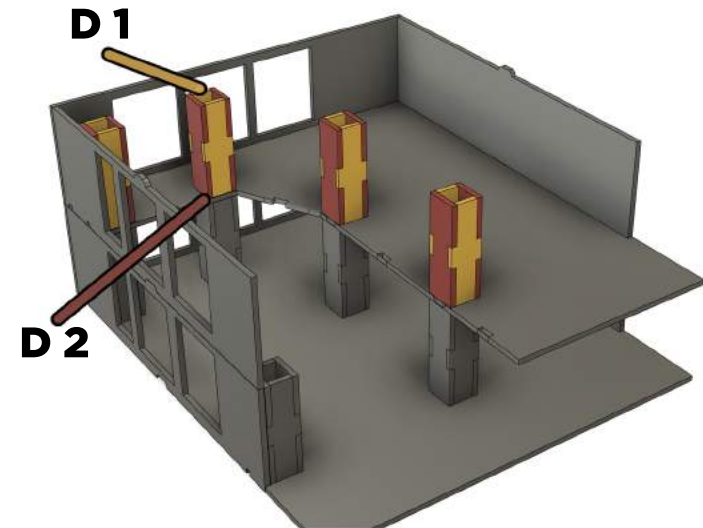
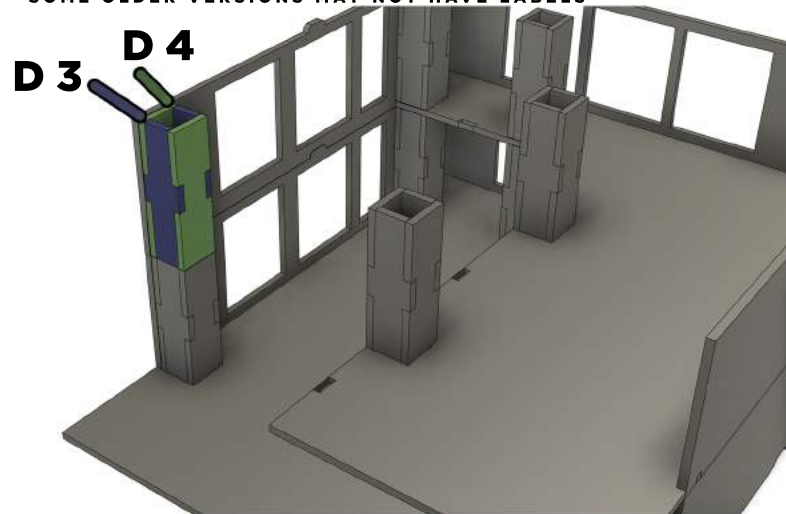


NORTHWOODS MALL - ATRIUM

PAGE 2

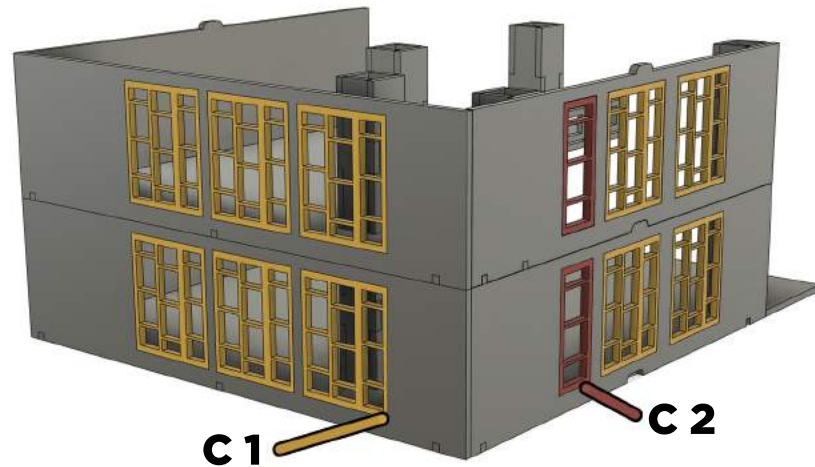


FLOATING COLUMNS WILL BE FOUND ON THE END OF SHEET D2.
SOME OLDER VERSIONS MAY NOT HAVE LABELS

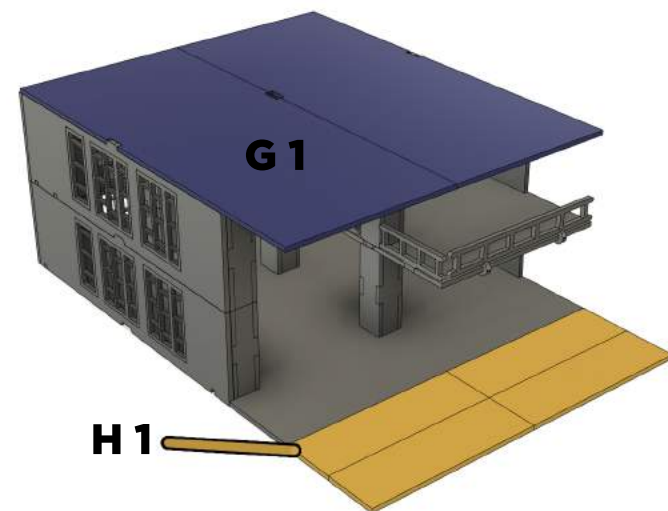
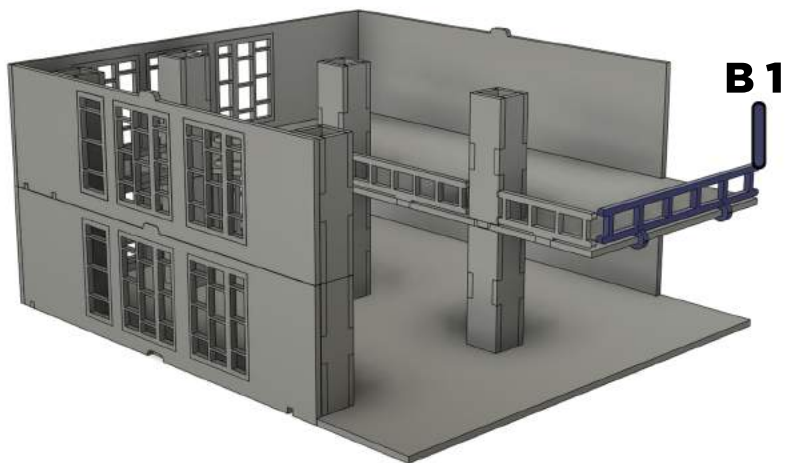
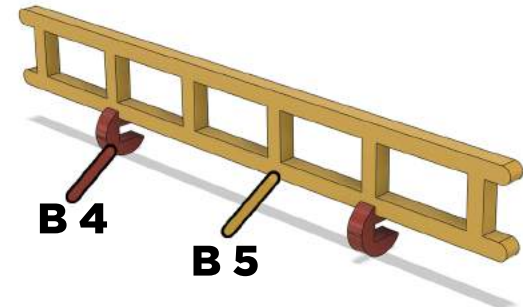


NORTHWOODS MALL - ATRIUM

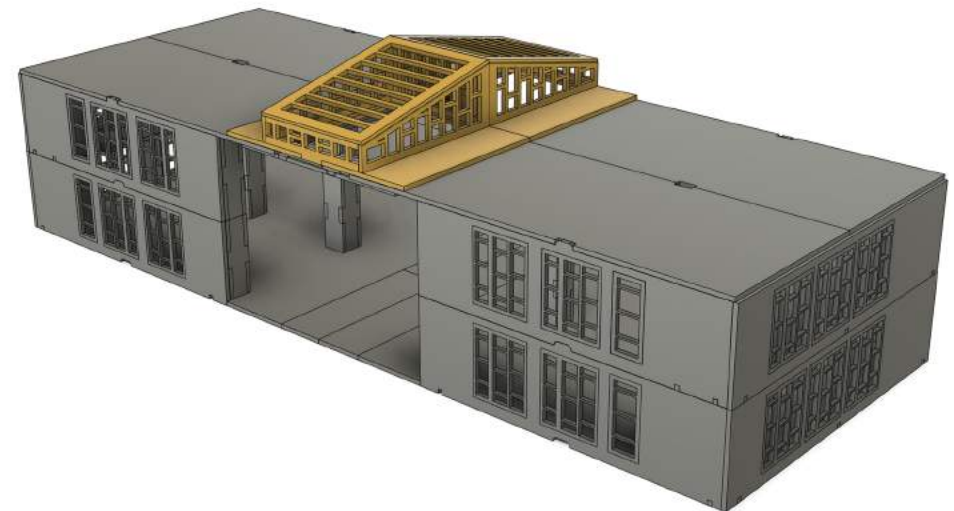
PAGE 3



PARTS WILL BE FOUND ON SHEET B.
OLDER VERSION MAY NOT HAVE LABELS

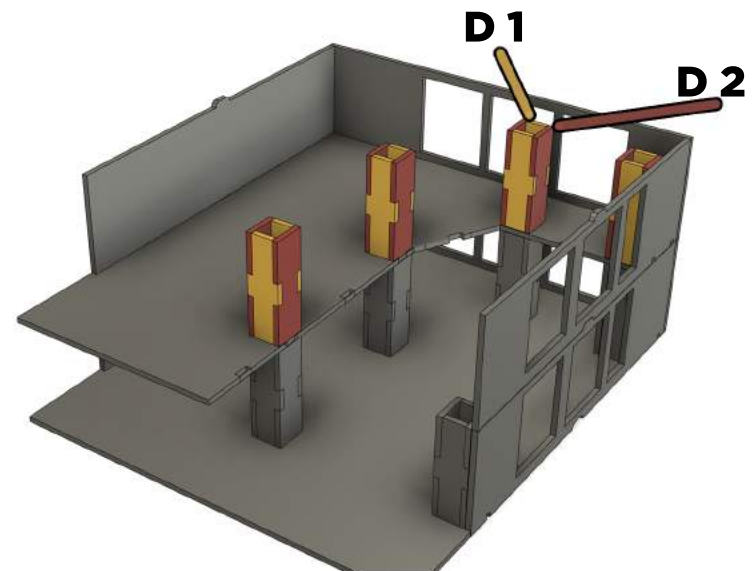
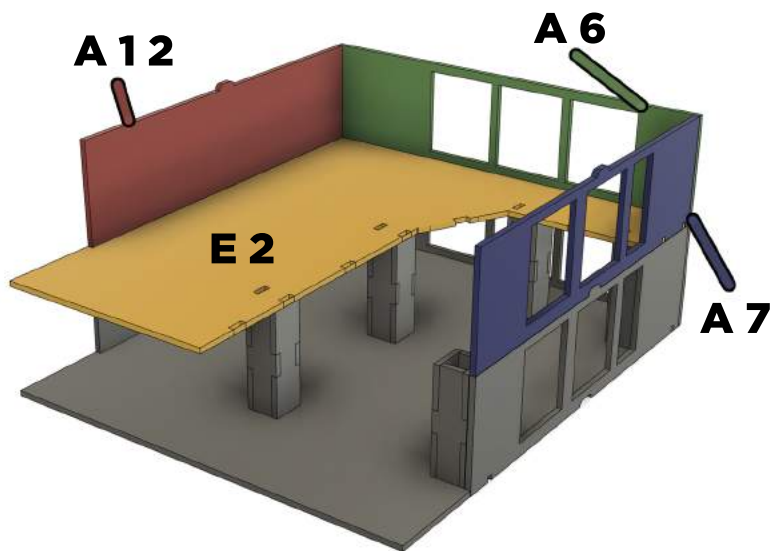
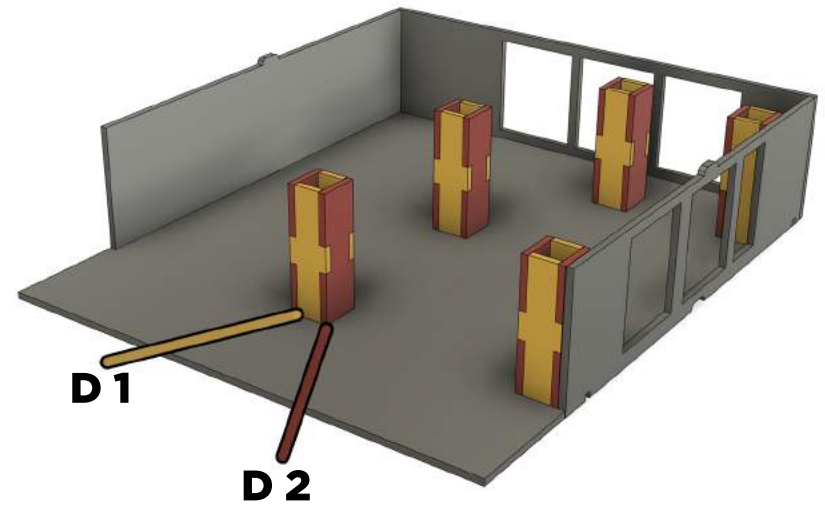
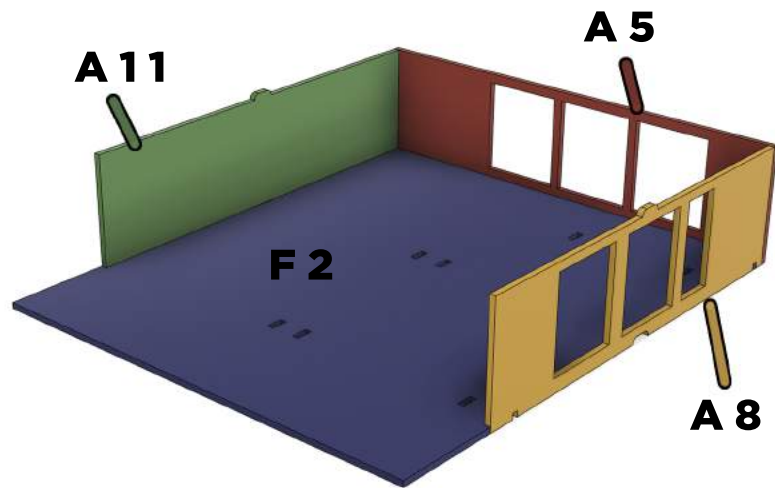


PAGE 4



NORTHWOODS MALL - ATRIUM

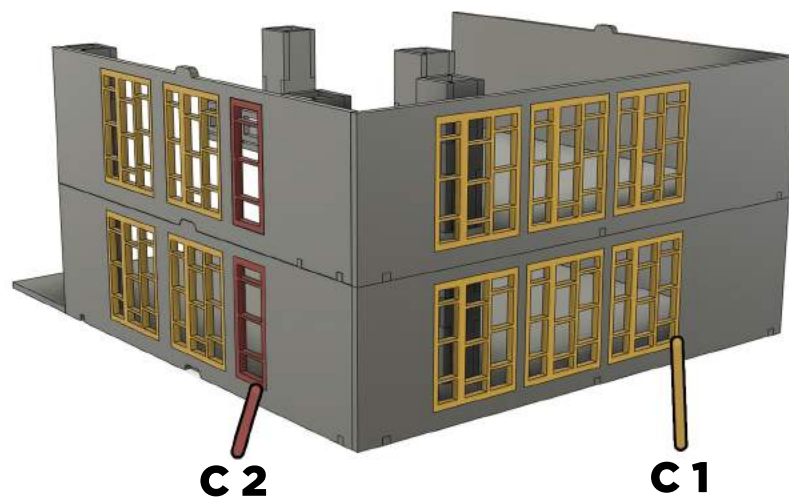
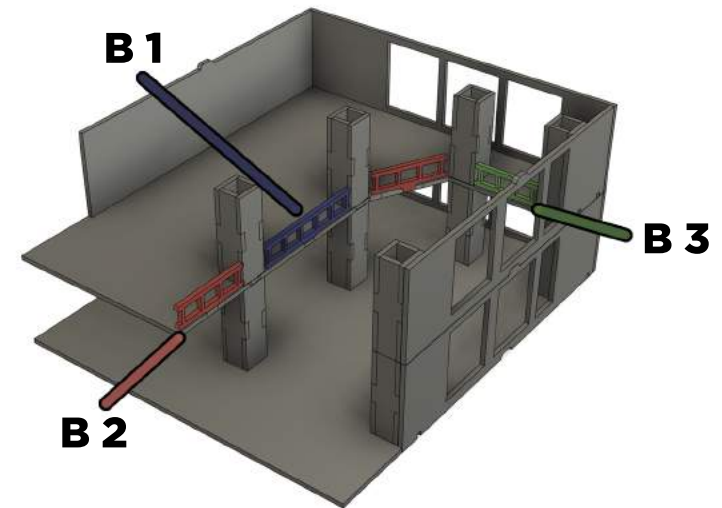
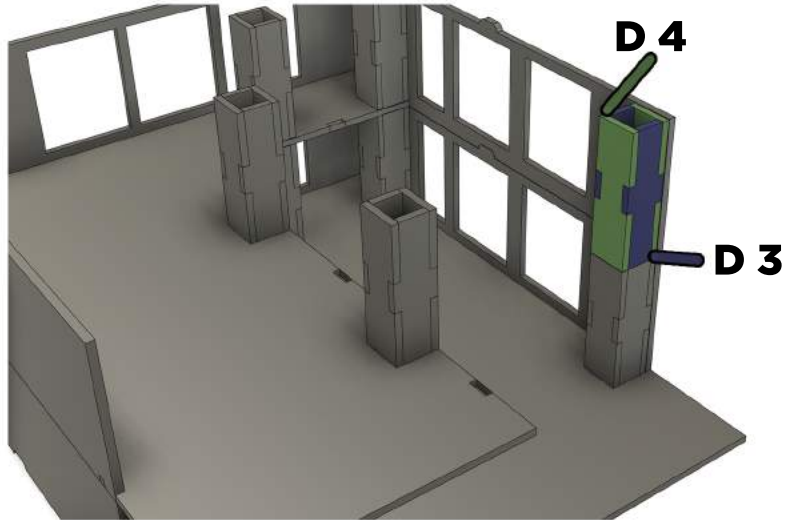
PAGE 5



NORTHWOODS MALL - ATRIUM

PAGE 6

FIND THESE PARTS ON THE END OF SHEET D2.
OLDER VERSIONS MAY NOT HAVE LABELS



FIND THESE PARTS ON
THE END OF SHEET B.
OLDER VERSIONS MAY
NOT BE LABELED

