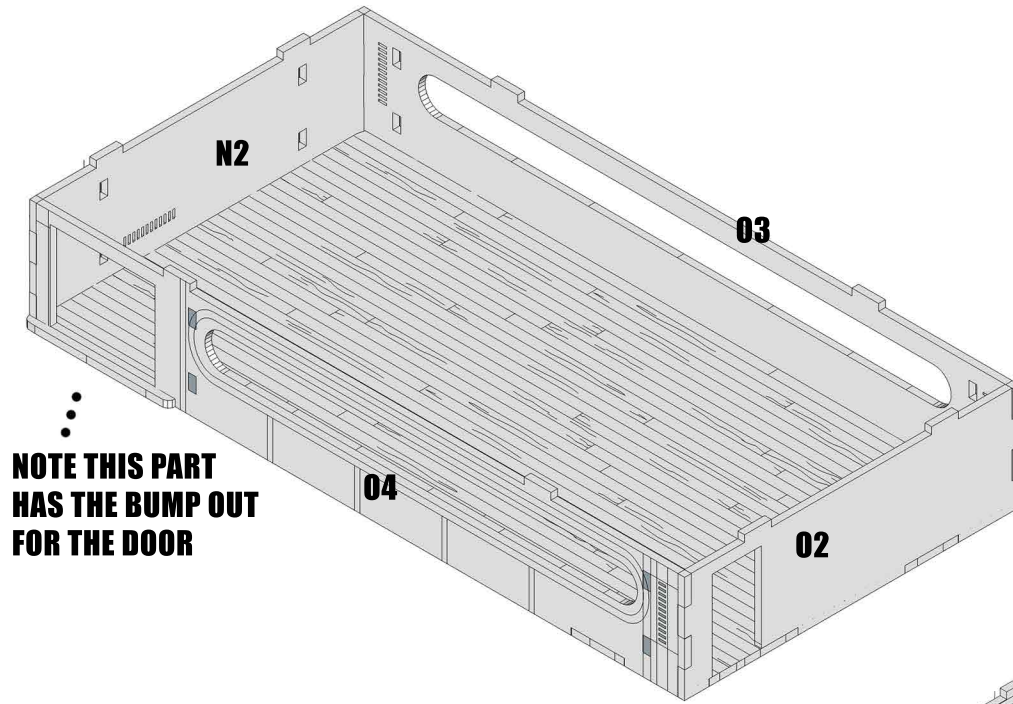
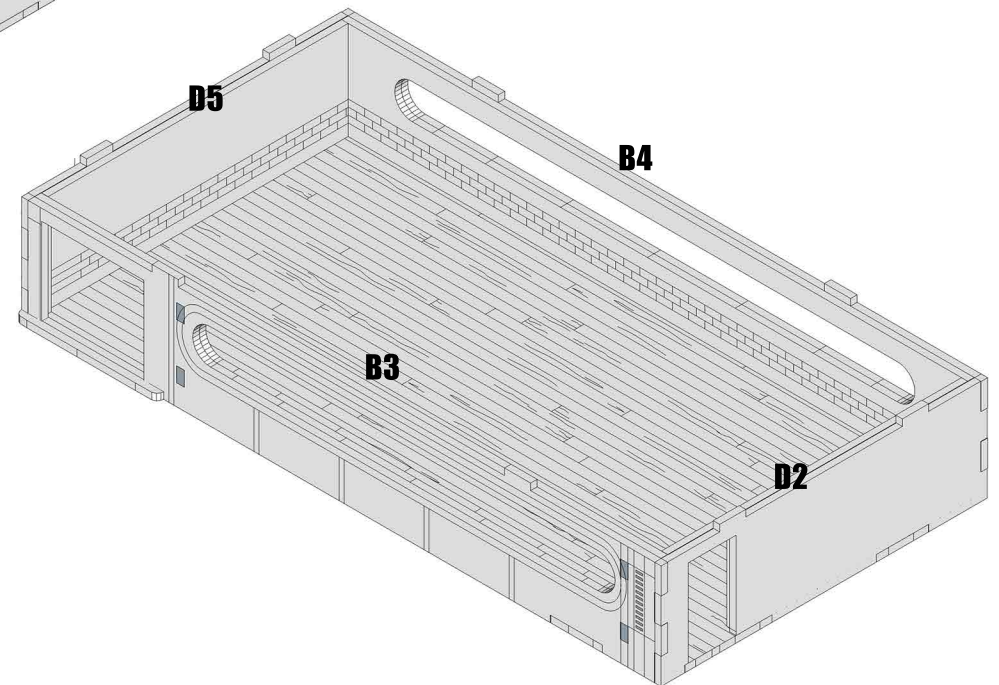




DL INC.

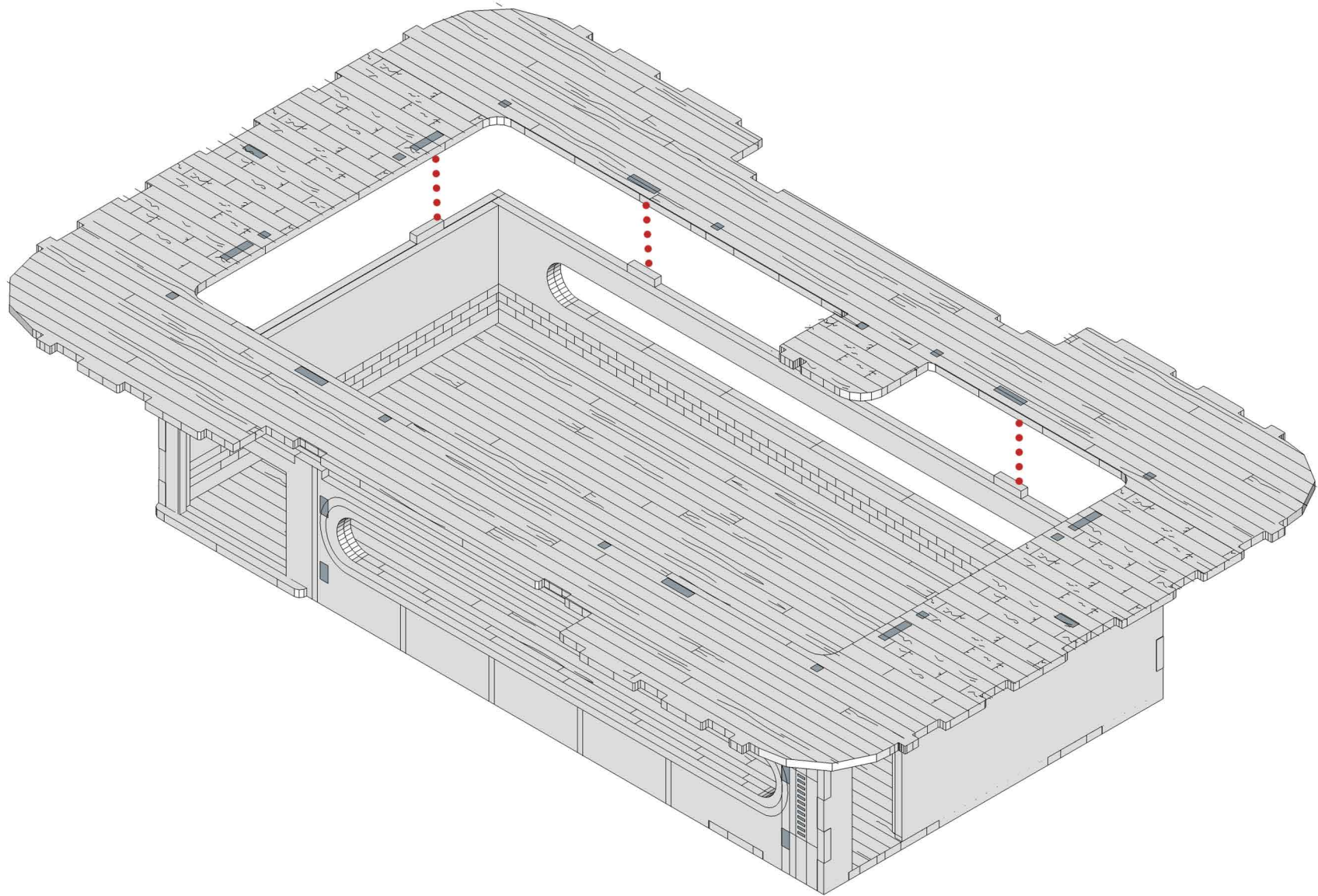


⋮
**NOTE THIS PART
HAS THE BUMP OUT
FOR THE DOOR**





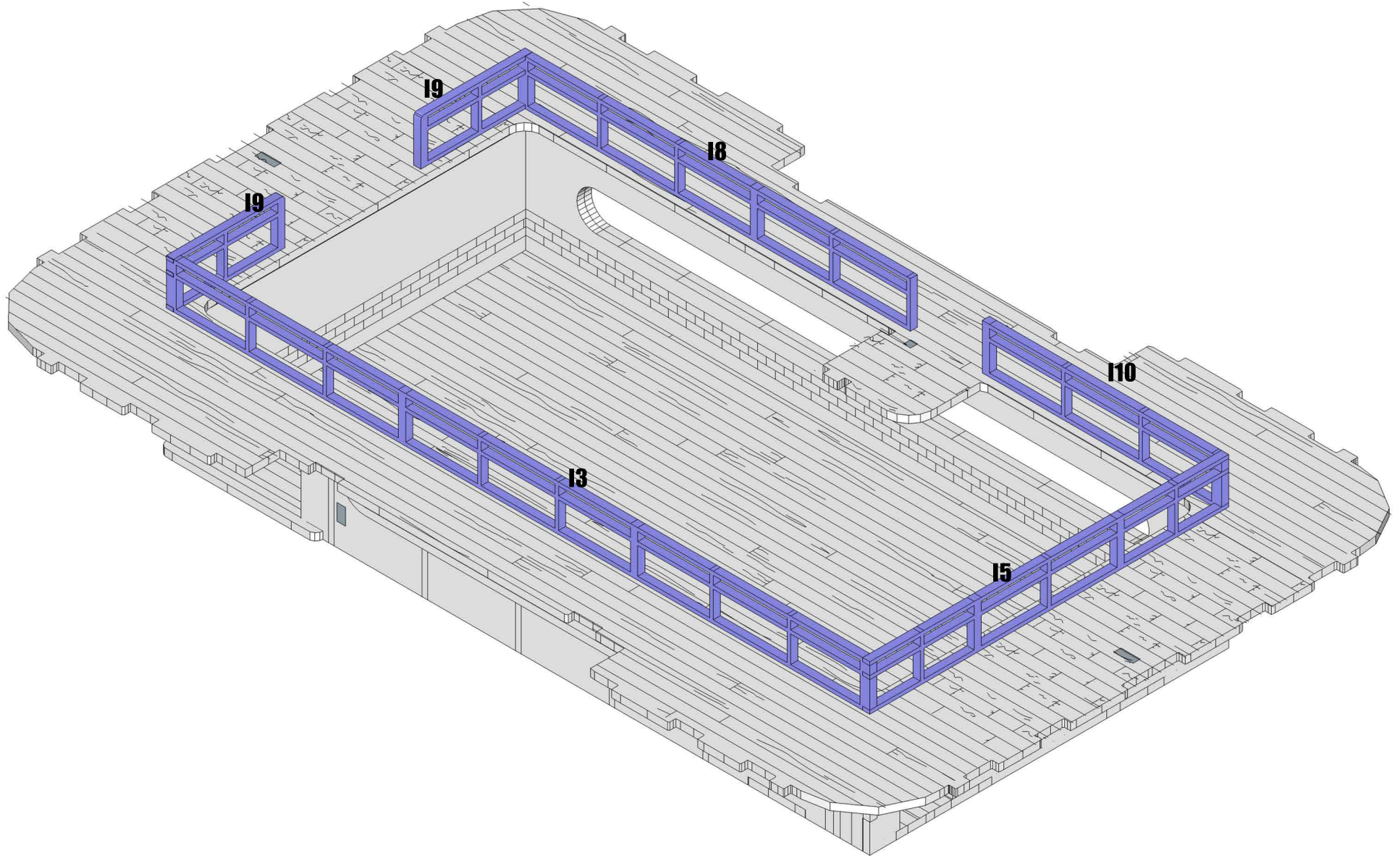
DL INC.



WWW.BLACKSITESTUDIO.COM

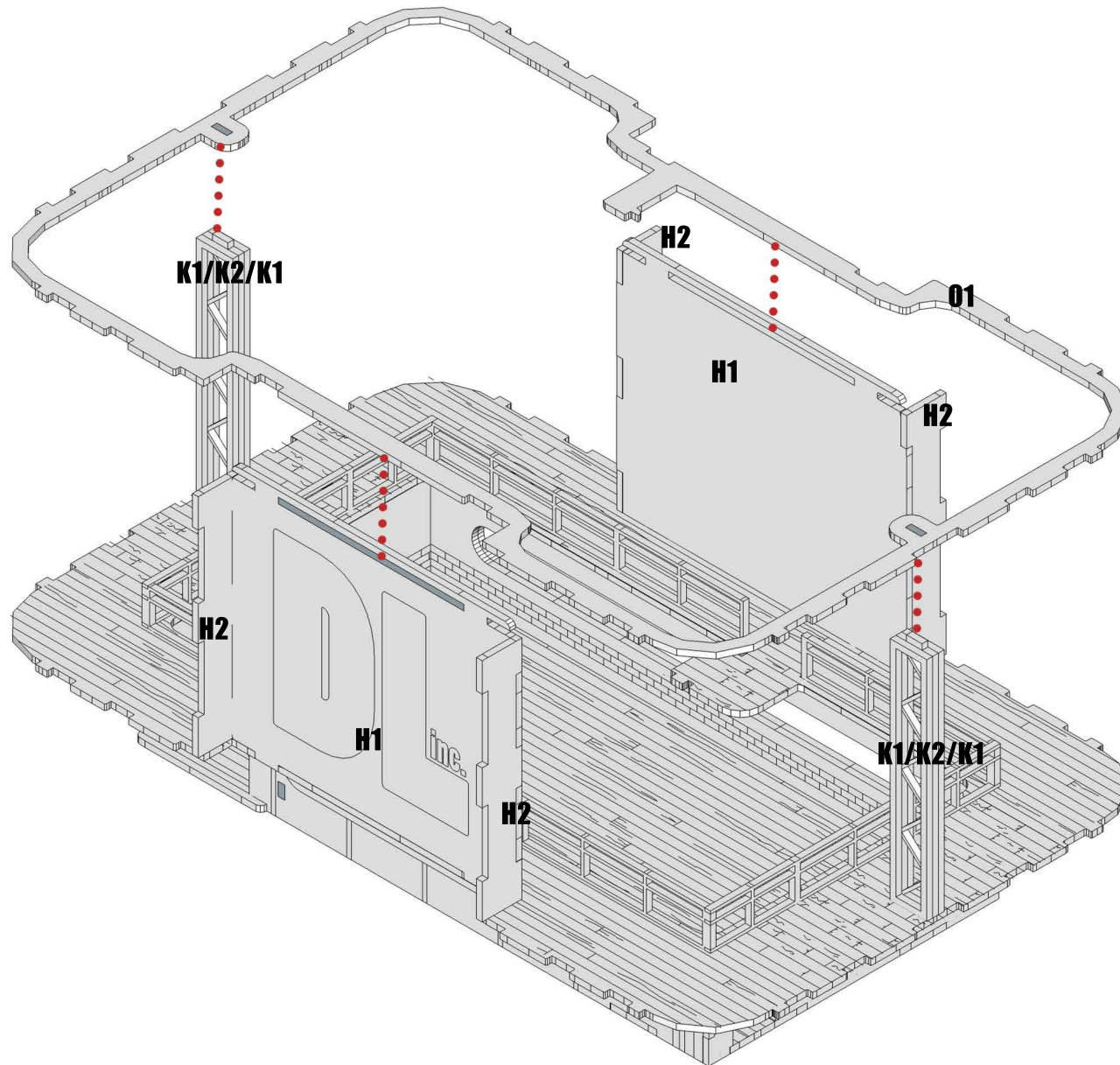


DL INC.



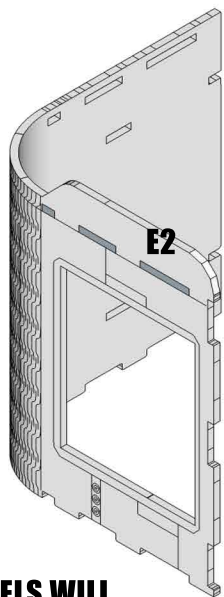


DL INC.



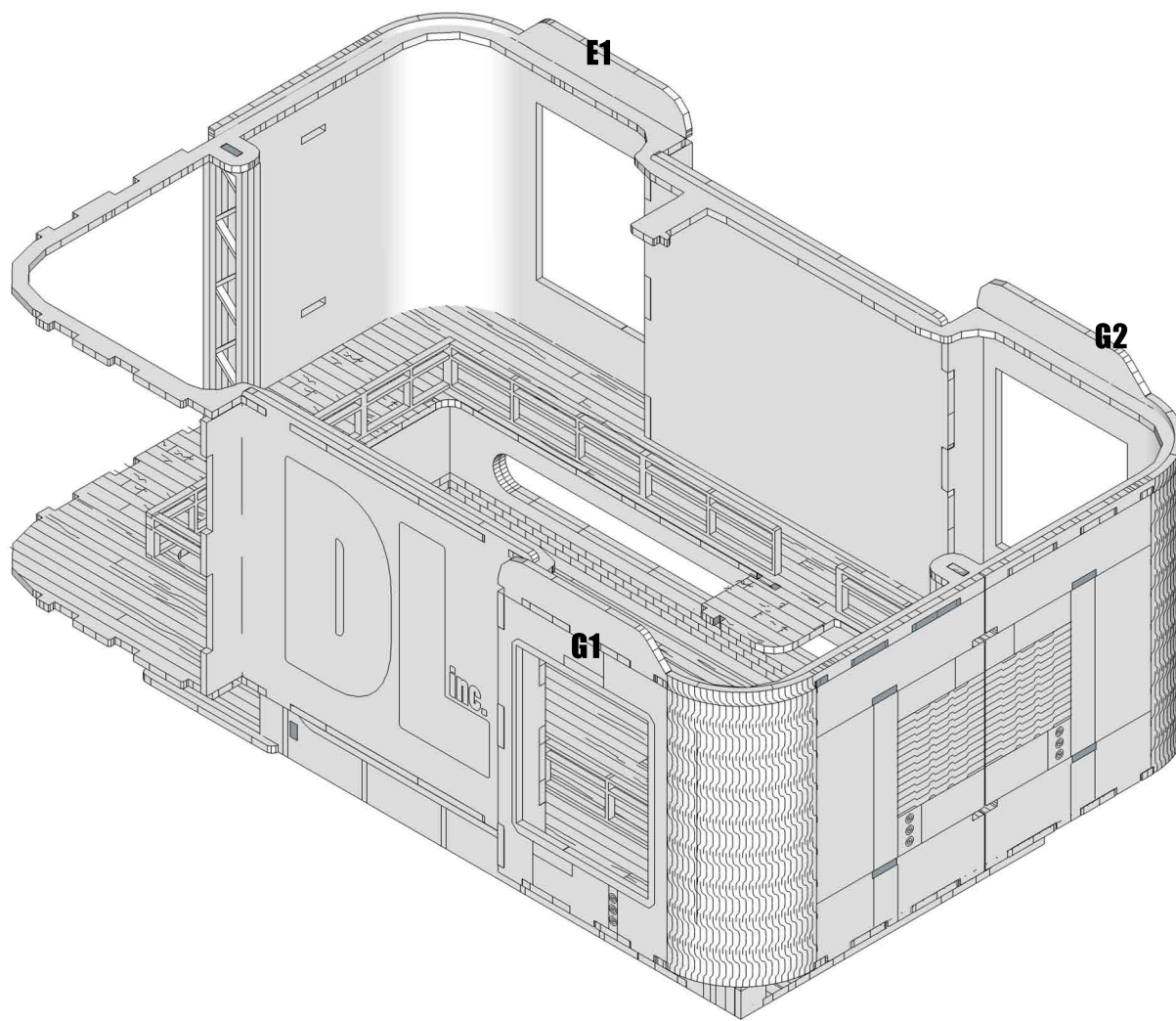


DL INC.



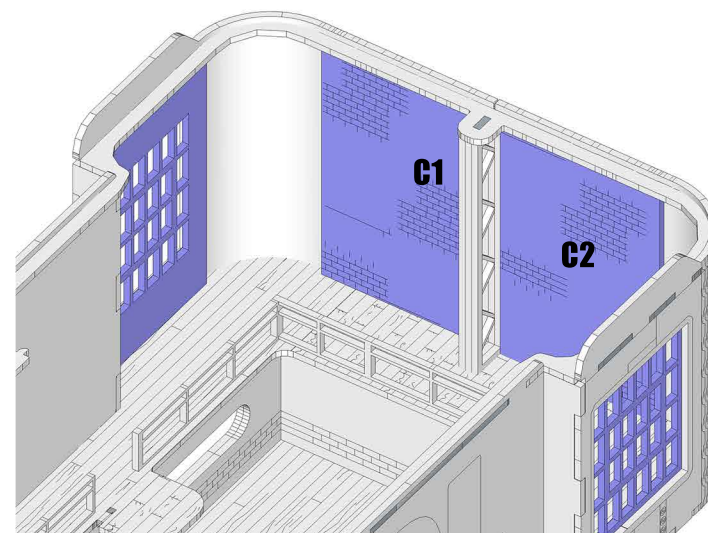
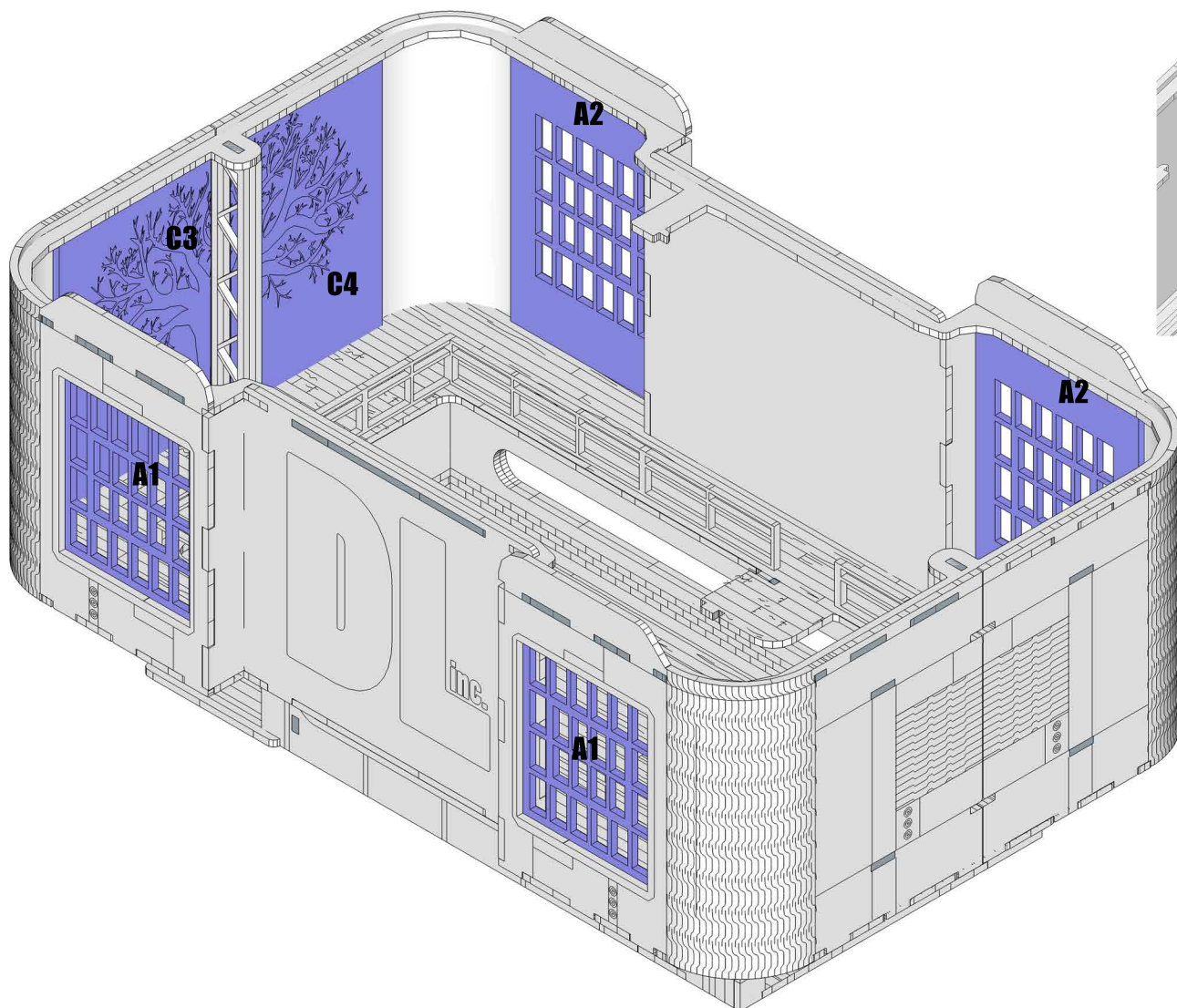
THE SIDE PANELS WILL BEND. BE VERY CAUTIOUS NOT TO OVERBEND OR STRESS THE PART. WE HAVE ALSO DESIGNED IT WITH A LITTLE EXTRA ROOM, SO THERE WILL BE A SMALL GAP BETWEEN THE CURVE AND THE FLOOR.

TAKE YOUR TIME TO FIT THESE.





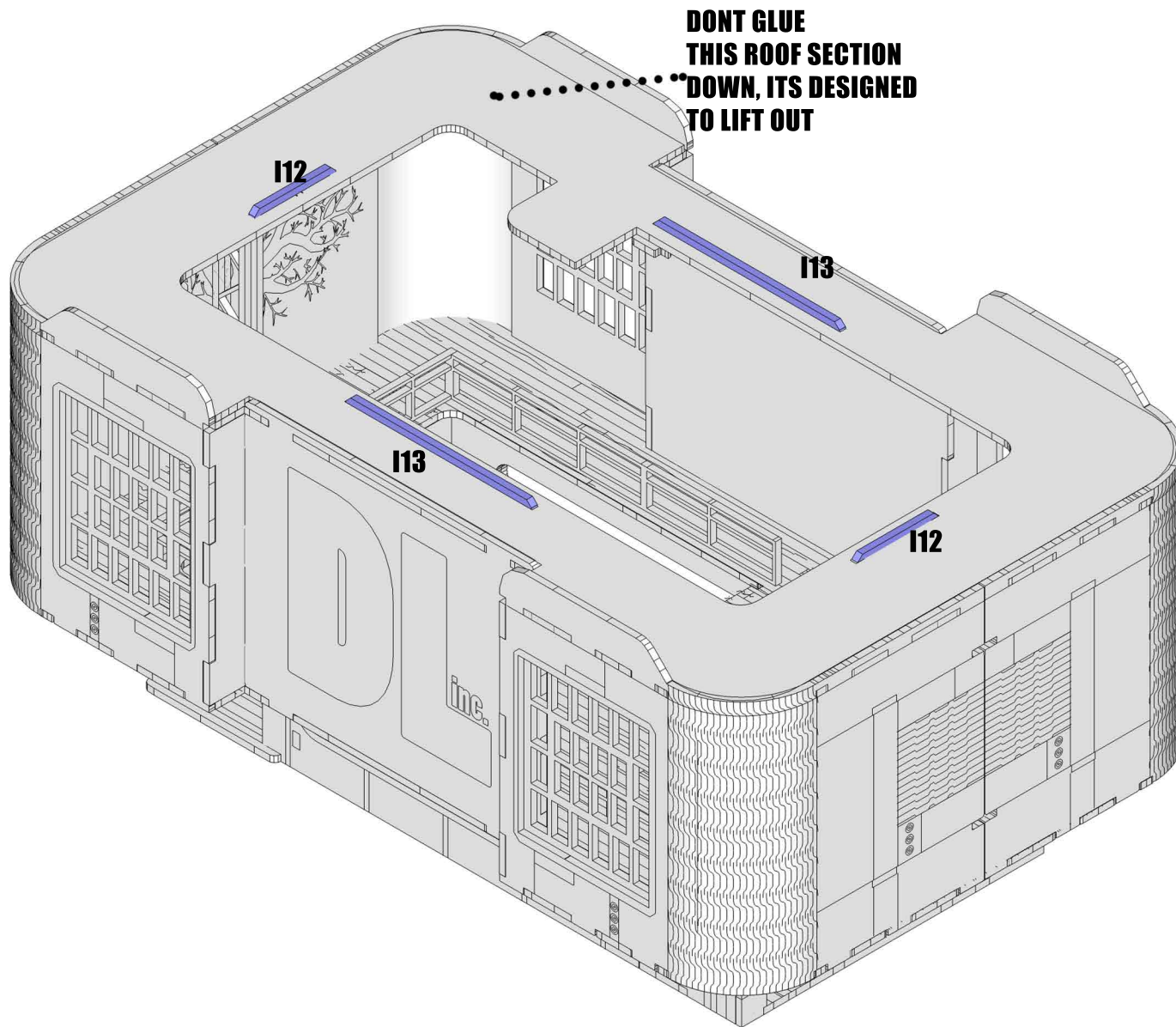
DL INC.



REVERSE VIEW



DL INC.



**DONT GLUE
THIS ROOF SECTION
DOWN, ITS DESIGNED
TO LIFT OUT**

I12

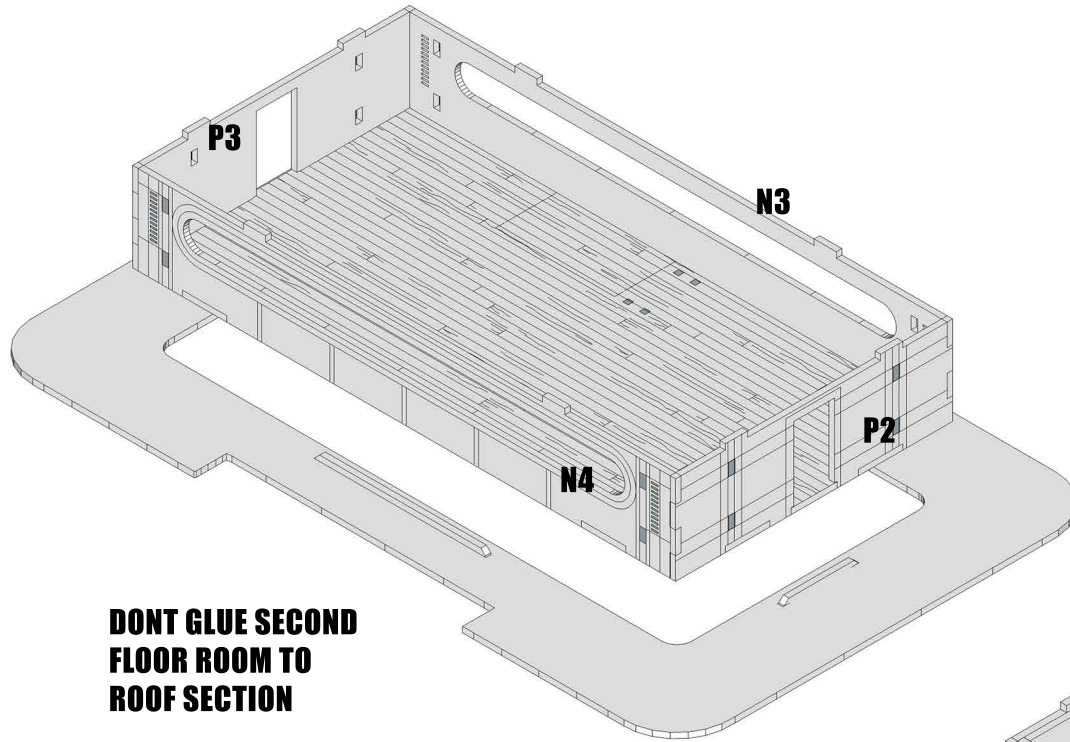
I13

I13

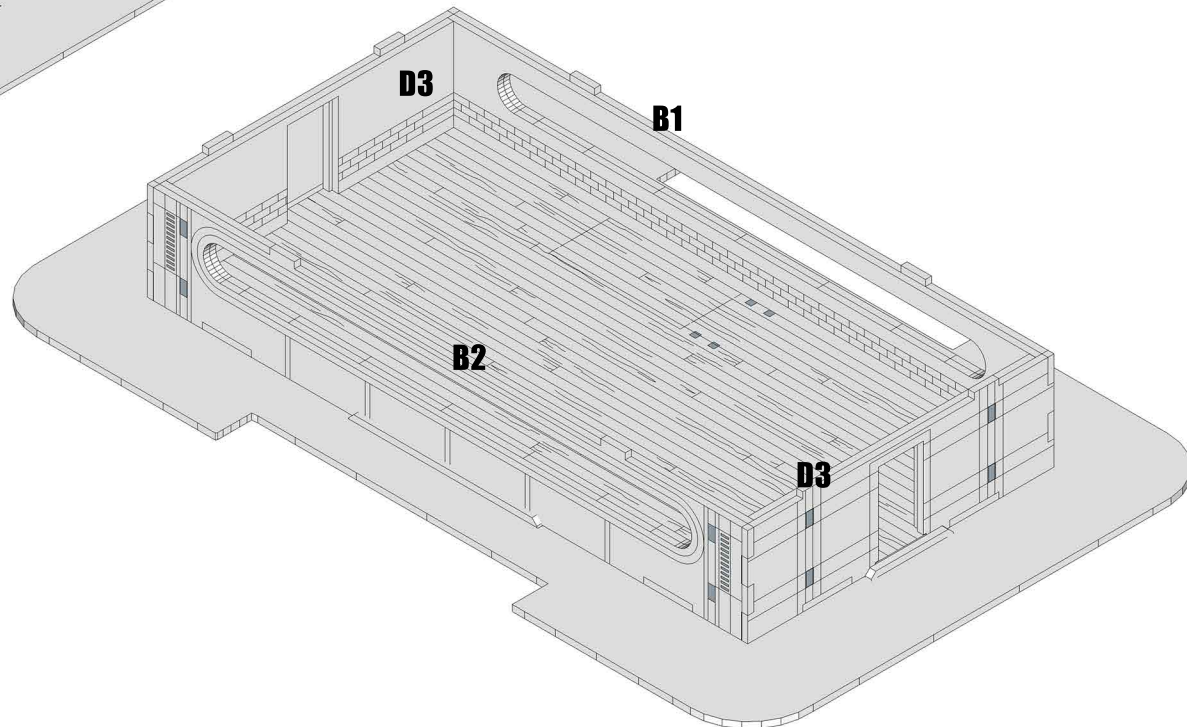
I12



DL INC.

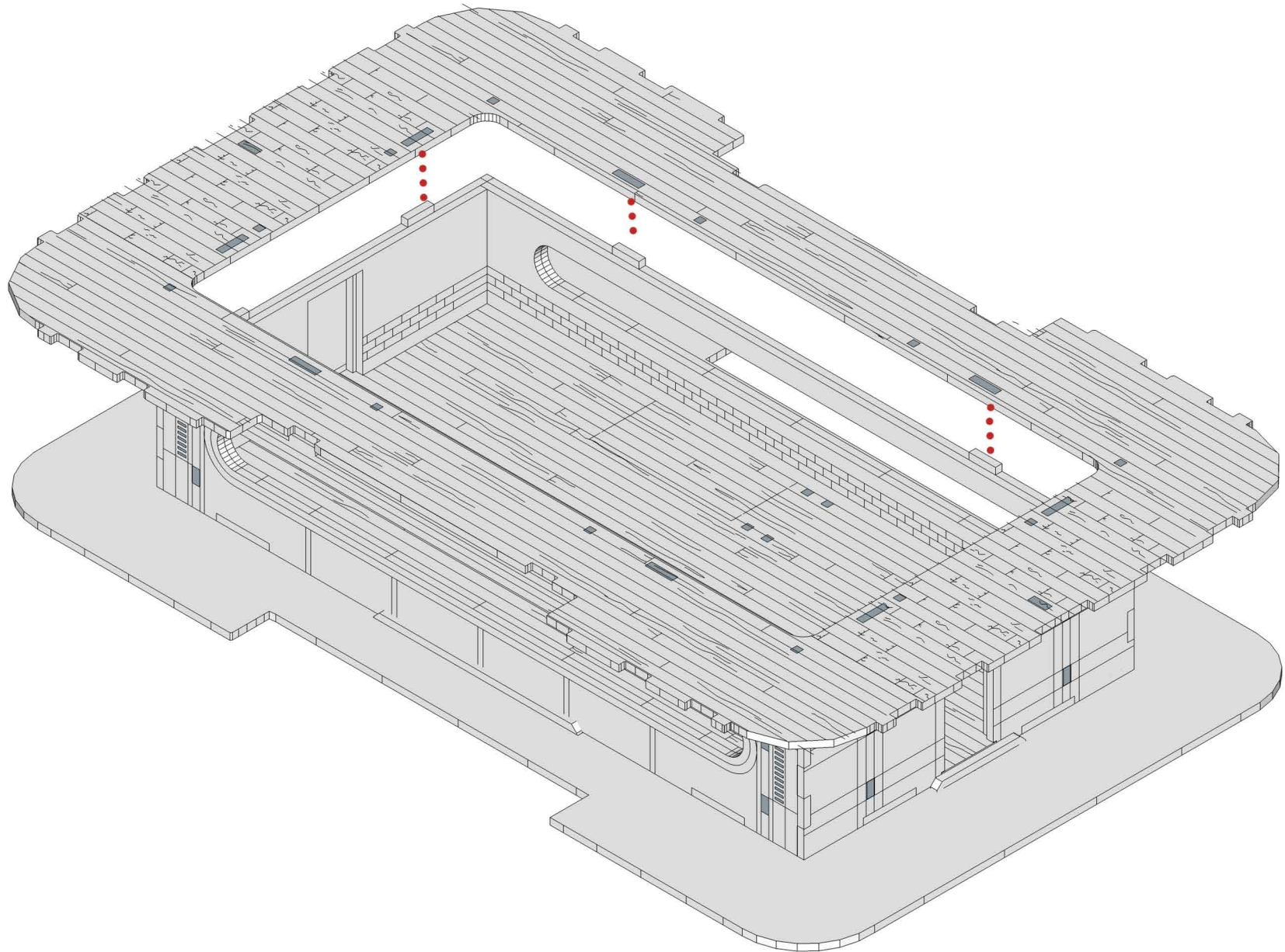


**DONT GLUE SECOND
FLOOR ROOM TO
ROOF SECTION**





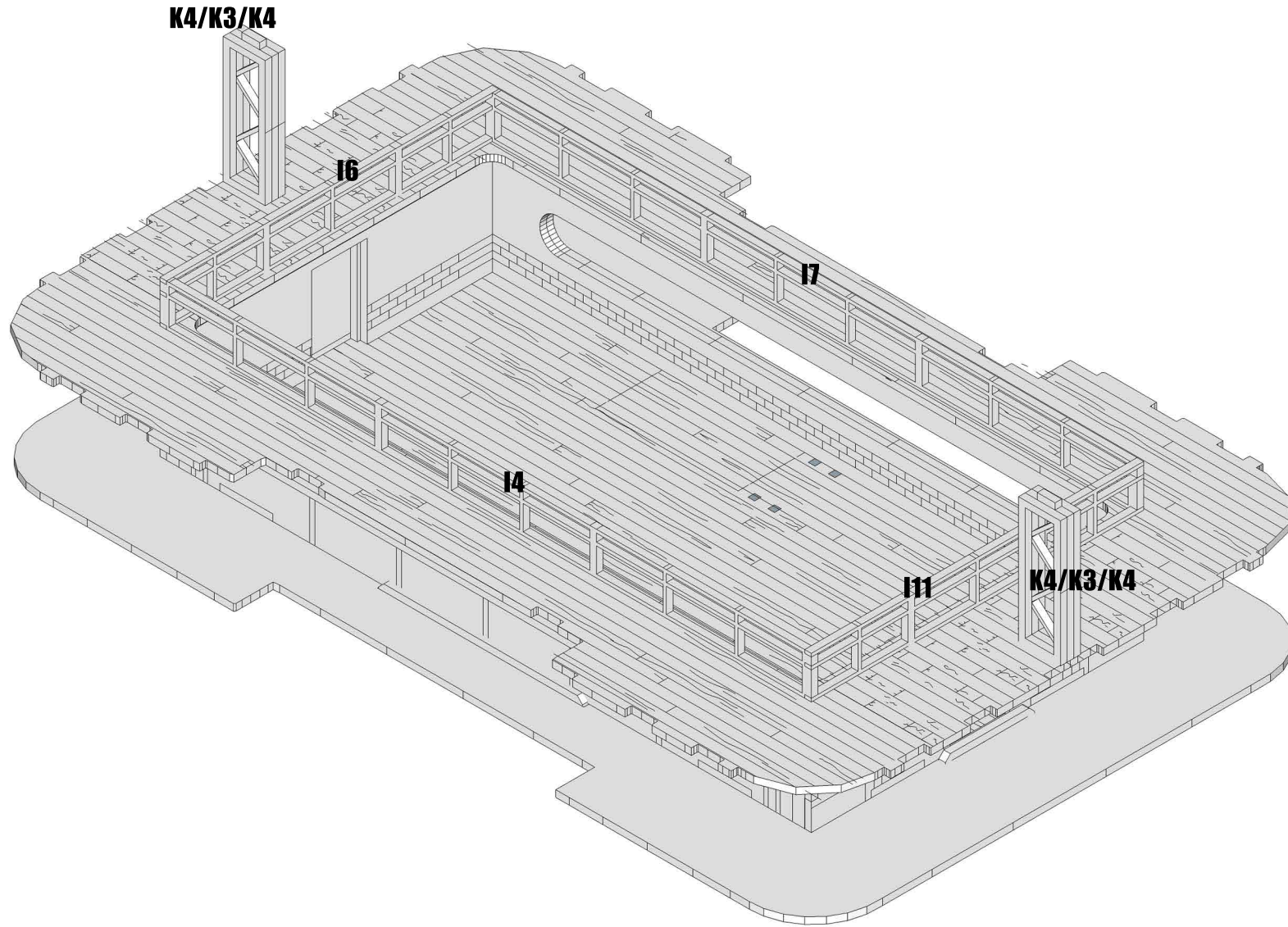
DL INC.



WWW.BLACKSITESTUDIO.COM

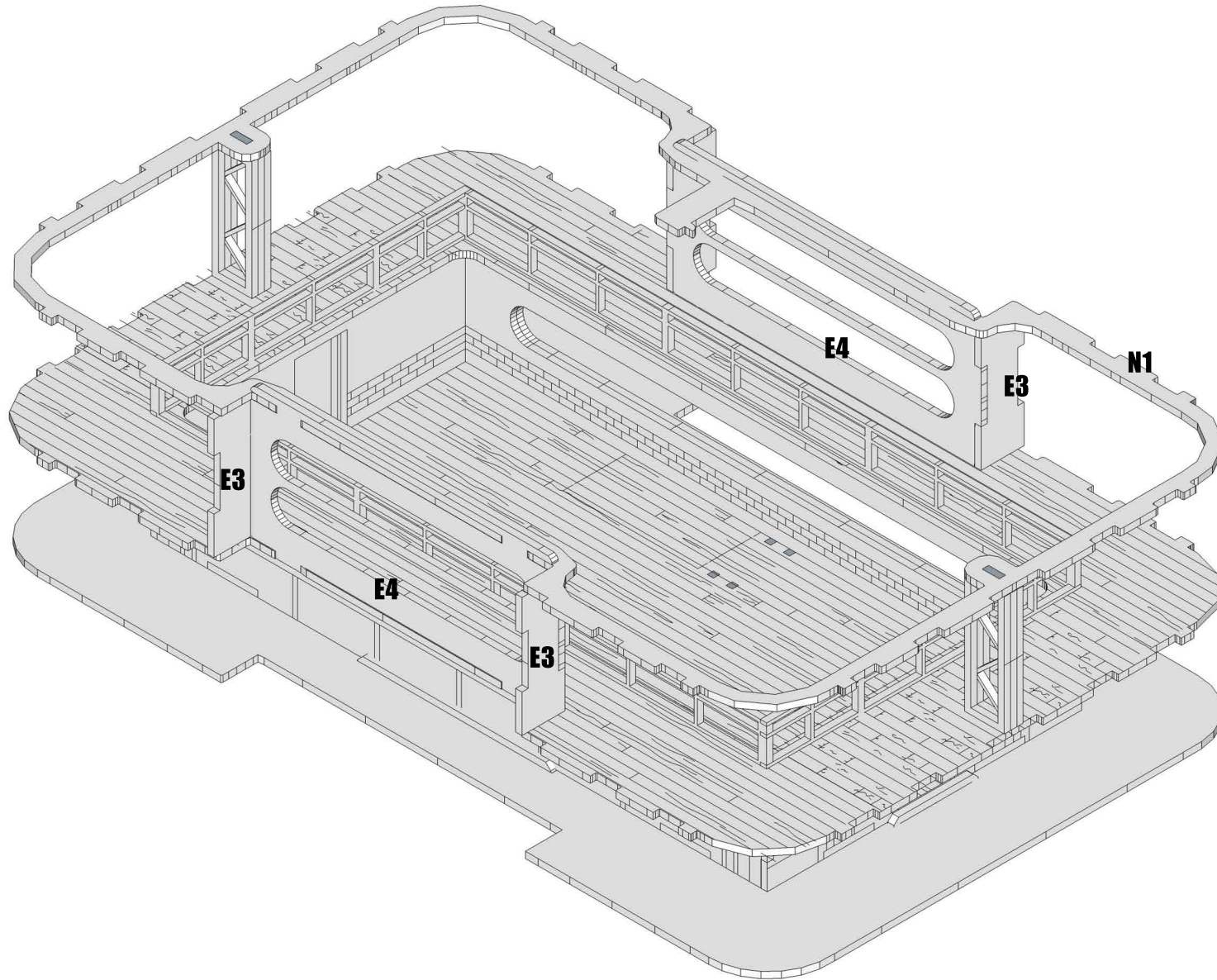


DL INC.



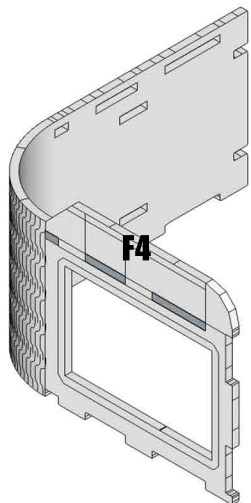


DL INC.

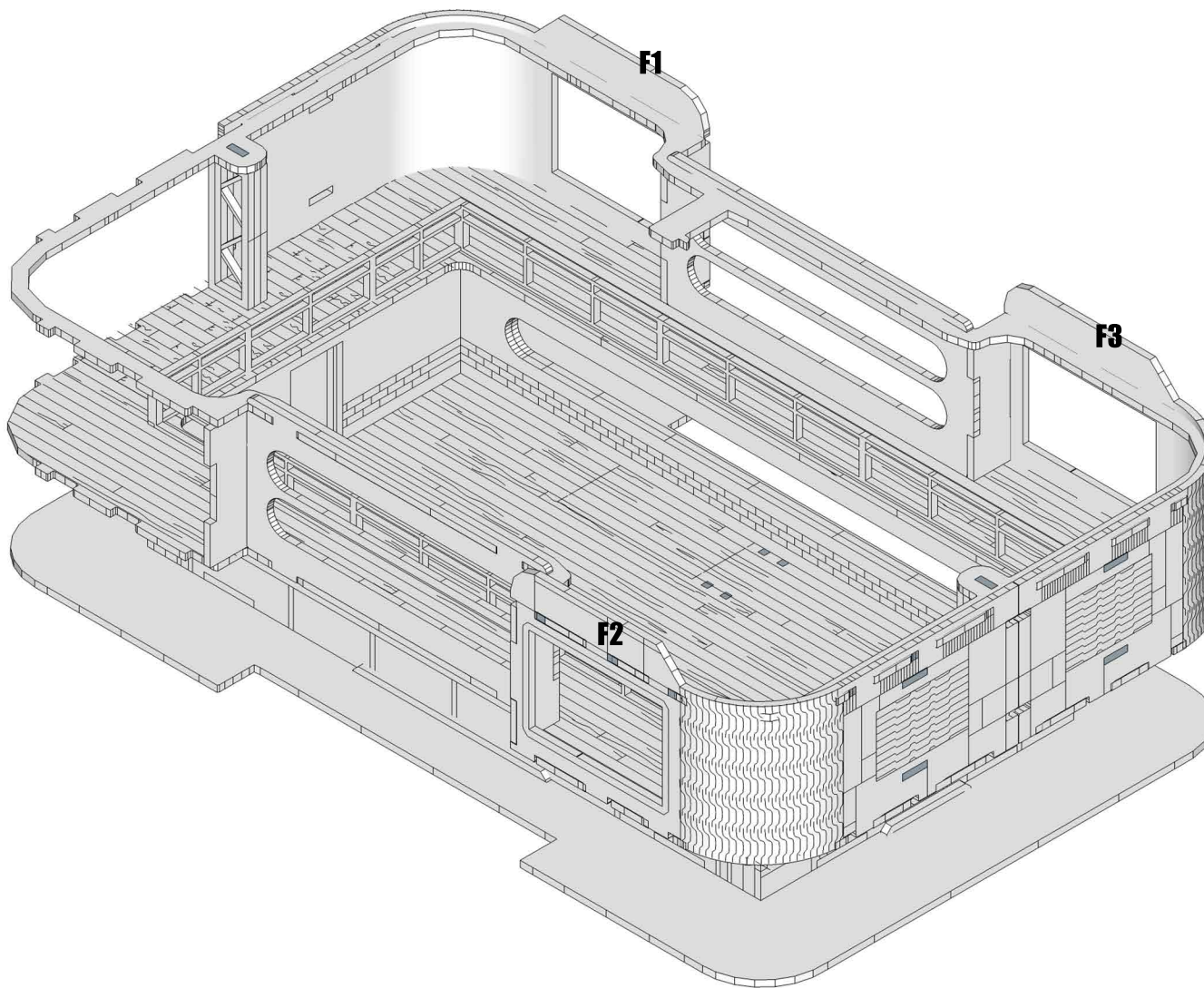




DL INC.

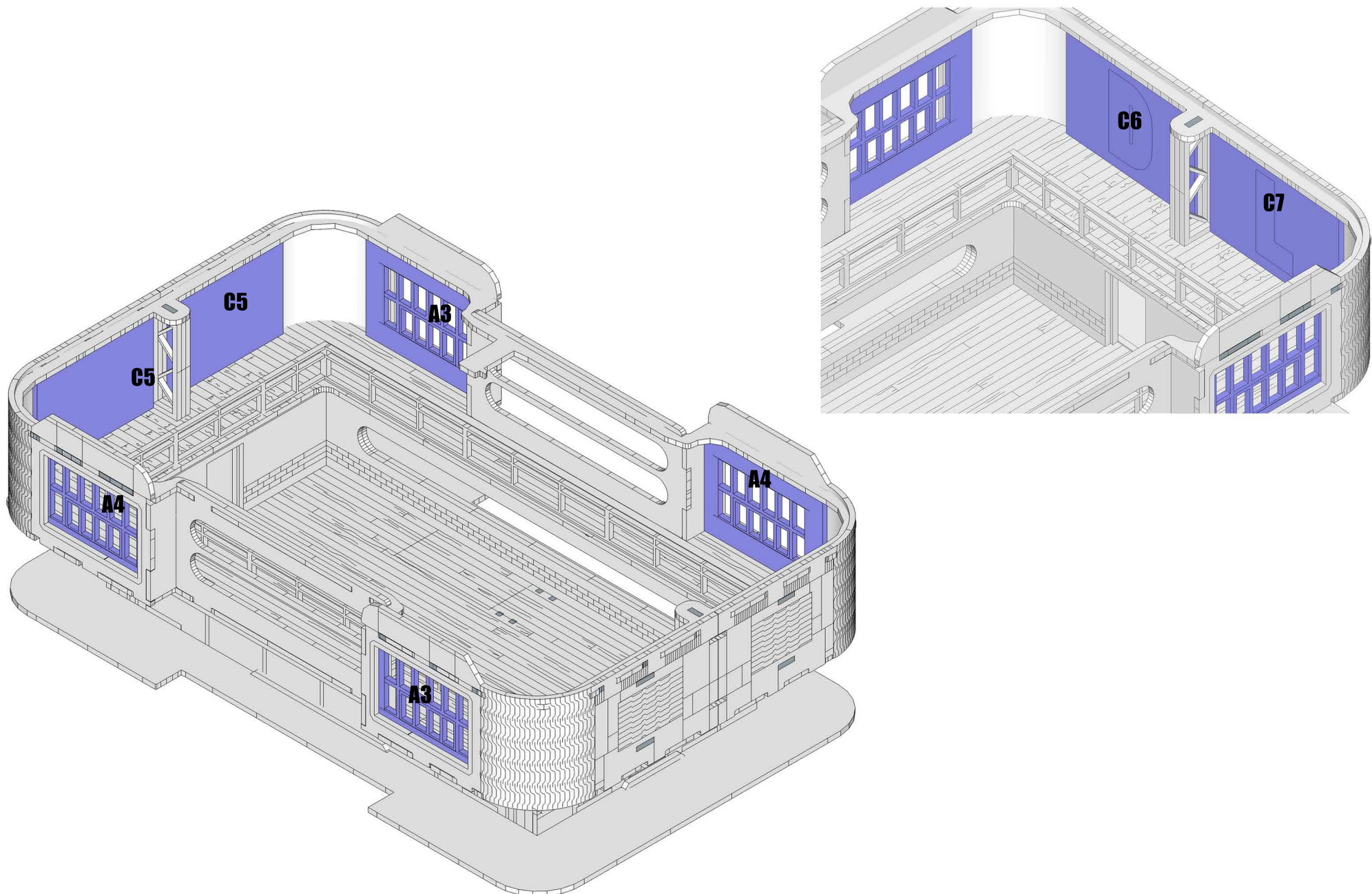


**FOLLOW SAME PROCESS
AS PREVIOUS CURVED
CORNER PANELS.**



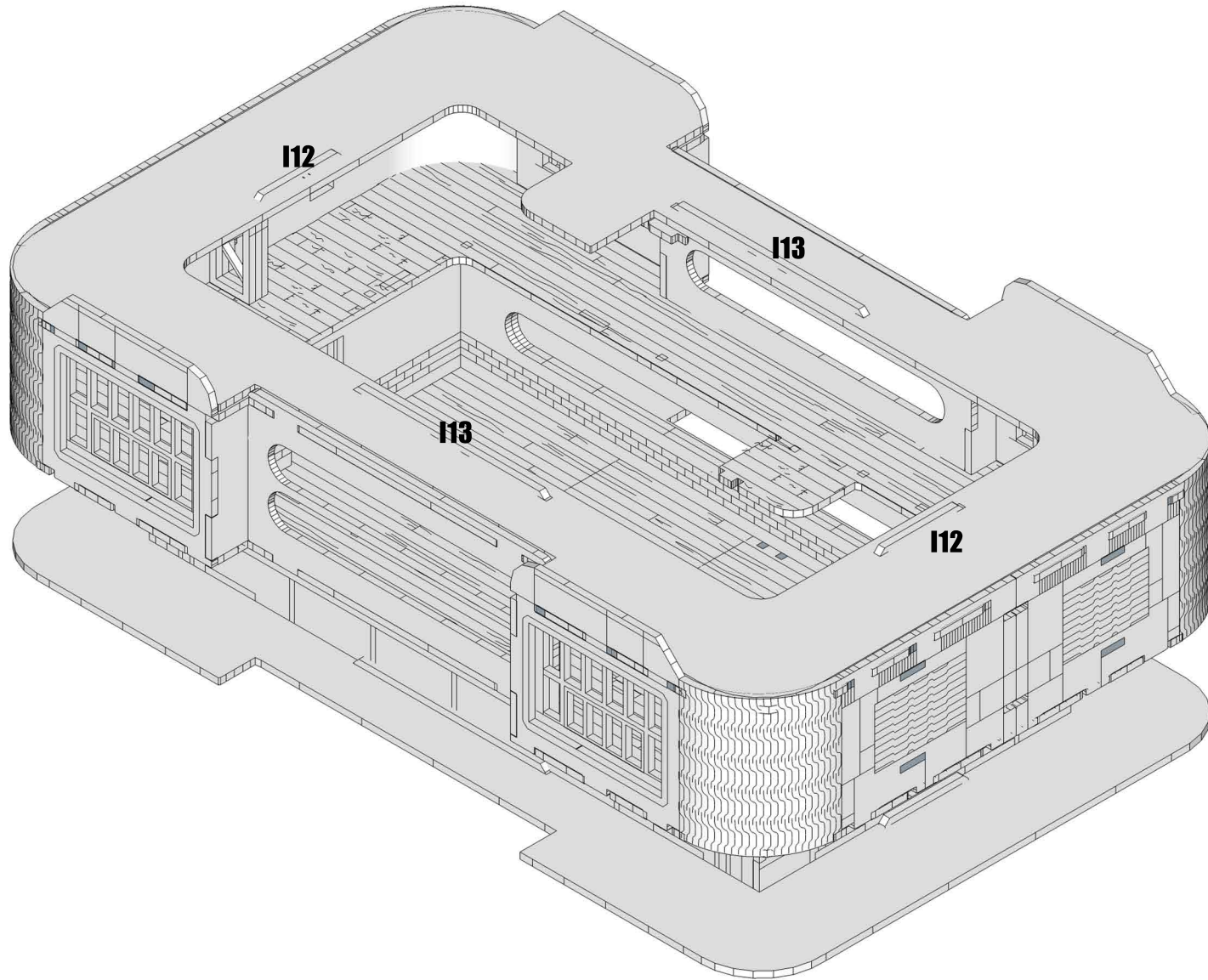


DL INC.





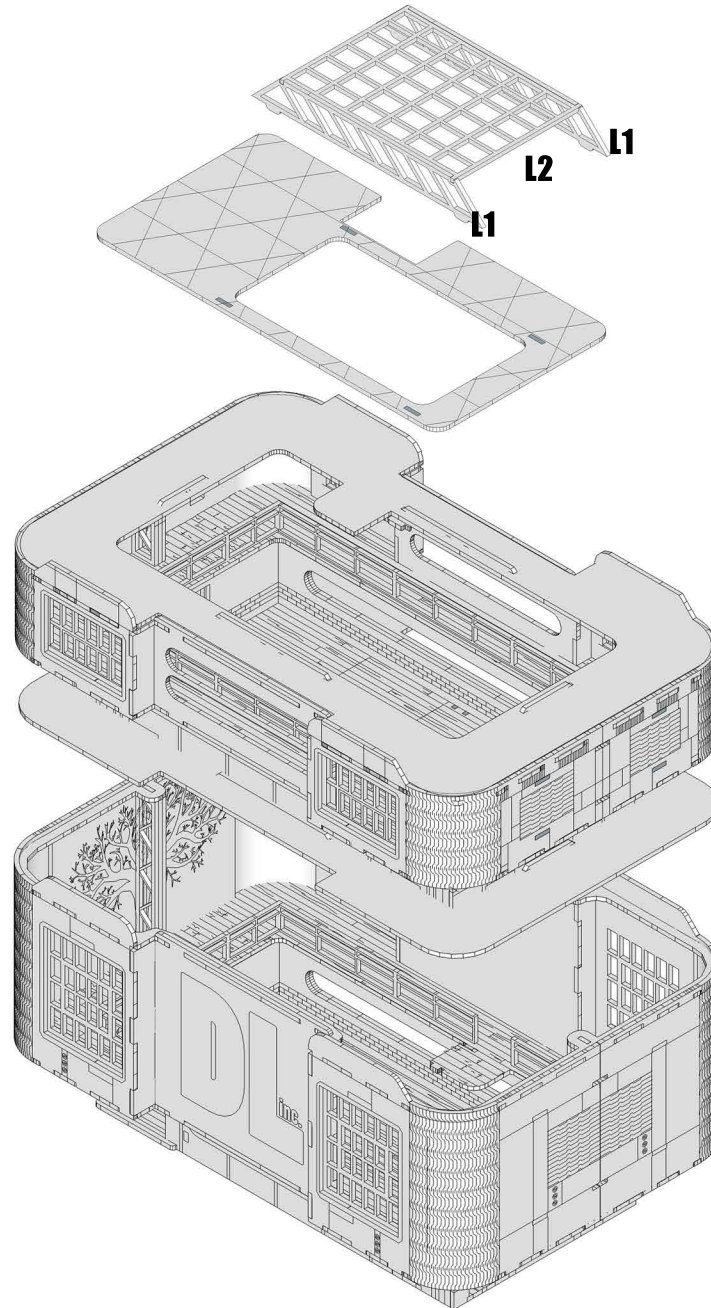
DL INC.



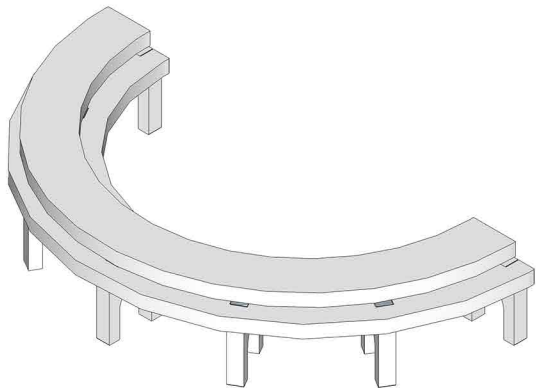
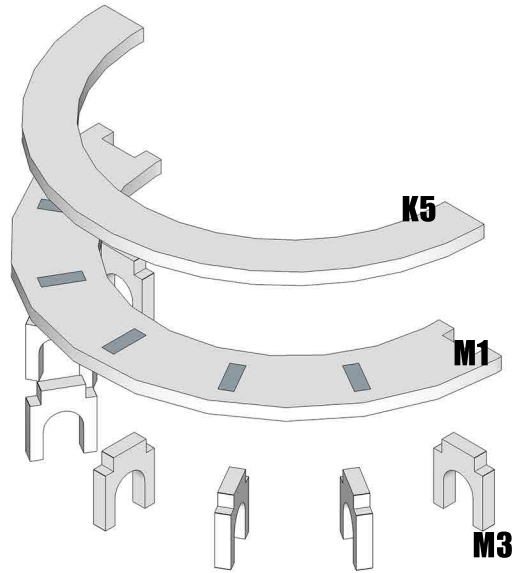
WWW.BLACKSITESTUDIO.COM



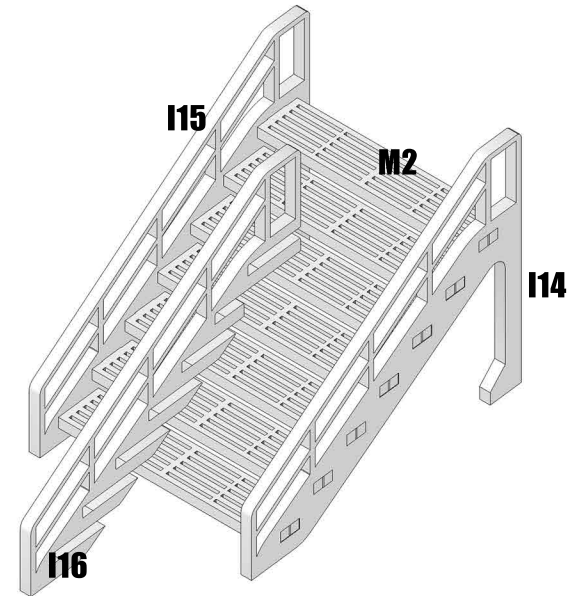
DL INC.



WWW.BLACKSITESTUDIO.COM

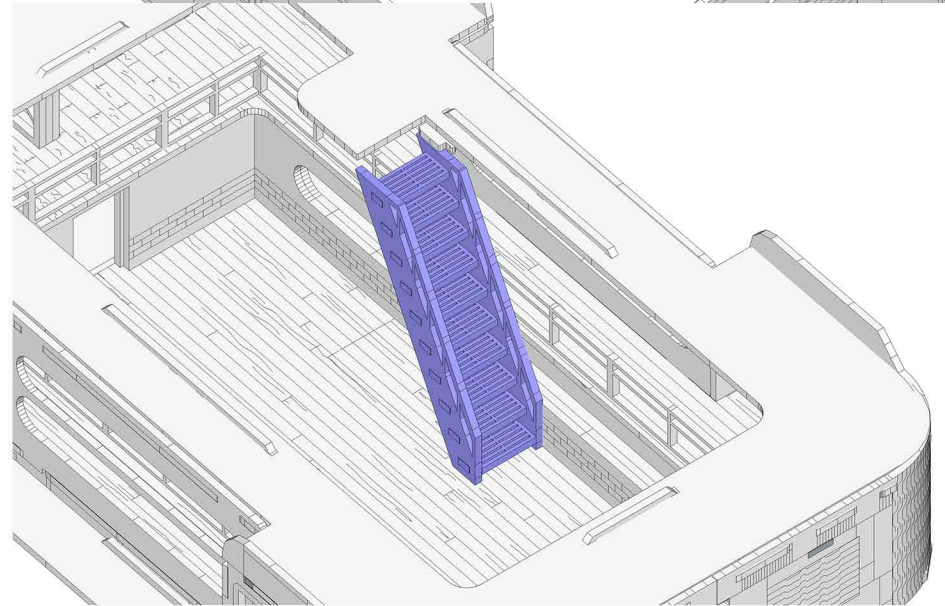
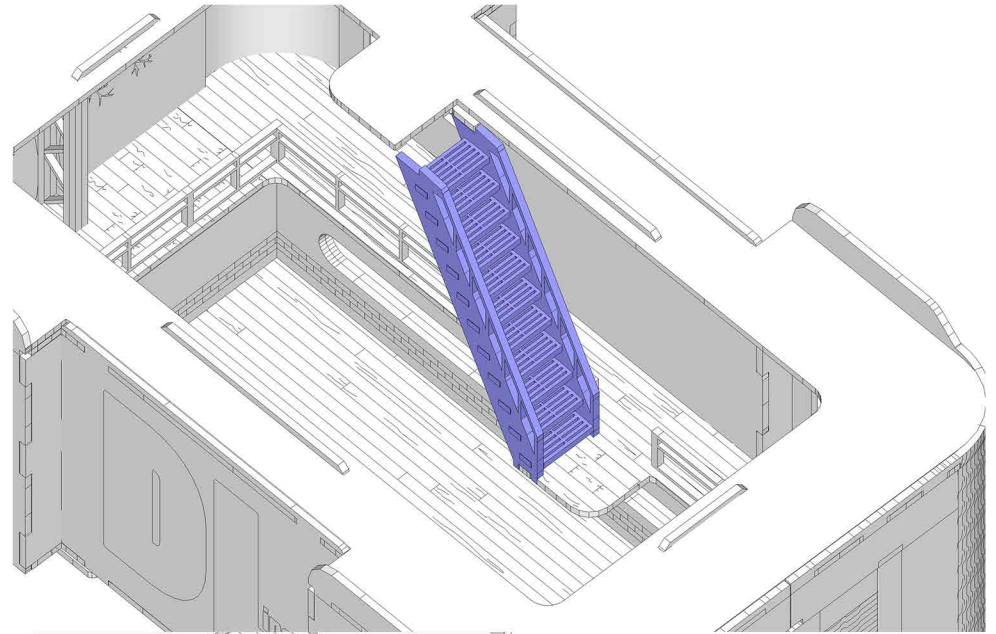
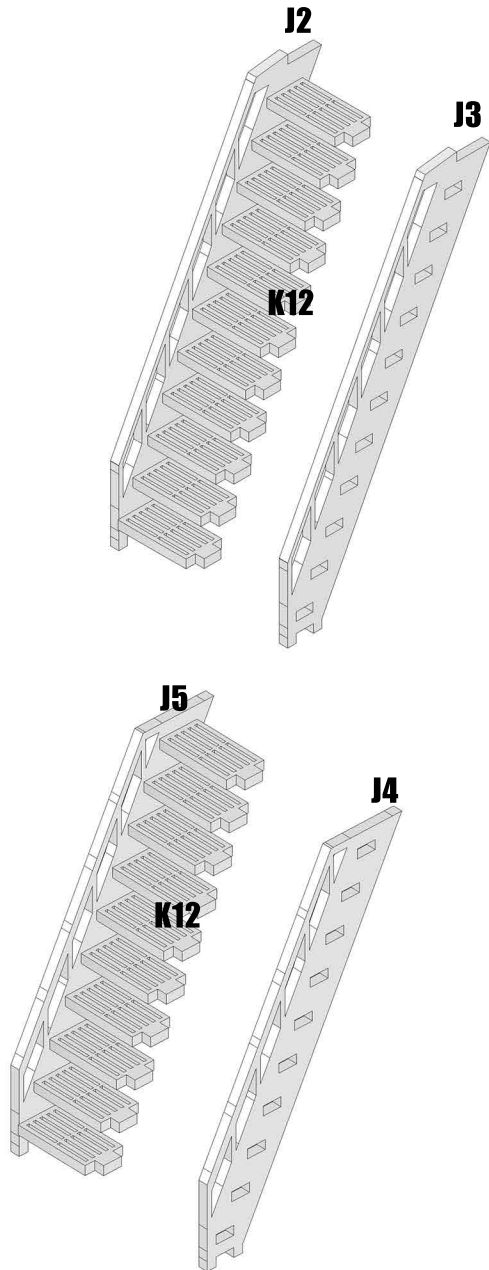


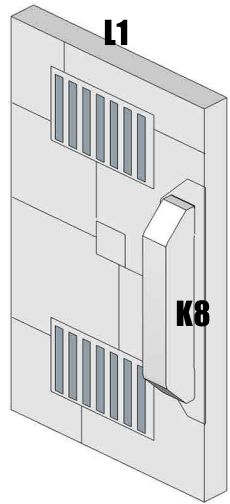
**GLUE BOTH THE STAIRS
AND THE DESK ON THE GROUND
FLOOR.**



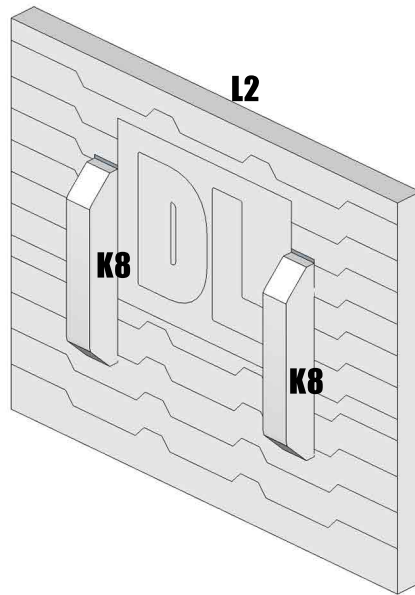


DL INC.

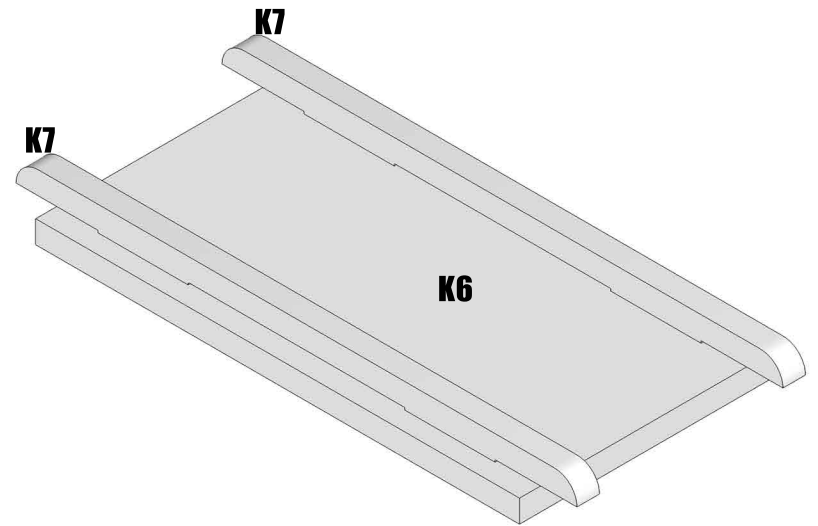




**THE DOORS ARE DESIGNED TO
PRESS FIT INTO THE OPENINGS.**

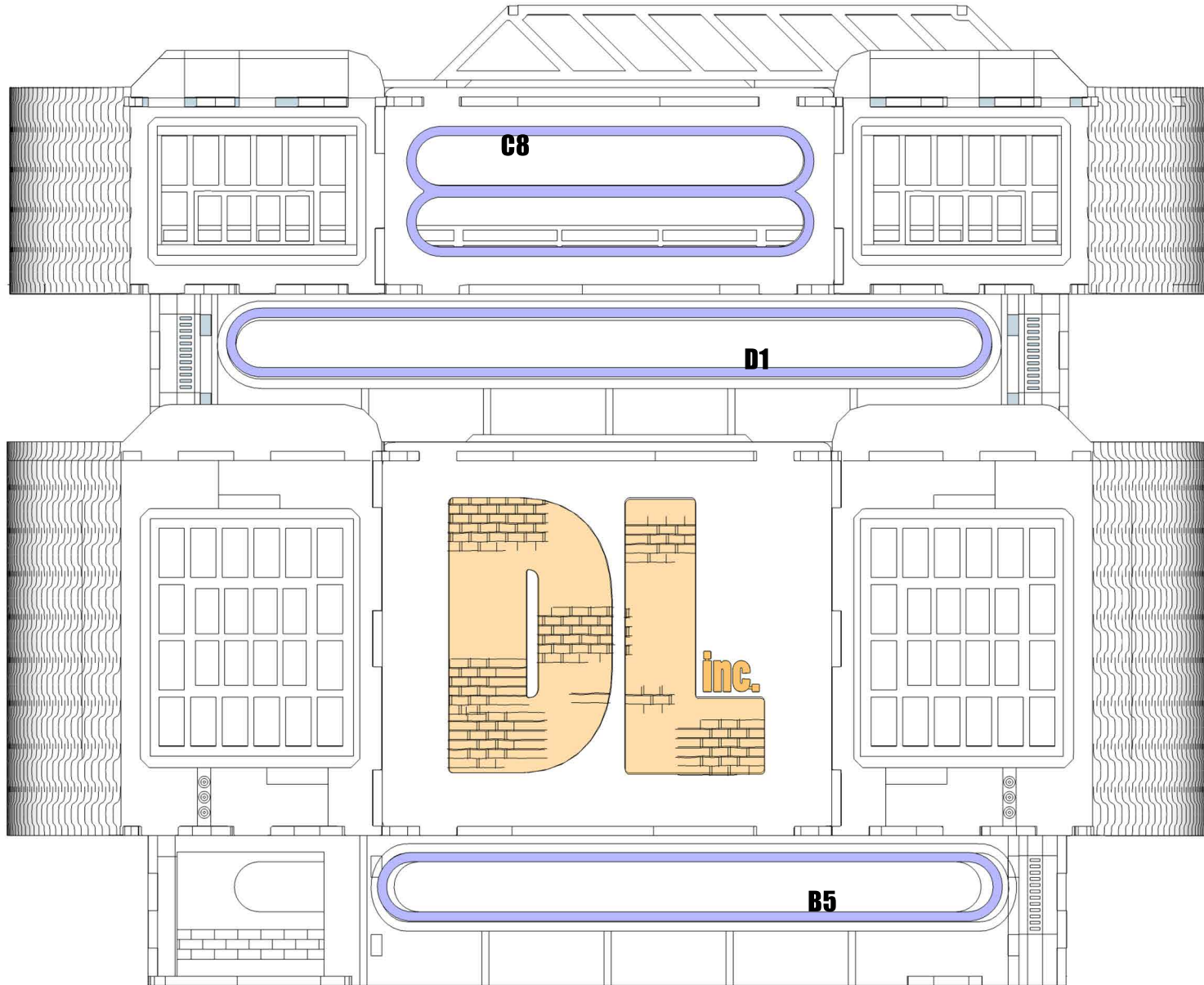


**OPTIONAL ROOF DOOR
COVERS**



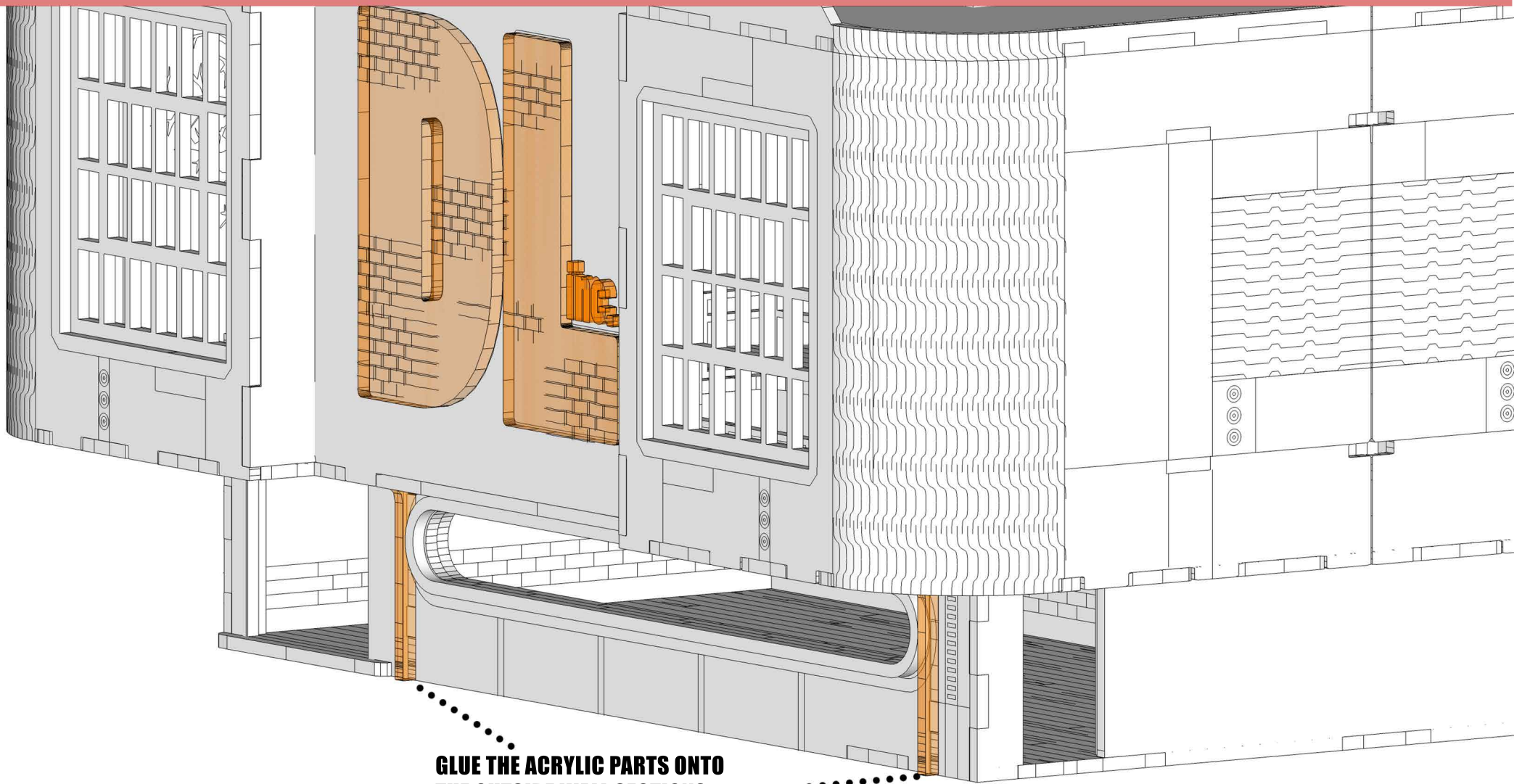


DL INC.





DL INC.

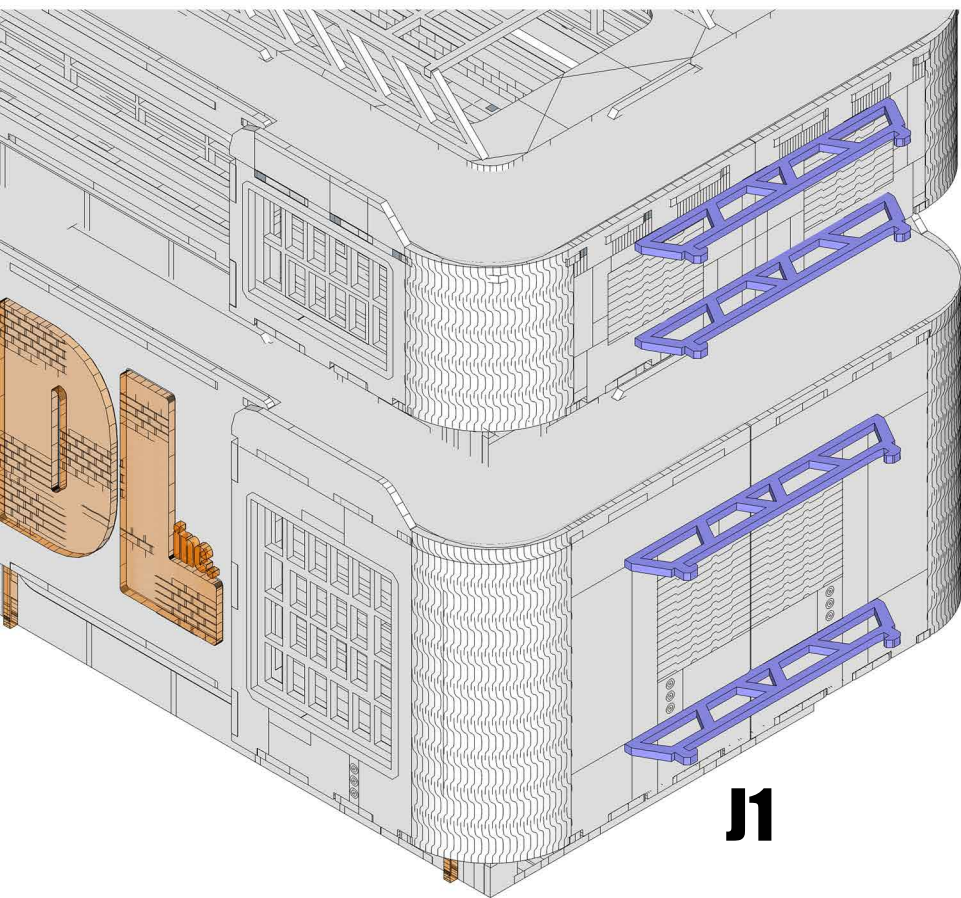


**GLUE THE ACRYLIC PARTS ONTO
THE OUTSIDE WALL SECTIONS.
THERES A LOT OF SPACES FOR
THEM.**

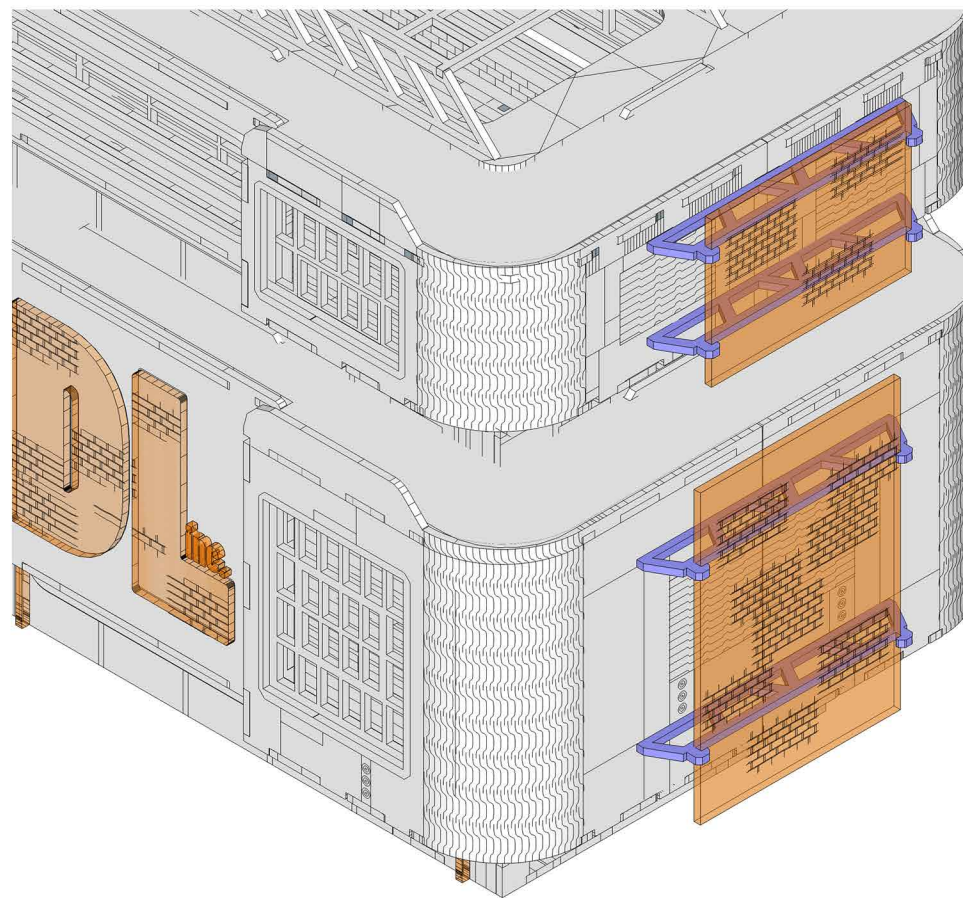
WWW.BLACKSITESTUDIO.COM



DL INC.



J1



SLIDE ACRYLIC PARTS INTO HOLDERS. YOU CAN ADD A SMALL AMOUNT OF GLUE, BUT IT WILL MOST LIKELY NOT NEED IT.