



HOW TO

**ASSEMBLE THE
DUAL HEIGHT COMPETITION
BOXING RING**

INSTRUCTION MANUAL

FOR THE FRAME

INCLUDED IN ASSEMBLY KIT:

- A OUTER RING POSTS (4)
- B FLOOR JOISTS (vary on ring size)
- C1 OUTER BAND JOISTS WITH JOIST BRACKETS (4)
- C2 OUTER BAND JOISTS WITHOUT JOIST BRACKETS (4)
- D1 INNER BAND JOISTS WITHOUT JOIST BRACKETS (2)
- D2 INNER BAND JOISTS WITH JOIST BRACKETS (2)
- E1 ELEVATED OUTER SUPPORT JACKS WITH 3 JOIST BRACKETS (4)
- E2 ELEVATED CENTER SUPPORT JACK WITH 4 JOIST BRACKETS (1)
- F1 FLOOR CENTER SUPPORT JACKS WITH 3 JOIST BRACKETS (4)
- F2 FLOOR CENTER SUPPORT JACKS WITH 4 JOIST BRACKETS (1)



INCLUDED IN ASSEMBLY KIT:

RING COVER
COMPETITION PADDING
STABILIZING CABLES WITH ADJUSTABLE TURNBUCKLES (4)
TURNBUCKLES (16)
TURNBUCKLE FOAM (16)
TURNBUCKLE COVERS (16)
CORNER CUSHIONS (4)
ROPE RETAINING RINGS (16)
ROPE CLAMPS (8)
ROPES WITH COVERS (4)
ROPE SPACERS (8)
RING SKIRT (1)
RING STAIRS (2)
STOOLS (2)
HEX BOLTS - SIZE 3/8" (quantity varies by ring size)

SOLD SEPARATELY:

WOOD FLOORING - 3/4" TONGUE AND GROOVE PLYWOOD

YOU WILL NEED:

2 OR MORE PEOPLE FOR ASSEMBLY
9/16" WRENCH
9/64" DRILL BIT
5/16" NUT DRIVER
#10 1½" TECH SCREWS
TAPE MEASURE
SQUARE
CHALK LINE

STEP-BY-STEP GUIDE TO

ASSEMBLE THE BOXING RING

Measure the space to ensure there is enough room around the ring.

Recommend 3-4 feet on all sides.

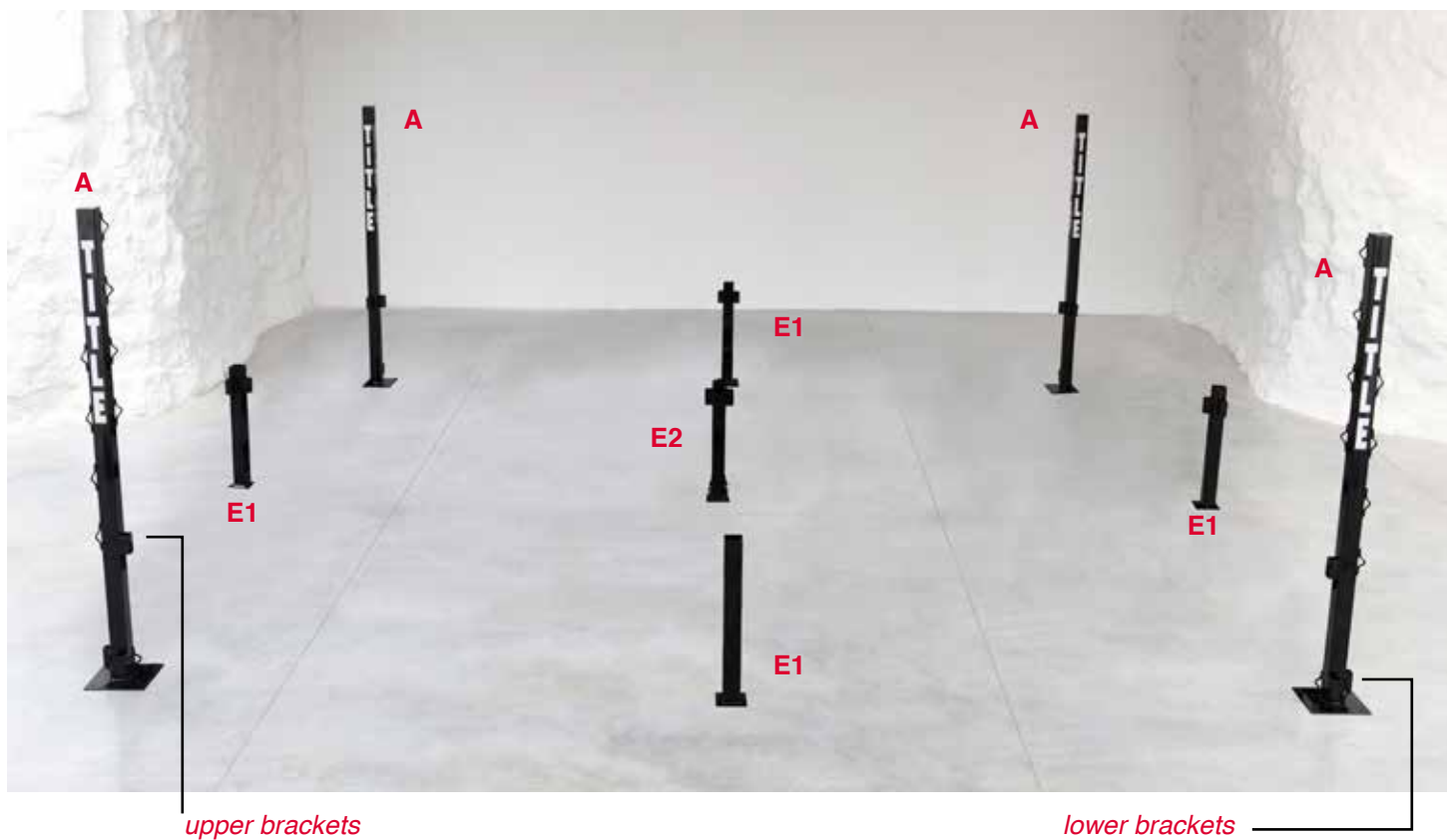
First, place ring posts in a square. For regulation height, the lower brackets face out, top ones face in.

For the lower height, the top brackets face out, the lower ones face in.

Outside of post to outside of post should measure the size of the ring you are assembling - 20', 22', 24'.

Also lay out your support joists (E1) making sure your center support jack (E2) is in the middle.

NOTE: For the floor level setting, replace E1 with F1 and E2 with F2 at this point.



Continue laying out the rest of the frame.
Make sure the top lips of C1/C2 are on the outer edge of the ring.



Start assembling the frame. Insert all the floor joists (A) into D2 and C1.



Insert hex bolts into each and every floor joist/outer band joist contact point using 9/16" wrench.



Connect stabilizing cables from the center support jack to all 4 outer ring posts using turnbuckles. (This step is instead of bolting the outer ring posts to the ground.) **Do not tighten yet.**



“Setting the Square”: Square the ring by measuring corner to corner making sure the cross measurements are the same.



Lay down tongue-and-groove wood. Be sure that it is laid across the beams as pictured below.



Tighten turnbuckles in all 4 corners until ring posts lean out a bit.
Measure with square ruler. Ring post should lean out about $\frac{3}{4}$ " at the top of the square ruler.



Chalk line on the wood along each floor joist.

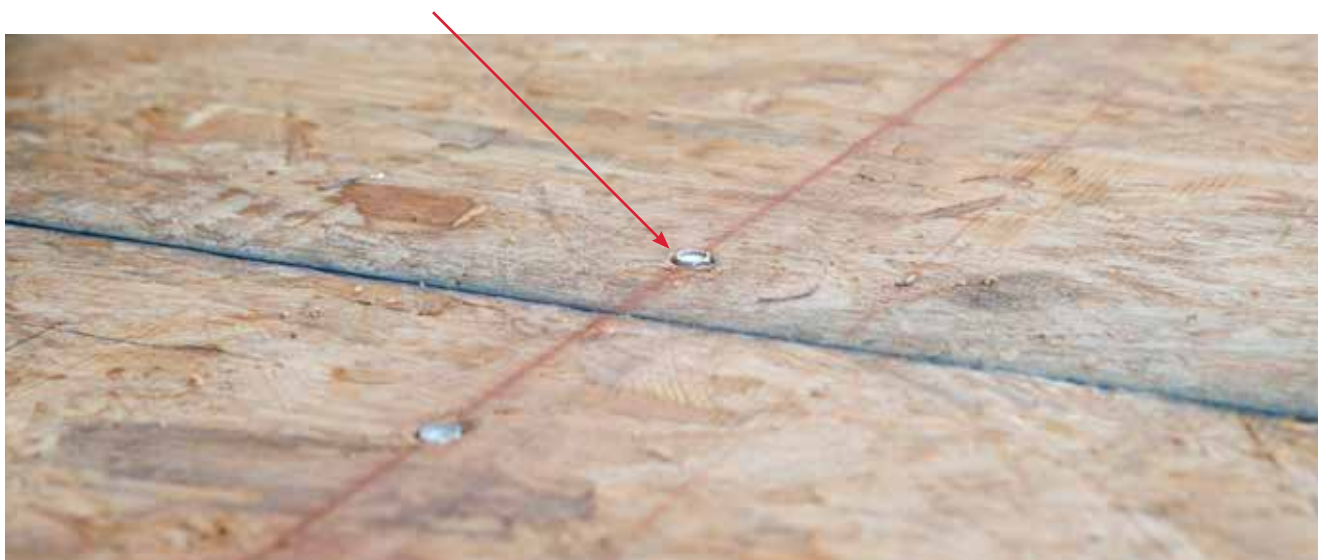


Drill holes through wood and joist to secure the wood to the frame.

- Use 9/64" drill bit and 5/16" nut driver.
- Use #10 1½" tech screws.



- Drill one hole every foot, or 3-4 holes per board depending on the size of the ring.
- Make sure you drill all the way through the joist.
- Make sure screw is flush with the wood.

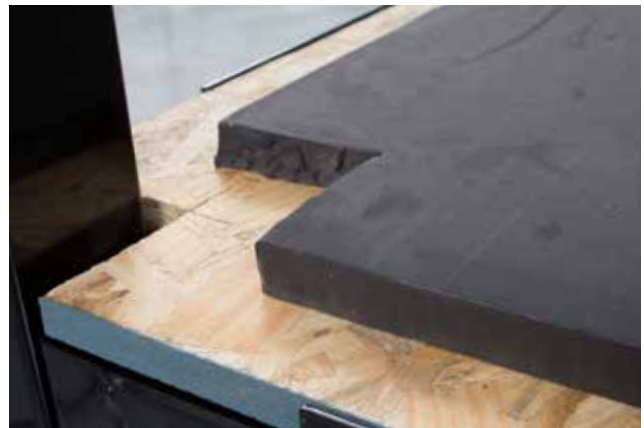


Lay down foam according to "map" provided.

- Put foam down in the opposite direction of the way the wood lays so the seams are not in the same place.



Measure 4" x 4" using square and cut out a corner in the foam pieces around the outer ring posts.



Using duct tape, tape together the foam pieces from one end to another. Crisscross.



Expand turnbuckles to 24" end to end. Hook turnbuckles onto each hook of ring posts.



Slide 4 rope retaining rings onto rope. One person will hold the last ring on the turnbuckle while another person walks around the ring, hooking each ring to a turnbuckle in every corner. Tip: Start on the top hook. Make sure TITLE logo is upright!



Cut rope so the ends only overlap about 4" - 6". **Tip:** Measure this length and cut the other 3 ropes the same length.

- Cut the rope shorter than the sleeve so you can cover the end of the rope afterwards.
- Tape around the edge of the rope. Then wrap the end of the cover over the end of the rope and tape this too.
- Place two rope clamps over overlapped rope and screw tight.
- Tape down rope clamp so no sharp edges are exposed - use same color tape as rope using SKU RSKT.



Repeat for remaining 3 ropes. From top to bottom: red, white, blue, white.



Evenly tighten all turnbuckles. Corner ring posts should now be straight up and down.



NOTE: having one person at each corner post is NOT necessary.

Attach rope spacers - two to each side and approximately 5½ feet apart.



Put on turnbuckle foam and vinyl covers. White diagonal to white; red diagonal to blue.



Attach corner cushions - match colors to vinyl turnbuckle covers.



Lay canvas last to prevent from getting it dirty. Make sure finished seam faces up.



ATTACHING THE RING FLOOR CANVAS

Starting at corner, feed rope through holes of canvas and the lower bar in an over-under fashion. There is one rope per ring side. **Tip:** Make sure to leave slack so there is plenty of rope on either side.

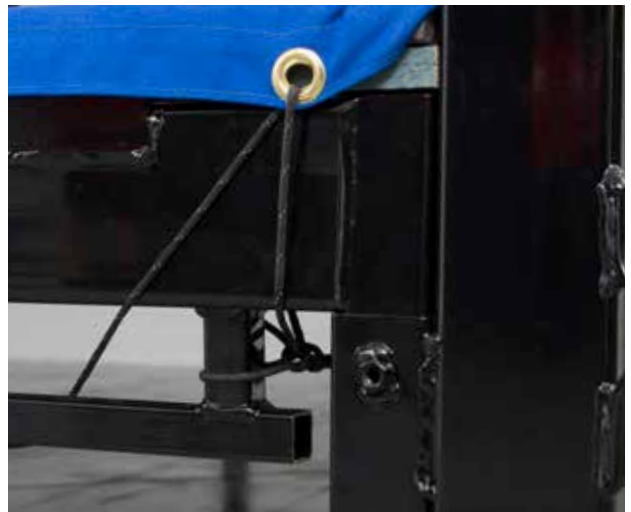
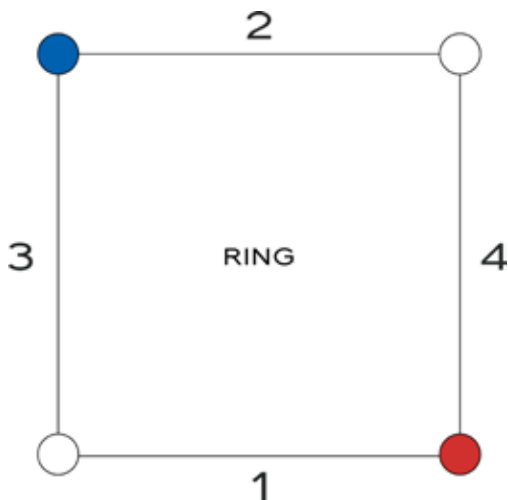
Do not tie the end of the rope until all sides are complete.



Fold the canvas in at the corners.



After running the rope thru Side 1, do the side directly opposite (Side 2 in diagram). This will make sure the canvas is pulled tight. Then complete the remaining two sides. Once all four sides have rope and are tight, cut the rope at the corners and tie tight on bottom bar.



FINAL RING SET-UP

Attach the ring skirt and place the accessories. (Two sets of stairs, one red stool, one blue stool.)



COMPLETED RINGS



Complete elevated level.



Complete lower level.