

**Manufacturers of...and Specialists
in Total Solution Cable Accessories**

For all enquiries please call
0161 874 1480 or
email info@cableglandsuk.com
www.cableglandsuk.com



ORDER BY 3PM FOR NEXT DAY DELIVERY



NATIONWIDE COURIER DELIVERY SERVICE



CUSTOMER SATISFACTION GUARANTEED



NO QUIBBLE RETURNS POLICY

8. The timer is now installed & ready to use.

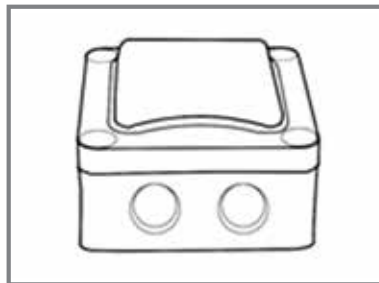


Fig 8.

IMPORTANT NOTE

Once the timer is installed and the timing is set, please allow a minimum of 2 second intervals between the light fittings or heating appliance timing out and switching the timer switch back on.

TSTT 66 IP66 Weatherproof (10 sec-25 min) Installation of Multiple Time Switches

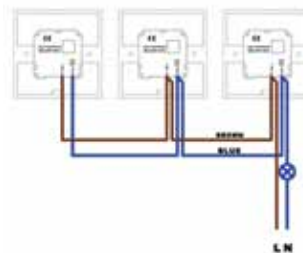
1. After Multiple Time Switches are installed. **REMOVE THE MAGNET - KEEP AWAY FROM CELL PHONES.**

2. Now you are ready to set the time level required on each Time Switch as above in step 5.

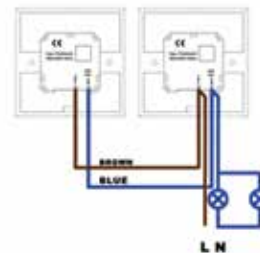
3. Once all the LED's are illuminated you are now ready to set the time level required on each Time Switch as above in step 7 & complete installation as in steps 8, 9 & 10.

WIRING DIAGRAM

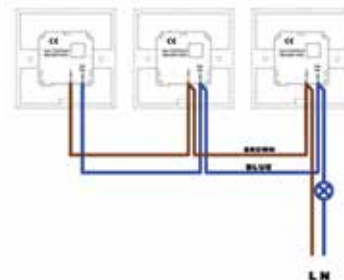
Replace Intermediate



Multiple



Replace Intermediate



**TSTT 66 - USER MANUAL
Time Touch IP66**



For all enquiries please call
0161 874 1480

IMPORTANT NOTICE!

This device should be installed by a qualified electrician in accordance with the latest edition of the IEE Wiring Regulations and any applicable Regulations.

PLEASE ENSURE MAINS POWER IS SWITCHED OFF BEFORE ANY TIMER INSTALLATION

**TSTT 66 / IP66 Weatherproof (10sec-25min)
Installation of a Single Time Switch
No Neutral Required - 16amp / 250V / MAX LOAD 3KW**

1. Mount the IP66 Weatherproof box to your surface using either the four screw holes in each corner or the 2 hole mounting bracket. If using the mounting bracket once secure please clip the Weatherproof box into place.



Fig 1.

2. When installing the cable into the Weatherproof box it is advisable to use an IP68 Cable Gland (not supplied).

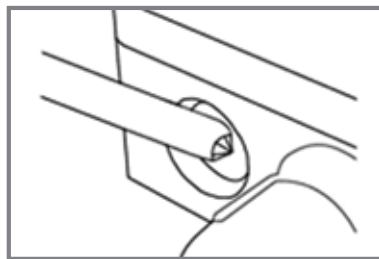


Fig 2.

3. Install power to the Timer Switch ensuring that you have the correct wires in both the Live IN & Live OUT terminals.

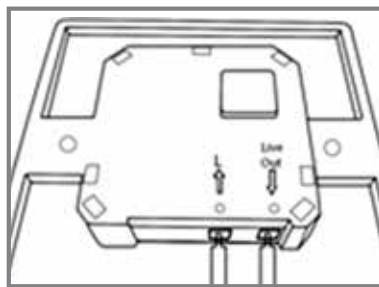


Fig 3.

4. REMOVE THE MAGNET - KEEP AWAY FROM CELL PHONES and the LED will illuminate immediately once the mains power is switched back on.



Fig 4.

5. You are now ready to set your time level required, using the BLACK potentiometer (BLACK TURN SCREW) with your screwdriver set your time level as required.

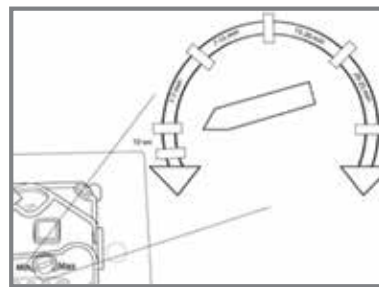


Fig 5.

6. Place the switch back plate into position on the Weatherproof back box and clip the timer switch plate into position ensuring the LED lines up with the LED hole on the plate.

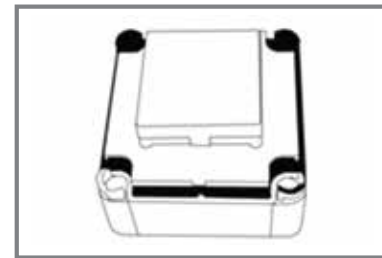


Fig 6.

7. Attach the Weatherproof Face plate & screw into position.

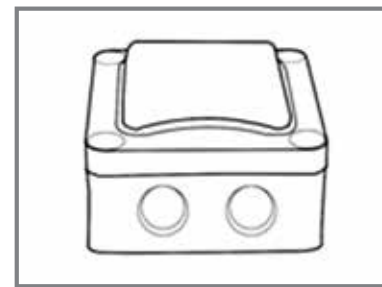


Fig 7.