

**Manufacturers of...and Specialists  
in Total Solution Cable Accessories**

For all enquiries please call  
**0161 874 1480** or  
email [info@cableglandsuk.com](mailto:info@cableglandsuk.com)  
[www.cableglandsuk.com](http://www.cableglandsuk.com)



**ORDER BY 3PM FOR NEXT DAY DELIVERY**



**NATIONWIDE COURIER DELIVERY SERVICE**



**CUSTOMER SATISFACTION GUARANTEED**



**NO QUIBBLE RETURNS POLICY**

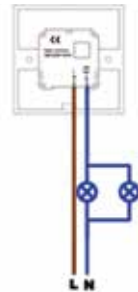
**EXPERT ADVICE, NEXT DAY DELIVERY &  
CARRIAGE PAID ON ORDERS OF £75.00+**

**Distributors of:**  
A1/A2, BW, CW, E1W, E1WF GLAND PACKS  
NYLON CABLE GLANDS & ACCESSORIES  
REDUCERS & ADAPTORS/NYLON/BRASS  
STEEL & MOULDED ENCLOSURES  
CABLE JOINTING KITS  
PVC SLEEVING  
SCREWS & PLUGS  
ATEX PRODUCTS  
MICC PRODUCTS  
CONDUIT ACCESSORIES  
NYLON TERMINAL BLOCKS  
INDUSTRIAL PLUGS & SOCKETS  
ROTARY ISOLATORS  
EARTHING PRODUCTS  
CABLE FIXING (CLEATS, GROMMETS & TIES)  
FLEXIBLE CONDUIT  
E-KLIPS FIXING SYSTEMS  
ENERGY MANAGEMENT  
CABLE LUGS  
TOOLS

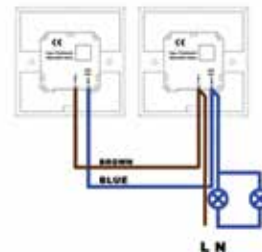
3. Please follow installation instructions from Step 6 for each Time Switch AFTER setting the Time level required.

### WIRING DIAGRAM

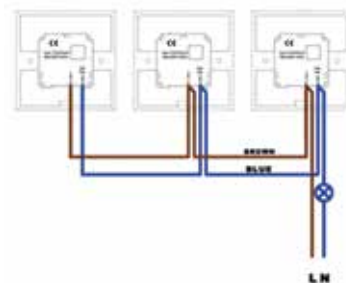
**Conventional**



**Multiple**



**Replace Intermediate**



**TSTT 20 - USER MANUAL  
Time Touch IP20**



For all enquiries please call  
**0161 874 1480**

### IMPORTANT NOTICE!

This device should be installed by a qualified electrician in accordance with the latest edition of the IEE Wiring Regulations and any applicable Regulations.

### PLEASE ENSURE MAINS POWER IS SWITCHED OFF BEFORE ANY TIMER INSTALLATION

#### TSTT 20 / IP20 (10sec-25min)

Installation of a Single Time Switch

No Neutral Required - 16amp / 250V / MAX LOAD 3KW

1. Install power to the Timer Switch ensuring that you have the correct wires in both the Live IN & Live OUT terminals.

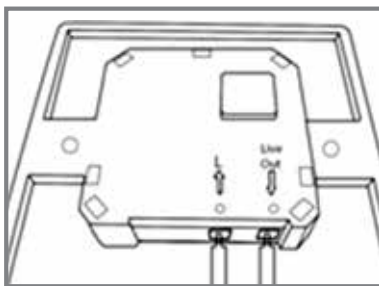


Fig 1.

2. REMOVE THE MAGNET - KEEP AWAY FROM CELL PHONES and the LED will illuminate immediately once the mains power is switched back on.



Fig 2.

3. You are now ready to set your time level required, using the BLACK potentiometer (BLACK TURN SCREW) with your screwdriver set your time level as required.

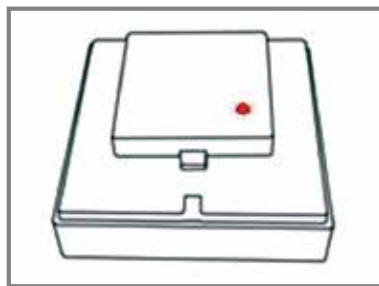


Fig 3.

4. Screw the switch plate into position on the Electrical back box and clip the timer face plate into position.

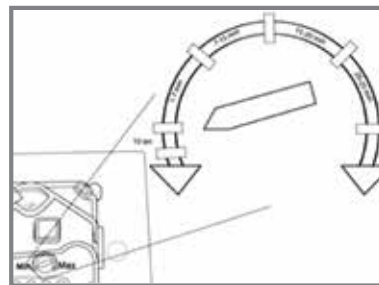


Fig 4.

5. Attach the switch ensuring that the LED hole is in line with the LED.

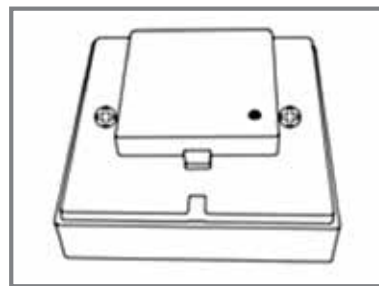


Fig 5.

6. The timer is now installed & ready to use.

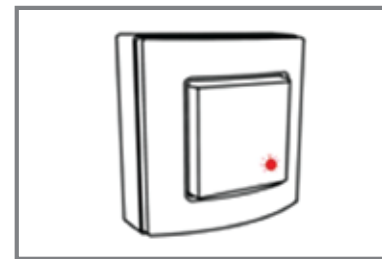


Fig 6.

### IMPORTANT NOTE

Once the timer is installed and the timing is set, please allow a minimum of 2 second intervals between the light fittings or heating appliance timing out and switching the timer switch back on.

#### TSTT 20 IP20 Weatherproof (10sec-25min) Installation of Multiple Time Switches

1. After Multiple Time Switches are installed. **REMOVE THE MAGNET - KEEP AWAY FROM CELL PHONES.**

2. Now you are ready to set the time level required on each Time Switch as above in step 5.