

Manual 2-wire Columbus Time Touch *AIR* IP20
100% Made in Denmark

Modern technology for closed rooms/halls

The egg of Columbus performs again. This brilliant product, which has comfort and safety in top and despite the new technology, maintain the idea with Columbus timers without needed - neutral. "IT IS BRILLIANT" = IT LIGHTS UP BEFORE ENTRY!

Product information, technical specification and environment

LED-light control with extensive coverage of 700m³ and no "dead" angles.

1 unit is enough for a whole stairway! Fits into boxes for Denmark, Europe and UK.

Functions and settings

A: 2 pcs. battery holders for ML2032 rechargeable batteries

B: Guiding light (LED)

C: Built-in lux sensor - use the red removable label for testing/service

D: Potentiometer - automatic timer or staircase switch for communal areas

E: Sensitivity - low - high - medium

F: Microphone - brain

G: Push bottom - repeat, reset, turn on/off

Potentiometer and installation options

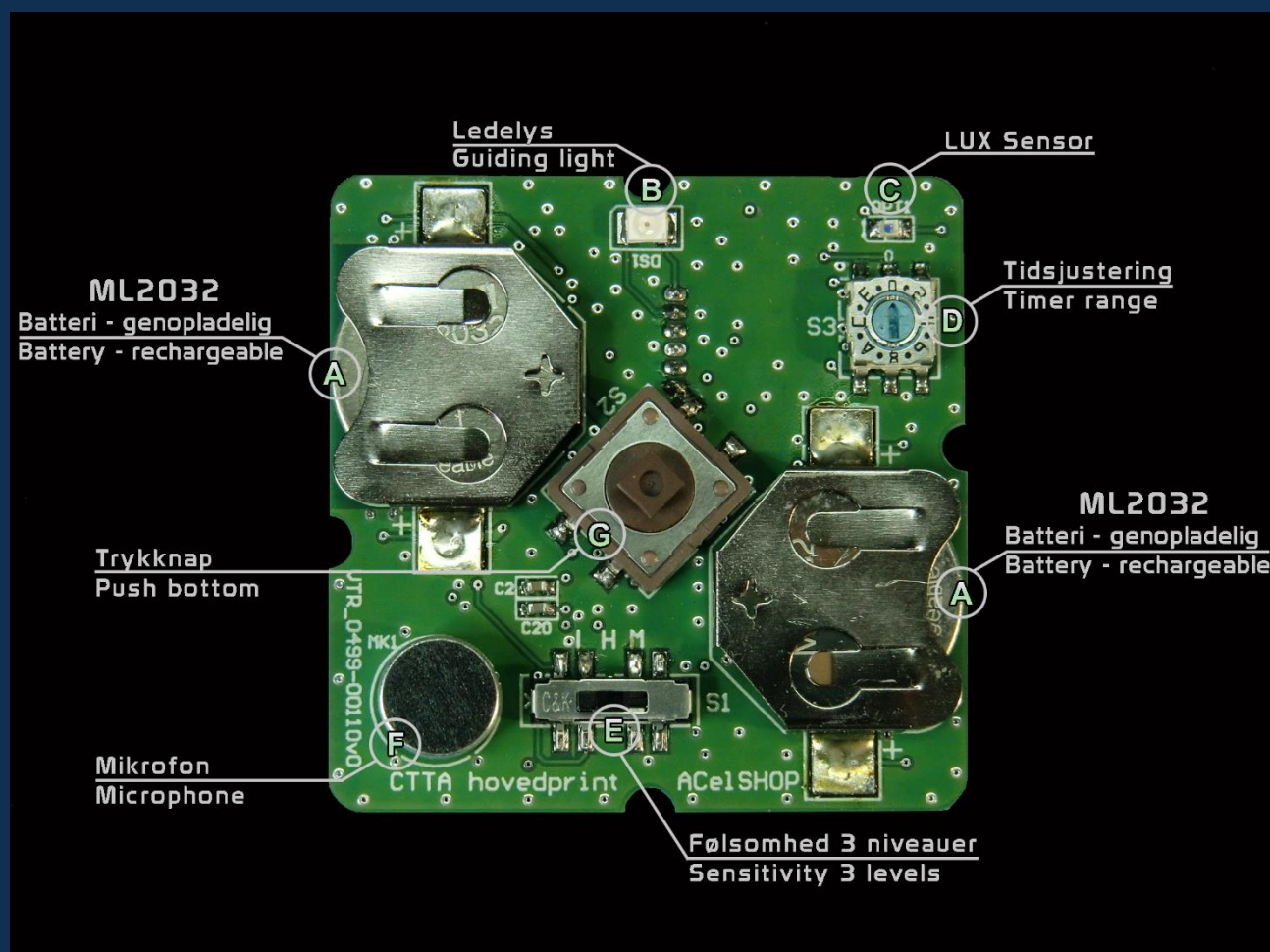
0: only for testing on/off

1 - 9: automatic timer - the timer can be turned off by holding push bottom for 6 sec.

1=1 m. 2=2 m. 3=3 m. 4=5 m. 5=10 m. 6=15 m. 7=20 m. 8=25 m. 9=30 m.

A - F: staircase switch - cannot be turned off by holding the push bottom
- approved for communal areas

A=1 m. B=3 m. C=5 m. D=10 m. E=15 m. F=20 m.



Switch off the power supply before installation and wiring.

Optimal installation of Columbus Time Touch AIR is in the middle of the location, away from hit air ducts and air circulation.

Sensitivity guide for location environments:

L = stone/concrete non-sound-absorbing poor acoustics H = sound-absorbing and good acoustics M = reasonably damping and reasonable acoustics.

Technical specifications

Supply voltage:	230V AC 50Hz
Contact:	16A 250V AC
Switching current for all type of lamps:	3000 W
Lux-range:	Built-in

Time adjustment for automatic timer:	1 - 30 min.
Time adjustment for staircase switch:	1 - 20 min.
Consumption:	Approx. 0,3 W.
Degree of protection:	IP20
Ambient temperature:	0° - 50°C
EMC(LVD):	EN60669-2-1:2004
LVD-directive:	2014/35/EU
EMC-directive:	2014/30/EU
RoHS-directive:	2011/65/EU+2015/863/EU



Environment:

This product and the batteries provided cannot be deposited in non-recyclable waste.

Take your discarded product to a recognized collection point. Just like producers and importers, you too play an important role in the promotion of sorting, recycling and reuse of discarded electrical and electronic equipment.

To finance the rubbish collection and waste treatment, the government levies recycling charges in certain cases (included in the price of this product).

