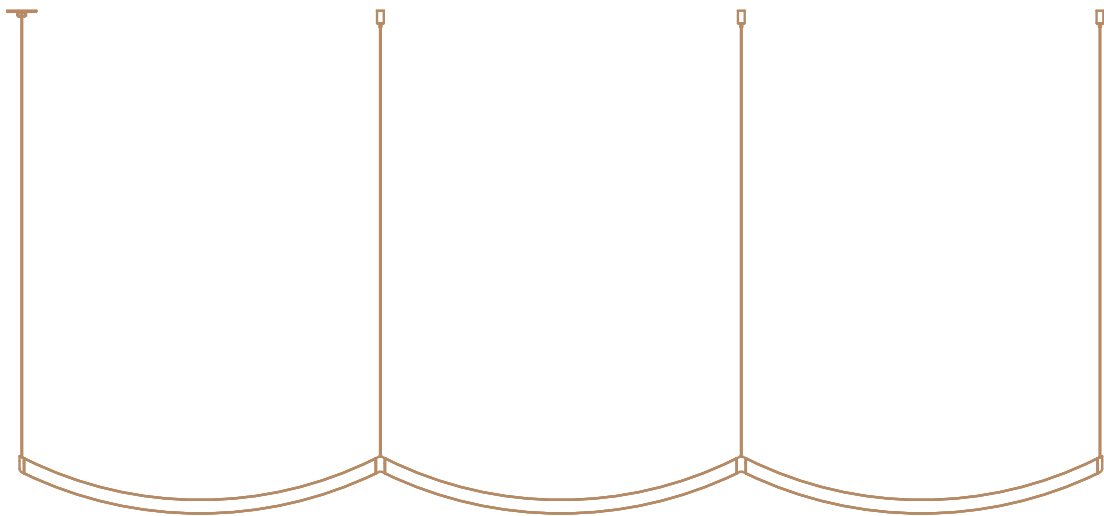




TASMAN PENDANT (IP22)

SINGLE, DOUBLE, TRIPLE

Installation guide



LOW VOLTAGE - Do not wire light fitting directly to mains power.

TASMAN PENDANT

Installation guide



DANGER electric shock risk. Installation must be conducted by a licensed electrician.

STAGE 1: INSTALL DRIVER

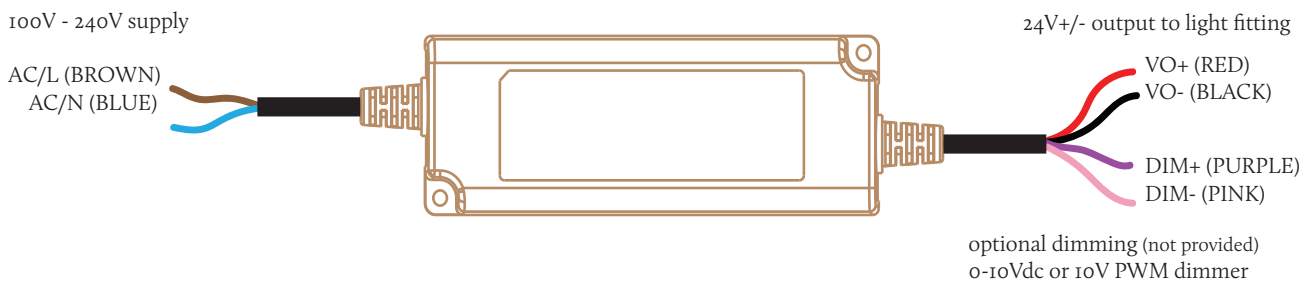
Mean Well PWM-60-24

24V constant voltage

Minimum cut-out hole diameter: 60 mm

Size: 150 x 53 x 35 mm

Plastic case: IP67 rated



- 1: Select driver location, ideally a remote location that is accessible such as an attic or cupboard. Affix driver to solid surface.
- 2: Ensure mains supply is switched off. Connect 120V-240V Load and Neutral supply to the left side of the driver as shown.
- 3: Terminate earth if present.

- 4: (*Optional, not supplied*) If dimming is required, connect leads for 0-10Vdc or 10V PWM dimmer as illustrated.

Note: While at the framing stage, run a 2x core cable from the Vo+/Vo- output on the driver, to the desired position of the luminaire.

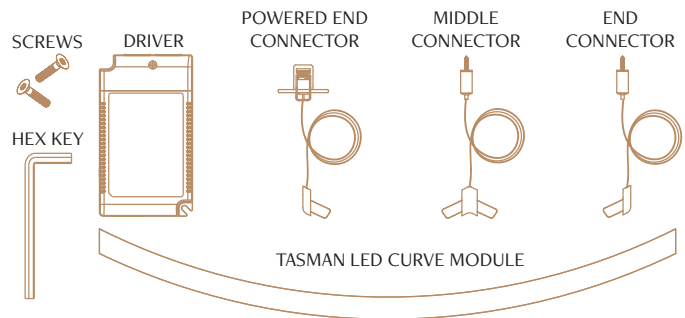
STAGE 2: INSTALL FITTING



LOW VOLTAGE - Do not wire light fitting directly to mains power.

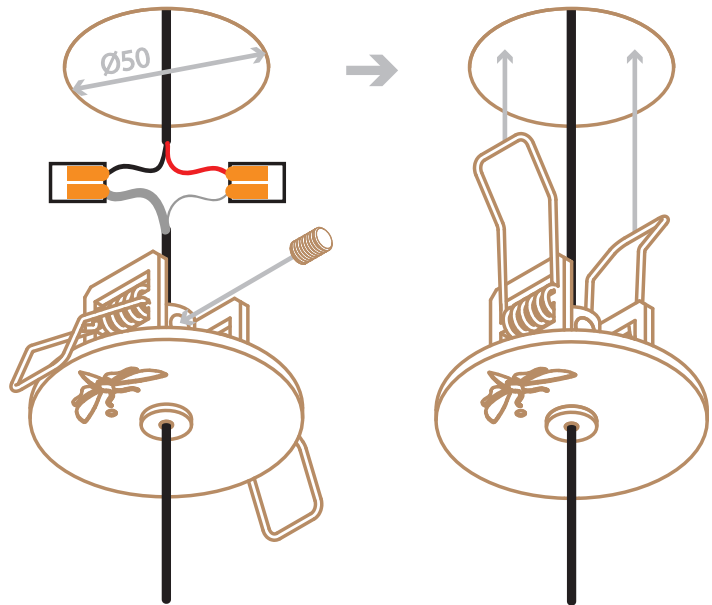
STEP 1:

- Remove all items from box.
- Install driver as shown on opposite page.
- Uncoil and straighten cords.



STEP 2:

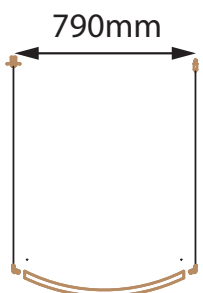
- Drill $\text{Ø}50$ hole in the ceiling.
- Connect power supply from LED luminaire to driver using wago connectors.
- Adjust cord length to required drop and secure cord grip.
- Lift arms of canopy and insert into pre-drilled hole.



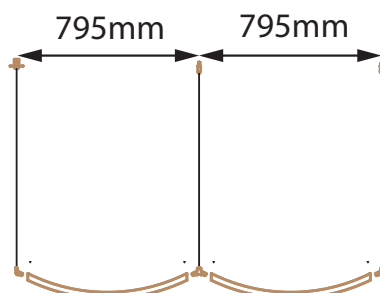
STEP 3:

- Mark out mount points for suspension mounts using guide below. Pre-drill and insert drywall anchors as required.

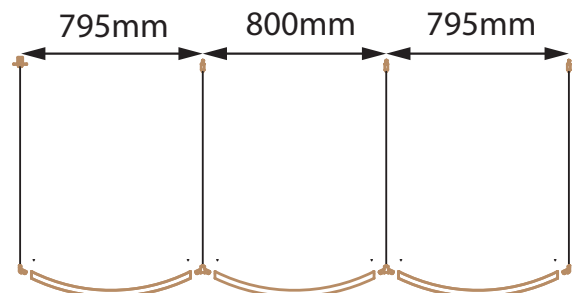
TASMAN SINGLE



TASMAN DOUBLE



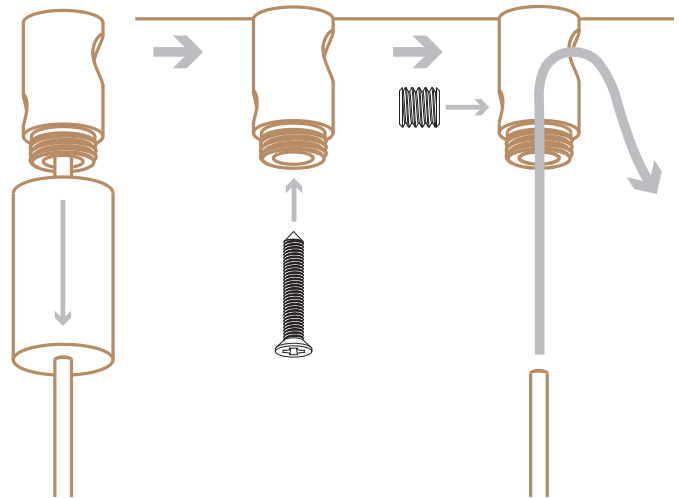
TASMAN TRIPLE



STAGE 2: INSTALL FITTING CONTINUED

STEP 4:

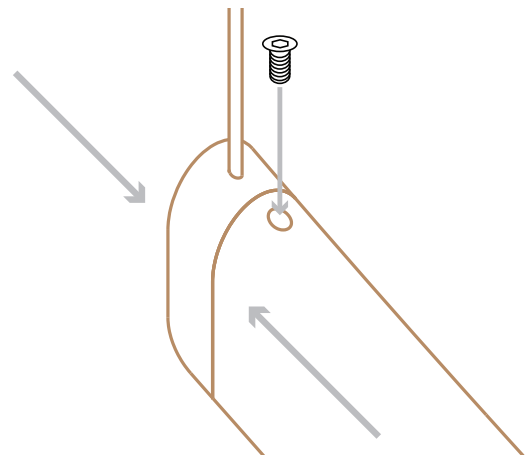
- Unscrew cap from suspension mount and rest it on the end connector. Affix mount to ceiling.
- Thread cord through the bottom and out the side of the suspension mount.
- Adjust cord length to desired position and fix with grub screw. (Do not trim excess cable just yet.)



STEP 5:

- Using hex key provided, undo the screws located on the end connectors.
- Plug in curves accordingly and secure tightly with end connector screws.

NOTE: Screws are very small, take extra care when installing as they are easily misplaced.



STEP 6:

- Adjust height with the suspension cord grips and align components by hand.
- Test power to luminaire. Adjust height and linear alignment (if required). Check the screw on top of curve for tightness.

NOTE: if these adjustments are not performed with accuracy, light will leak from the fitting.

- Using side cutters, trim excess suspension cable as close to the mounting body as possible and reattach cap.

