

Inline Exhaust Fan

Codes: 8172 (100mm), 8173 (125mm),
8174 (150mm), 8175 (200mm)

exclusive to Newtech



Quiet, powerful and a compact solution for a variety of domestic and commercial applications. Featuring a unique easy fix mounting system which simplifies onsite installation, saving time and money.

Warranty

- 5 years

Applications and Installation

- To be used in conjunction with internal grilles and ducting (not included)
- Suitable for long ducting lengths (up to 20m)*
- Suitable for single or multiple rooms
- Suitable for multiple room applications including:
 - Bathrooms
 - Laundries
 - Kitchens and range hoods
 - Garbage exhaust
 - Supply air systems
- Can be installed by a home handyman or industry professional (electrician or air conditioning installer)

* Correctly sized ducting

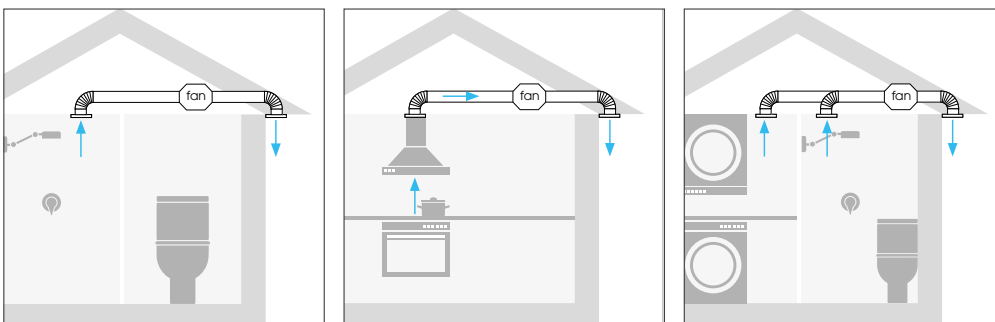
Manufacturer

expella™

Features and Benefits

- Compact
- 2 speed motor with external high/low speed switch
- Low wattage motor saves energy
- Manufactured in flame retarding PP
- Quiet operation – from 26 dBA (EMF100 low speed)
- Available in 6 sizes
- Unique easy fix mounting system

Applications



Inline Exhaust Fan

Codes: 8172 (100mm), 8173 (125mm),
8174 (150mm), 8175 (200mm)

exclusive to Newtech

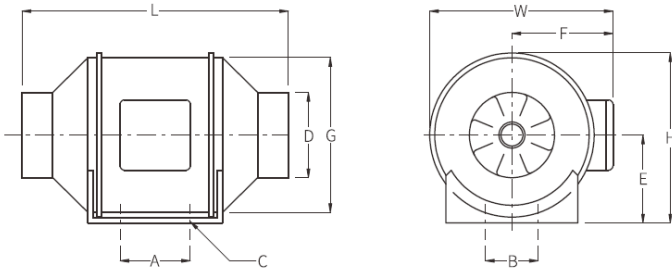
Specifications

| Model | Item code | Duct Size (mm) | Volts | W | Volume m³/hr | Volume L/s | Pa (max) | dB(A)* | Weight (kg) |
|---------|-----------|----------------|-------|------------|--------------|------------|------------|----------|-------------|
| EMF 100 | 1EMF100 | 100 | 240 | 26 23 | 198 165 | 55 45 | 156 131 | 31 26 | 1.5 |
| EMF 125 | 1EMF125 | 125 | 240 | 33 28 | 284 248 | 79 69 | 159 106 | 31 26 | 1.5 |
| EMF 150 | 1EMF150 | 150 | 240 | 54 44 | 530 410 | 147 113 | 300 240 | 33 29 | 2.6 |
| EMF 200 | 1EMF200 | 200 | 240 | 128 123 | 840 690 | 233 192 | 352 274 | 63 55 | 4.9 |
| EMF 250 | 1EMF250 | 250 | 240 | 225 165 | 1405 1064 | 390 295 | 488 371 | 66 58 | 7.5 |
| EMF 315 | 1EMF315 | 315 | 240 | 412 306 | 2206 1750 | 612 486 | 693 435 | 69 61 | 11 |

*Measured at 3 metres

Dimensions

| Model | A | B | C | ØD | E | F | G | L | W | H |
|---------|-----|-----|---|-----|-----|-----|-----|-----|-----|-----|
| EMF 100 | 80 | 60 | 4 | 97 | 99 | 116 | 163 | 302 | 204 | 195 |
| EMF 125 | 80 | 60 | 4 | 123 | 99 | 116 | 163 | 257 | 204 | 195 |
| EMF 150 | 80 | 60 | 4 | 147 | 109 | 127 | 187 | 313 | 204 | 208 |
| EMF 200 | 100 | 94 | 4 | 197 | 125 | 137 | 205 | 302 | 204 | 237 |
| EMF 250 | 150 | 150 | 4 | 246 | 150 | 174 | 261 | 383 | 204 | 286 |
| EMF 315 | 181 | 178 | 4 | 315 | 187 | 216 | 325 | 446 | 204 | 357 |



Performance

