

764100 - BADMINTON POSTS

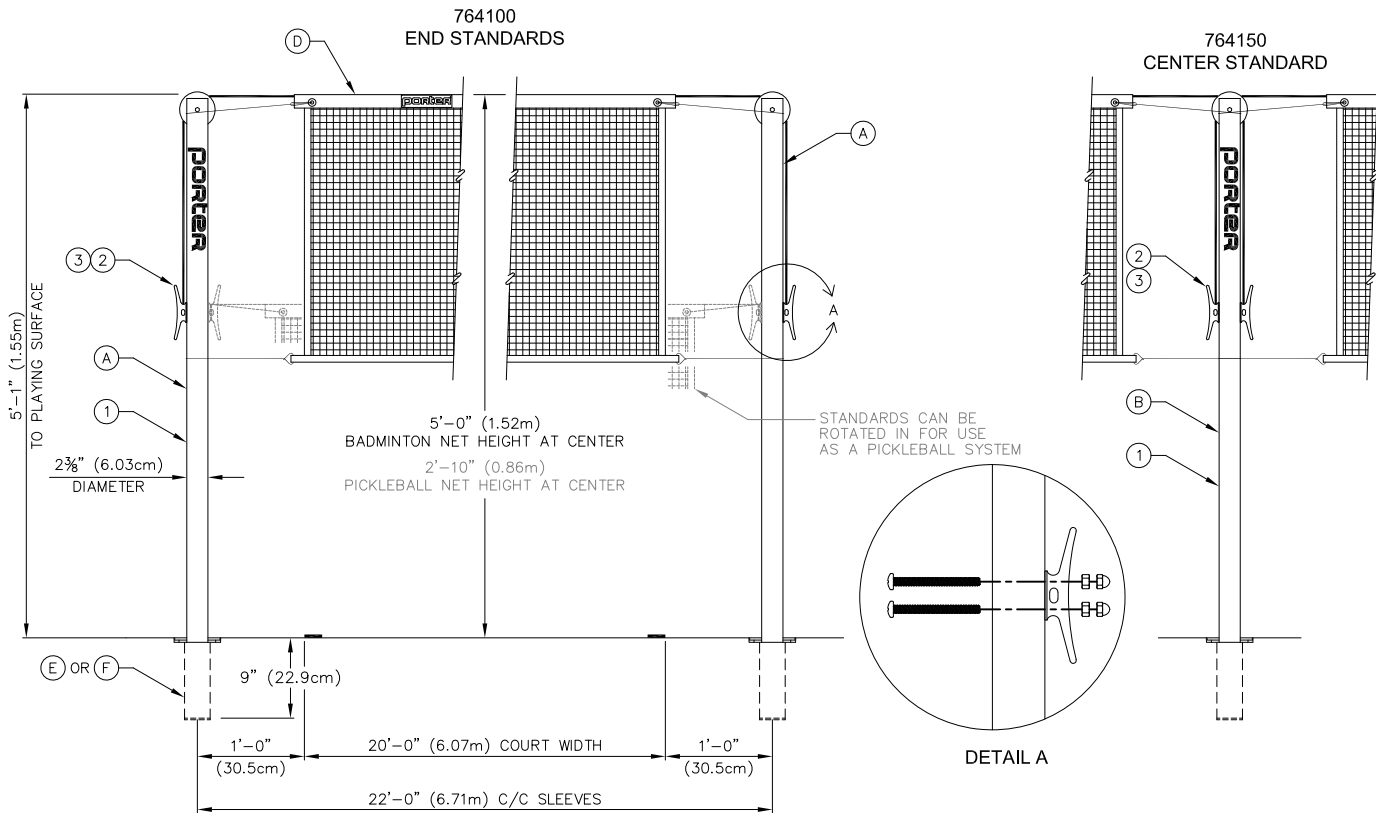
2³/₈" DIA. BADMINTON POSTS

Porter

WWW.PORTERATHLETIC.COM/FACILITY

BADMINTON SPECIFICATION SHEET

V-764-1



PARTS LIST				
No.	00764 100 QTY.	00764 150 QTY.	DESCRIPTION	
1	2	1	UPRT 00 470/292000	UPRIGHT ASSEMBLY
2	2	2	ROPE 00008 0G0	ROPE CLEAT
3	4	0	HDWE 06222	1/4" x 4" Lg. MACHINE SCREW
4	0	2	HDWE 06213	1/4" x 4 1/2" Lg. MACHINE SCREW
5	4	2	HDWE 03004 0E0	HEX NUT- 1/4-20
6	4	0	HDWE 03039 0E0	ACORN NUT- 1/4-20

Ⓐ — 764100 2³/₈" DIA. SLEEVE-TYPE END STANDARD POSTS (PAIR)

Ⓓ — 2236110 BADMINTON NET (EACH)
See V-2236-11 20' x 30" (6.10m x 76.2cm)

Ⓑ — 764150 2³/₈" DIA. SLEEVE-TYPE CENTER STANDARD (EACH)

Ⓔ — 2³/₈" DIA. INDOOR FLOOR SLEEVE WITH COVER (EACH)

Ⓒ — 779000 2³/₈" DIA. PORTABLE-TYPE END STANDARD POSTS (PAIR)

Ⓕ — 00827-000 2³/₈" TO 3/2" SLEEVE ADAPTER (EACH)
See V-827

Porter[®]

888-277-7778 PORTER@PORTERATHLETIC.COM
© COPYRIGHT 2020 PORTER ATHLETIC - ALL RIGHTS RESERVED

PROJECT NUMBER _____

PROJECT NAME _____

11/17/2020

764100 - BADMINTON POSTS

2³/₈" DIA. BADMINTON POSTS

SPECIFICATIONS

PORTER No. 764100 INTERNATIONAL COMPETITION SLEEVE TYPE BADMINTON END STANDARDS (PAIR)

Standards designed to meet the Badminton World Federation specifications for competition badminton.

Uprights to be of heavy-wall 2-3/8" (6.03cm) O.D. steel tubing finished in a durable powder-coated finish. (Specify type of 2-3/8" diameter floor sleeve, or the No. 00827-000 adapter for use in 3-1/2" diameter sleeves).

Uprights fitted with a pulley to reduce cable drag on the net. Pulley to be made of cast iron for additional strength and stability. Outside of uprights shall be equipped with cast type rope cleats for securing net rope and maintaining proper tension.

Rope cleat shall be usable as an attachment height for optional Pickleball net height.

PORTER No. 764150 INTERNATIONAL COMPETITION SLEEVE TYPE BADMINTON CENTER STANDARD (EACH)

Center standard shall consist of one upright similar to above with attachment hardware on both sides of upright for double court use.

PORTER No. 779000 INTERNATIONAL COMPETITION PORTABLE TYPE BADMINTON END STANDARD (PAIR)

Portable standards shall consist of two uprights similar to above with additional T-shaped steel tip and roll bases.

OPTIONAL ITEMS TO SPECIFY

- See Page No. V-827 for specifications on No. 00827-000 Floor Sleeve 2-3/8" to 3-1/2" Adapter (Each).
- See Page No. G-770 for specifications on No. 00770-100 and 00770-200 Indoor Floor Sleeves (Each).
- See Page No. G-772 for specifications on No. 00772-100 and 00772-200 Indoor Floor Sleeves (Each).