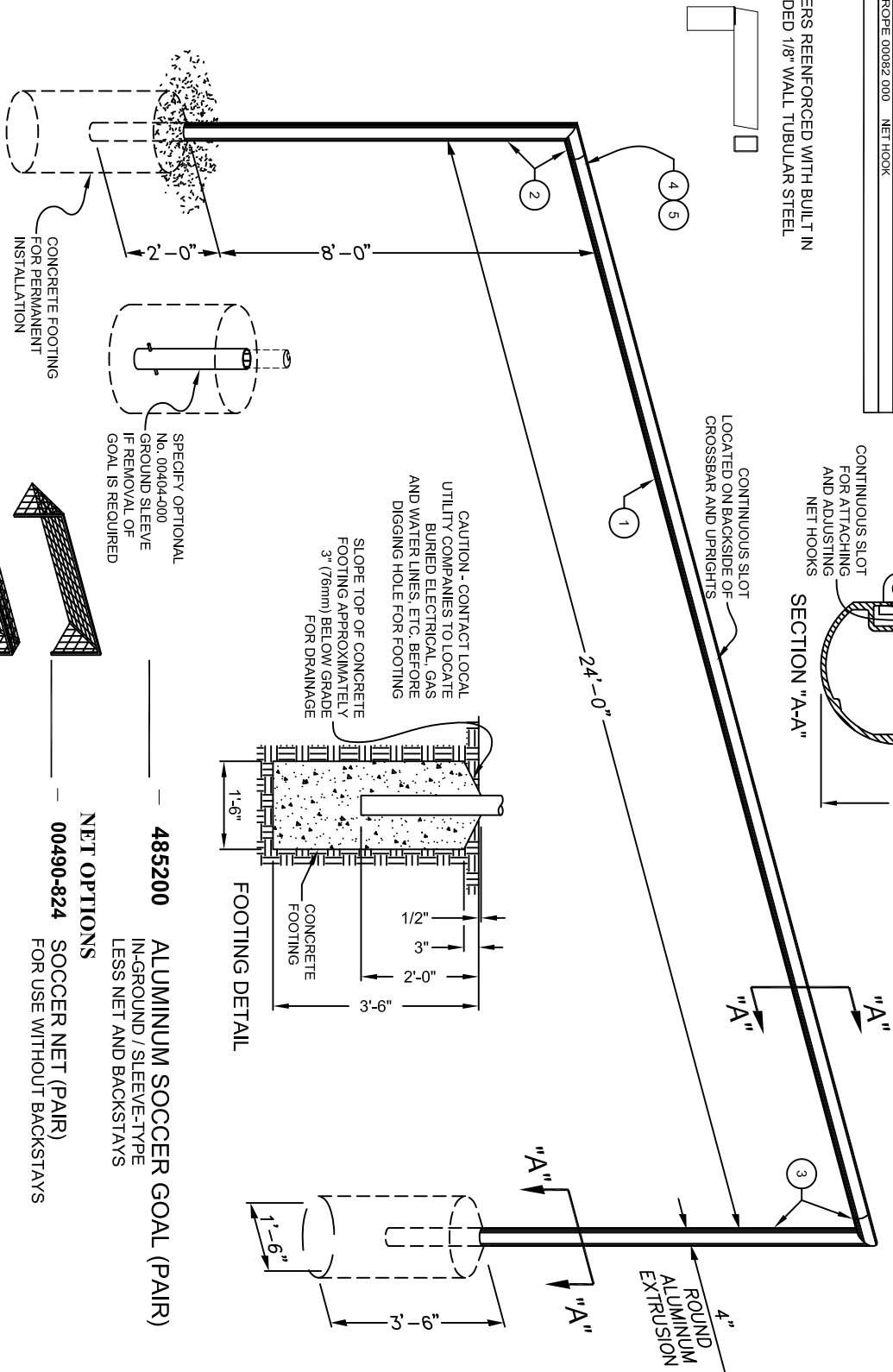
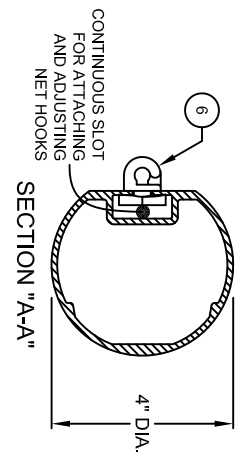


PARTS LIST		
No.	QTY.	DESCRIPTION
1	2	FRAME4872G CROSSBAR
2	2	FRAME4852UL SIDEBAR - LeftHand
3	2	FRAME4852UR SIDEBAR - RightHand
4	4	FLAT 4872 1EO CROSSBAR TAPPED INTERNAL FLAT
5	12	HDWE 09051 0EO 3/8" x 1/2" Lg. SET SCREW
6	80	ROPE 00082 000 NET HOOK

CORNERS REENFORCED WITH BUILT IN WELDED 1/8" WALL TUBULAR STEEL

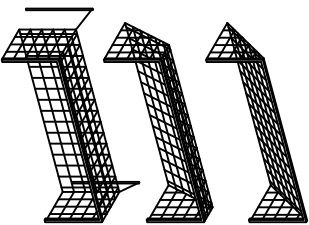


OPTIONAL ACCESSORIES

- No. 00404-000 GROUND SLEEVE
- No. 00069-204 UPRIGHT PADDING
- No. 291200 STANDARD BACKSTAYS
- No. 292200 EUROPEAN BACKSTAYS
- No. 00422-040 BACKPOST NET SUPPORTS

PAGE NO.

- R-404
- R-69-2
- R-291-2
- R-292-2
- R-422



485200 ALUMINUM SOCCER GOAL (PAIR)
IN-GROUND / SLEEVE-TYPE
LESS NET AND BACKSTAYS

NET OPTIONS
00490-824 SOCCER NET (PAIR)
FOR USE WITHOUT BACKSTAYS

00491-824 SOCCER NET (PAIR)
FOR USE WITH No. 291200 STANDARD BACKSTAYS
or No. 292200 EUROPEAN BACKSTAYS

00492-824 SOCCER NET (PAIR)
FOR USE WITH No. 00422-040 BACKPOST NET SUPPORTS

SEE PAGE No. R-490 FOR SOCCER NET SELECTION INFORMATION

SPECIFICATIONS

PORTER No. 485200 CHAMPIONSHIP STYLE SOCCER GOALS LESS BACKSTAYS AND NET

IN-GROUND / SLEEVE-TYPE (ONE PAIR)O-PAD BACKBOARD PADDING KIT FOR OFFICIAL

Soccer goals shall meet all NFHS, NCAA and FIFA requirements for championship soccer tournaments. The bottom edge of the horizontal crossbar shall be located 8'-0" above the playing field, with the uprights positioned with a 24'-0" inside dimension. Goals shall be furnished in three sections (crossbar and two uprights) for ease of assembly or dismantling for seasonal use.

Crossbar and uprights are constructed of a 4" diameter lightweight high-tensile (6063-T6) aluminum extrusion finished in a durable white powder-coated finish. All aluminum extrusion sections shall be designed with an internal continuous channel configuration, and furnished with special molded, high-tensile nylon no-tie net attachment clips for ease of installing or removing the nets. Upright corners shall be reinforced with built in welded 11 gauge tubular steel corner brackets. Uprights shall be secured to the crossbar with these welded steel corner brackets.

Uprights shall extend 2'-0" into concrete footings. (Specify optional No. 00404-000 ground sleeves when removal of goals is required.)

OPTIONAL ITEMS TO SPECIFY

- See Page No. R-404 for specifications on Porter No. 00404-000 Outdoor Ground Sleeve (Each) when removal of goals is required.
- See Page No. R-69-2 for specifications on Porter No. 00069-204 Upright Padding (Set of Two, for one goal).
- See Page No. R-291-2 for specifications on Porter No. 291200 Standard Backstays (Set of Four).
- See Page No. R-292-2 for specifications on Porter No. 292200 European Backstays (Set of Four).
- See Page No. R-422 for specifications on Porter No. 00422-040 Backpost Net Supports (Set of Four).
- See Page No. R-490 for Soccer Goal Net selection information.
(Specify No. 00490-824, 00491-824 or 00492-824, depending on type of backstay.)