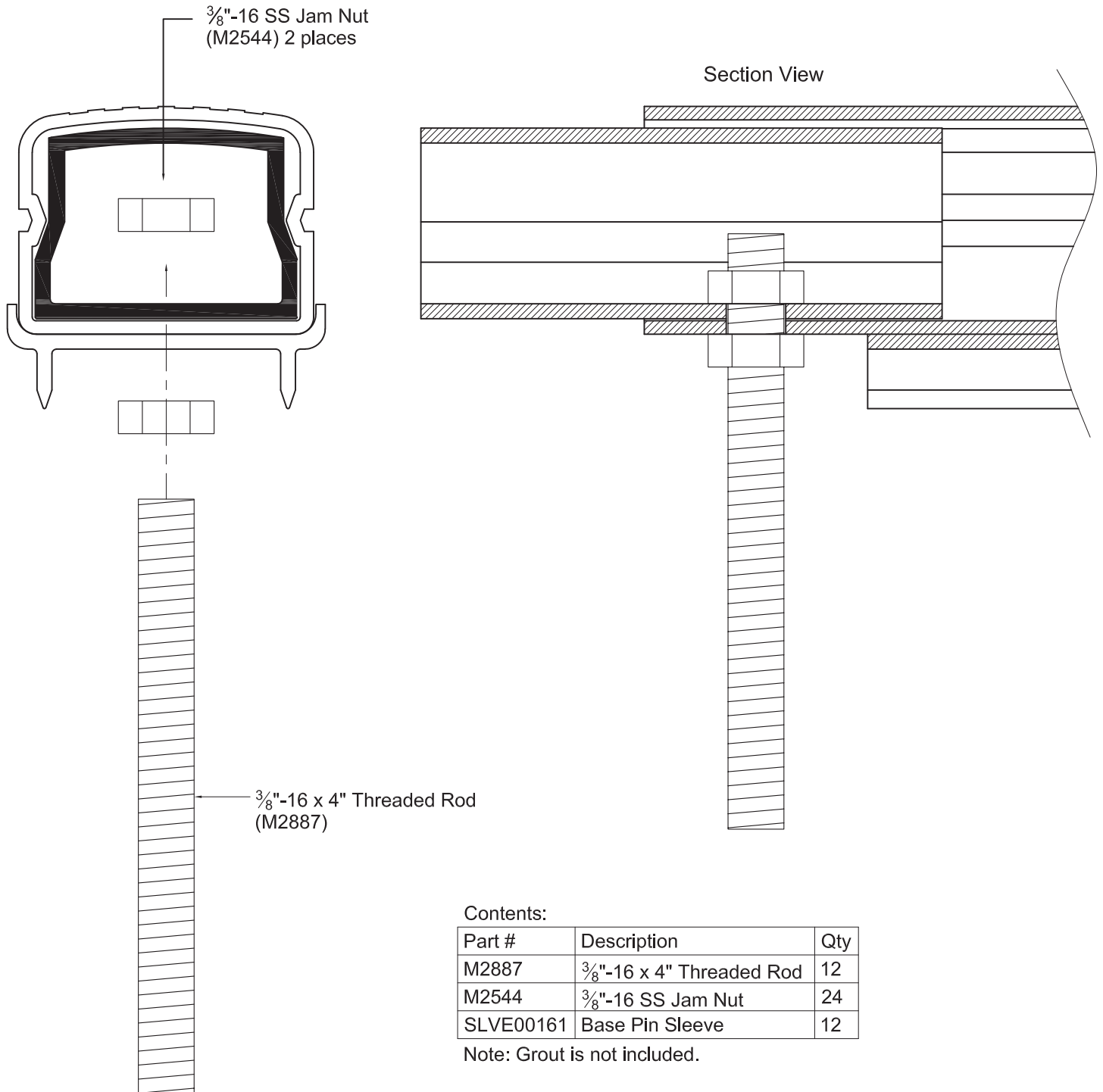




www.gillathletics.com
800-637-3090

851P - TRACK CURBING BASE PINS ANCHOR PIN INSTALLATION

1. Determine which joints require anchor pins.(suggested locations on page 3)
2. Drill $\text{Ø}\frac{3}{8}$ " hole in bottom of curb as shown below and install pin with $\frac{3}{8}$ "-16 jam nuts provided.

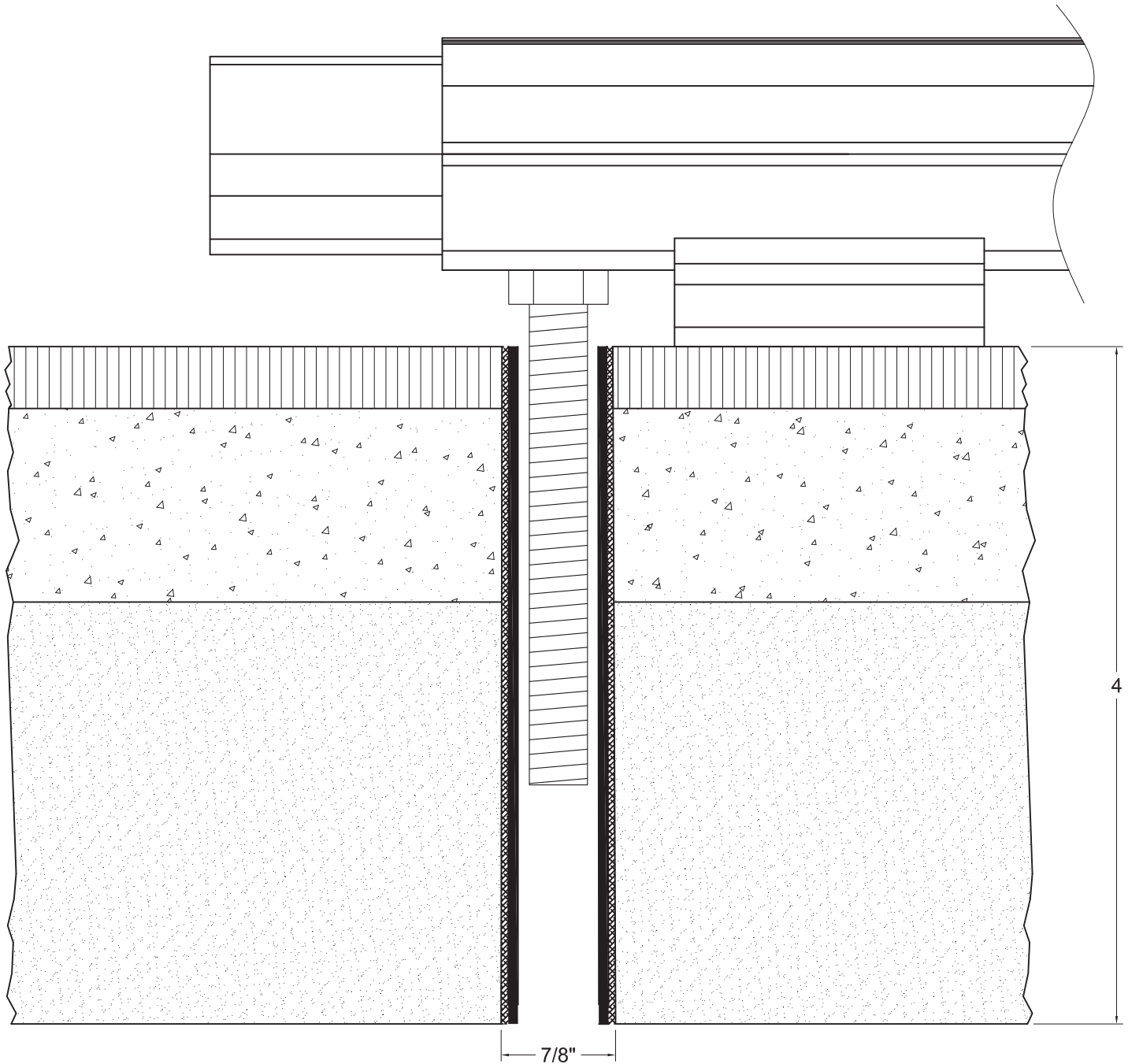




www.gillathletics.com
800-637-3090

851P - TRACK CURBING BASE PINS ANCHOR PIN INSTALLATION

PIN SLEEVE INSTALLATION



PIN SLEEVES

1. Completely lay out and assemble curbing per instructions and install pins where required.
2. Mark the points on the track where pins will rest.
3. At each of these marks, drill a vertical $\frac{7}{8}$ " hole to fit the sleeves completely through the track surface. The holes must be at least 4" deep.
4. Grout a sleeve in each hole flush with the track surface.
5. The bottom of the sleeve must remain open to the track aggregate base for drainage.

WARNING: Cancer and Reproductive Harm –
For more information go to www.p65warnings.ca.gov

suggestions@gillathletics.com
Copyright ©2018 by Gill Athletics. All rights reserved.

GILL ATH
01-17-18
851P_inst2



www.gillathletics.com
800-637-3090

851P - TRACK CURBING BASE PINS ANCHOR PIN INSTALLATION

