

### **INSTALLER NOTE:**

**UPON COMPLETION OF THE INSTALLATION/ ASSEMBLY OF THIS PORTABLE BACKSTOP,  
MAKE SURE THIS INSTRUCTION MANUAL IS IN POSSESSION OF THE OWNER OR  
FACILITY MANAGER, TO SAVE FOR FUTURE REFERENCE.**



www.porterathletic.com  
888-277-7778

## 1135 Portable Basketball Backstop Installation, Operation, and Maintenance Manual

Dear Customer:

Congratulations on purchasing the Porter No. 1135 Height-Adjustable Portable Basketball Backstop. This quality built backstop features the unique Porter Center-Strut design, height settings for all age groups, and effortless spring-assisted folding action.

This booklet is intended to be used for the initial set-up of your No. 1135 backstop, and as a guide for the safe use and maintenance of the backstop. **PLEASE READ THESE INSTRUCTIONS CAREFULLY AND COMPLETELY BEFORE BEGINNING THE SET-UP WORK, OR MAINTENANCE, OF THIS BACKSTOP.**

If, after reviewing this manual, you have any questions, please feel free to consult our factory.



Porter Athletic Equipment Company  
601 Mercury Drive, Champaign, IL U.S.A., 61822  
Phone: (888) 277-7778 • Fax: (217) 239-2255  
www.porterathletic.com

**TABLE OF CONTENTS**

<b>ITEM / DESCRIPTION</b>	<b>PAGE No.</b>
Parts List	4
Advisory Information	5 - 6
Assembly and Setup	6 - 19
- Install backboard, goal, swaybrace, and backboard padding	
- Remove shipping clamp and check folding operation	
- Move into playing position on court	
- Lower height adj. feet; plumb & level backboard and goal	
- Install tie-down knobs into floor anchors	
- Install frame padding	
Operating Procedures	20
Spring Adjustments	21 - 22
Maintenance	23
Guarantee	24
Appendices	25 - 26

### FRAME COMPONENTS

Item #	Part #	Quantity	Description
1	208	1	Glass Backboard
2	240180	1	Torq Flex Competition Goal
3	SWAY20000	1	Swaybrace With Hardware
4	FITG00270	1	Height Adjustment Feet with Wrench
5	HAN00110	2	Tie Down Knob
6	00326XXX	1	Backboard Padding
7	FITG00290	1	Pad Mounting Parts and Hardware

### PAD SET

Item #	Part #	Quantity	Description
7	PAD113501CXX	1	Upper Mast Pad
8	PAD113502CXX	1	Lower Mast Pad
9	PAD113503CXX	1	Front Filler Pad
10	PAD113504CXX	1	Base Side Pad; Left
11	PAD113505CXX	1	Base Side Pad; Right
12	PAD113506CXX	1	Ballast Cover
13	PAD113507CXX	1	Spring Cover
14	1134CXX	OPTIONAL	Boom Pad

### TOOLS REQUIRED:

9/16" Wrench

Step ladder

Portable Drill With Clutch Adjustment

11/16" Drill Bit

Tape Measure

Level

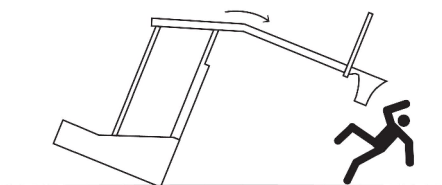
5/16" Socket (1/4" Drive)

10mm Allen Wrench

### SAFETY INSTRUCTIONS

- Read all instructions before use to avoid injury.
- Improper use of product can result in serious injury and/or property damage.
- Read all product safety labels.
- Keep this instruction manual for future reference.

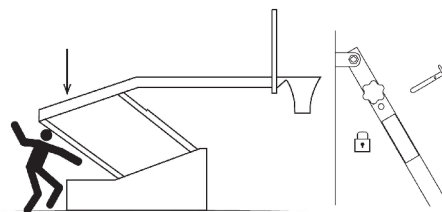
#### **WARNING**



- **Unit can tip over if overloaded resulting in severe injury or death.**

- Do not hang, sit, stand, or climb on the goal, backboard, or support structure at any time.
- Ensure the unit is properly anchored before every use. Securing the unit into floor anchors is required before every use and should be done whenever the unit is raised up out of the folded storage position.
- Do not roll the unit unless it is fully lowered in the storage position with the locking pin inserted.
- Ensure the unit is setup by properly trained personnel and used only under supervision. Inspect unit before every use.

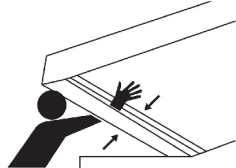
#### **WARNING**



- **Unit can collapse during use resulting in severe injury or death.**

- Ensure locking pin is fully engaged through the telescoping brace and locked with a padlock before every use.
- Ensure the unit is setup by properly trained personnel before every use.

#### **WARNING**



- **Moving parts of unit can crush or cut causing severe injury or death.**

- Keep body parts safely away from frame whenever raising or lowering unit. Stand to the sides of the unit when raising and lowering.
- Raise and lower the unit slowly and maintain control of the unit at all times.
- Ensure the unit is setup only by trained, adult personnel.

#### **WARNING**



- **Casters running over bodily parts can cause severe injury.**

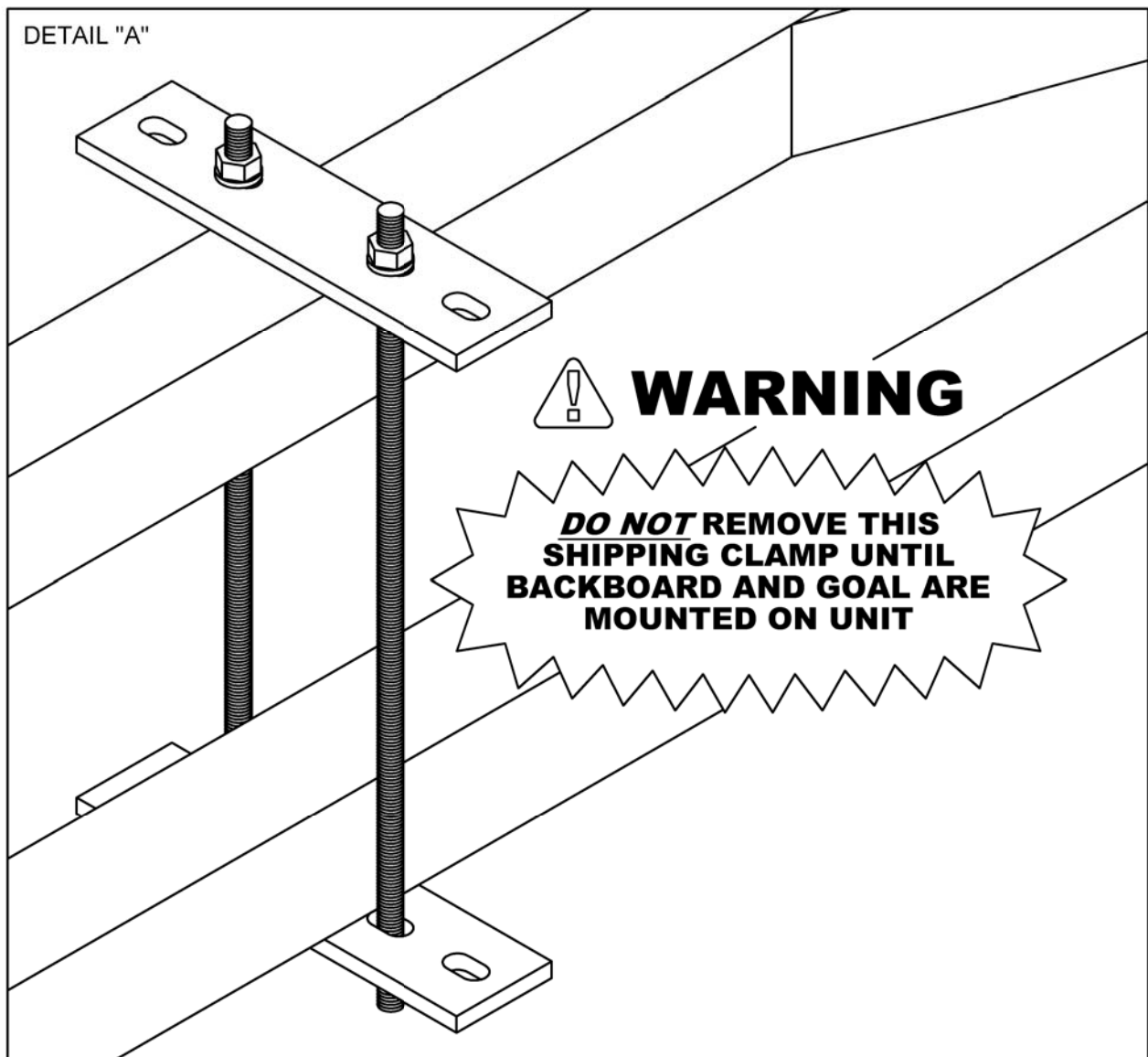
- Keep area in front of unit clear whenever unit is being moved.
- Unit is extremely heavy; move unit slowly and maintain control of the unit at all times.
- Unit should only be moved by trained, adult personnel.

- THE OWNER OF THIS EQUIPMENT IS RESPONSIBLE TO ENSURE THAT ALL INDIVIDUALS FOLLOW THESE SAFETY AND OPERATING INSTRUCTIONS TO AVOID INJURIES OR PROPERTY DAMAGE.

## ASSEMBLY AND SET-UP

### **WARNING**

THE SPRING-ACTIVATED MECHANISM ON THIS BACKSTOP MAY BE EXTREMELY DANGEROUS IF THESE ASSEMBLY INSTRUCTIONS AND OPERATING PROCEDURES ARE NOT FOLLOWED STEP-BY-STEP. **UNDER NO CIRCUMSTANCES SHOULD THE SHIPPING CLAMP (SEE DETAIL BELOW) BE REMOVED BEFORE THE BACKBOARD, GOAL, AND SWAYBRACES ARE ASSEMBLED TO THE BACKSTOP. FAILURE TO FOLLOW THIS PROCEDURE COULD RESULT IN PROPERTY DAMAGE, INJURIES, OR EVEN DEATH.** A MINIMUM OF THREE ADULTS (TO HOLD AND MOUNT BACKBOARD) ARE REQUIRED, FOR PROPER AND SAFE ASSEMBLY OF THIS BACKSTOP.



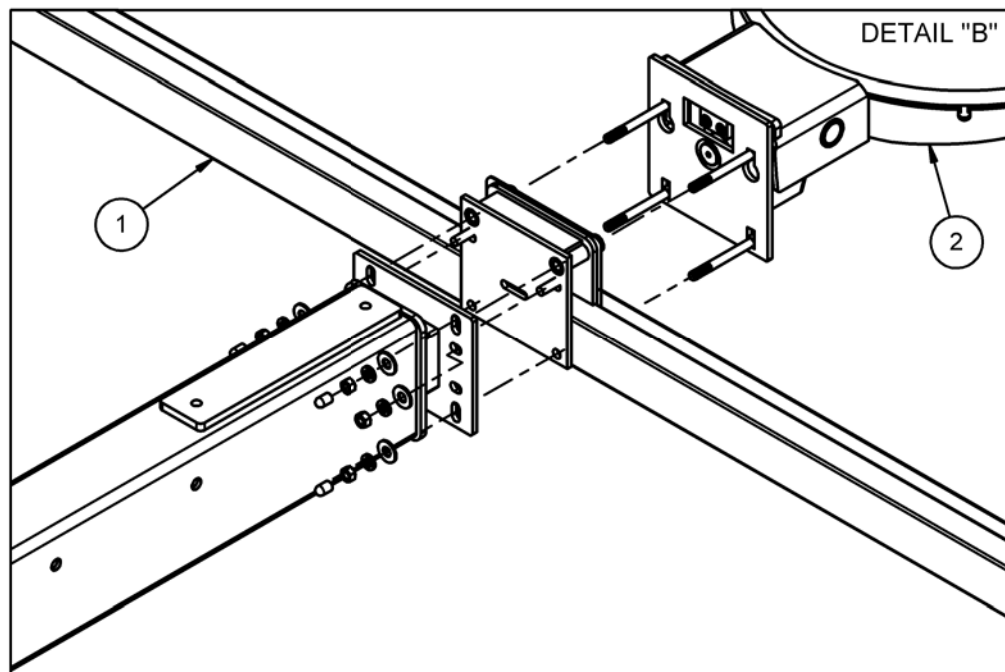
### NOTE

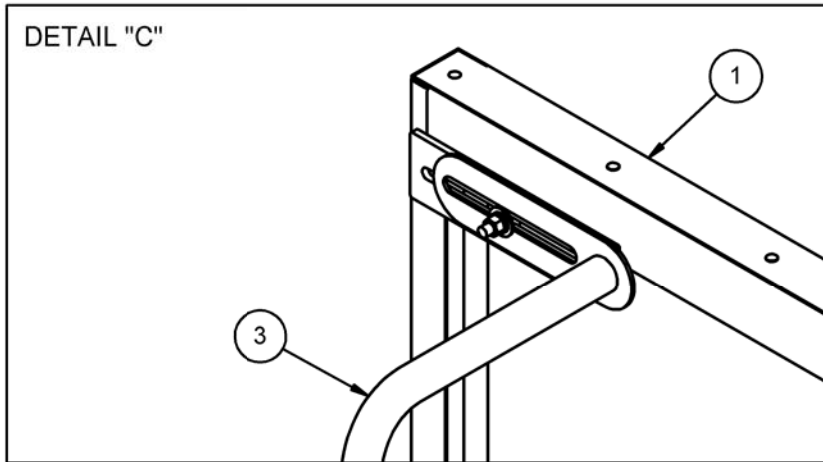
CAUTION - DURING ASSEMBLY OF THIS BACKSTOP, IT IS OF EXTREME IMPORTANCE THAT THE BACKBOARD IS NOT DROPPED, IMPROPERLY TORQUED (BOLTS TIGHTENED BEFORE PLUMBING ALL ATTACHMENT POINTS), OR THE GLASS SECTION BE ALLOWED TO CONTACT OR STRIKE METAL PARTS. THE WARRANTY DOES NOT COVER BREAKAGE DURING INSTALLATION.

1. Unpack and identify all parts (refer to Parts List on page 4).

#### **BACKBOARD ASSEMBLY:**

2. Position the unpacked glass backboard (#1) on its cardboard packing carton in front of portable backstop frame assembly (#4). Remove two 3/8" x 1-1/4" long carriage bolts, 3/8" flat washers, 3/8" lock washers, and 3/8" hex nuts from back of glass backboard.
3. It is recommended that at least three adults perform this step. Insert two 3/8" x 1-1/4" carriage bolts through the middle slot on either side of the backboard mounting plate. Carefully lift backboard (#1) and position so that middle backboard mounting slots are in alignment with the corresponding holes on the backstop mounting plate. See Detail "B".
4. While backboard is in this position, secure in place using two (2) 3/8" flat washers, 3/8" lock washers, and 3/8" hex nuts onto each 3/8" x 1-1/4" carriage bolt. Snug tighten only.





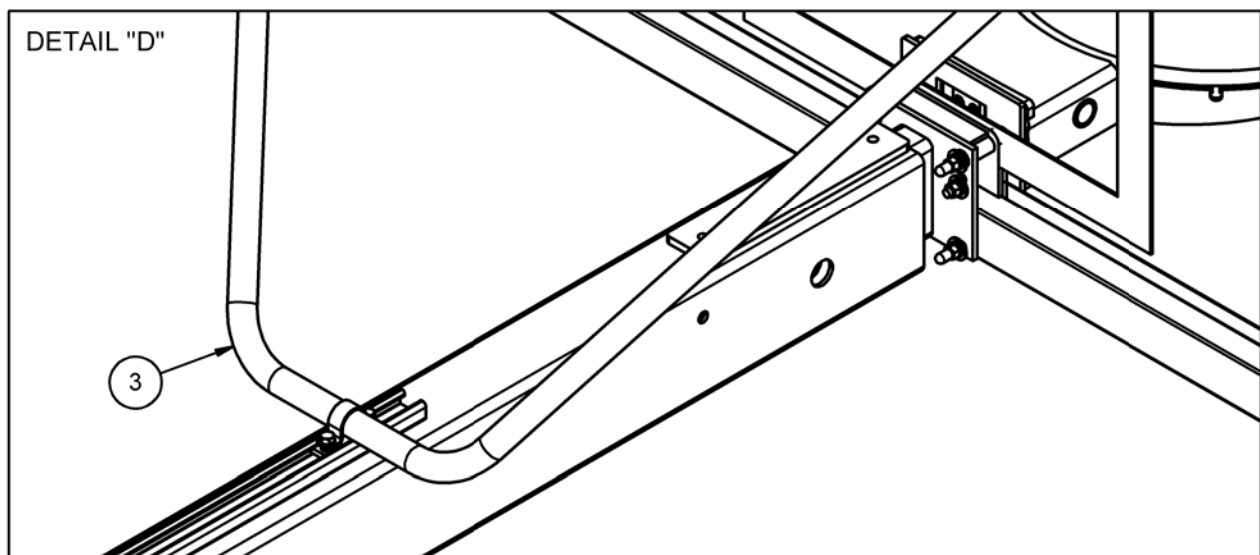
### **GOAL ASSEMBLY:**

5. You are now ready to mount the goal. Carefully hold the goal (#2) against the face plate of the backboard (#1) and insert the four (4) 3/8" x 3-1/2" lg. carriage bolts through the goal, backboard, and the backstop mounting plate (refer back to Detail "B"). Backboard may have to be shifted slightly for proper alignment. Secure with four (4) 3/8" flat washers, 3/8" lock washers, and 3/8" hex nuts on backside of mounting plate. Place rubber cap on back of each carriage bolt. See Detail "B".

### **SWAY BRACE ASSEMBLY:**

6. Attach the formed swaybrace (#3) into the slots in the upper corners of the glass backboard using two (2) 3/8" x 1-1/4" long carriage bolts, 3/8" flat washers, 3/8" lock washers, and 3/8" hex nuts. Finger tighten only (see Detail "C").

7. Attach back of swaybrace (#3) to the horizontal extension assembly (see Detail "D") using one (1) u-clamp, two (2) 3/8" lock washers, and two (2) 3/8"-16 unistrut nuts. Finger tighten only.





**Backboard Padding:**

8. Install backboard padding (#6) to the backboard frame per the installation instructions packed with the backboard padding.

**NOTE:**

**CHECK CASTER WHEELS FOR DEBRIS AS ANY DEBRIS  
ON WHEELS CAN CAUSE DAMAGE TO COURT FLOOR**

**ROLL UNIT INTO OPEN SPACE WITH MINIMUM 14' OF  
CLEARANCE TO CEILING**

**REMOVE SHIPPING CLAMP AT THIS TIME**

**Check Folding Cycle:**

9. Keeping all individuals clear from beneath the backstop (front and back), from the side carefully loosen threaded rods and remove shipping clamps.

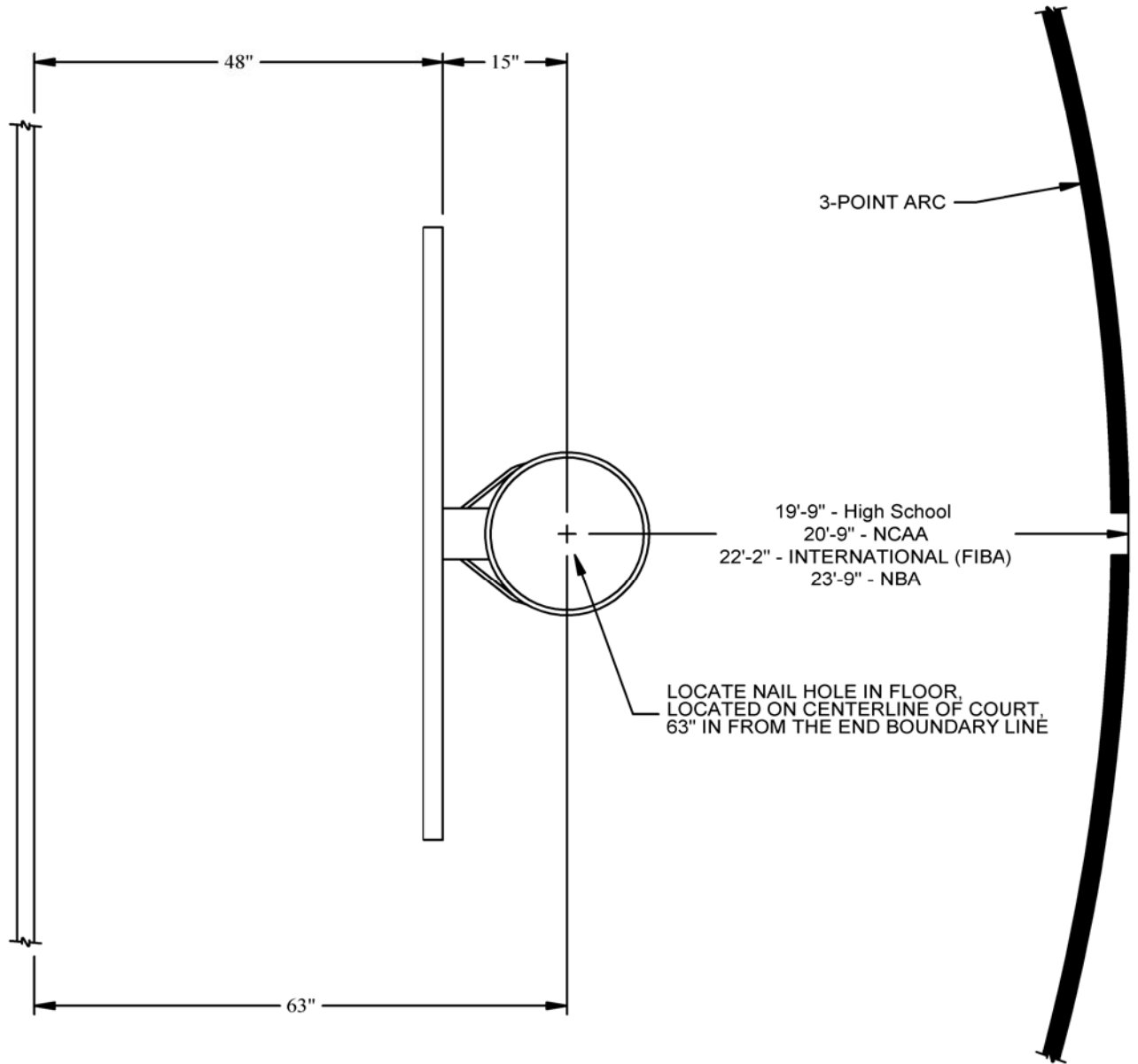
10. Remove the padlock and locking pin from the telescoping brace; also loosen the pressure lock handwheel. Keeping all individuals clear from beneath the backstop (front and back), stand to one side of the rear of the base. Grasp the handle on the rear vertical support and slowly lift backstop into playing position.

**CAUTION- WHEN RAISING THIS BACKSTOP INTO THE PLAYING POSITION, OR LOWERING THIS BACKSTOP INTO THE STORAGE POSITION, OPERATE BACKSTOP SLOWLY TO AVOID TIPPING OR DAMAGE TO THE STRUCTURE. OPERATE UNIT UP AND DOWN SEVERAL TIMES TO CHECK OPERATION. NEVER MOVE THE BACKSTOP FROM PLACE TO PLACE UNLESS THE BACKSTOP IS IN THE LOCKED-DOWN STORAGE POSITION!**

11. With the backstop locked in the down, folded, storage position, roll the backstop into the approximate playing position on the basketball court.

12. Raise the backstop to the playing position and align the face of the backboard parallel to and 4'-0" in from the inside edge of the 2" wide court line.

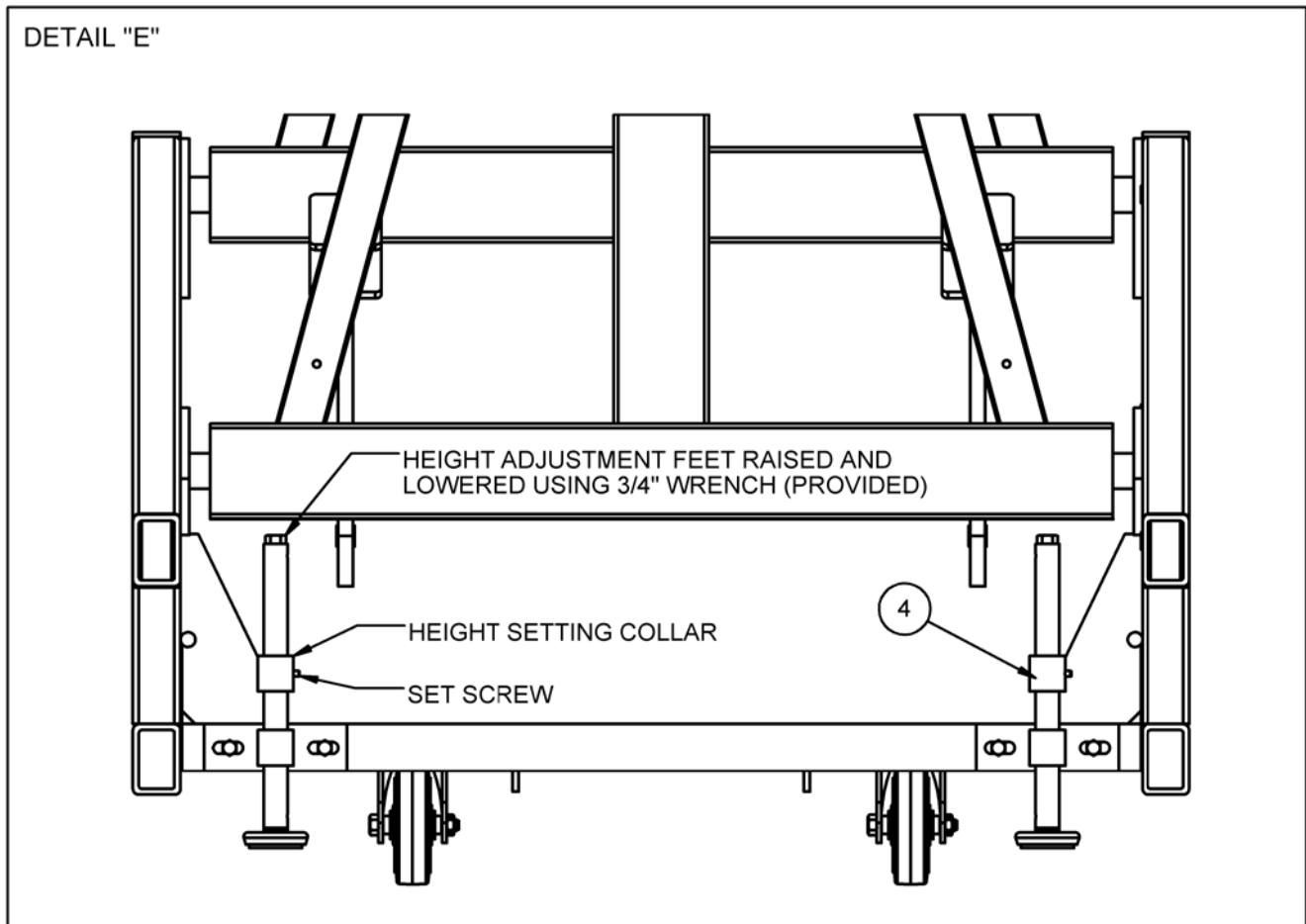
### LOCATING PORTABLE BACKSTOPS ON PLAYING FLOOR

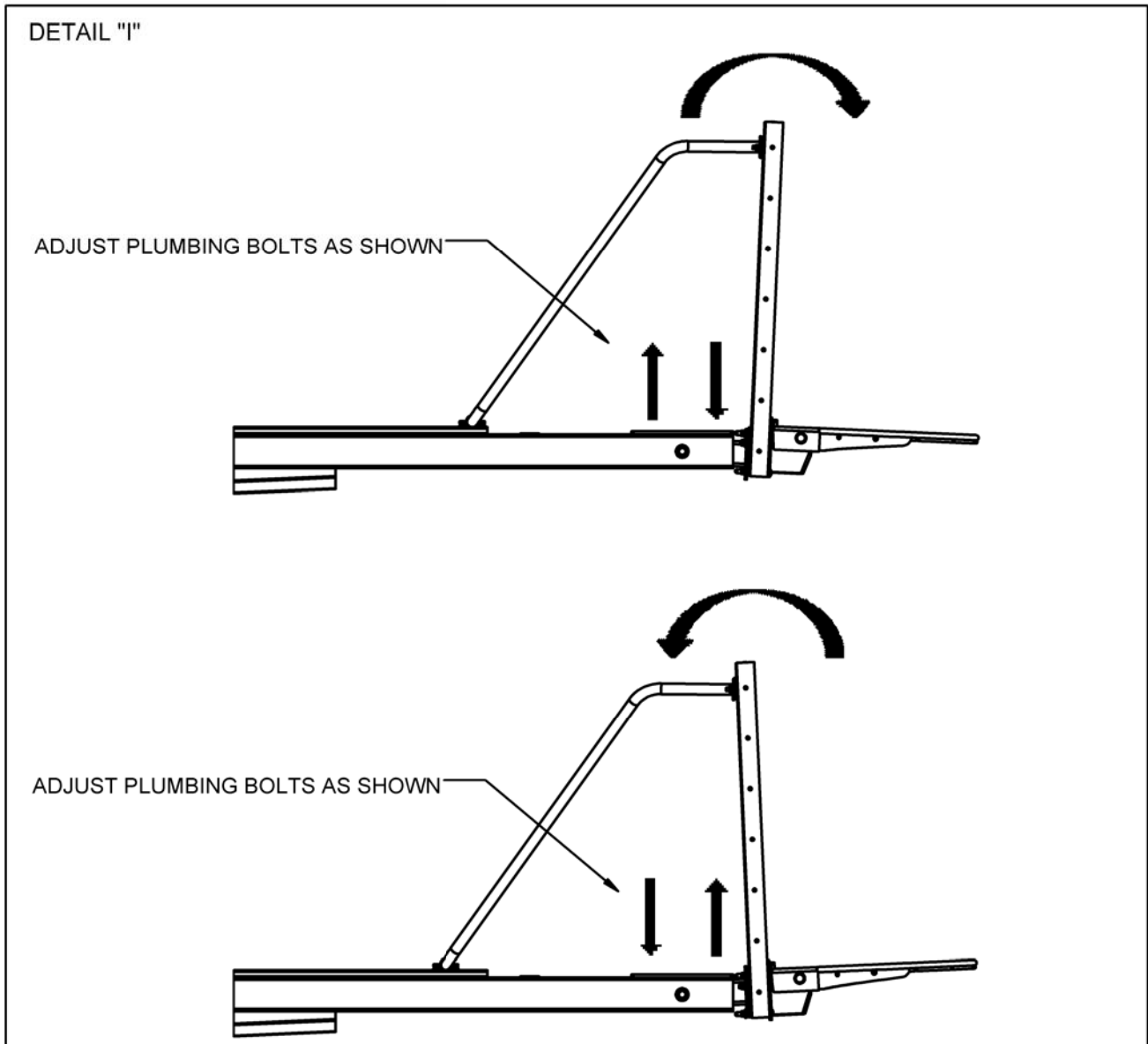


TO PROPERLY LOCATE A PORTABLE UNIT ON THE PLAYING FLOOR, DROP A PLUMB LINE FROM THE EXACT CENTER OF THE GOAL AND POSITION UNIT TO ALIGN WITH NAIL HOLE ON FLOOR. SHIFT BASE FROM SIDE TO SIDE AS REQUIRED TO CENTER ON COURT.

### Lower Height Adjustment Feet:

13. Loosen the set screw holding the height setting collar in place; refer to Detail "E" below. Using the provided 3/4" ratcheting wrench, lower the height adjustment feet equally until the goal is at a height of 10'-0" from the playing surface.

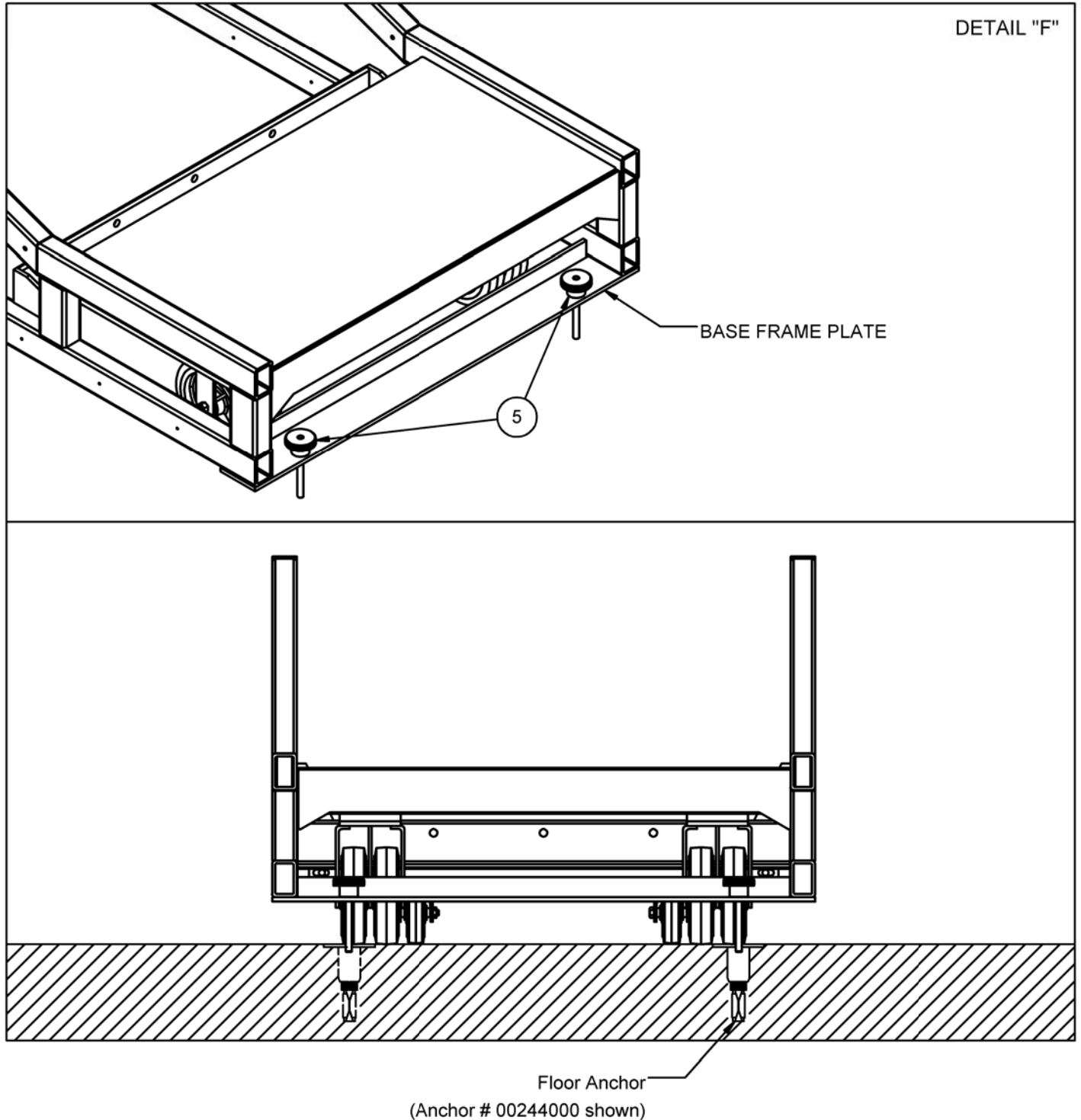


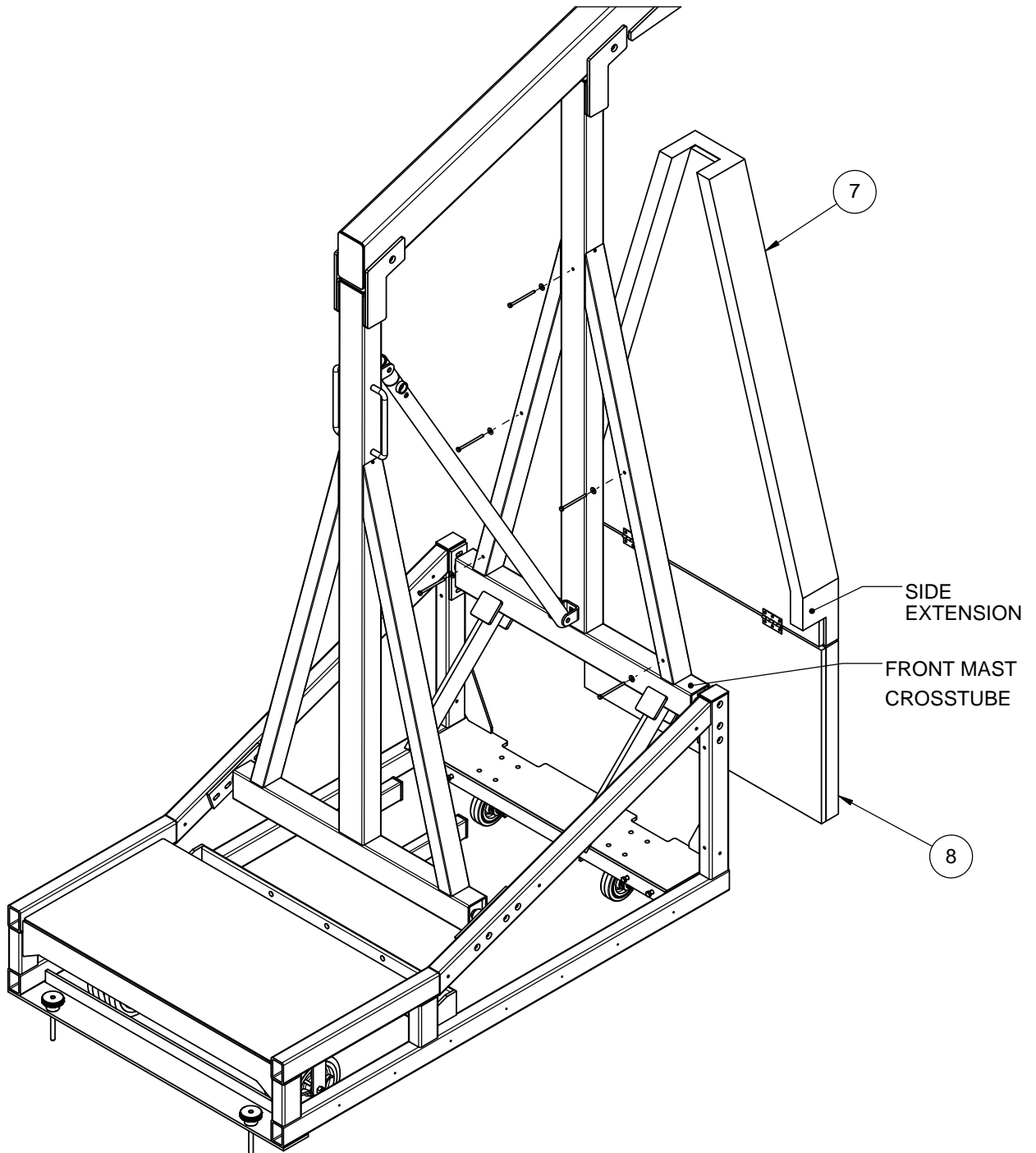


#### **14. BACKBOARD PLUMB-ADJUSTMENT:**

With the unit in the 10' raised position and with the swaybrace hardware loosened, the backboard can be tilted forward and backboard by adjusting the two (2) 1/2"-13 hex head bolts (plumbing bolts) that are located just behind the backboard in the horizontal extension arm. Place a level on the front face of the backboard and adjust the backboard into plumb. Next, place the level across the top of the backboard and level the backboard. Repeat process to level and plumb the goal. Recheck the goal height for 10' and adjust height adjustment feet as-needed. Adjusting height adjustment feet and plumbing the backboard may need to be done multiple times before the goal is at 10' and the backboard is plumb. Once set properly, tighten down all hardware for the swaybrace, backboard, and goal. The height setting collar on the height adjustment feet should be lowered and the set screw tightened so that the unit is always raised to the same height (when the height setting collar bottoms out and the height setting feet can no longer be lowered, you know the unit is at the correct height).

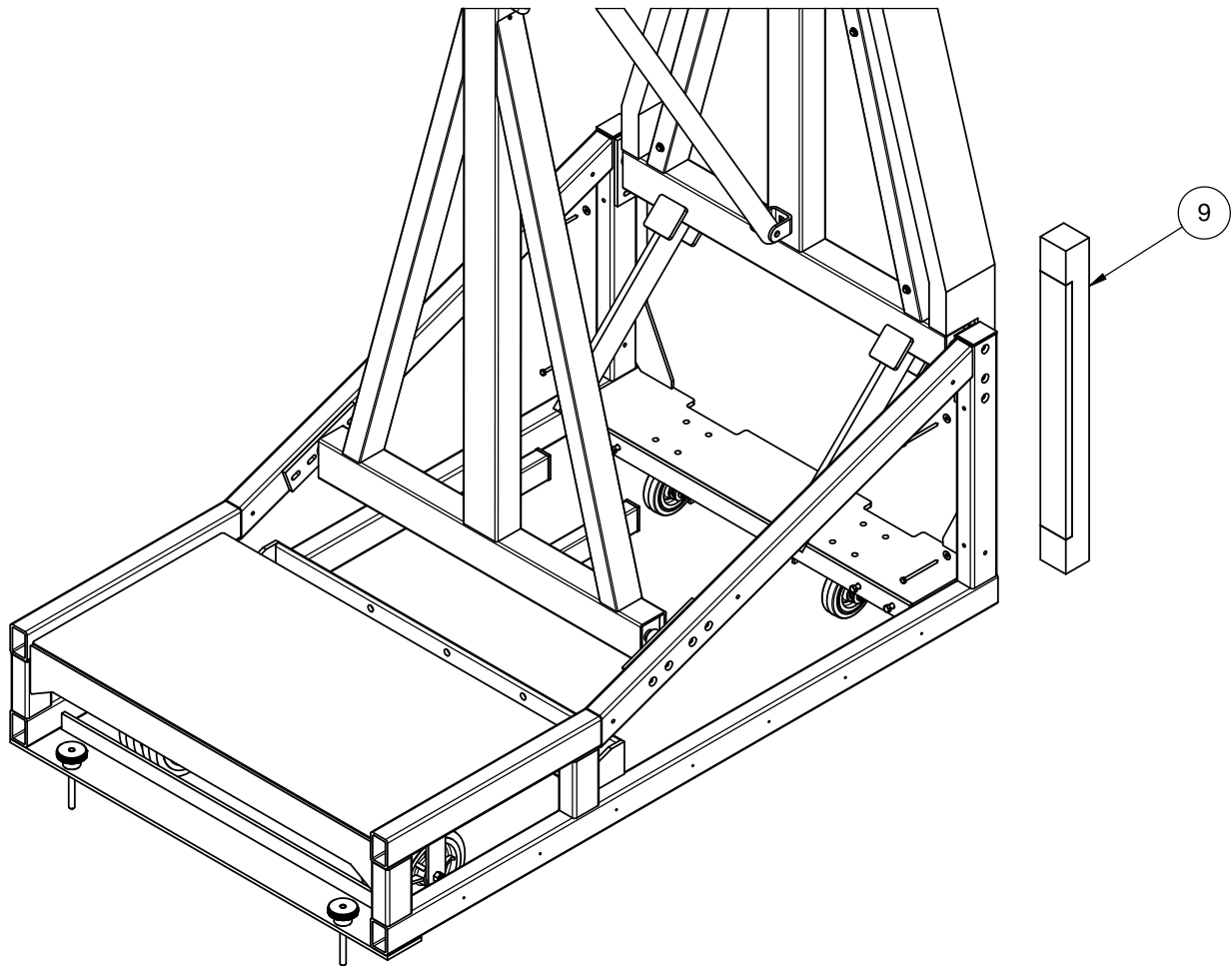
15. Before use of the portable backstop, ensure the tie down knobs (#5) are engaged in the floor anchors (see Detail "F"). Position the portable such that the thru holes at the back of the base frame line up with the floor anchors in the playing surface. Place tie down knob through the base frame plate and thread into the floor anchor until the handle of the tie down knob is snug against the base frame plate; do not overtighten.





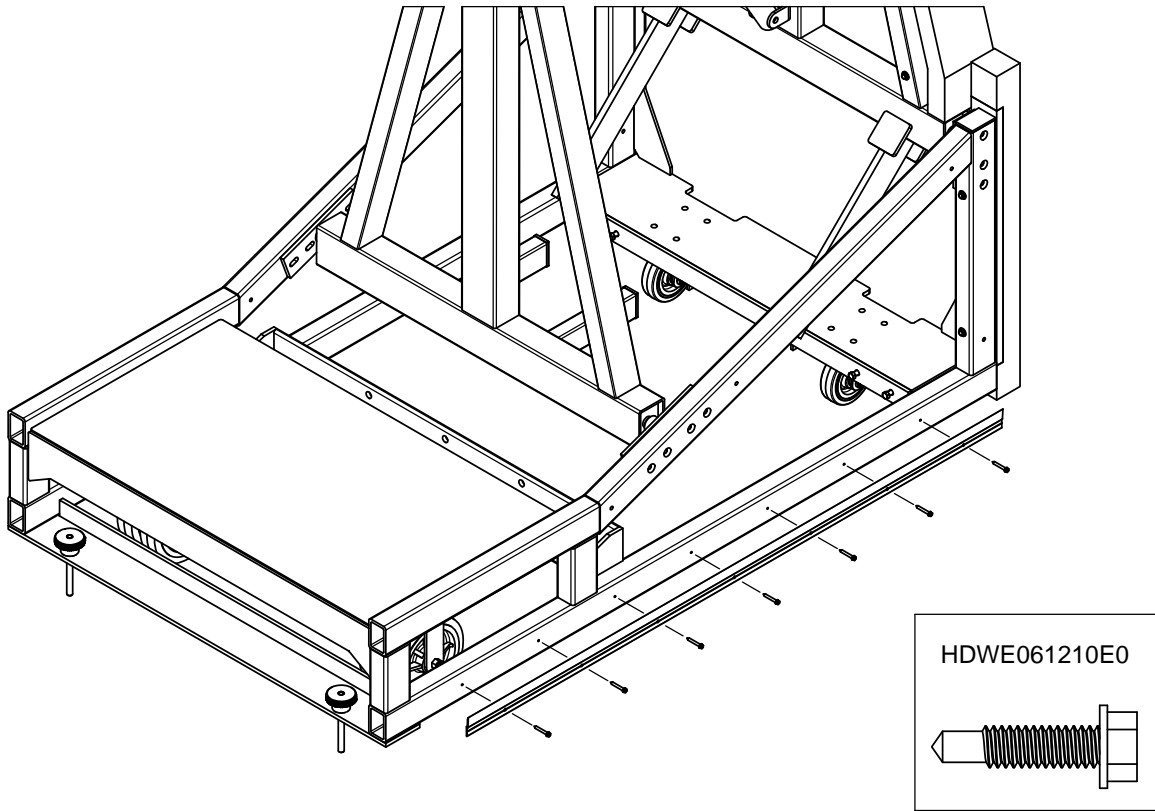
### **Front Padding:**

Set the front padding assembly onto the front mast by resting the side extensions of the front mast pad onto the front mast cross-tube; setting the goal height to the 8' or 9' setting can assist in this process. Attach the front mast pad to the front mast using four (4) 1/4" x 4" long lag screws and 1/4" flatwashers provided.



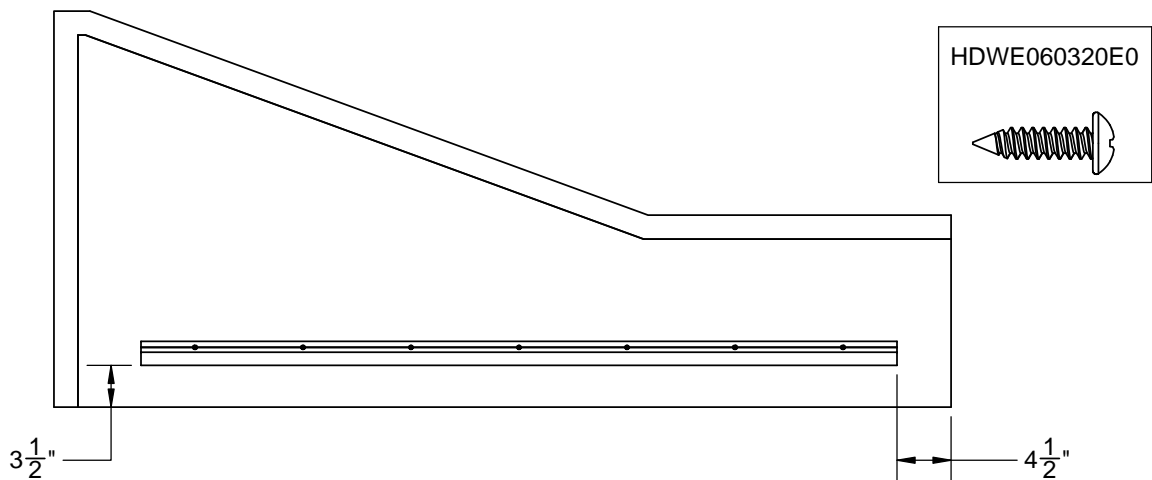
### **Filler Pads:**

Attach each of the filler pads to the base frame using two (2) 1/4" x 4" long lag screws and 1/4" flatwashers provided. Determine the height of these pads by raising the goal to the 10' playing position and lining up the bottom face of the filler pads with the bottom face of the lower front pad.

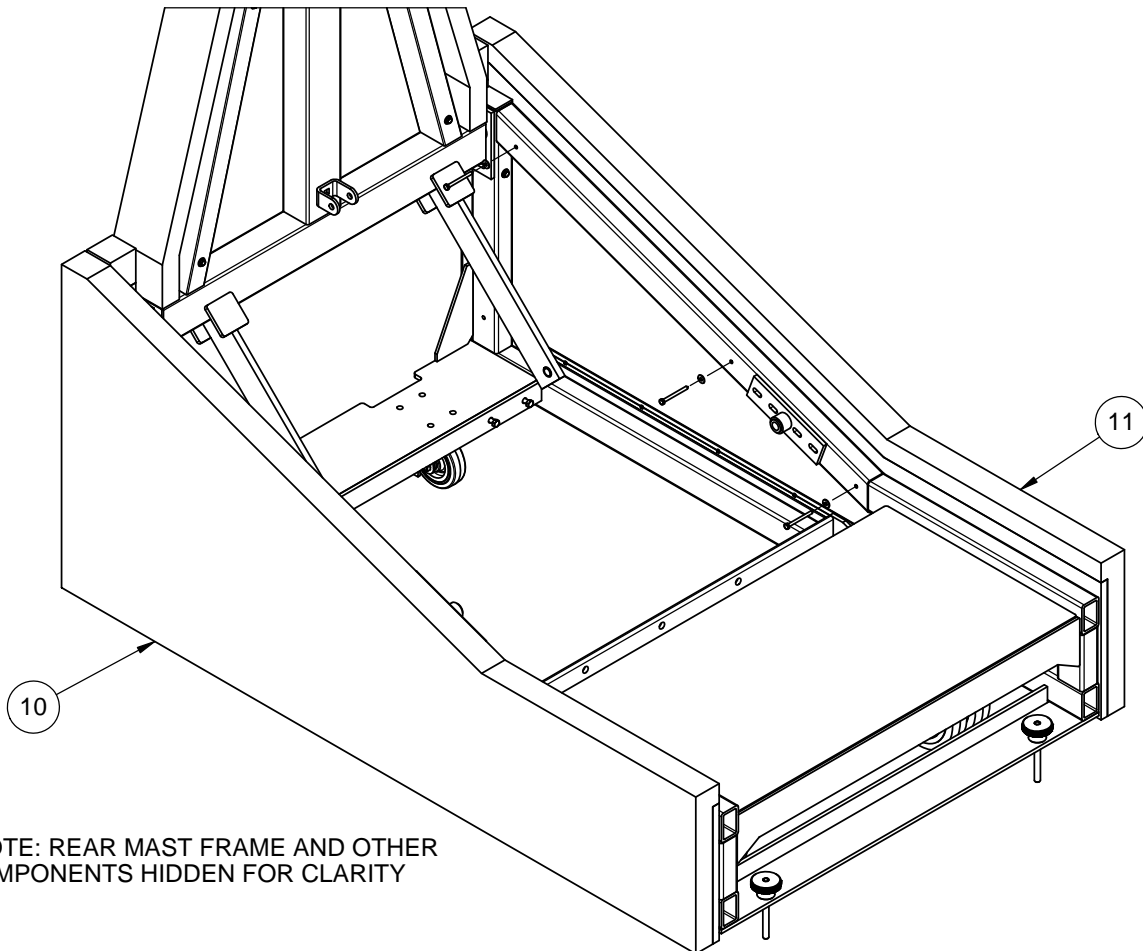


### **Base Side Pads:**

Start by attaching the z-strips to the sides of the base frame using seven (7) #12 x 7/8" long self drilling, self-tapping screws provided. The base frame is pre-drilled for ease of installation. Next, install a matching z-strip onto the base side pads using seven (7) #8 x 5/8" long pan head screws provided. Determine the height of the z-strips to align the bottom face of the side pads with the bottom face of the front pads; approximate measurements are shown below.

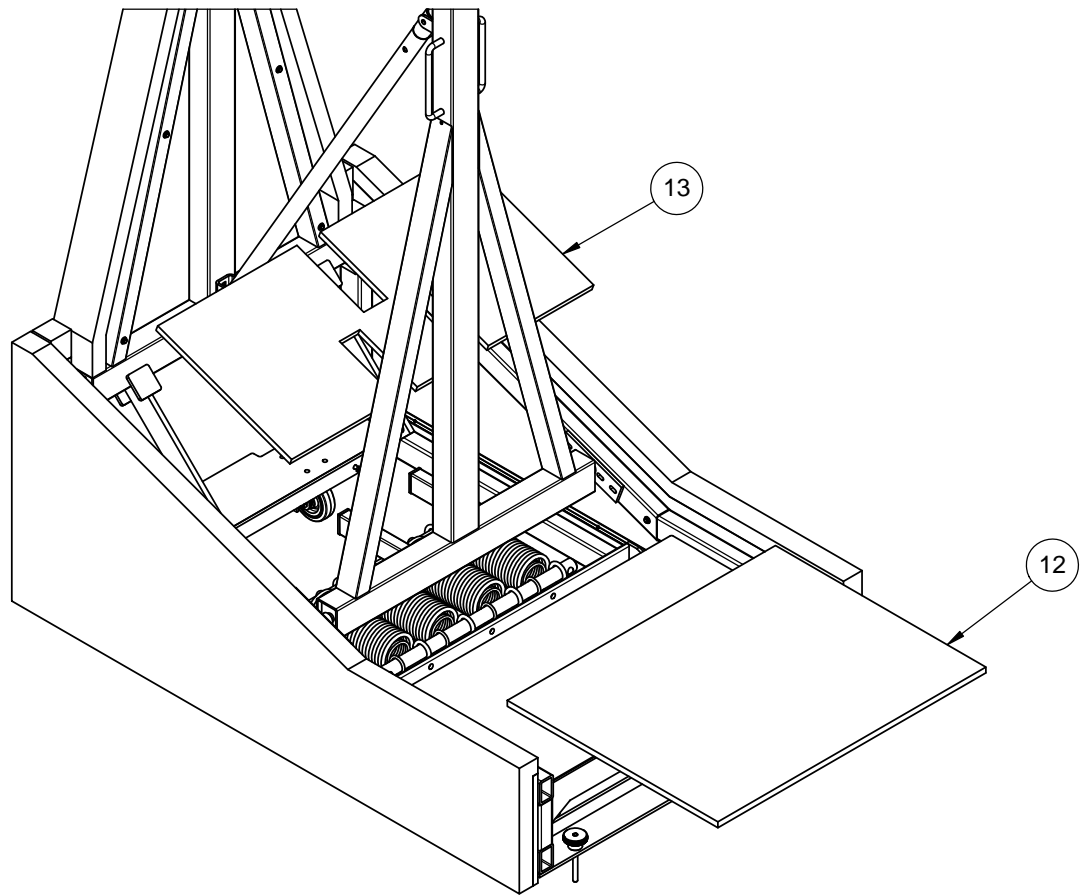






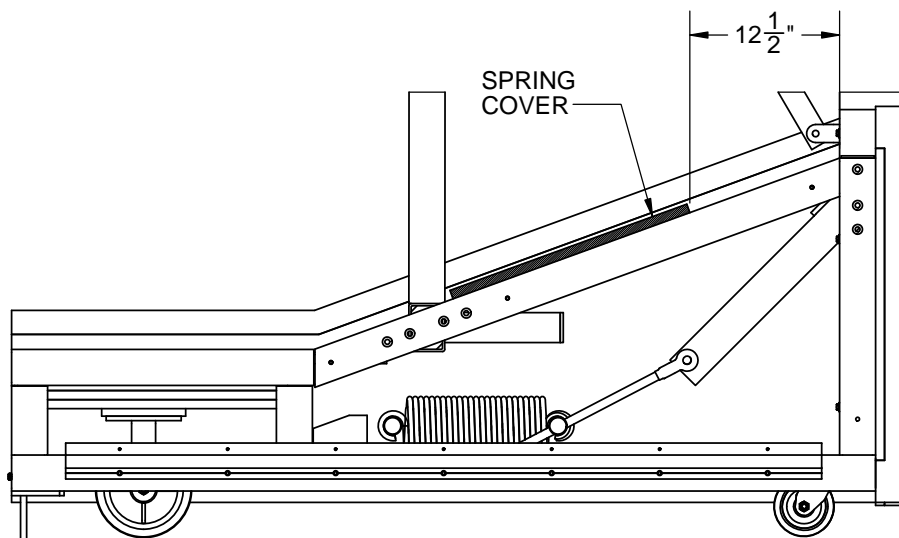
### **Base Side Pads (continued):**

Mount the base side pads onto the base frame by raising the pad above the base-mounted z-strip and lowering the pad until the z-strip of the pad and base frame interlink. Secure the top of the base side pads using three (3) 1/4" x 3" long lag screws and 1/4" flatwashers provided.



### **Ballast and Spring Covers:**

Mount the ballast cover to the top ballast plate using the Velcro<sup>®</sup> strips provided; the back edge of the ballast cover should be flush with the rear face of the base frame. Mount the spring cover on the side rails of the base frame as shown below using the Velcro<sup>®</sup> strips provided. After installing the spring cover, slowly lower and raise the unit to verify the spring cover is not placed in a position that interferes with the articulation of backstop.



## FINAL INSPECTION

Touch up any scratches that may have occurred during shipping or assembly with touch up paint

IMPORTANT – UPON FINAL SET-UP OF THIS BACKSTOP, SHOW THE INDIVIDUAL(S) WHO WILL OPERATE THIS BACKSTOP HOW TO PROPERLY OPERATE THIS BACKSTOP. READ THE WARNING LABELS TO THEM, EXPLAINING THE IMPORTANCE OF FOLLOWING SAFE OPERATING PROCEDURES. THIS INSTRUCTION MANUAL MUST BE GIVEN TO AN OFFICIAL IN CHARGE OF THE FACILITY FOR FUTURE REFERENCE.

THIS BACKSTOP MUST BE OPERATED ONLY BY AUTHORIZED PERSONNEL FAMILIAR WITH THE SAFE OPERATING INSTRUCTIONS AND PROCEDURES. THIS EQUIPMENT SHOULD BE INSPECTED BEFORE EACH USE FOR WEAR, LOOSE FITTINGS, DAMAGE AND PROPER STABILITY. CONSULT A TRAINED SERVICE TECHNICIAN OR THE FACTORY WHEN IN DOUBT.

### **WARNING**

SINCE THE FOLDING ACTION OF THIS BACKSTOP IS SPRING-ASSISTED, A POTENTIAL HAZARD EXISTS IF PROPER SAFETY PRECAUTIONS ARE NOT FOLLOWED. WHEN REMOVING OR REPLACING THE BACKBOARD ON THIS BACKSTOP, THE TELESCOPING BRACE / THRU PIN MUST BE LOCKED IN POSITION, TO PREVENT THE BACKSTOP FROM SUDDENLY SPRINGING TO THE UP POSITION, WHICH COULD RESULT IN SEVERE INJURIES, OR EVEN DEATH. CONSULT FACTORY WHEN IN DOUBT.

## OPERATING PROCEDURES

### TO RAISE BACKSTOP TO PLAYING POSITION

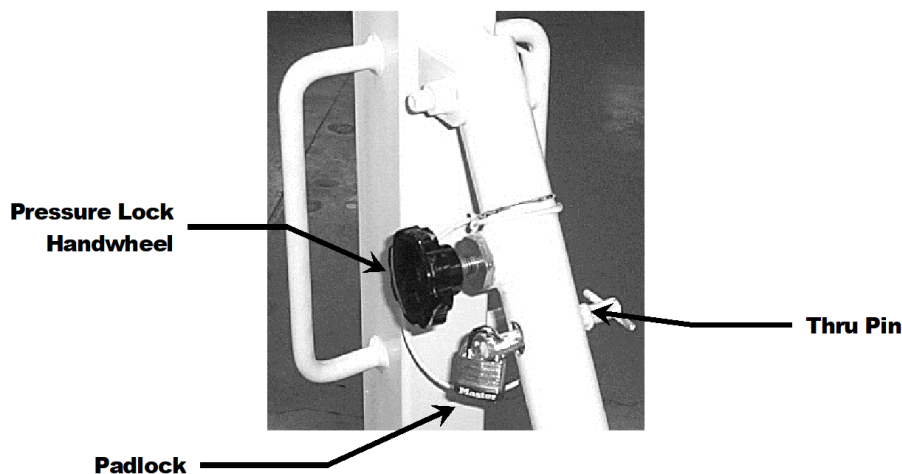
1. Roll to the playing position while backstop is in the folded and locked position.
2. Lower front leveling feet to lock backstop in place.
3. Loosen (turn counterclockwise) the pressure lock handwheel on the telescoping height adjustment brace.
4. Remove the padlock and thru pin in the telescoping height adjustment brace tube.
5. Clear all individuals from the floor area around the backstop. Stand to one side of the backstop, grasp handle on rear mast, then carefully and slowly lift upward on handle located near rear of backstop.
6. Slowly raise or push backstop to desired goal height setting (8', 9', or 10')
7. Replace thru pin and padlock.
8. Tighten handwheel in telescoping brace securely.
9. Install tie-down hand knobs into floor anchors

### TO LOWER BACKSTOP FOR TRANSPORT/ STORAGE

1. Remove tie-down hand knobs.
2. Loosen (turn counterclockwise) the pressure lock handwheel on the telescoping height adjustment brace.
3. Remove the padlock, and while grasping the side handle on the rear vertical support, remove the thru pin from the telescoping brace.
4. Stand to one side, grasp handle on rear mast, and slowly lower the backstop to the lowest down or storage position.
5. Replace thru pin and padlock in telescoping brace.
6. Tighten handwheel in telescoping brace securely.
7. Raise front leveling feet
8. Roll backstop to the storage location

## IMPORTANT

ALWAYS KEEP PADLOCK IN THE LOCKED POSITION ON THE TELESCOPING HEIGHT ADJUSTMENT BRACE WHILE IN THE PLAYING OR STORAGE POSITIONS, TO PREVENT USE OF THIS BACKSTOP BY UNAUTHORIZED INDIVIDUALS, WHO ARE NOT FAMILIAR WITH THE SAFE OPERATION OF THE BACKSTOP.

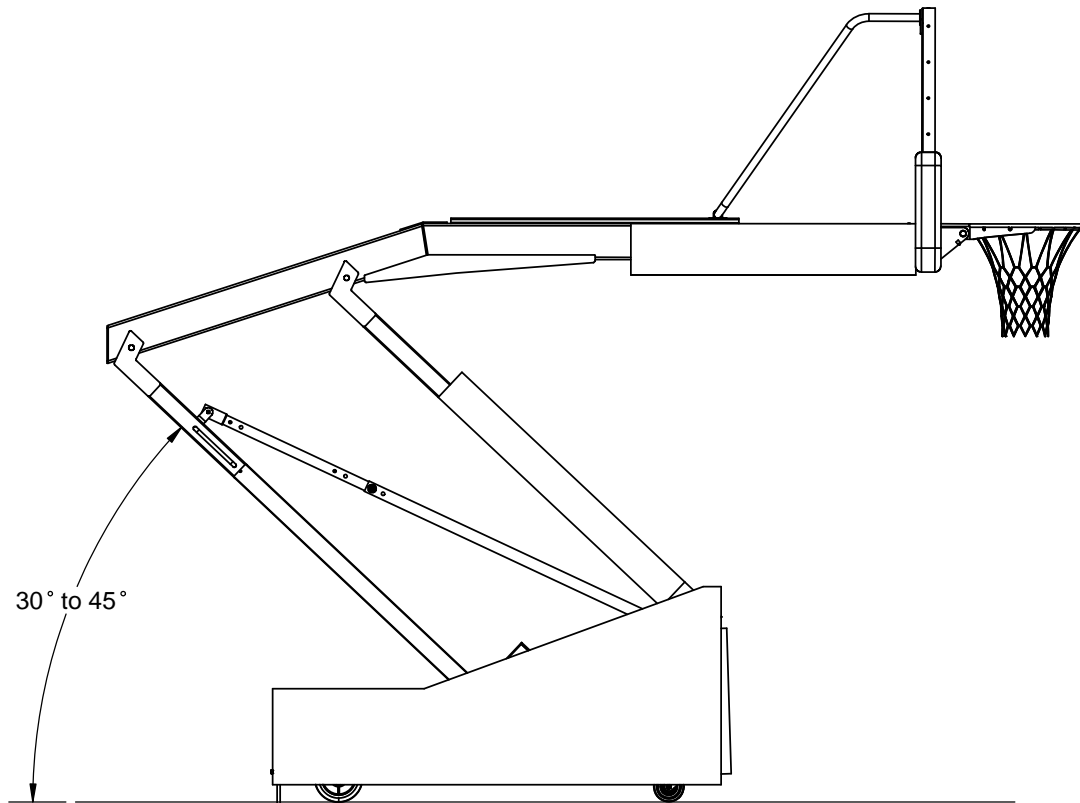


### ADJUSTMENT OF SPRING-LOADED MECHANISM FOR EASE OF RAISING AND LOWERING BACKBOARD

The tension springs on this backstop have been pre-adjusted at the factory for proper raising and lowering of the backboard. However, should it be necessary to adjust the springs after years of use, or with the addition of a shot clock, the following adjustment procedures should be followed. As a safety precaution, it is advisable to check operation of backstop with two individuals (one standing on each side of the backstop) in the event of unexpected movement, or undue forces exerted by the backstop support mechanism. Refer to detail on page 16 for adjustment of tension springs.

**WARNING** – When making adjustment, the backstop must be in the up and locked position. Do not turn the adjustment nuts (C) more than two turns before trying operation of backstop, to avoid erratic or sudden movement, which may result in bodily injury or damage to the backstop. When checking folding action, keep all individuals clear of backstop and stand to one side while grasping handle.

Spring setting – For proper operation of this backstop, it is highly recommended that the spring tension be adjusted so backstop will be held in a static position with the vertical supports at an approximate 30° to 45° angle from the horizontal position. See detail below.



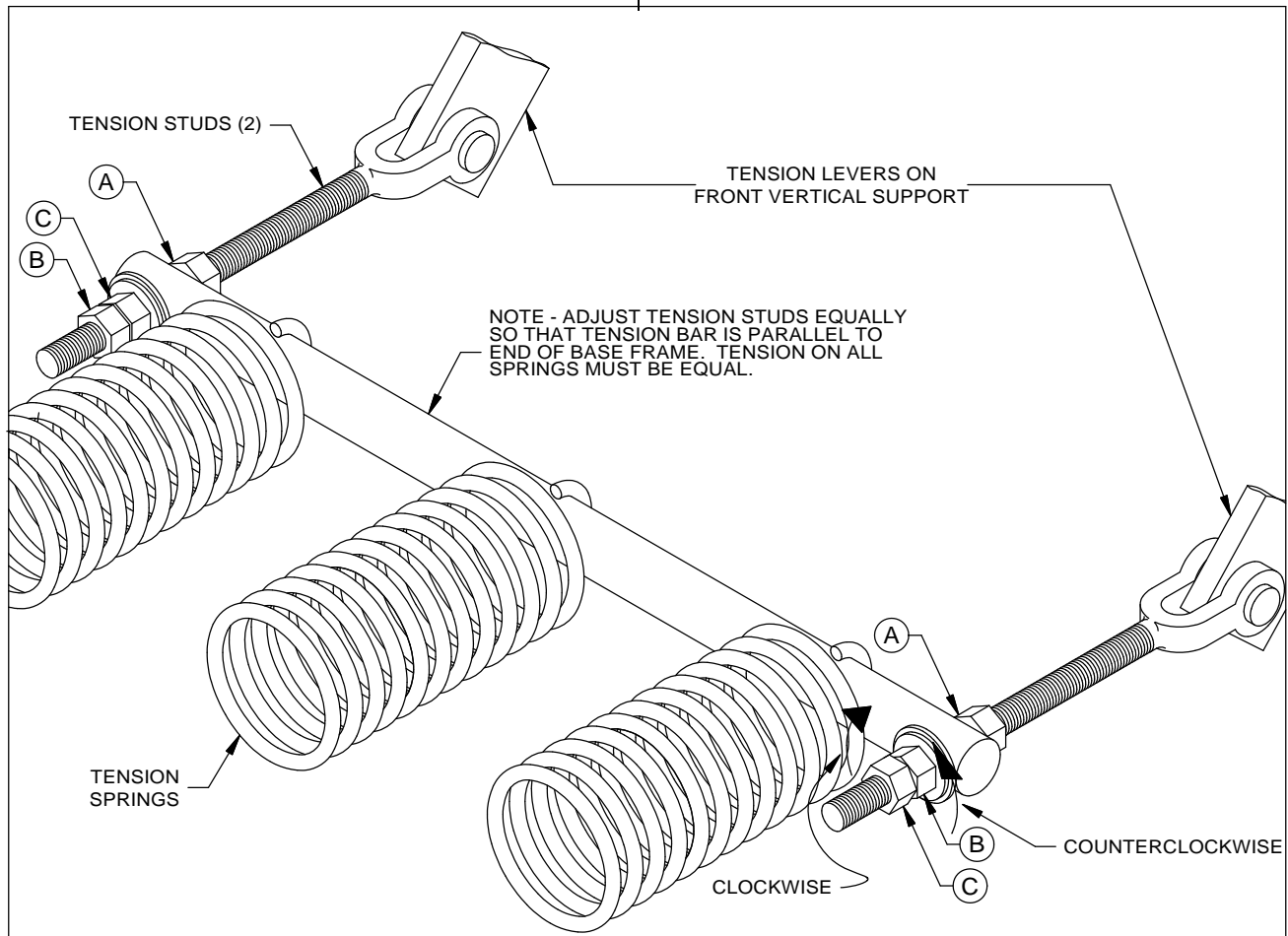
For proper operation, the backstop must be manually pushed to the full up (playing) position, or the full down (storage) position. Operate backstop slowly to prevent damage or injury.

### DIFFICULTY IN RAISING BACKSTOP TO THE PLAYING POSITION (REFER TO DETAIL BELOW)

1. Loosen (turn clockwise) the two jam nuts (A) approximately six turns.
2. Loosen (turn counterclockwise) the two jam nuts (B) approximately one turn.
3. Loosen (turn clockwise) the two jam nuts (C) no more than two turns.
4. Carefully raise backstop to the playing position and check static position (refer to Detail "I" on page 17). Should it be necessary to tighten springs further, carefully raise backstop and lock it in the up position before proceeding.
5. Repeat steps No. 3 & 4 above until folding action of backstop functions properly.
6. Re-tighten jam nuts (A & B) securely to lock jam nut (C) in position after final adjustment has been made.

### DIFFICULTY IN LOWERING BACKSTOP TO THE TRANSPORT / STORAGE POSITION (REFER TO DETAIL BELOW)

1. Loosen (turn clockwise) the two jam nuts (A) approximately one turn.
2. Loosen (turn counterclockwise) the two jam nuts (B) approximately six turns.
3. Loosen (turn clockwise) the two jam nuts (C) no more than two turns.
4. Carefully raise and lower backstop and check static position (refer to Detail "I" on page 17). Should it be necessary to loosen springs further, carefully raise backstop and lock it in the up position before proceeding.
5. Repeat steps No. 3 & 4 above until folding action of backstop functions properly.
6. Re-tighten jam nuts (A & B) securely to lock jam nut (C) in position after final adjustment has been made.



## MAINTENANCE CHECKLIST

Perform a complete inspection of this portable backstop at least quarterly (every 3 months).

- Check entire backstop for structural integrity. Examine welds for soundness. Inspect all fittings and hardware - replace as required.
- Check all padding on portable backstop and on backboard.
- Check that tie down knobs and floor anchors are functioning properly and structurally sound.
- If a shot clock is installed, check that all hardware is properly tightened and support structure is structurally sound.

## GUARANTEE


All materials and workmanship of basic materials are guaranteed to be free and clear of defects. Defective material will be repaired or replaced, at our option, subsequent to complete information being received by us concerning the nature of the defect, for a period of one year from the date of completion of the assembly/installation.

NAME OF DEALER:	NAME OF INSTALLATION COMPANY
PHONE #:	PHONE #:

Porter Order Number: \_\_\_\_\_

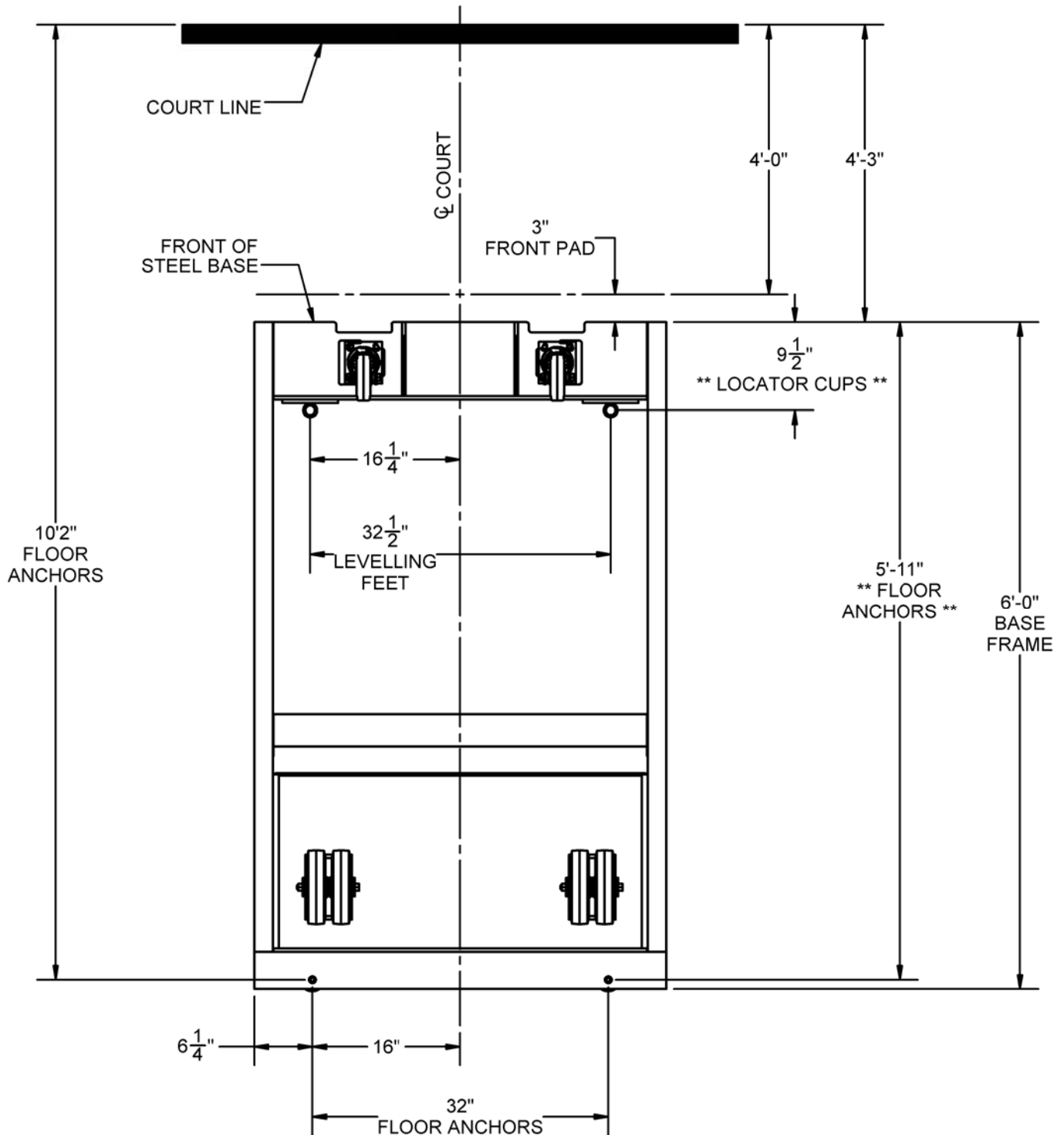
Date of Completion: \_\_\_\_\_

Care has been taken to fabricate and install this equipment to provide years of safe, satisfactory use and trouble-free service. The key to satisfactory service from this equipment is proper operation and care. Should any malfunctions occur, please notify your supervisor and call your local Porter Dealer or Representative.

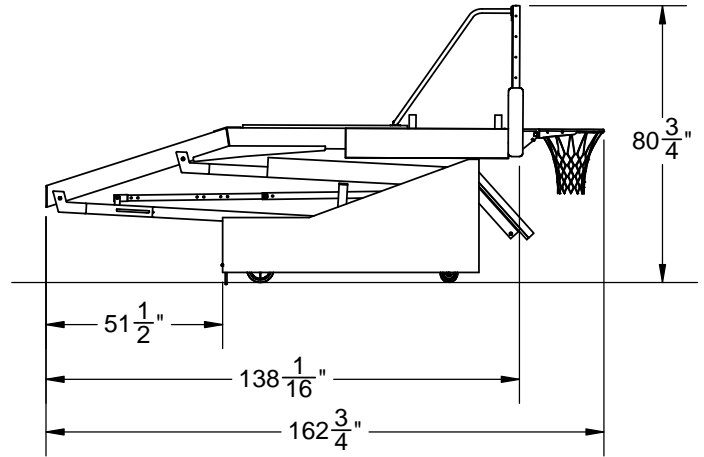
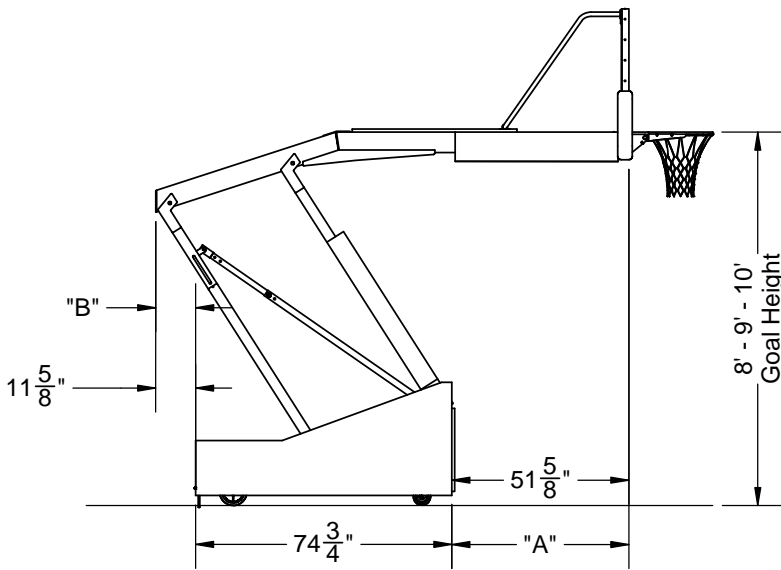
 **WARNING:** This product can expose you to Urethane, which is known to the State of California to cause cancer and birth defects or other reproductive harm. For more information go to [www.p65warnings.ca.gov](http://www.p65warnings.ca.gov).

A





**\*\* NOTE \*\*:** IT IS RECOMMENDED THAT HOLES FOR THE FLOOR ANCHORS AND HOLES FOR THE LOCATOR CUPS (IF APPLICABLE) NOT BE DRILLED UNTIL THEIR LOCATIONS CAN BE VERIFIED WITH THE UNIT IN THE FINAL PLAYING LOCATION ON THE COURT. WITH THE UNIT IN POSITION, MARK THE HOLE LOCATIONS, ROLE THE UNIT TO THE SIDE, THEN DRILL INTO THE COURT.



GOAL HEIGHT SETTING			
	10'	9'	8'
A	8'	4'-3 1/2"	3'-11 1/2"
B	N/A	11-3/4"	2'-3 1/2"

