



Certificate of Analysis

Sample: KN20617005-003
Harvest/Lot ID: P-HAR-052622-0001
Batch#: P-HAR-052622
Seed to Sale# N/A
Batch Date: 05/26/22
Sample Size Received: 30 ml
Total Batch Size: N/A
Retail Product Size: 30 ml
Ordered : 06/13/22
Sampled : 06/13/22
Completed: 06/22/22
Sampling Method: N/A

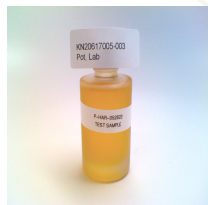
PASSED

Page 1 of 1

Jun 22, 2022 | UrbanXtracts

43 John Hicks Drive
Warwick, NY, 10990, US

PRODUCT IMAGE



30ml Bottle

SAFETY RESULTS

 Pesticides NOT TESTED	 Heavy Metals NOT TESTED	 Microbials NOT TESTED	 Mycotoxins NOT TESTED	 Residuals Solvents NOT TESTED	 FiltH NOT TESTED	 Water Activity NOT TESTED	 Moisture NOT TESTED	 Terpenes NOT TESTED
---	---	---	---	---	---	---	---	---

MISC.

Cannabinoid **PASSED**



	TOTAL CAN NABINOIDS	CBDV	CBDA	CBGA	CBG	CBD	THCV	CBN	EXO-THC	D9-THC	D8-THC	D10-THC	CBC	THCA	D8-THCO	D9-THCO	THC-O
%	3.5776	0.016	<0.01	ND	0.0447	3.3922	<0.01	<0.01	ND	0.086	ND	ND	0.0387	<0.01	ND	ND	ND
mg/ml	35.776	0.16	<0.1	ND	0.447	33.922	<0.1	<0.1	ND	0.86	ND	ND	0.387	<0.1	ND	ND	ND
LOD	0.001	0.001	0.001	0.001	0.001	0.001	0.001	0.001	0.002	0.001	0.001	0.001	0.001	0.001	0.002	0.002	0.002
%		%	%	%	%	%	%	%	%	%	%	%	%	%	%	%	%

Analyzed by: 113, 1 Weight: 0.2272g Extraction date: 06/20/22 10:27:16 Extracted by: 113

Analysis Method : Expanded Measurement of Uncertainty: Flower Matrix d9-THC:12.7%, THCA: 9.5%, TOTAL THC 11. 1%. These uncertainties represent an expanded uncertainty expressed at approximately the 95% confidence level using a coverage factor k=2 for a normal distribution.

Analytical Batch : KN002553POT
Instrument Used : HPLC E-SHI-008
Running on :

Reviewed On : 06/21/22 14:46:47
Batch Date : 06/20/22 09:04:19

Dilution : 40
Reagent : 081321.R04; 061722.R01; 060922.R02
Consumables : 947B9291.271; 200331059
Pipette : E-GIL-010; E-GIL-013

Full spectrum cannabinoid analysis utilizing High Performance Liquid Chromatography with UV/PDA detection (HPLC-UV/PDA). (Method: SOP.T.30.031.TN for sample prep and Shimadzu High Sensitivity Method SOP.T.40.020 for analysis.). *Based on FL action limits.

This report shall not be reproduced, unless in its entirety, without written approval from Kaycha Labs. This report is an Kaycha Labs certification. The results relate only to the material or product analyzed. Test results are confidential unless explicitly waived otherwise. Void after 1 year from test end date. Cannabinoid content of batch material may vary depending on sampling error. IC=In-control QC parameter, NC=Non-controlled QC parameter, ND=Not Detected, NA=Not Analyzed, ppm=Parts Per Million, ppb=Parts Per Billion. Limit of Detection (LoD) and Limit Of Quantitation (LoQ) are terms used to describe the smallest concentration that can be reliably measured by an analytical procedure. RPD=Reproducibility of two measurements. Action Levels are State determined thresholds for human safety for consumption and/or inhalation. The result >99% are variable based on uncertainty of measurement (UM) for the analyte. The UM error is available from the lab upon request. The "Decision Rule" for the pass/fail does not include the UM. The limits are based on F.S. Rule 64-4.310.

Sue Ferguson

Lab Director

State License # n/a
ISO Accreditation # 17025:2017


Signature

06/22/22

Signed On