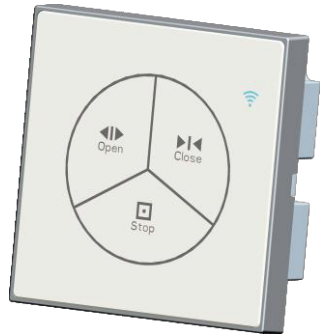


HC-E011 Series Wireless Receiving System Operating Instructions



HC-E011
control box



HC-PM03
remote control

1. Function and Features

- ✧ 86mm*86mm, in accordance with international installation standard;
- ✧ The electric structure is partial conformity with the standard fire protection requirements of the electrician;
- ✧ Industrial grade microcomputer chip is used to improve product quality and reliability greatly;
- ✧ Use shock - proof current relay;
- ✧ Components using precision SMT industry, surface moisture-proof treatment;
- ✧ Power supply has safety protection, power supply output time is 5 minutes;
- ✧ It is used with various emitters and tubular motors.

⚠ Precautions before installation

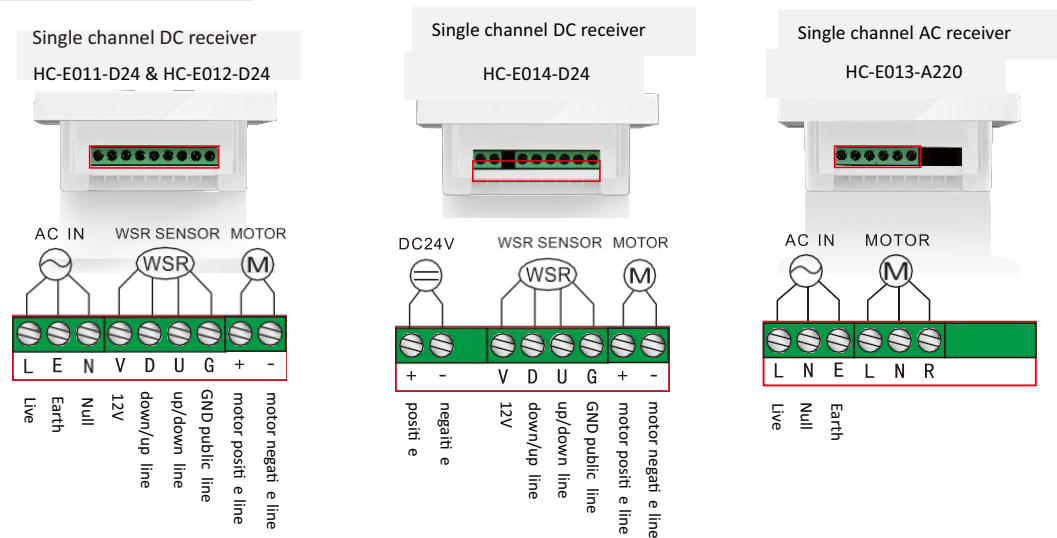
Please comply with the following requirements while meeting the effective power standards

- Transmission range: open area $\leq 80m$, indoor $\geq 30m$;
- Keep the receiver at a distance of more than 1.5m from the ground;
- Keep the receiver at a distance of more than 0.3m from the ceiling;
- Keep the receiver at a distance of more than 1.5m from the motors;
- The main power supply must be cut off before wiring is installed to ensure safe operation;
- Avoid static interference, which can damage some electronic components;
- Please use soft wire and cable;
- Do not let metal objects touch the receiver, otherwise the receiving distance will be affected;
- After installation, ensure that the cable carrier is not affected by longitudinal forces;

2. Product Parameters

Product model	Output voltage	Load power	Receive/transmit frequency	Working temperature	Reception sensitivity	Allowed emitter number	Operated mode
HC-E011-D24 HC-E012-D24	AC100~240V/50Hz	$\leq 36W$ $\leq 72W$	433.92MHz	-35°C~+65°C	-110dBm	Single channel ≤ 8 pcs	Remote/manual/ wired wind rain
HC-E013-A220	AC220V	$\leq 500W$	433.92MHz	-35°C~+65°C	-110dBm	Single channel ≤ 8 pcs	Remote/manual
HC-E014-D24	DC24V	$\leq 120W$	433.92MHz	-35°C~+65°C	-110dBm	Single channel ≤ 8 pcs	Remote/manual/ wired wind rain

3. Product wiring

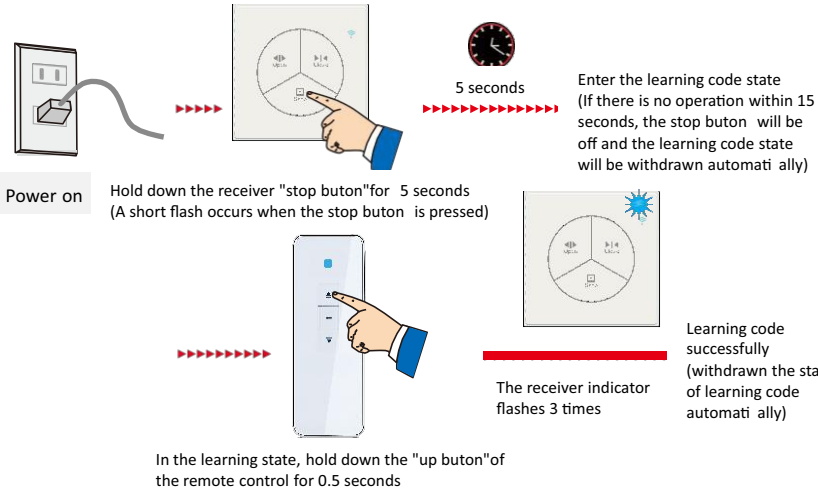


4. Operating Instruction

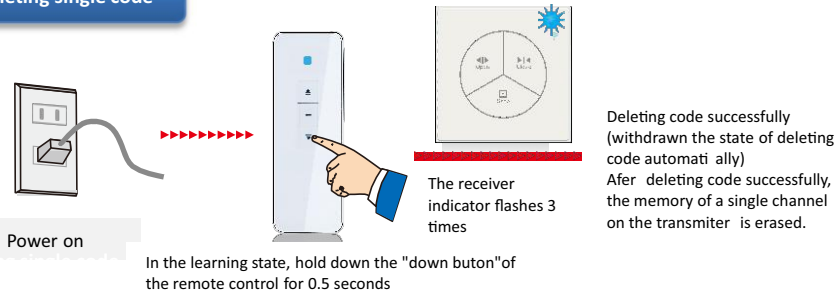
- The maximum running time of the motor is 5 minutes, and the up/down switching time is 500m/s;
- When using the multifrequency remote control, please select the channel to be operated first and then operate it.

Learning code

- The single-channel receiver is debugged in the same way as the dual-channel receiver or the haphazard receiver;
- For the operation of two-way remote control, please select the channel you need to debug first.

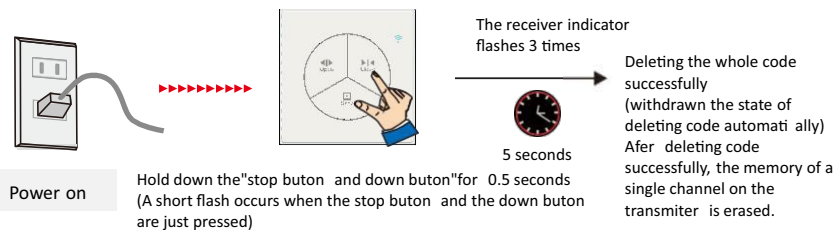


Deleting single code



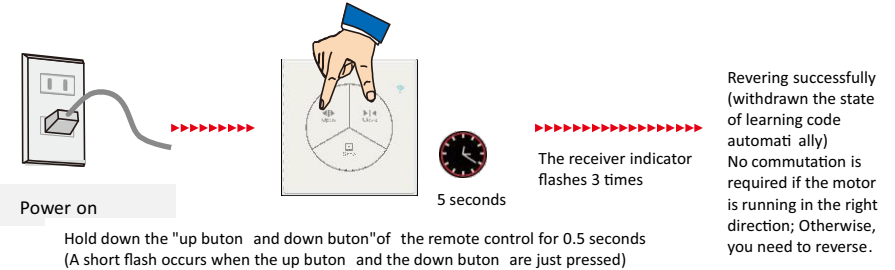
Deleting whole code

Note: Double channel and single channel receiver delete the whole code method is the same, notice this delete the whole code only delete the selected operation channel

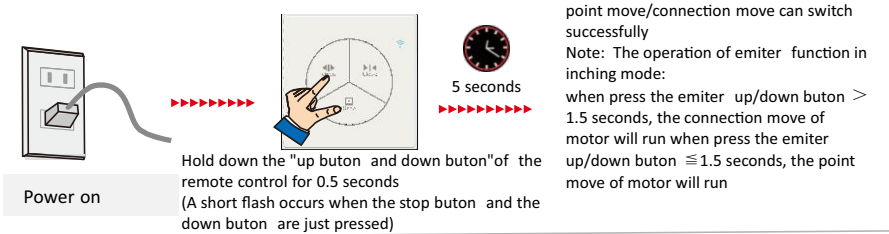


Reversing

- The single-channel receiver is debugged in the same way as the dual-channel receiver or the haphazard receiver;
- For the operation of two-way remote control, please select the channel you need to debug first.



The switch of point move and connection move



5. Fault Handling

Number	The fault phenomenon	Solution ways
1	The indicator lights up when operating the transmitter, but the receiver does not act accordingly	1. Check the receiver wiring is correct 2. Check the program Settings are correct
2	The indicator light on the transmitter is not on or dark	1. Check the battery installation is correct 2. Replace the battery
3	The transmitter and receiver work normally, but the motor does not work	1. Check whether the motor wiring is correct 2. Check the motor for damage