

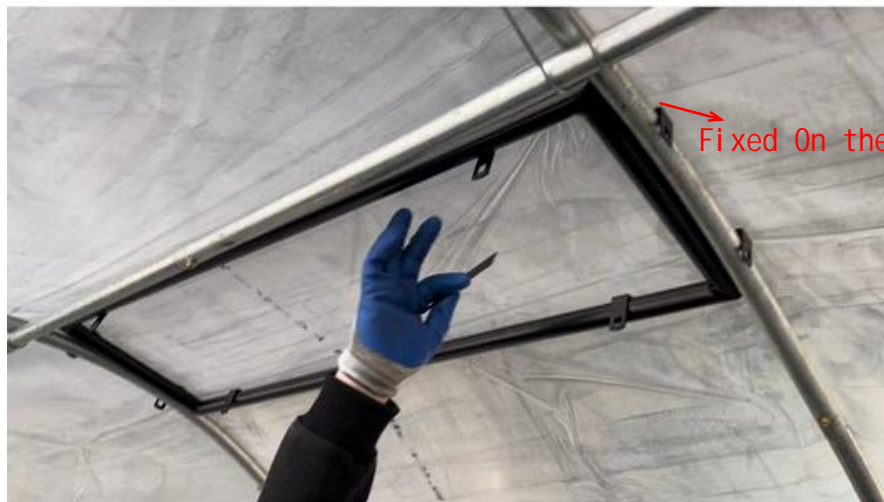
Installation of Vent Frame



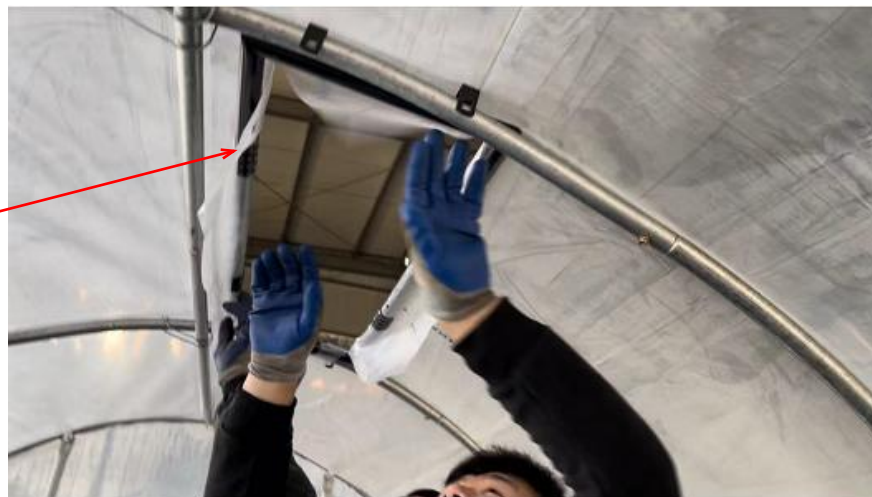
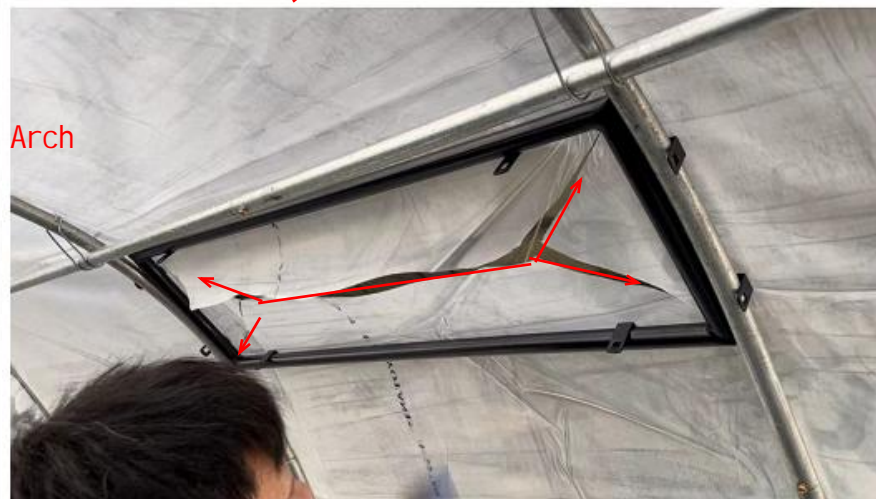
Fix on the Arch Pipe

Fixed on the Vent Support

1. Fixed The Vent Frame on the Arch

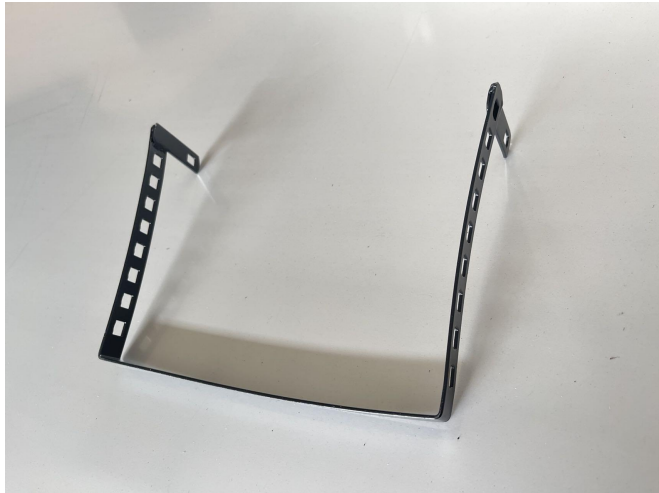


2. Cut The Film From Middle and Cut the below shape

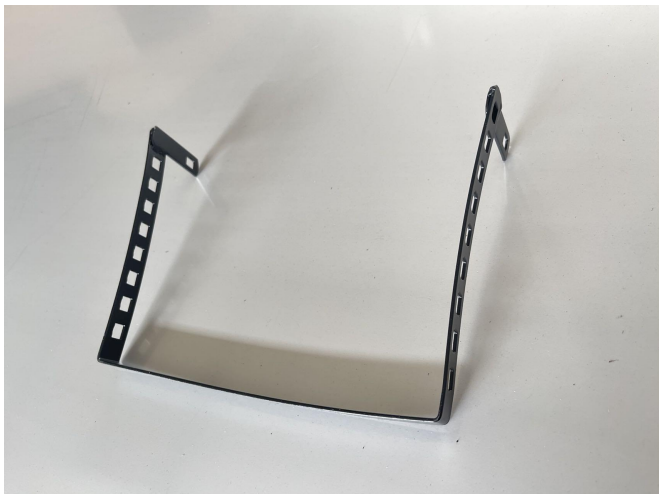


3. Clamp To attach film to the Vent Frame

Installation of Vent Support and Cap



Vent Cap



Two Vent Support



Holes to fix cap to Support

1. Hole to hole make screws in to connect the Vent support and Vent Cap



2. Put the connected Vent to the top of greenhouse

3. One Man open the two vent supports and life up a little



4. Other man make screws in the holes between the vent frame and Vent support
5. Cut extra Film to make the roof vent clear and clean





Final View