

Instruction Manual

Notice:

1. The awning is already assembled, just install it in the position where you need it to be.
2. Do not remove the safety belt and untie the rope until it is fixed.
3. When unfastening the safety belt and rope, the head must be lower than the retractable arm.

Install Steps:



1. Hold up the awning and mark where the brackets will be going on the wall, make sure they are in a straight line. This bracket can be removed and adjusted to the position you would like to install.



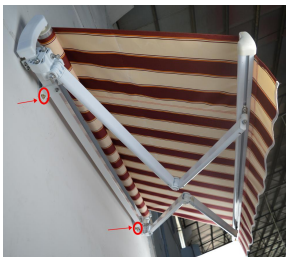
2. Drill holes for the mounting bracket screws at the place you marked. Please use 12mm drill bit.



3. Drive the expansion screw into the drilled hole.



4. Tighten the screw with a wrench to expand the screw, and then remove the nut of the expansion screw.



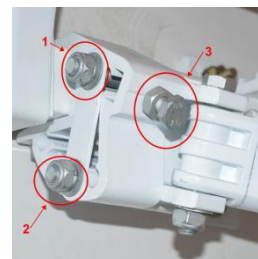
5. Lift the awning to the expansion screw, then tighten the nut with a wrench.



6. Check the screws are tightened before removing the safety belt.



7. The installation is complete. Extend your awning using the handle.



8. Adjust the angle. Loosen the No. 1 and No. 2 screws, and also the No. 3 screws, after that you can adjust the arm up or down. The screw out is lowered, and the screw in is raised. Fix the screw after finish.